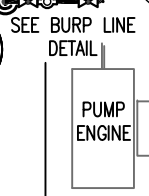
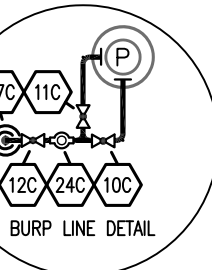
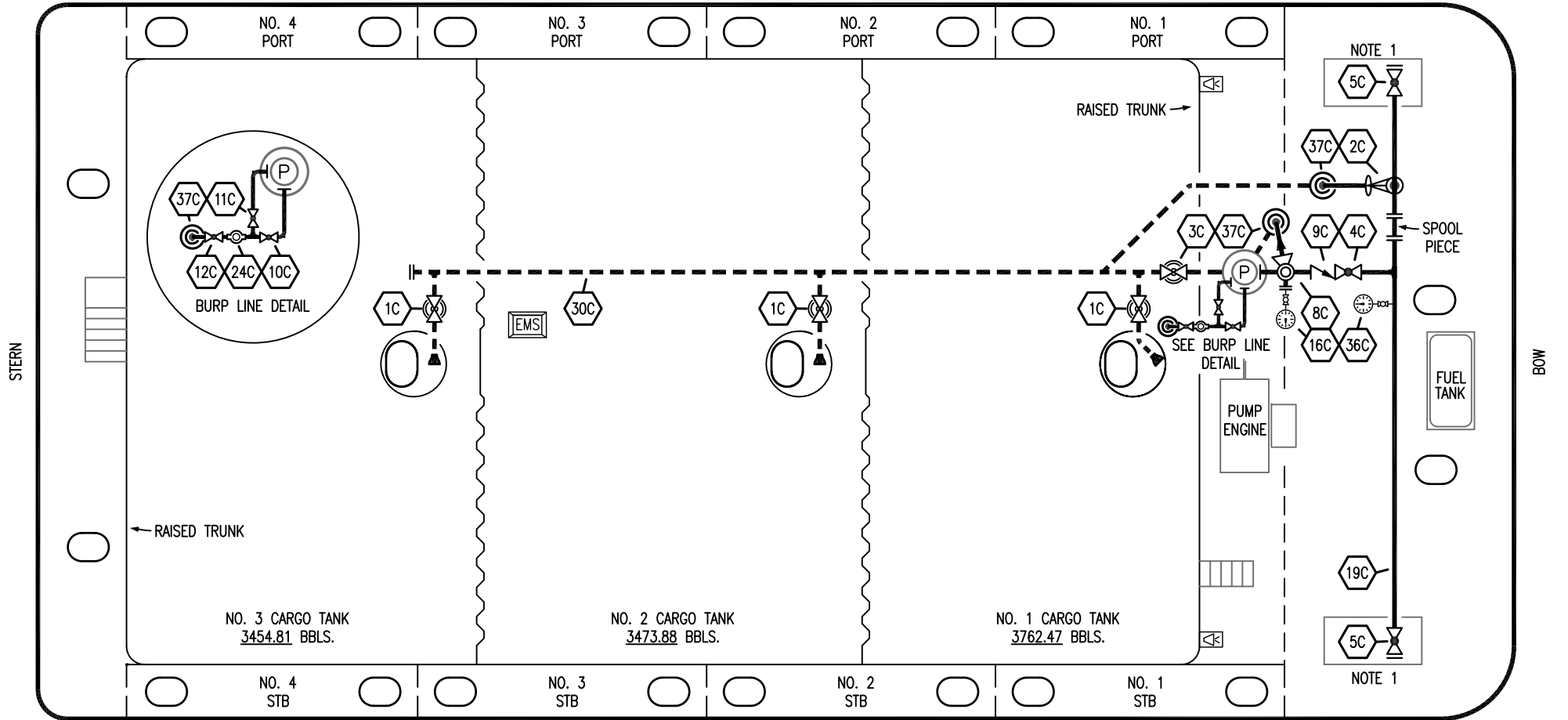


PORT



NO. 3 CARGO TANK
3454.81 BBLS.

NO. 2 CARGO TANK
3473.88 BBLS.

NO. 1 CARGO TANK
3762.47 BBLS.

STARBOARD

NOTE 1: CONTAINMENT P/S

NO	DESCRIPTION	NO	DESCRIPTION
1C	CARGO TANK VALVE	12C	BURP VALVE RETURN TO CARGO TANK
2C	LOAD VALVE	16C	DISCHARGE PRESSURE GAUGE
3C	MASTER SUCTION VALVE	19C	CARGO HEADER
4C	DISCHARGE VALVE	24C	PIPE SIGHT GLASS
5C	HEADER VALVE	30C	CARGO PIPELINE
8C	RELIEF VALVE	36C	PRESSURE GAUGE
9C	CHECK VALVE	37C	CARGO DROP
10C	BURP VALVE	—	— ABOVE DECK PIPING
11C	BLEED OFF VALVE	---	--- BELOW DECK PIPING

TRINITY MARINE PRODUCTS – BARREL CAPACITY=10732

KIRBY INLAND MARINE 

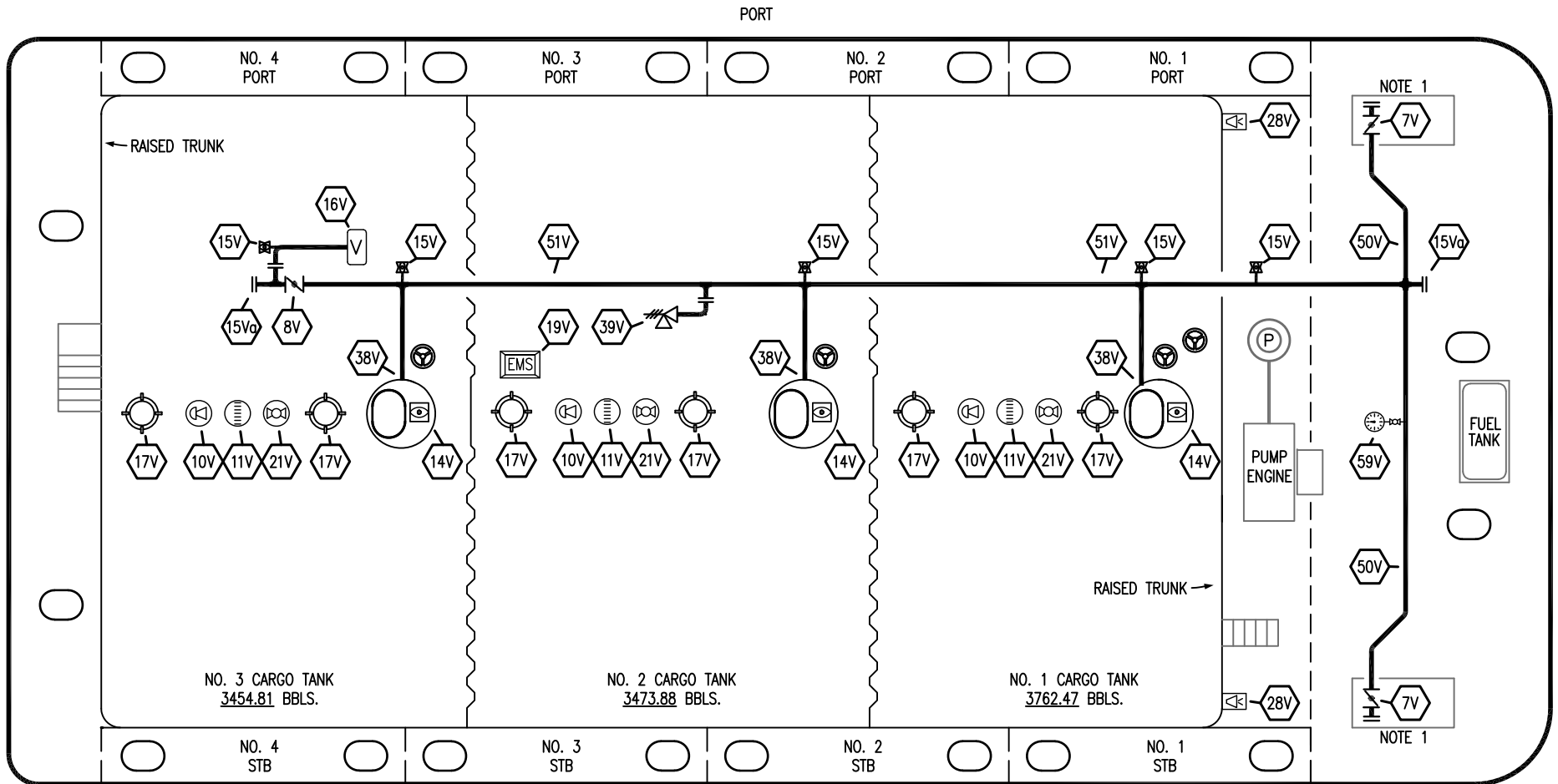
CARGO
PIPING FLOW DIAGRAM

REV.	DATE	BY	CHK	APP	REVISION DESCRIPTION
2	11/11/22	MRV	DDA	DAR	REVISED PER CLIENT COMMENTS
1	09/19/17	WFB	DDA		REMOVED 6C SALVAGE VALVE
0	06/11/12	DCB	DDA		FOR APPROVAL

SCALE: NONE
PAGE: 1 OF 3

KIRBY 10242

REV. **2**



NOTE 1: CONTAINMENT P/S

TRINITY MARINE PRODUCTS – BARREL CAPACITY=10732

NO	DESCRIPTION	NO	DESCRIPTION
7V	HEADER VALVE	19V	EMERGENCY ENGINE SHUT DOWN
8V	VENT STACK VALVE	21V	HERMETIC GAUGE
10V	HIGH LEVEL/OVERFILL ALARM	28V	DOCK CONNECTION ALARM
11V	GAUGE STICK	39V	PRESSURE/VACUUM VALVE
14V	SIGHT GLASS W/GAUGE TREE	38V	VAPOR PENETRATION ☉
15V	INSPECTION PORT	50V	VAPOR HEADER
15Va	INSPECTION PORT	51V	VAPOR PIPELINE
16V	VAPOR VENT STACK	59V	PRESS/VAC GAUGE
17V	BUTTERWORTH	—	ABOVE DECK PIPING

REV.	DATE	BY	CHK	APP	REVISION DESCRIPTION
1	11/11/22	MRV	DDA	DAR	REVISED PER CLIENT COMMENTS
0	06/11/12	DCB	DDA		FOR APPROVAL

KIRBY INLAND MARINE

VAPOR PIPING FLOW DIAGRAM

SCALE: NONE	KIRBY 10242
PAGE: 2 OF 3	REV. 1

