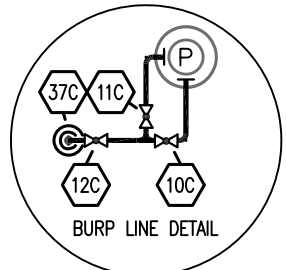
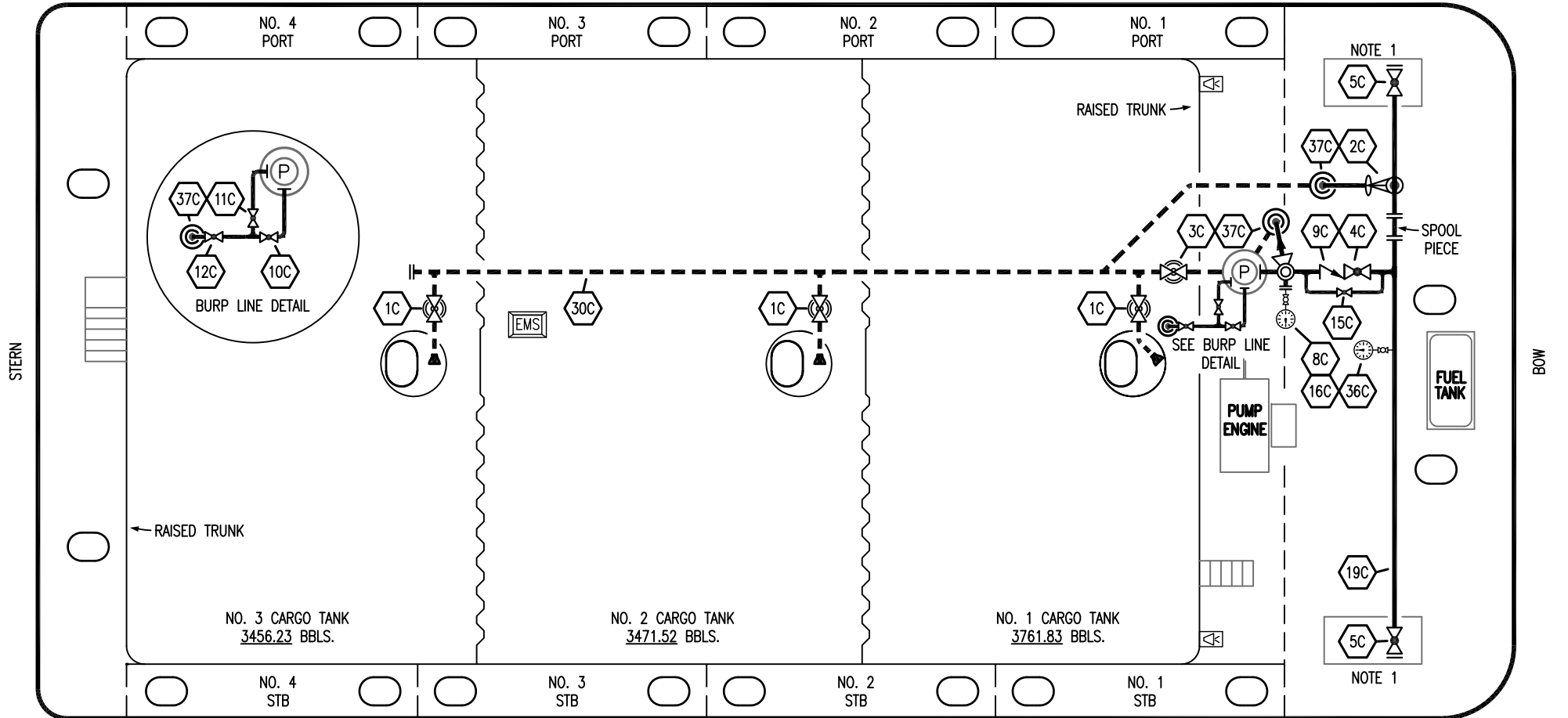


PORT



NO. 3 CARGO TANK
3456.23 BBLs.

NO. 2 CARGO TANK
3471.52 BBLs.

NO. 1 CARGO TANK
3761.83 BBLs.

NOTE 1

NOTE 1

STERN

BOW

STARBOARD

NOTE 1: CONTAINMENT P/S

- | | | | |
|-----------|--------------------------|-----------|------------------------------------|
| NO | DESCRIPTION | NO | DESCRIPTION |
| 1C | 8" CARGO TANK VALVE | 12C | 1" BURP VALVE RETURN TO CARGO TANK |
| 2C | 8" LOAD VALVE | 15C | 2" BYPASS VALVE AROUND CHECK |
| 3C | 10" MASTER SUCTION VALVE | 16C | DISCHARGE PRESSURE GAUGE |
| 4C | 8" DISCHARGE VALVE | 19C | 8" CARGO HEADER |
| 5C | 8" HEADER VALVE | 30C | 10" CARGO PIPELINE |
| 8C | 6" RELIEF VALVE | 36C | PRESSURE GAUGE |
| 9C | 8" CHECK VALVE | 37C | CARGO DROP |
| 10C | 1" BURP VALVE | — | — ABOVE DECK PIPING |
| 11C | 1" BLEED OFF VALVE | - - - | - - - BELOW DECK PIPING |

TRINITY MARINE PRODUCTS – BARREL CAPACITY=10732

KIRBY INLAND MARINE

**CARGO
PIPING FLOW DIAGRAM**

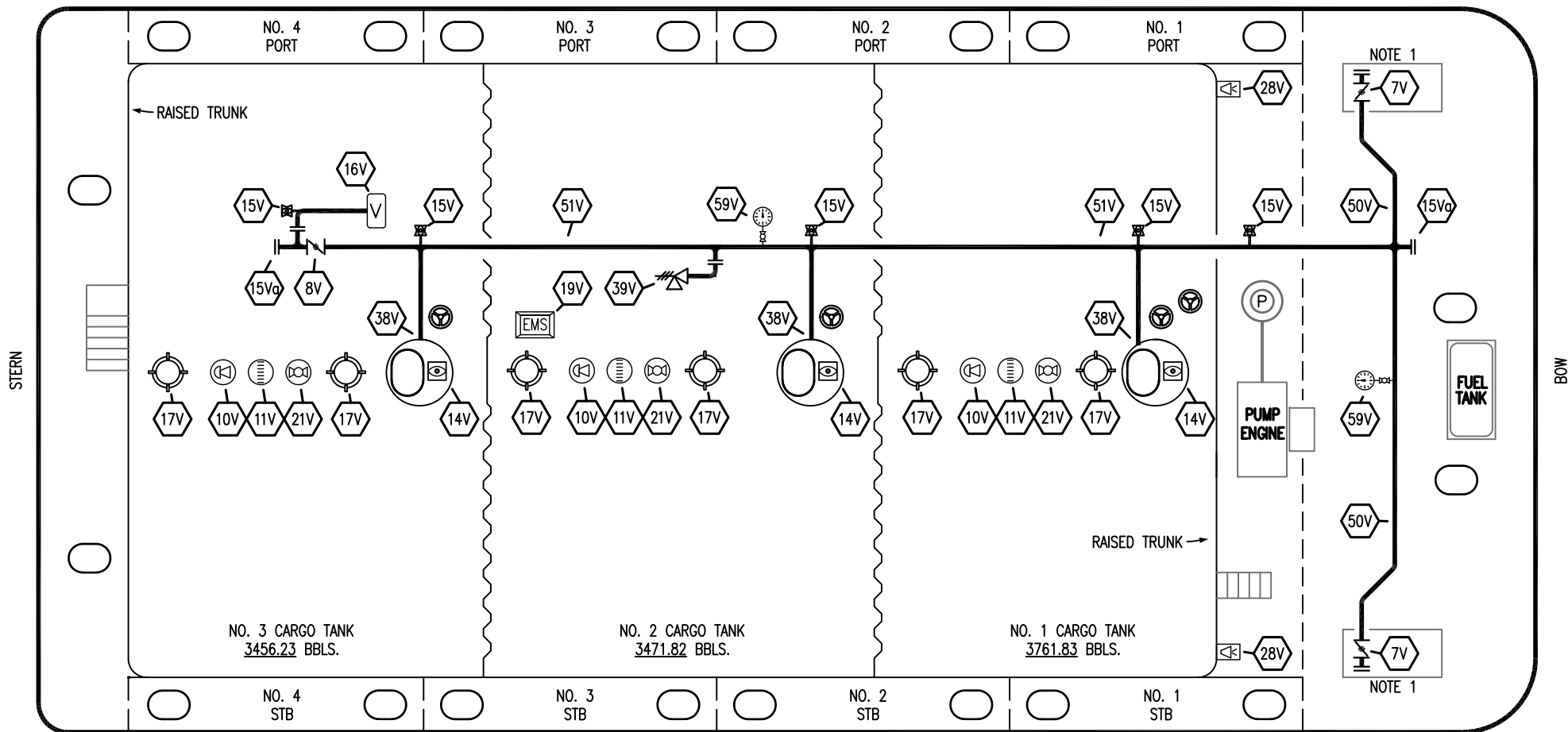
REV.	DATE	BY	CHK	APP	REVISION DESCRIPTION
2	10/27/22	MRV	DDA	FIX	REVISED PER CLIENT COMMENTS
1	09/25/17	WFB	DDA		REVISED PER CLIENT COMMENTS
0	06/11/12	DCB	DDA		FOR APPROVAL

SCALE: NONE
PAGE: 1 OF 3

KIRBY 10240

REV. **2**

PORT



NOTE 1: CONTAINMENT P/S

NO	DESCRIPTION	NO	DESCRIPTION
7V	8" HEADER VALVE	19V	EMERGENCY ENGINE SHUT DOWN
8V	8" VENT STACK VALVE	21V	HERMETIC GAUGE
10V	HIGH LEVEL/OVERFILL ALARM	28V	DOCK CONNECTION ALARM
11V	GAUGE STICK	39V	6" PRESSURE/VACUUM VALVE
14V	SIGHT GLASS W/GAUGE TREE	38V	8" VAPOR PENETRATION (⊙)
15V	2" INSPECTION PORT	50V	8" VAPOR HEADER
15Va	8" INSPECTION PORT	51V	8" VAPOR PIPELINE
16V	8" VAPOR VENT STACK	59V	PRESS/VAC GAUGE
17V	20" BUTTERWORTH	—	ABOVE DECK PIPING

TRINITY MARINE PRODUCTS – BARREL CAPACITY=10732

KIRBY INLAND MARINE 

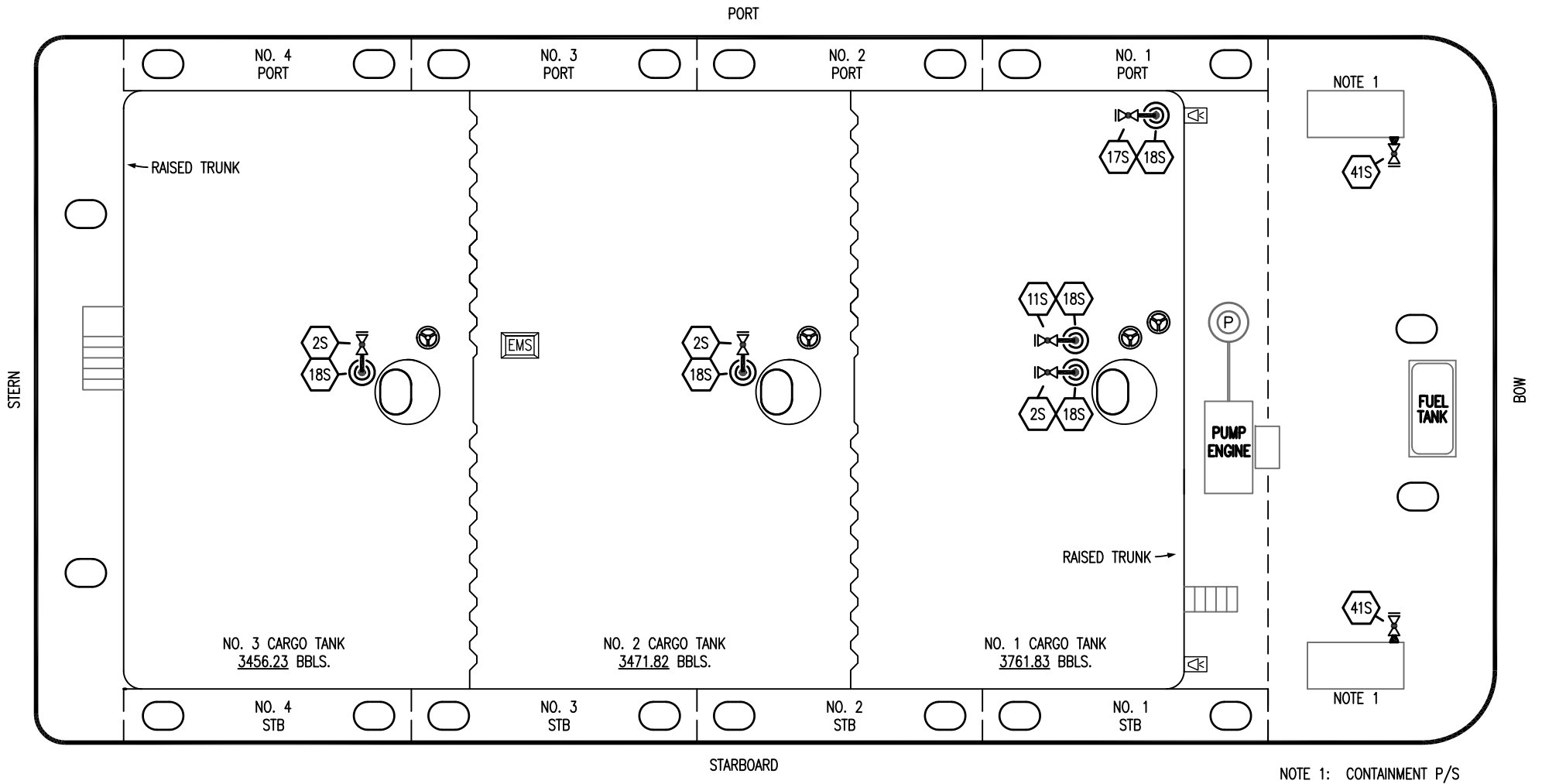
**VAPOR
PIPING FLOW DIAGRAM**

REV.	DATE	BY	CHK	APP	REVISION DESCRIPTION
1	10/27/22	MRV	DDA	FIX	REVISED PER CLIENT COMMENTS
0	06/11/12	DCB	DDA		FOR APPROVAL


SCALE: NONE
PAGE: 2 OF 3

KIRBY 10240

REV. **1**




NOTE 1: CONTAINMENT P/S

- | NO | DESCRIPTION |
|-----|--|
| 2S | CARGO SUMP SUCTION VALVE |
| 11S | LOWER CARGO PIPELINE SUCTION VALVE |
| 17S | FORWARD TANK STRIPPING |
| 18S | STRIPPING SUMP  |
| 41S | CONTAINMENT DRAIN VALVE W/ CAP |

TRINITY MARINE PRODUCTS – BARREL CAPACITY=10732

REV.	DATE	BY	CHK	APP	REVISION DESCRIPTION
1	10/27/22	MRV	DDA	FIX	REVISED PER CLEINT COMMENTS
0	06/11/12	DCB	DDA		FOR APPROVAL

KIRBY INLAND MARINE 

STRIPPING
PIPING FLOW DIAGRAM

SCALE: NONE	KIRBY 10240	REV. 1
PAGE: 3 OF 3		