

NOTE 1: CONTAMNMENT P/S

TRINITY MARINE PRODUCTS - BARREL CAPACITY=10732



KIRBY INLAND MARINE

CARGO

PIPING FLOW DIAGRAM

REV. **1**

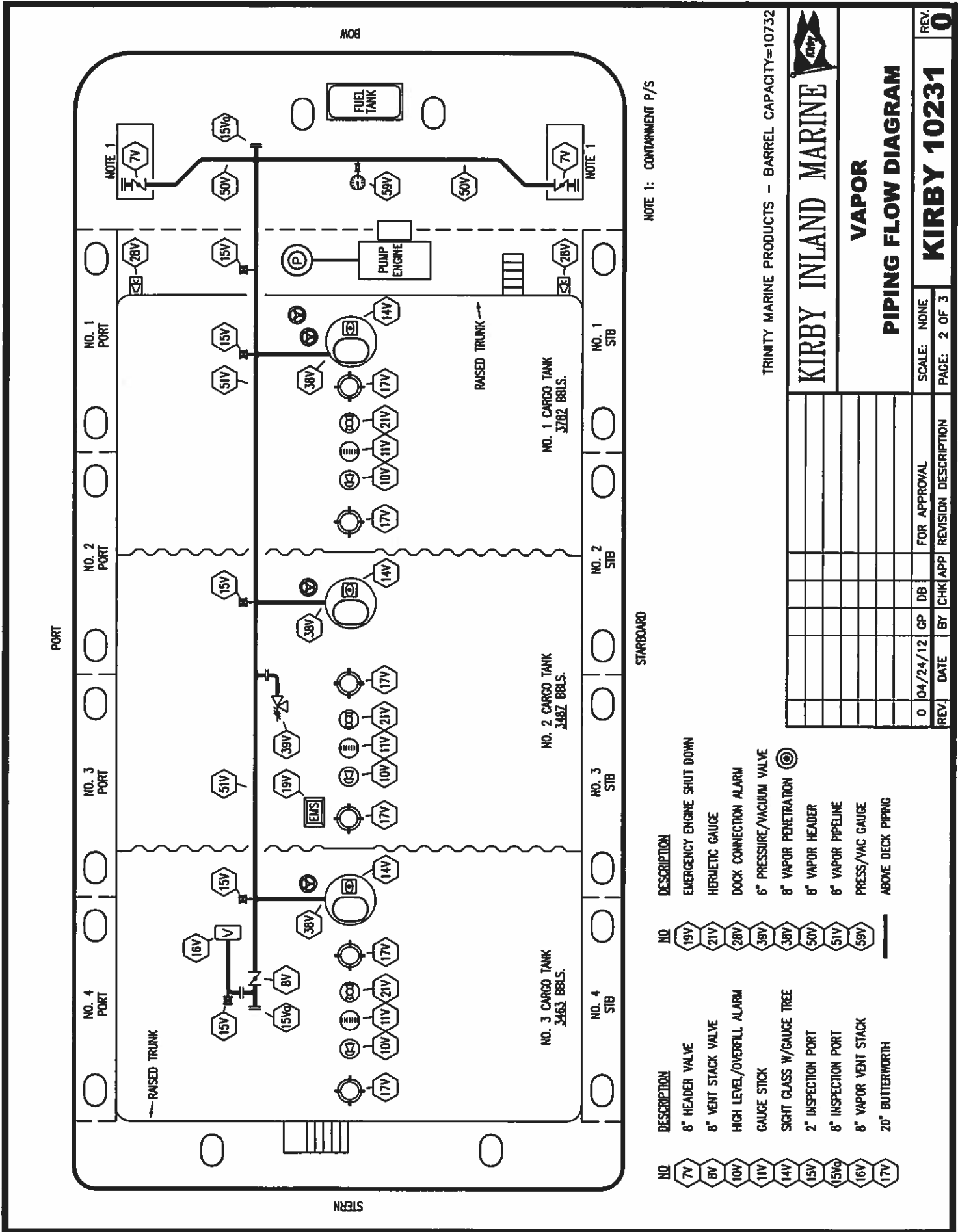
KIRBY 10231

SCALE: NONE
PAGE: 1 OF 3

STARBOARD

NO	DESCRIPTION	NO	DESCRIPTION
1C	8" CARGO TANK VALVE	12C	1" BURP VALVE RETURN TO CARGO TANK
2C	8" LOAD VALVE	16C	DISCHARGE PRESSURE GAUGE
3C	10" MASTER SUCTION VALVE	19C	8" CARGO HEADER
4C	8" DISCHARGE VALVE	24C	1" PIPE SIGHT GLASS
5C	8" HEADER VALVE	30C	10" CARGO PIPELINE
6C	6" RELIEF VALVE	36C	PRESSURE GAUGE
8C	8" CHECK VALVE	37C	CARGO DROP
10C	1" BURP VALVE		— ABOVE DECK PIPING
11C	1" BLEED OFF VALVE		- - - BELOW DECK PIPING

REV	DATE	BY	CHK APP	REVISION DESCRIPTION
1	05/22/17	WFB	DDA	REVISED PER CLIENT COMMENTS
0	04/24/12	CP	DB	FOR APPROVAL



NOTE 1: CONTAMINANT P/S

STARBOARD

TRINITY MARINE PRODUCTS - BARREL CAPACITY=10732

KIRBY INLAND MARINE

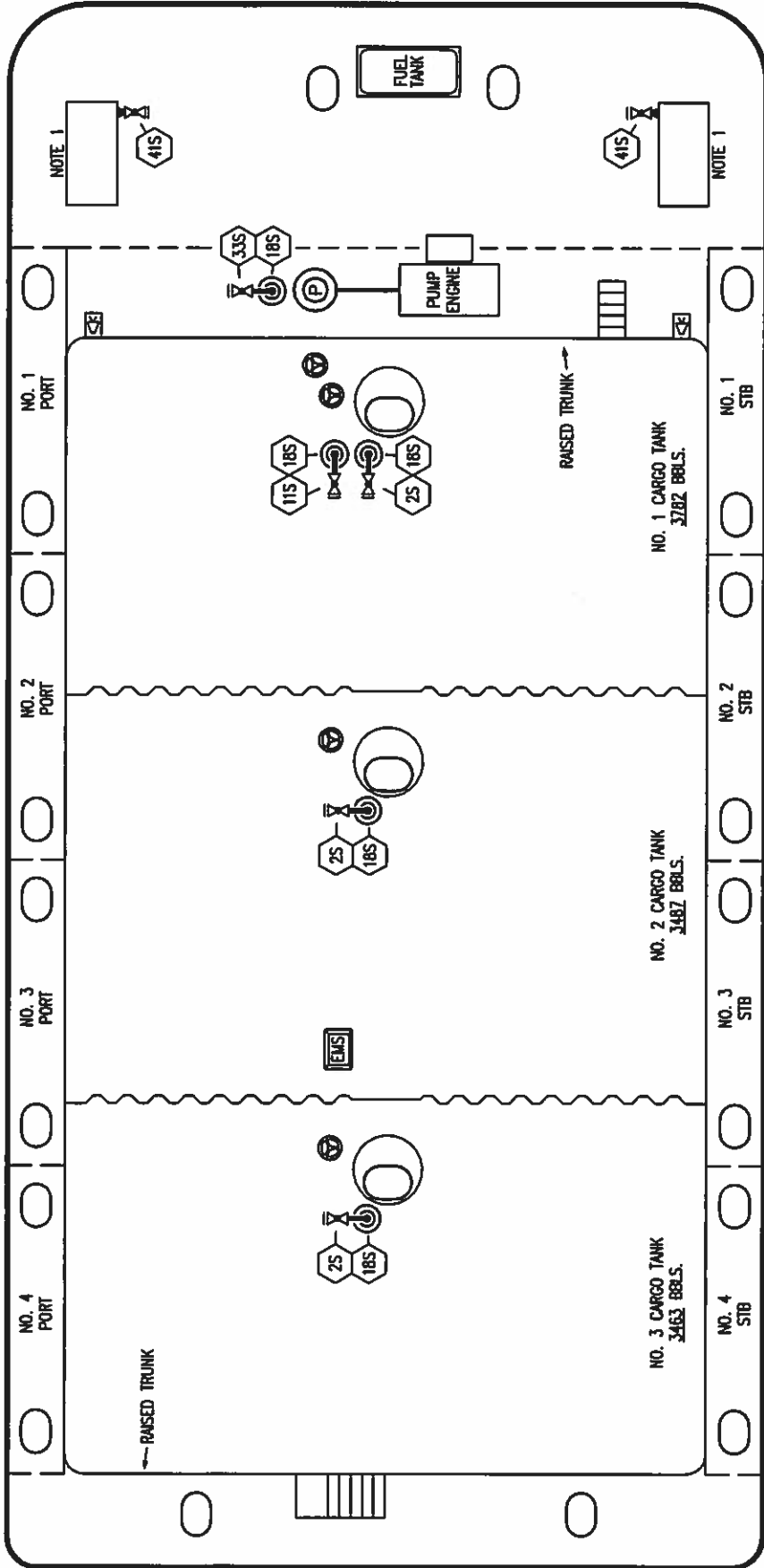
VAPOR

PIPING FLOW DIAGRAM

REV.	0	SCALE: NONE
FOR APPROVAL		PAGE: 2 OF 3
0 04/24/12	GP DB	REVISION DESCRIPTION
REV.	DATE	BY CHK/APP

- | | | | |
|------------|------------|------------|------------|
| NO. 4 PORT | NO. 3 PORT | NO. 2 PORT | NO. 1 PORT |
| NO. 4 STB | NO. 3 STB | NO. 2 STB | NO. 1 STB |
-
- | | | |
|----------|---------|---------------------------|
| NO. 7V | NO. 19V | DESCRIPTION |
| NO. 8V | NO. 21V | 8" HEADER VALVE |
| NO. 10V | NO. 28V | 8" VENT STACK VALVE |
| NO. 11V | NO. 39V | HIGH LEVEL/OVERFILL ALARM |
| NO. 14V | NO. 38V | GAUGE STICK |
| NO. 15V | NO. 50V | SIGHT GLASS W/GAUGE TREE |
| NO. 15VQ | NO. 51V | 2" INSPECTION PORT |
| NO. 16V | NO. 59V | 8" INSPECTION PORT |
| NO. 17V | | 8" VAPOR VENT STACK |
| | | 20" BUTTERWORTH |
| | | ABOVE DECK PIPING |
-
- | | |
|----------------------------|-----|
| DESCRIPTION | NO. |
| EMERGENCY ENGINE SHUT DOWN | 19V |
| HERMETIC GAUGE | 21V |
| DOCK CONNECTION ALARM | 28V |
| 6" PRESSURE/VACUUM VALVE | 39V |
| 8" VAPOR PENETRATION | 38V |
| 8" VAPOR HEADER | 50V |
| 8" VAPOR PIPELINE | 51V |
| PRESS/VAC GAUGE | 59V |

PORT



NOTE 1: CONTAINMENT P/S

STARBOARD

- NO** **DESCRIPTION**
- 25 CARGO SUMP SUCTION VALVE
 - 11S LOWER CARGO PIPELINE SUCTION VALVE
 - 18S STRIPPING DROP
 - 33S PUMP WELL SUCTION VALVE
 - 41S CONTAINMENT DRAIN VALVE W/ CAP

TRINITY MARINE PRODUCTS - BARREL CAPACITY-10732



KIRBY INLAND MARINE

**STRIPPING
PIPING FLOW DIAGRAM**

REV.	DATE	BY	CHK	APP	REVISION DESCRIPTION
0	04/24/12	GP	DB		FOR APPROVAL

SCALE: NONE
PAGE: 3 OF 3

REV. **0**

KIRBY 10231