

NO	SIZE	DESCRIPTION
1C	8"	CARGO TANK VALVE
2C	8"	LOAD VALVE
3C	8"	MASTER SUCTION VALVE
4C	8"	DISCHARGE VALVE
5C	8"	HEADER VALVE
6C	8"	RELIEF VALVE
7C	6"	CHECK VALVE
8C	1"	BURP VALVE RETURN TO CARGO TANK

NO	SIZE	DESCRIPTION
13C	10"	CARGO PIPING BLOCK VALVE
15C	2"	BYPASS VALVE (AROUND CHECK VALVE)
16C	18"	PRESSURE GAUGE
17C	20"	CLEAN OUT (C.O.)
22C	1"	BUTTERWORTH
24C	1"	FLOW INDICATOR

NOTE 1: DEEPWELL CARGO PUMP
 BELOW DECK PIPING - - - -
 ABOVE DECK PIPING - - - -

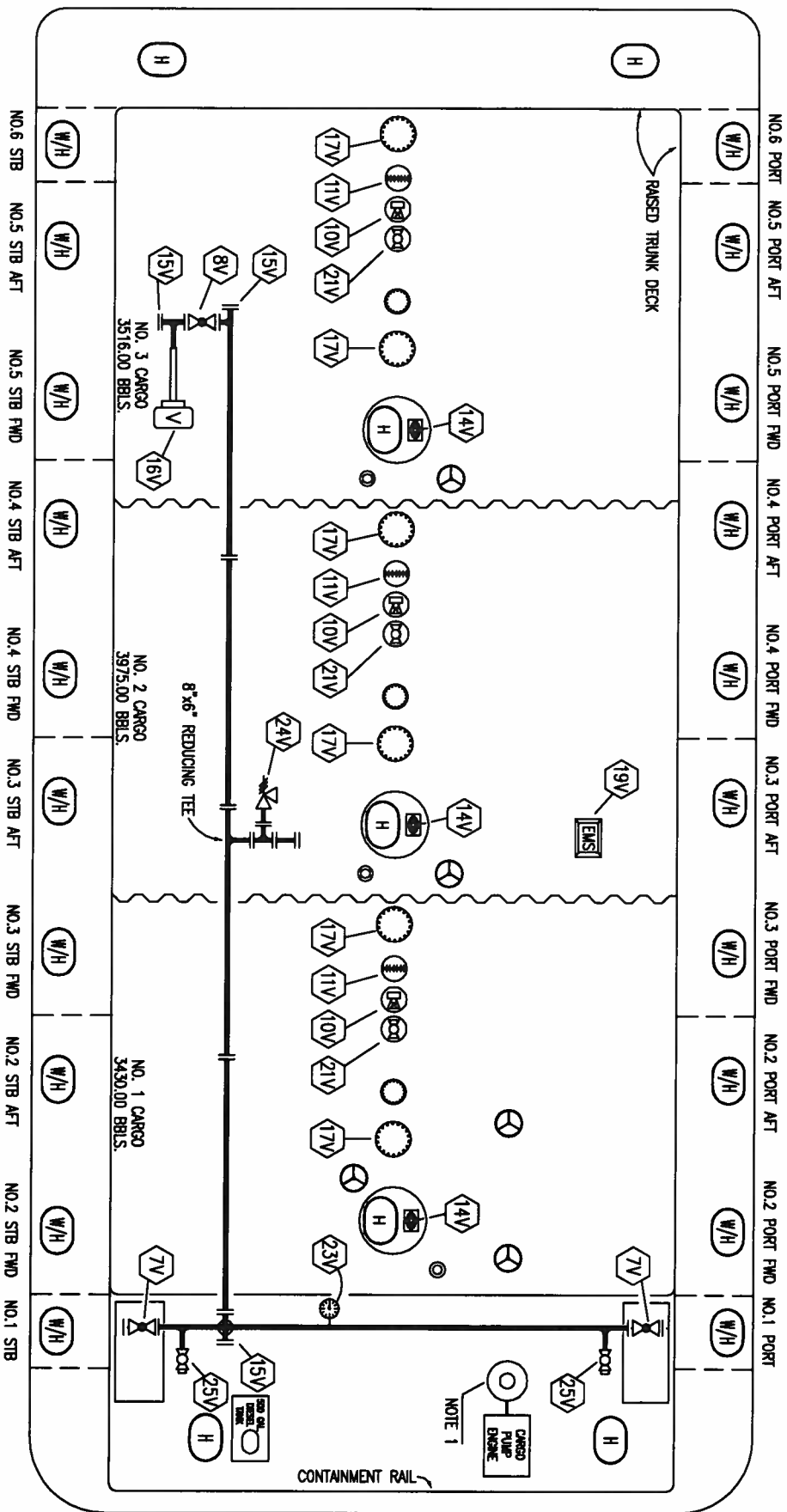
REV.	DATE	DDA	KIM	REVISION DESCRIPTION
1	01/29/09	RB	OF	DELETE 9Cd
0	12/10/08	RB	JF	APPROVED
A	11/07/08	RB	JB	ISSUED FOR APPROVAL

KIRBY INLAND MARINE

CARGO DIAGRAM

SCALE: NONE
 PAGE: 1 OF 3
KIRBY 10208
 REV. 1

STERN



BOW

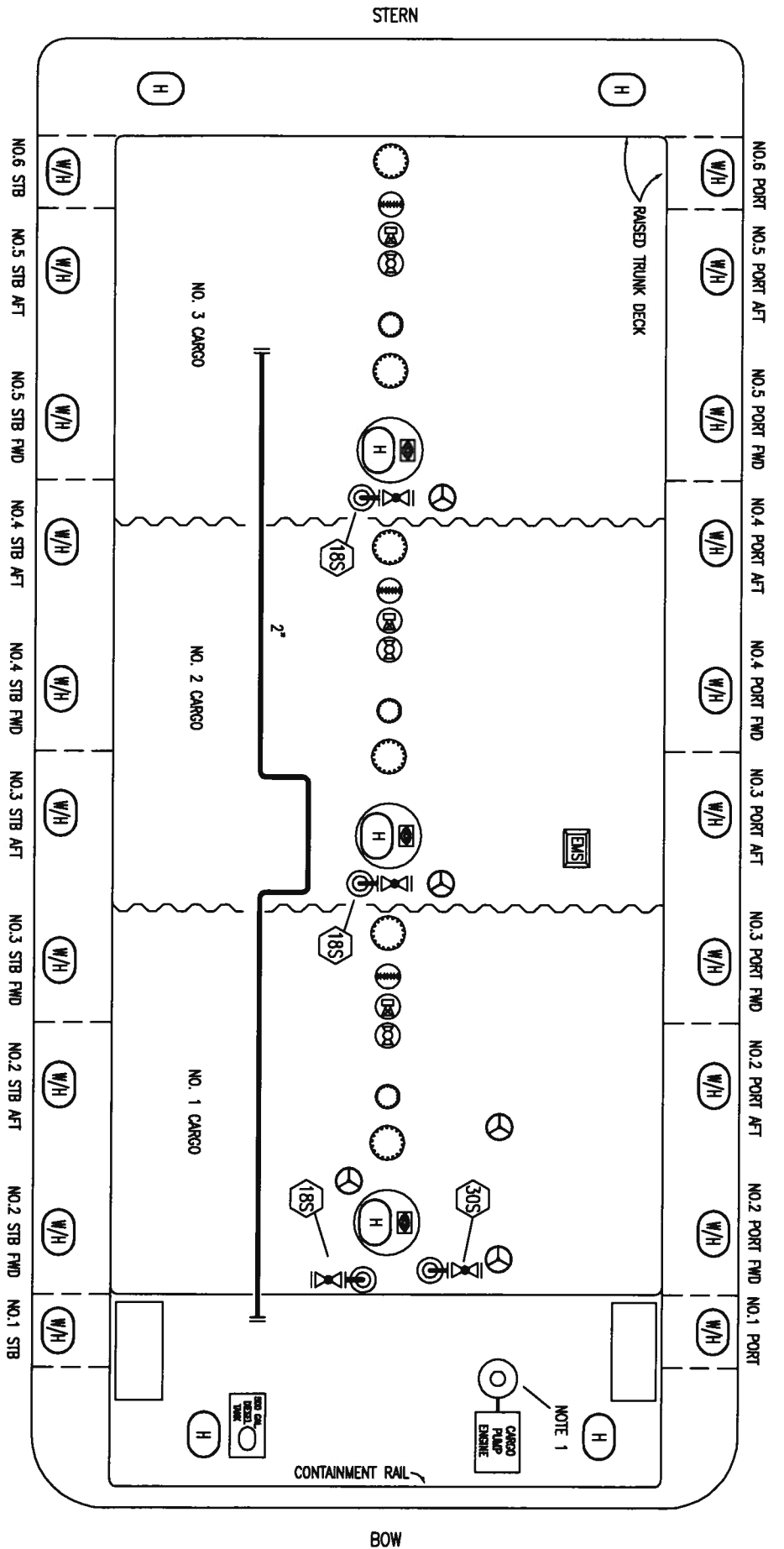
- | NO | SIZE | DESCRIPTION |
|-----|------|---------------------------|
| 7V | 8" | HEADER VALVE |
| 8V | 8" | VENT STACK VALVE |
| 10V | 1" | HIGH LEVEL/OVERFILL ALARM |
| 11V | | GAUGE STICK |
| 14V | | SIGHT GLASS |
| 15V | 8" | INSPECTION PORT |
| 16V | 8" | VAPOR VENT STACK |
| 17V | 20" | BUTTERWORTH |
| 19V | | EMERGENCY SYSTEM SHUTDOWN |
| 21V | | HERMETIC GAUGE |
| 23V | | PRESSURE GAUGE |
| 24V | 6" | PRESSURE RELIEF VALVE |
| 25V | 1" | HEADER LOW POINT DRAIN |

NOTE 1: DEEPWELL CARGO PUMP ABOVE DECK PIPING

REV.	DATE	DDA	KIM	REVISION DESCRIPTION
0	12/11/08	RB	JF	APPROVED
A	11/07/08	RB	JB	ISSUED FOR APPROVAL

KIRBY INLAND MARINE

VAPOR DIAGRAM



REV.	DATE	DDA	KIM	REVISION DESCRIPTION
1	12/12/08	WK	JF	REMOVED TAG 215
0	12/10/08	RB	JF	APPROVED
A	11/07/08	RB	JB	ISSUED FOR APPROVAL

KIRBY INLAND MARINE



STRIPPING DIAGRAM

SCALE: NONE

PAGE: 3 OF 3

KIRBY 10208

REV. 1