

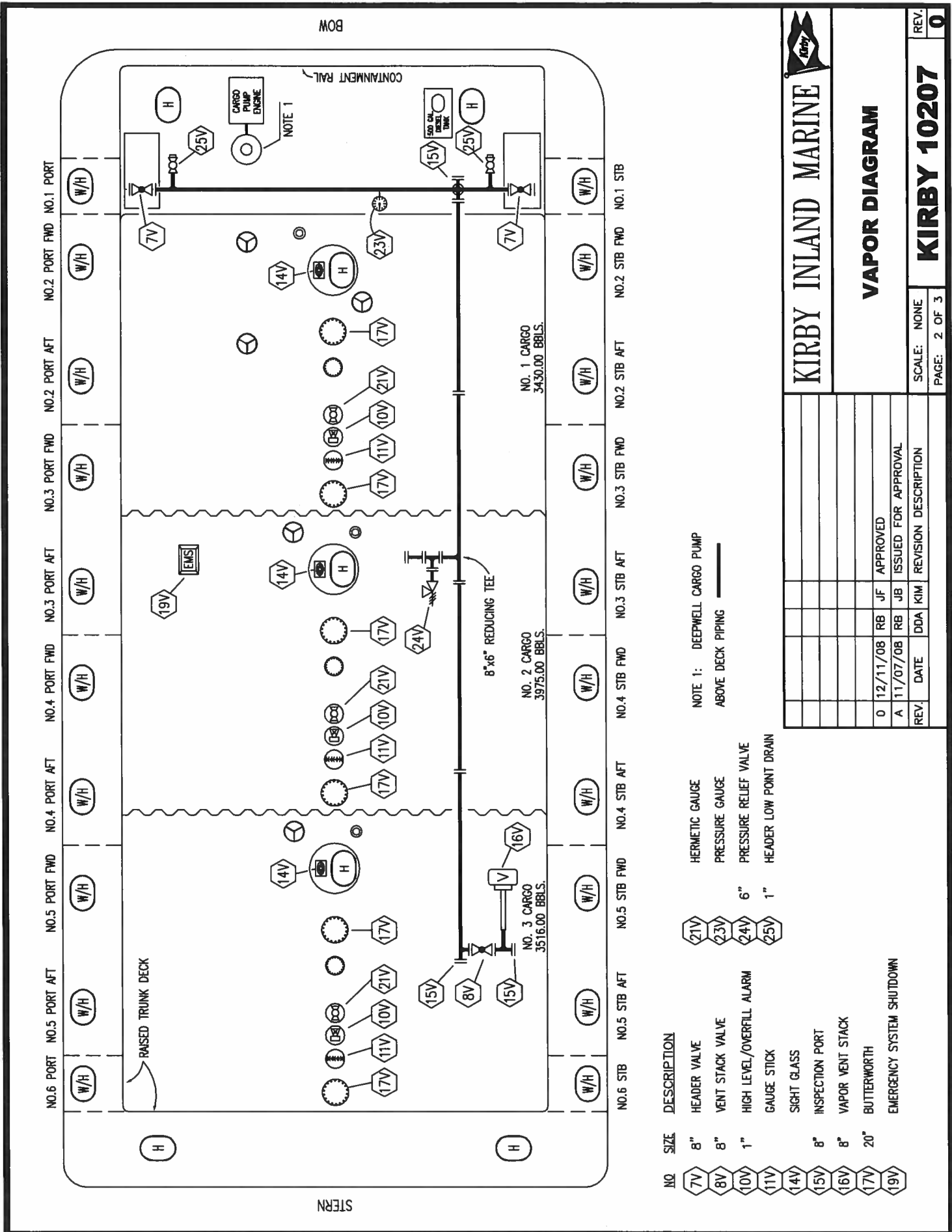
KIRBY INLAND MARINE

CARGO DIAGRAM

SCALE: NONE	REV. 1
PAGE: 1 OF 3	

NO	SIZE	DESCRIPTION	NO	SIZE	DESCRIPTION
1C	8"	CARGO TANK VALVE	13C	10"	CARGO PIPING BLOCK VALVE
2C	8"	LOAD VALVE	15C	2"	BYPASS VALVE (AROUND CHECK VALVE)
3C	8"	MASTER SUCTION VALVE	16C		PRESSURE GAUGE
4C	8"	DISCHARGE VALVE	17C	18"	CLEAN OUT (C.O.)
5C	8"	HEADER VALVE	22C	20"	BUTTERWORTH
8C	8"	RELIEF VALVE	24C	1"	FLOW INDICATOR
9C	6"	CHECK VALVE			
12C	1"	BURP VALVE RETURN TO CARGO TANK			

REV.	DATE	DDA	KIM	REVISION DESCRIPTION
1	01/29/09	RB	OF	DELETE 9Cg
0	12/10/08	RB	JF	APPROVED
A	11/07/08	RB	JB	ISSUED FOR APPROVAL



KIRBY INLAND MARINE

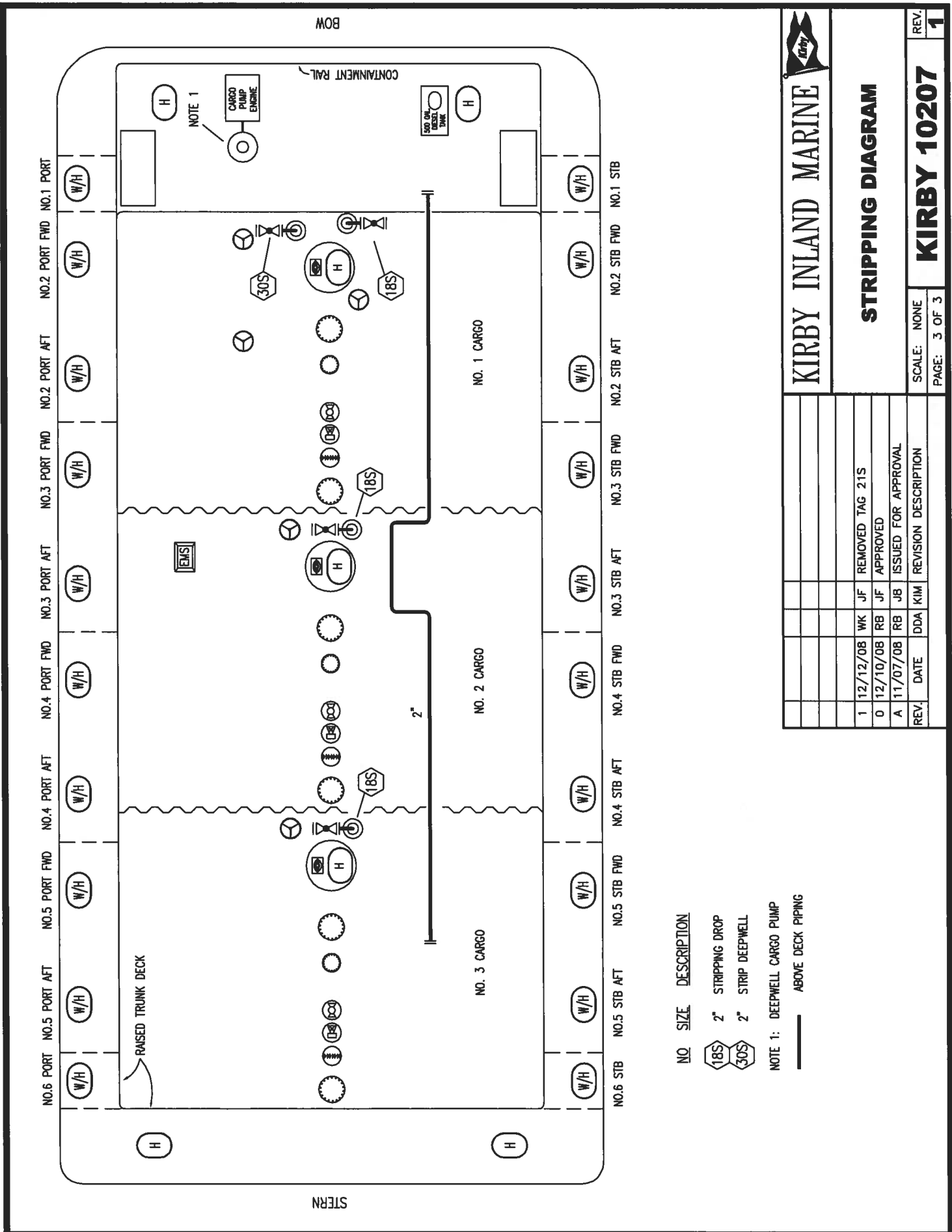
VAPOR DIAGRAM

REV.	0
SCALE:	NONE
PAGE:	2 OF 3

NO.	SIZE	DESCRIPTION
7V	8"	HEADER VALVE
8V	8"	VENT STACK VALVE
10V	1"	HIGH LEVEL/OVERTILL ALARM
11V		GAUGE STICK
14V		SIGHT GLASS
15V	8"	INSPECTION PORT
16V	8"	VAPOR VENT STACK
17V	20"	BUTTERWORTH
19V		EMERGENCY SYSTEM SHUTDOWN
21V		HERMETIC GAUGE
23V		PRESSURE GAUGE
24V	6"	PRESSURE RELIEF VALVE
25V	1"	HEADER LOW POINT DRAIN

NOTE 1: DEEPWELL CARGO PUMP ABOVE DECK PIPING

REV.	DATE	DDA	KIM	REVISION DESCRIPTION
0	12/11/08	RB	JF	APPROVED
A	11/07/08	RB	JB	ISSUED FOR APPROVAL



KIRBY INLAND MARINE

STRIPPING DIAGRAM

REV.	1
SCALE:	NONE
PAGE:	3 OF 3

- NO. SIZE DESCRIPTION**
- 18S 2" STRIPPING DROP
 - 30S 2" STRIP DEEPWELL
- NOTE 1: DEEPWELL CARGO PUMP
 — ABOVE DECK PIPING

REV.	DATE	DDA	KIM	REVISION DESCRIPTION
1	12/12/08	WK	JF	REMOVED TAG 215
0	12/10/08	RB	JF	APPROVED
A	11/07/08	RB	JB	ISSUED FOR APPROVAL