

NO	SIZE	DESCRIPTION	NO	SIZE	DESCRIPTION
1C	8"	CARGO TANK VALVE	13C	10"	CARGO PIPING BLOCK VALVE
2C	8"	LOAD VALVE	15C	2"	BYPASS VALVE (AROUND CHECK VALVE)
3C	8"	MASTER SUCTION VALVE	16C		PRESSURE GAUGE
4C	8"	DISCHARGE VALVE	17C	18"	CLEAN OUT (C.O.)
5C	8"	HEADER VALVE	22C	20"	BUTTERWORTH
8C	8"	RELIEF VALVE	24C	1"	FLOW INDICATOR
9C	6"	CHECK VALVE			
12C	1"	BURP VALVE RETURN TO CARGO TANK			

NOTE 1: DEEPWELL CARGO PUMP
 BELOW DECK PIPING - - -
 ABOVE DECK PIPING - - -

REV.	DATE	DDA	KIM	REVISION DESCRIPTION
1	01/29/09	RB	OF	DELETE 9Cg
0	12/10/08	RB	JF	APPROVED
A	11/07/08	RB	JB	ISSUED FOR APPROVAL

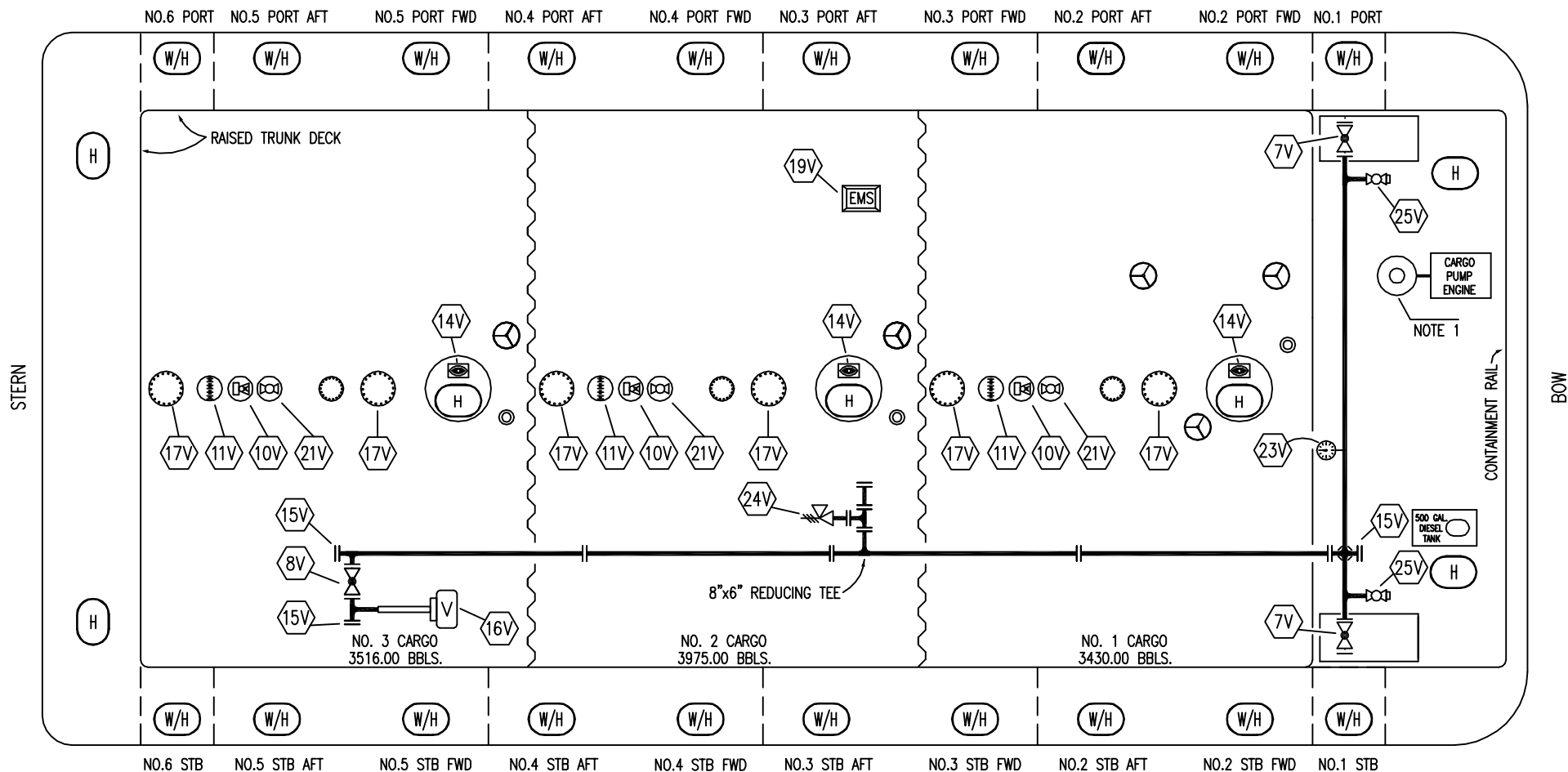
KIRBY INLAND MARINE 

CARGO DIAGRAM

SCALE: NONE
 PAGE: 1 OF 3

KIRBY 10205

REV. 1



NO SIZE DESCRIPTION

- | | | | | |
|-----|-----|---------------------------|-----|---------------------------|
| 7V | 8" | HEADER VALVE | 21V | HERMETIC GAUGE |
| 8V | 8" | VENT STACK VALVE | 23V | PRESSURE GAUGE |
| 10V | 1" | HIGH LEVEL/OVERFILL ALARM | 24V | 6" PRESSURE RELIEF VALVE |
| 11V | | GAUGE STICK | 25V | 1" HEADER LOW POINT DRAIN |
| 14V | | SIGHT GLASS | | |
| 15V | 8" | INSPECTION PORT | | |
| 16V | 8" | VAPOR VENT STACK | | |
| 17V | 20" | BUTTERWORTH | | |
| 19V | | EMERGENCY SYSTEM SHUTDOWN | | |

NOTE 1: DEEPWELL CARGO PUMP
 ABOVE DECK PIPING ———

0	12/11/08	RB	JF	APPROVED
A	11/07/08	RB	JB	ISSUED FOR APPROVAL
REV.	DATE	DDA	KIM	REVISION DESCRIPTION

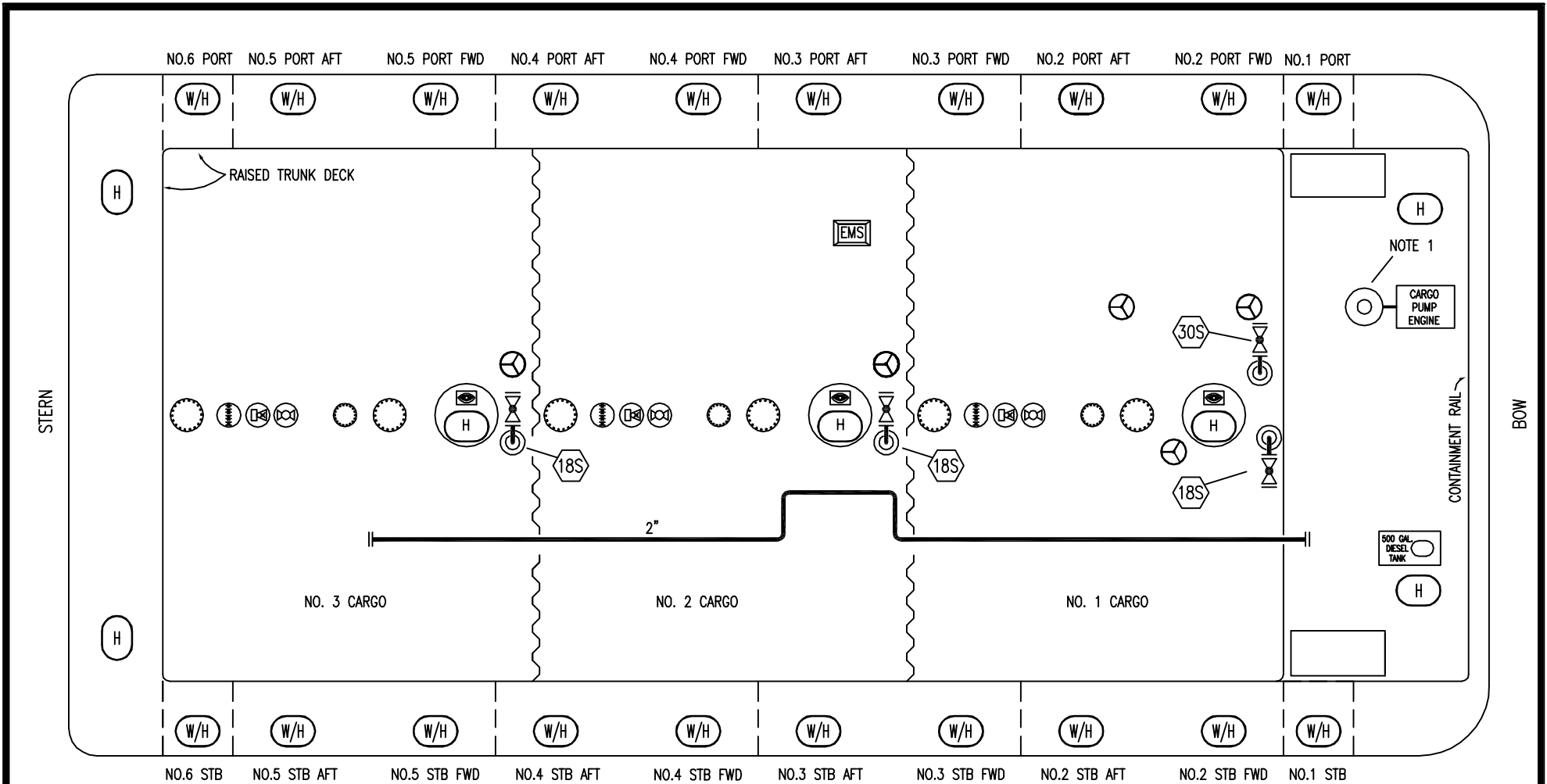
KIRBY INLAND MARINE 

VAPOR DIAGRAM

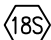

SCALE: NONE
 PAGE: 2 OF 3

KIRBY 10205

REV.
 0



NO SIZE DESCRIPTION

-  2" STRIPPING DROP
-  2" STRIP DEEPWELL

NOTE 1: DEEPWELL CARGO PUMP

 ABOVE DECK PIPING

1	12/12/08	WK	JF	REMOVED TAG 21S
0	12/10/08	RB	JF	APPROVED
A	11/07/08	RB	JB	ISSUED FOR APPROVAL
REV.	DATE	DDA	KIM	REVISION DESCRIPTION

KIRBY INLAND MARINE 

STRIPPING DIAGRAM

SCALE: NONE
PAGE: 3 OF 3

KIRBY 10205

REV. 1