

NO	SIZE	DESCRIPTION
1C	8"	CARGO TANK VALVE
2C	8"	LOAD VALVE
3C	8"	MASTER SUCTION VALVE
4C	8"	DISCHARGE VALVE
5C	8"	HEADER VALVE
8C	8"	RELIEF VALVE
9C	6"	CHECK VALVE
12C	1"	BURP VALVE RETURN TO CARGO TANK
13C	10"	CARGO PIPING BLOCK VALVE
15C	2"	BYPASS VALVE (AROUND CHECK VALVE)
16C		PRESSURE GAUGE
17C	18"	CLEAN OUT (C.O.)
22C	20"	BUTTERWORTH
24C	1"	FLOW INDICATOR

NOTE 1: DEEPWELL CARGO PUMP
 BELOW DECK PIPING - - - -
 ABOVE DECK PIPING - - - -

REV.	DATE	BY	DESCRIPTION
1	01/29/09	RB	OF DELETE 9Cg
0	12/10/08	RB	JF APPROVED
A	11/07/08	RB	JB ISSUED FOR APPROVAL

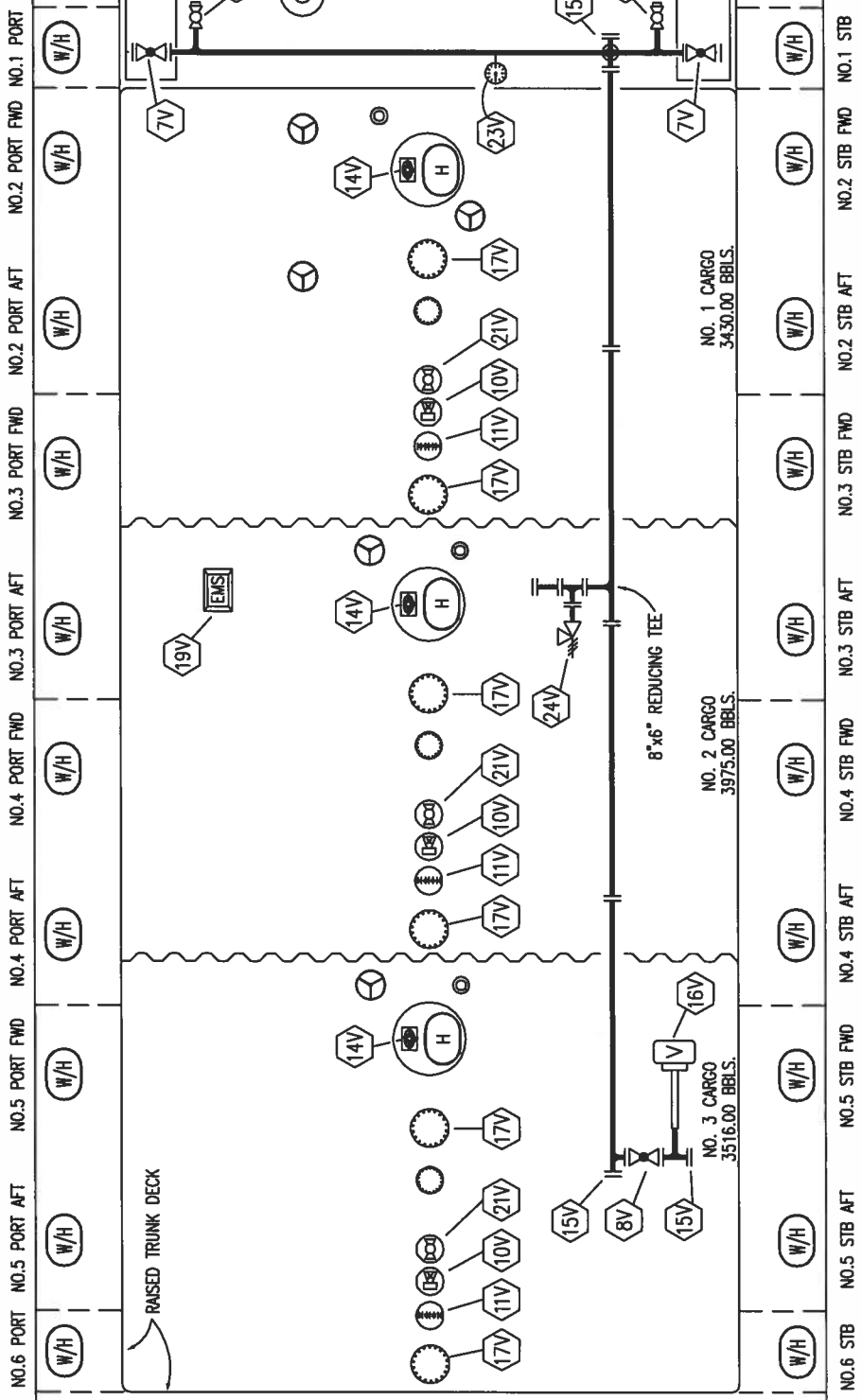
KIRBY INLAND MARINE

CARGO DIAGRAM

SCALE: NONE
 PAGE: 1 OF 3

REV. **1**

BOB



STERN



KIRBY INLAND MARINE

VAPOR DIAGRAM

REV.	DATE	DDA	KIM	REVISION DESCRIPTION
0	12/11/08	RB	JF	APPROVED
A	11/07/08	RB	JB	ISSUED FOR APPROVAL

SCALE: NONE
PAGE: 2 OF 3
REV. **0**

NO.	SIZE	DESCRIPTION
7V	8"	HEADER VALVE
8V	8"	VENT STACK VALVE
10V	1"	HIGH LEVEL/OVERFILL ALARM
11V	GAUGE STICK	
14V	SIGHT GLASS	
15V	INSPECTION PORT	
16V	VAPOR VENT STACK	
17V	BUTTERWORTH	
19V	EMERGENCY SYSTEM SHUTDOWN	
21V	HERMETIC GAUGE	
23V	PRESSURE GAUGE	
24V	6" PRESSURE RELIEF VALVE	
25V	1" HEADER LOW POINT DRAIN	

NOTE 1: DEEPWELL CARGO PUMP ABOVE DECK PIPING

NO. 1 CARGO 3430.00 BBLs.

NO. 2 CARGO 3975.00 BBLs.

NO. 3 CARGO 3516.00 BBLs.

8"x6" REDUCING TEE

NOTE 1

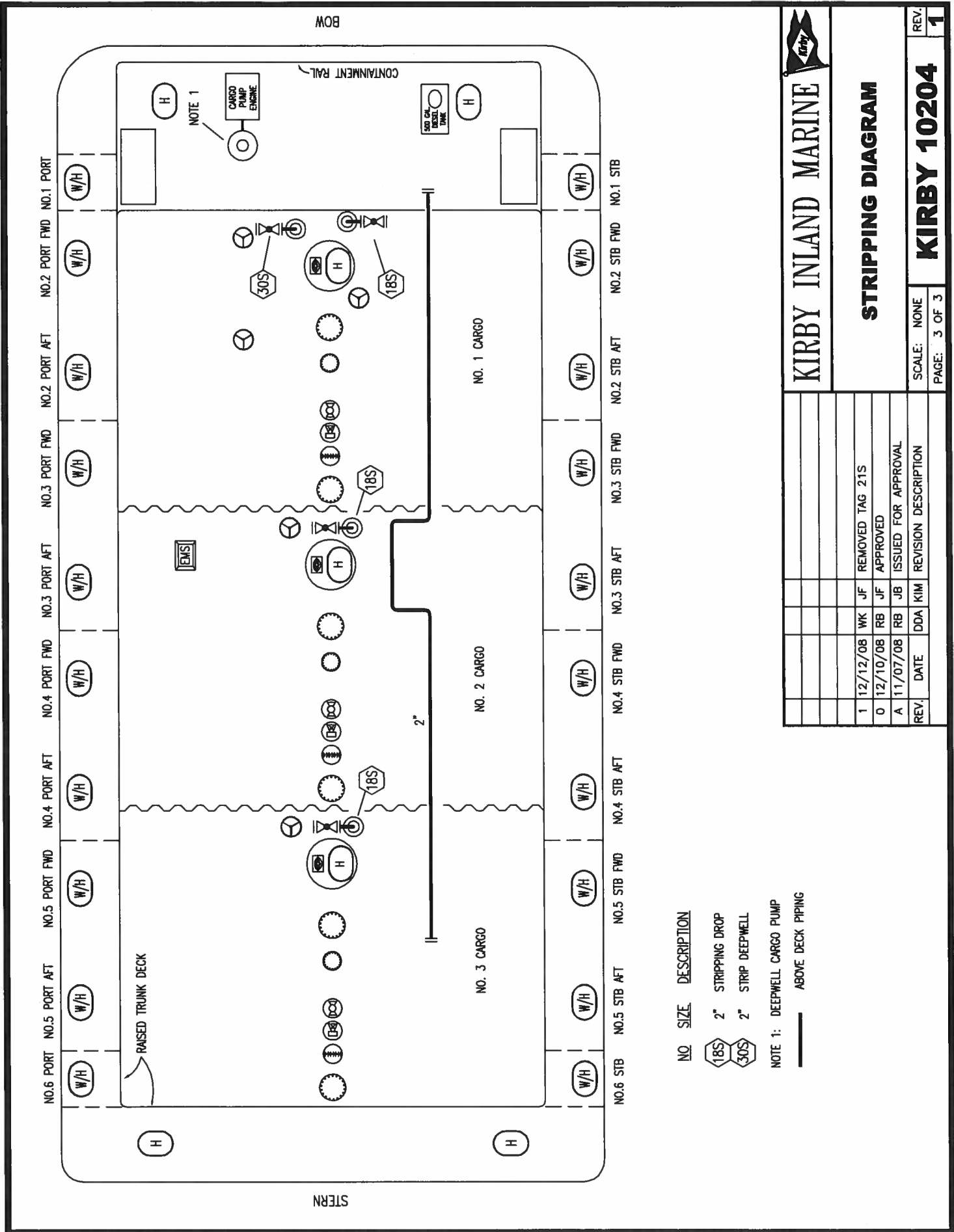
EMS

RAISED TRUNK DECK


CONTAINMENT RAIL

CARGO PUMP ENGINE

500 GALS. DIESEL TANK



NO. SIZE DESCRIPTION
 18S 2" STRIPPING DROP
 30S 2" STRIP DEEPWELL
 NOTE 1: DEEPWELL CARGO PUMP
 — ABOVE DECK PIPING



KIRBY INLAND MARINE

STRIPPING DIAGRAM

REV.	DATE	DDA	KIM	REVISION DESCRIPTION
1	12/12/08	WK	JF	REMOVED TAG 215
0	12/10/08	RB	JF	APPROVED
A	11/07/08	RB	JB	ISSUED FOR APPROVAL

SCALE: NONE	PAGE: 3 OF 3
KIRBY 10204	
REV.	1