

KIRBY INLAND MARINE

CARGO DIAGRAM

SCALE: NONE	REV. 1
PAGE: 1 OF 3	

NO	SIZE	DESCRIPTION
1C	8"	CARGO TANK VALVE
2C	8"	LOAD VALVE
3C	8"	MASTER SUCTION VALVE
4C	8"	DISCHARGE VALVE
5C	8"	HEADER VALVE
8C	8"	RELIEF VALVE
9C	6"	CHECK VALVE
12C	1"	BURP VALVE RETURN TO CARGO TANK
13C	10"	CARGO PIPING BLOCK VALVE
15C	2"	BYPASS VALVE (AROUND CHECK VALVE)
16C		PRESSURE GAUGE
17C	18"	CLEAN OUT (C.O.)
22C	20"	BUTTERWORTH
24C	1"	FLOW INDICATOR

REV.	DATE	BY	DESCRIPTION
1	01/29/09	RB	DELETE 9C
0	12/10/08	RB	APPROVED
A	11/07/08	RB	ISSUED FOR APPROVAL

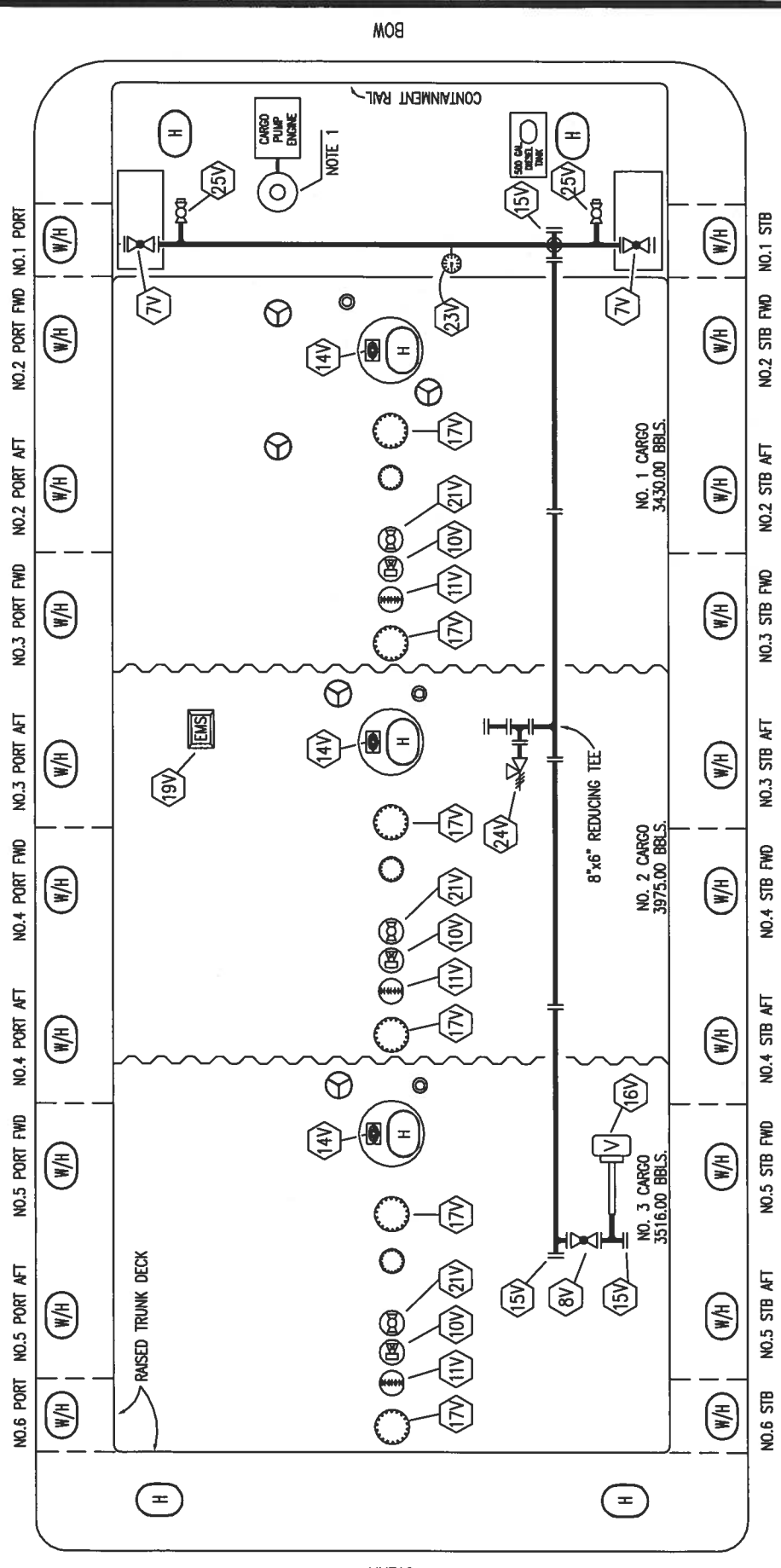
NO.	DESCRIPTION
NOTE 1:	DEEPWELL CARGO PUMP
---	BELOW DECK PIPING
---	ABOVE DECK PIPING



KIRBY INLAND MARINE

VAPOR DIAGRAM

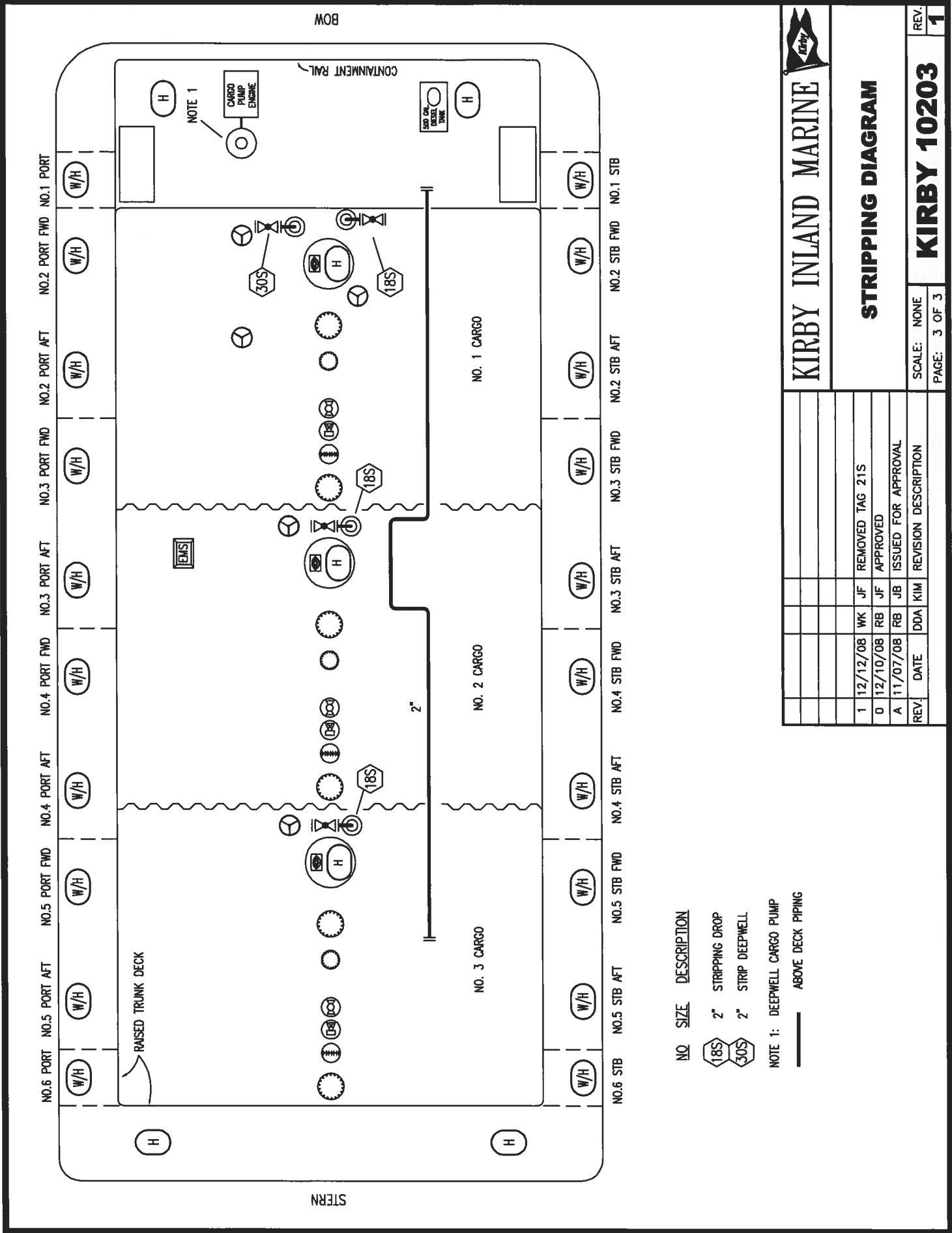
SCALE: NONE
PAGE: 2 OF 3
REV. 0



- | | |
|---------|---------------------------|
| NO. 7V | HERMETIC GAUGE |
| NO. 8V | PRESSURE GAUGE |
| NO. 10V | 6" PRESSURE RELIEF VALVE |
| NO. 11V | 1" HEADER LOW POINT DRAIN |
| NO. 14V | SIGHT GLASS |
| NO. 15V | INSPECTION PORT |
| NO. 16V | VAPOR VENT STACK |
| NO. 17V | BUTTERWORTH |
| NO. 19V | EMERGENCY SYSTEM SHUTDOWN |

NOTE 1: DEEPWELL CARGO PUMP ABOVE DECK PIPING


REV.	DATE	DDA	KIM	REVISION DESCRIPTION
0	12/11/08	RB	JF	APPROVED
A	11/07/08	RB	JB	ISSUED FOR APPROVAL



NO. SIZE DESCRIPTION

- 18S 2" STRIPPING DROP
- 30S 2" STRIP DEEPWELL

NOTE 1: DEEPWELL CARGO PUMP
 — ABOVE DECK PIPING



KIRBY INLAND MARINE

STRIPPING DIAGRAM

REV.	DATE	DDA	KIM	REVISION DESCRIPTION
1	12/12/08	WK	JF	REMOVED TAG 215
0	12/10/08	RB	JF	APPROVED
A	11/07/08	RB	JB	ISSUED FOR APPROVAL

SCALE: NONE	PAGE: 3 OF 3
KIRBY 10203	
REV. 1	