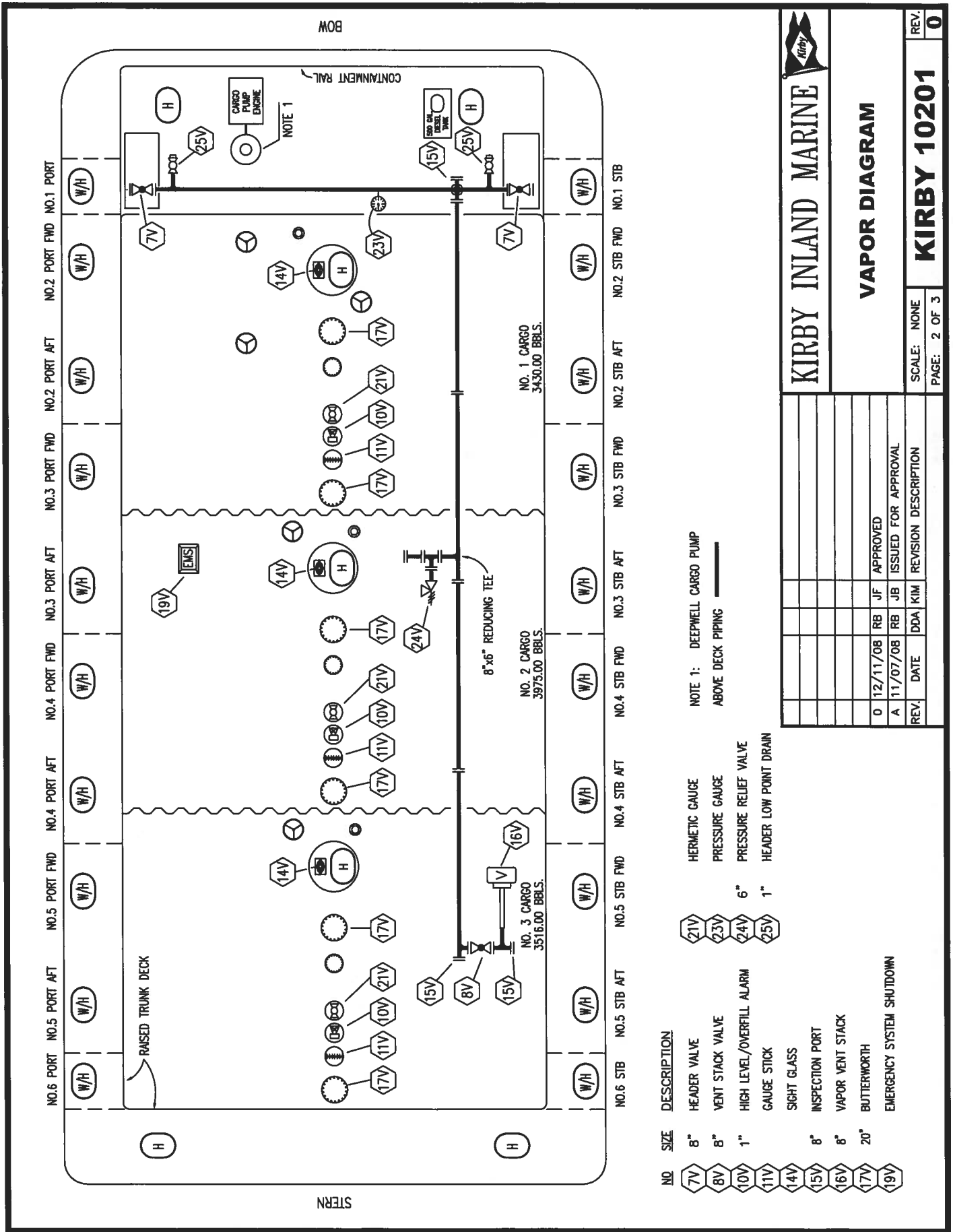


KIRBY INLAND MARINE

CARGO DIAGRAM

KIRBY 10201



KIRBY INLAND MARINE

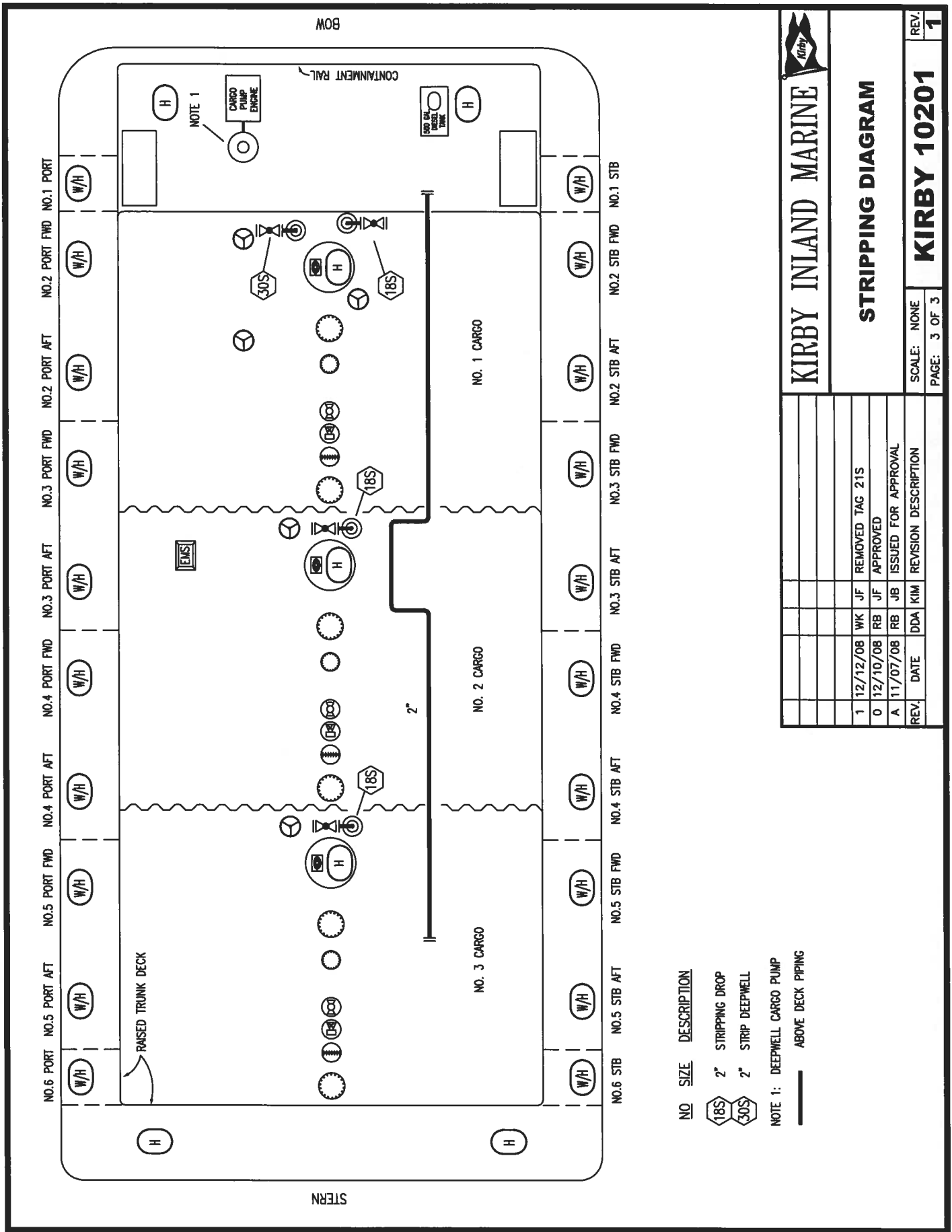
VAPOR DIAGRAM

SCALE:	NONE
PAGE:	2 OF 3
REV.	0

NO.	SIZE	DESCRIPTION
7V	8"	HEADER VALVE
8V	8"	VENT STACK VALVE
10V	1"	HIGH LEVEL/OVERFILL ALARM
11V	GAUGE STICK	
14V	SIGHT GLASS	
15V	8"	INSPECTION PORT
16V	8"	VAPOR VENT STACK
17V	20"	BUTTERWORTH
19V		EMERGENCY SYSTEM SHUTDOWN
21V		HERMETIC GAUGE
23V		PRESSURE GAUGE
24V	6"	PRESSURE RELIEF VALVE
25V	1"	HEADER LOW POINT DRAIN

NOTE 1: DEEPWELL CARGO PUMP ABOVE DECK PIPING

REV.	DATE	DATE	DDA	KIM	REVISION DESCRIPTION
0	12/11/08	RB	JF	APPROVED	
A	11/07/08	RB	JB	ISSUED FOR APPROVAL	



KIRBY INLAND MARINE

STRIPPING DIAGRAM

SCALE: NONE	REV. 1
PAGE: 3 OF 3	

- NO SIZE DESCRIPTION
- 18S 2" STRIPPING DROP
- 30S 2" STRIP DEEPWELL
- NOTE 1: DEEPWELL CARGO PUMP
- ABOVE DECK PIPING

REV.	DATE	DDA	KIM	REVISION DESCRIPTION
1	12/12/08	WK	JF	REMOVED TAG 21S
0	12/10/08	RB	JF	APPROVED
A	11/07/08	RB	JB	ISSUED FOR APPROVAL