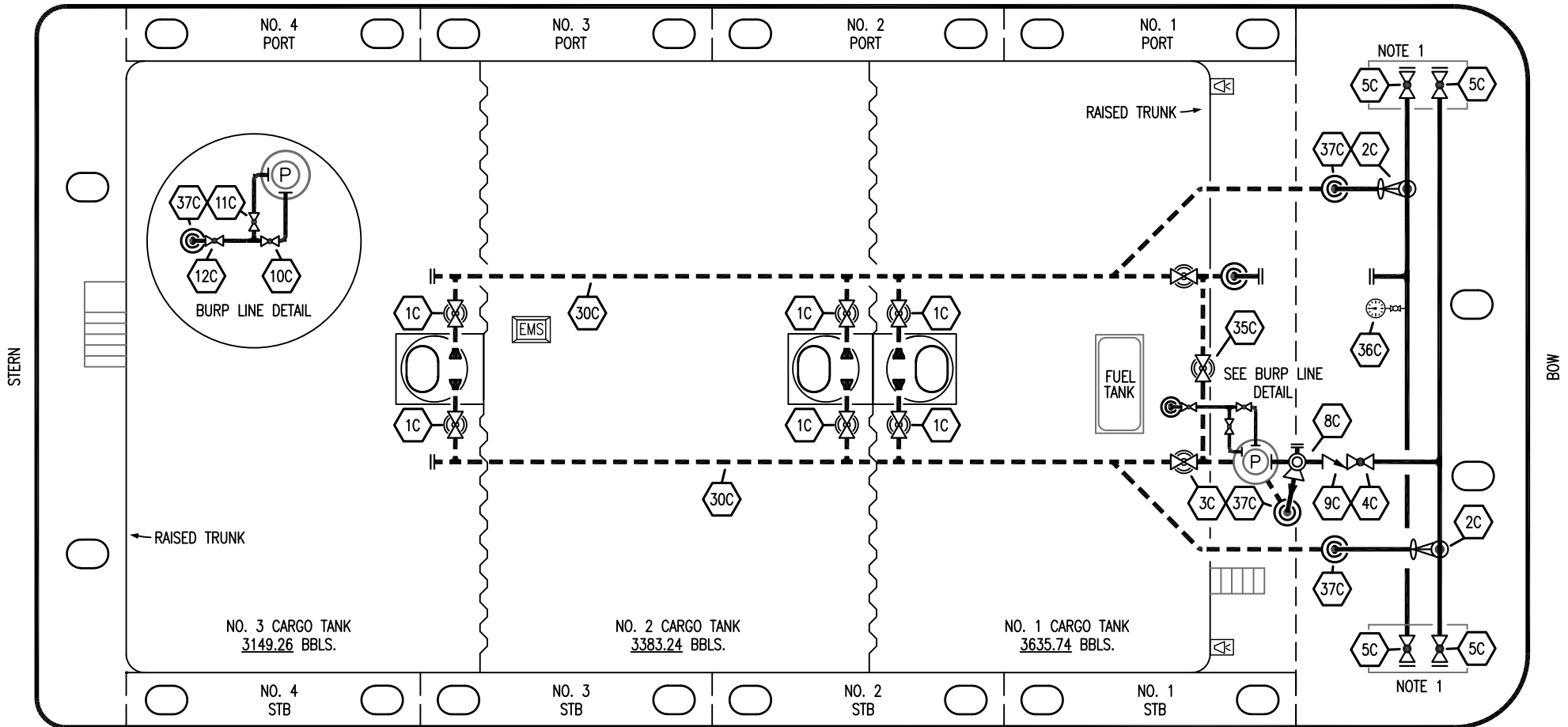


PORT



STERN

BOW


STARBOARD

NO	DESCRIPTION	NO	DESCRIPTION
1C	CARGO TANK VALVE	12C	BURP VALVE RETURN TO CARGO TANK
2C	LOAD VALVE	16C	DISCHARGE PRESSURE GAUGE
3C	MASTER SUCTION VALVE	19C	CARGO HEADER
4C	DISCHARGE VALVE	30C	CARGO PIPELINE
5C	HEADER VALVE	35C	CROSSOVER VALVE
8C	RELIEF VALVE	36C	PRESSURE GAUGE
9C	CHECK VALVE	37C	CARGO DROP
10C	BURP VALVE	—	— ABOVE DECK PIPING
11C	BLEED OFF VALVE	---	--- BELOW DECK PIPING

NOTE 1: CONTAINMENT P/S

EX: SMS 213

REV.	DATE	BY	CHK	APP	REVISION DESCRIPTION
1	02/29/24	MRV	DDA	DAR	REVISED PER CLIENT COMMENTS
0	01/15/24	MRV	DDA	DAR	ISSUED FOR APPROVAL

KIRBY INLAND MARINE 

CARGO

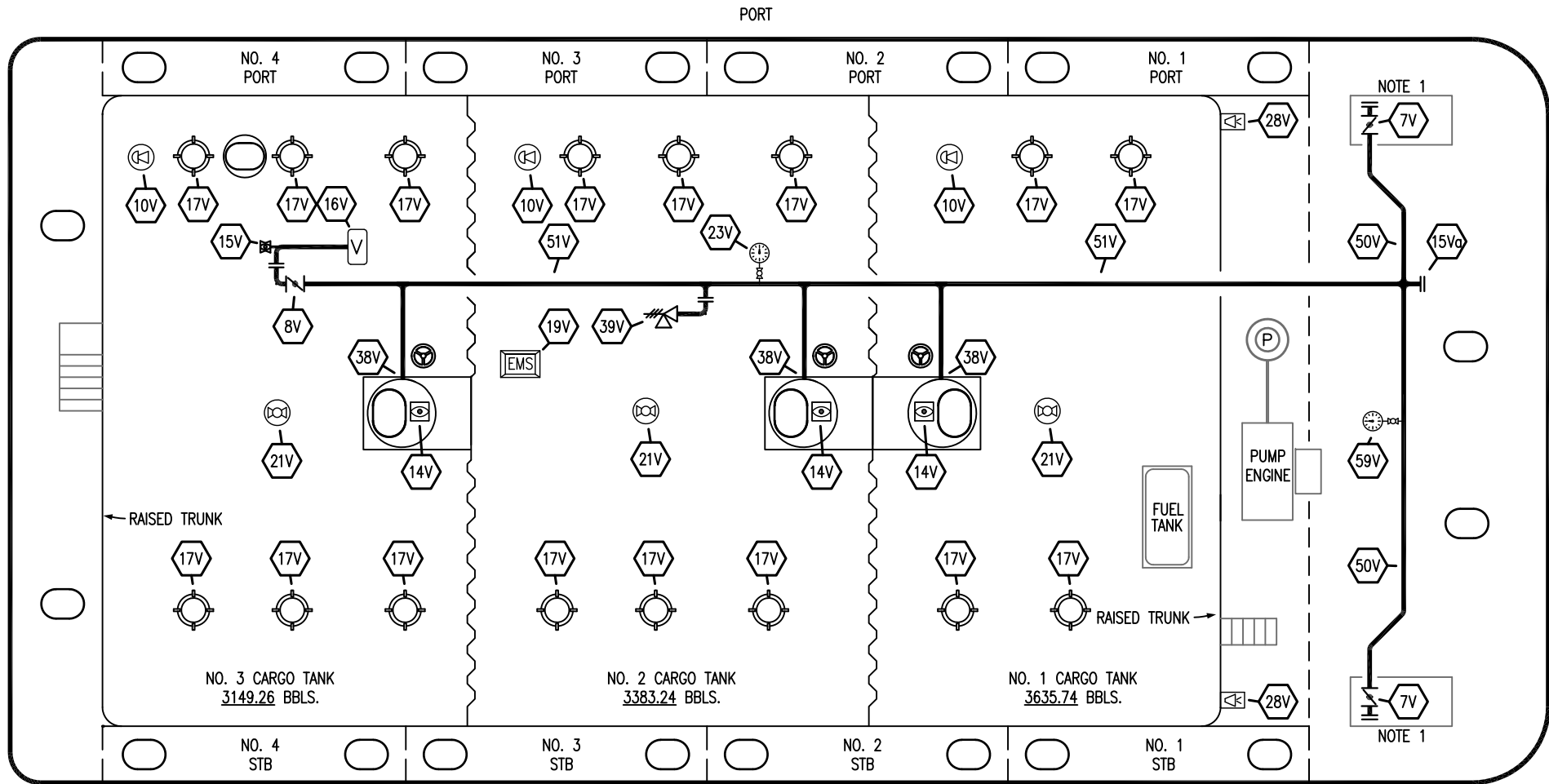
PIPING FLOW DIAGRAM

SCALE: NONE

KIRBY 10141

REV. 1

PAGE: 1 OF 3



NO	DESCRIPTION	NO	DESCRIPTION
7V	HEADER VALVE	21V	HERMETIC GAUGE
8V	VENT STACK VALVE	23V	PRESSURE GAUGE
10V	HIGH LEVEL/OVERFILL ALARM	28V	DOCK CONNECTION ALARM
14V	SIGHT GLASS W/GAUGE TREE	39V	PRESSURE/VACUUM VALVE
15V	INSPECTION PORT	38V	VAPOR PENETRATION (C)
15Va	INSPECTION PORT	50V	VAPOR HEADER
16V	VAPOR VENT STACK	51V	VAPOR PIPELINE
17V	BUTTERWORTH	59V	PRESS/VAC GAUGE
19V	EMERGENCY ENGINE SHUT DOWN		— ABOVE DECK PIPING

NOTE 1: CONTAINMENT P/S

EX: SMS 213

REV.	DATE	BY	CHK	APP	REVISION DESCRIPTION
1	02/29/24	MRV	DDA	DAR	REVISED PER CLIENT COMMENTS
0	01/15/24	MRV	DDA	DAR	ISSUED FOR APPROVAL

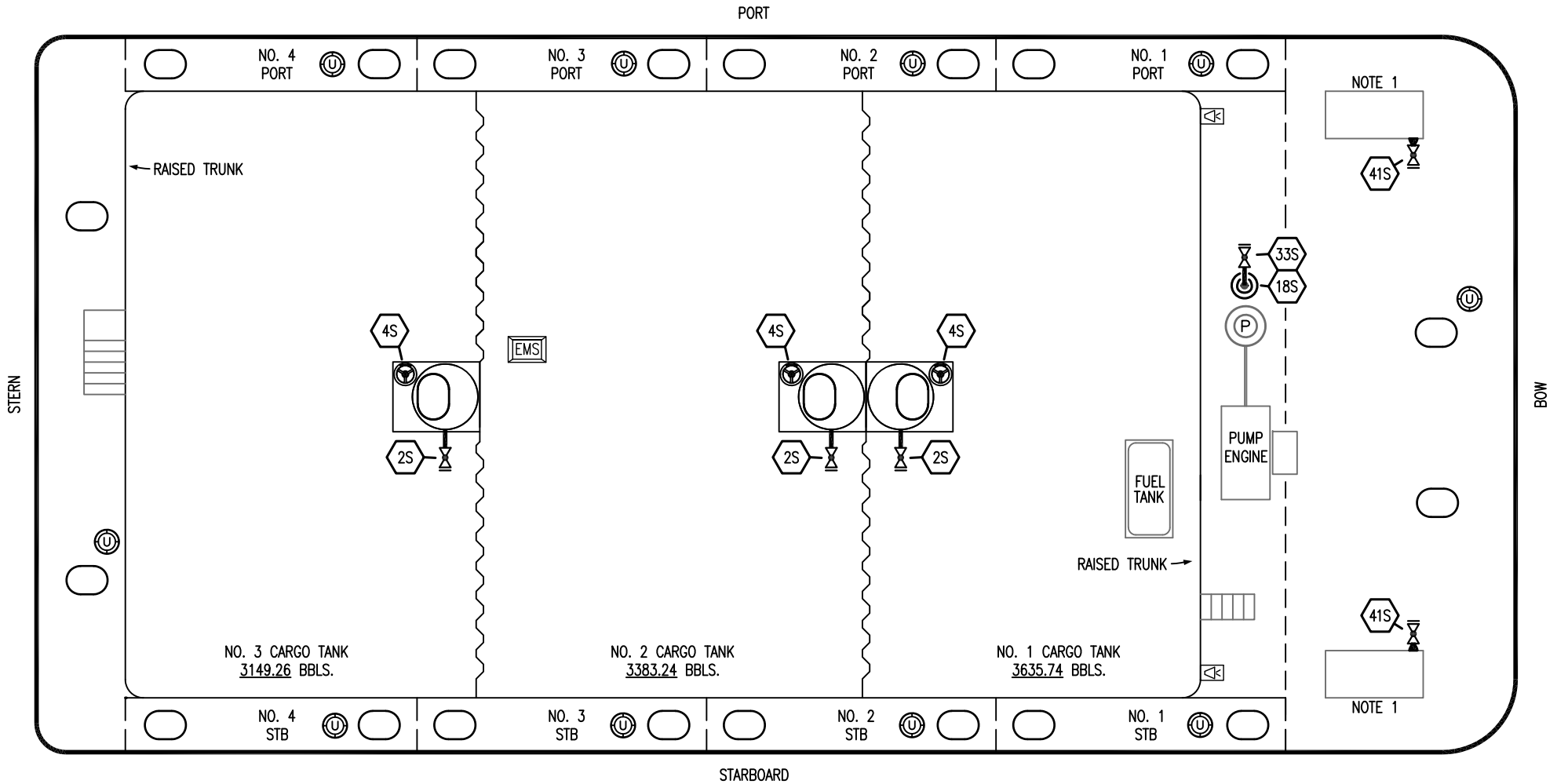
KIRBY INLAND MARINE


VAPOR PIPING FLOW DIAGRAM

KIRBY 10141

REV. **1**

SCALE: NONE
PAGE: 2 OF 3




NO	DESCRIPTION
2S	CARGO SUMP SUCTION VALVE
4S	CARGO TANK SUCTION VALVE
11S	LOWER CARGO PIPELINE SUCTION VALVE
18S	STRIPPING DROP 
33S	PUMP WELL SUCTION VALVE
41S	CONTAINMENT DRAIN VALVE W/ CAP

NOTE 1: CONTAINMENT P/S

EX: SMS 213

REV.	DATE	BY	CHK	APP	REVISION DESCRIPTION
1	02/29/24	MRV	DDA	DAR	REVISED PER CLIENT COMMENTS
0	01/15/24	MRV	DDA	DAR	ISSUED FOR APPROVAL

KIRBY INLAND MARINE 

**STRIPPING
PIPING FLOW DIAGRAM**

SCALE: NONE	KIRBY 10141	REV. 1
PAGE: 3 OF 3		