

NOTE 1: CONTAINMENT P/S

STARBOARD

- |     |                          |     |                                    |
|-----|--------------------------|-----|------------------------------------|
| NO  | DESCRIPTION              | NO  | DESCRIPTION                        |
| 1C  | 8" CARGO TANK VALVE      | 12C | 1" BURP VALVE RETURN TO CARGO TANK |
| 2C  | 8" LOAD VALVE            | 16C | DISCHARGE PRESSURE GAUGE           |
| 3C  | 10" MASTER SUCTION VALVE | 19C | 8" CARGO HEADER                    |
| 4C  | 8" DISCHARGE VALVE       | 24C | 1" PIPE SIGHT GLASS                |
| 5C  | 8" HEADER VALVE          | 30C | 10" CARGO PIPELINE                 |
| 6C  | 8" SALVAGE VALVE         | 36C | PRESSURE GAUGE                     |
| 8C  | 6" RELIEF VALVE          | 37C | CARGO DROP                         |
| 9C  | 8" CHECK VALVE           | --- | ABOVE DECK PIPING                  |
| 10C | 1" BURP VALVE            | --- | BELOW DECK PIPING                  |
| 11C | 1" BLEED OFF VALVE       |     |                                    |

TRINITY MARINE PRODUCTS -- BARREL CAPACITY=10732

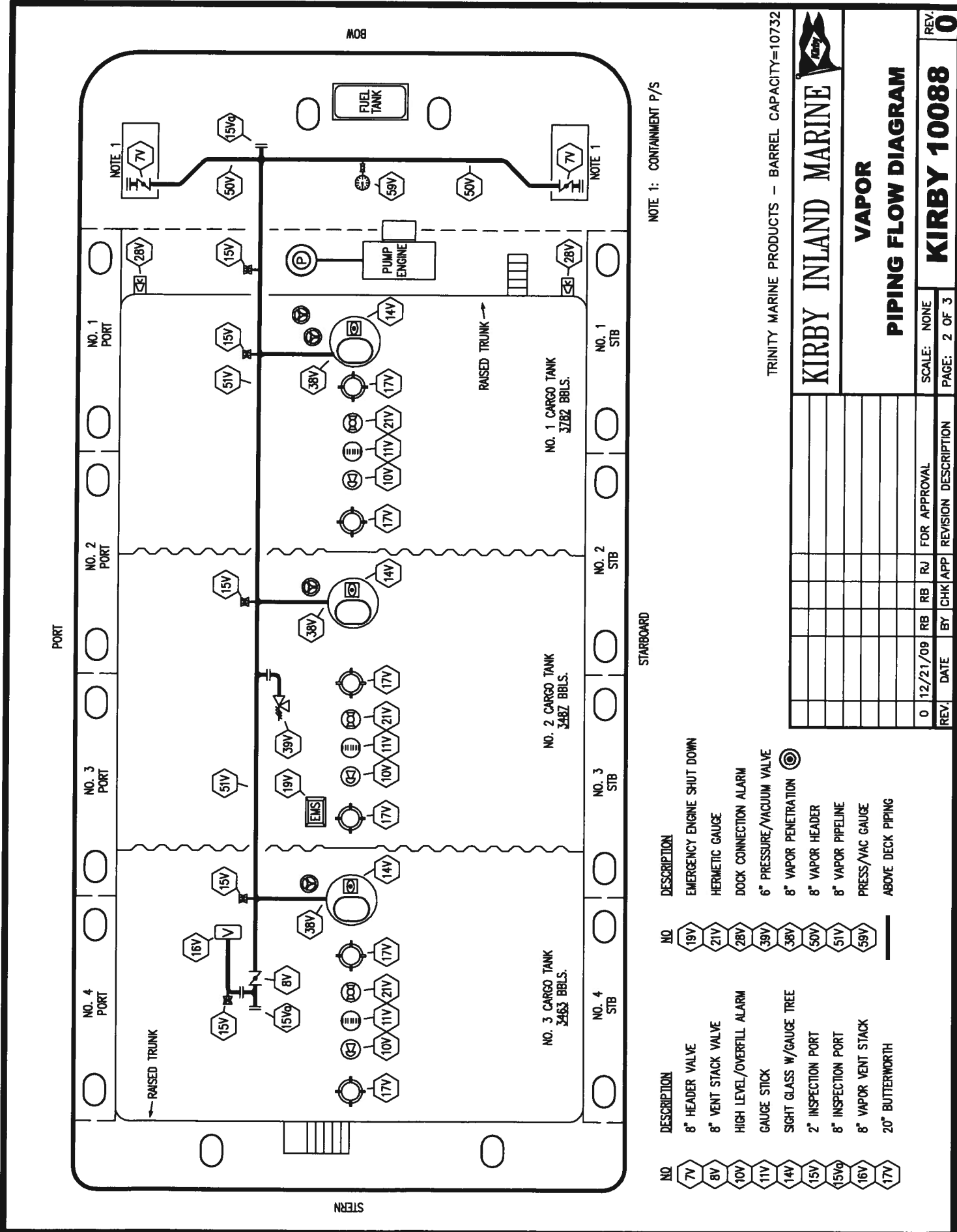


**CARGO**  
**PIPING FLOW DIAGRAM**

REV.	DATE	BY	CHK	APP	REVISION DESCRIPTION
0	12/21/09	RB	RJ		FOR APPROVAL

SCALE: NONE  
PAGE: 1 OF 3

REV. **0**  
**KIRBY 10088**



BOW

STERN

NOTE 1: CONTAINMENT P/S

STARBOARD

TRINITY MARINE PRODUCTS -- BARREL CAPACITY=10732



**VAPOR PIPING FLOW DIAGRAM**

**VAPOR**

SCALE: NONE

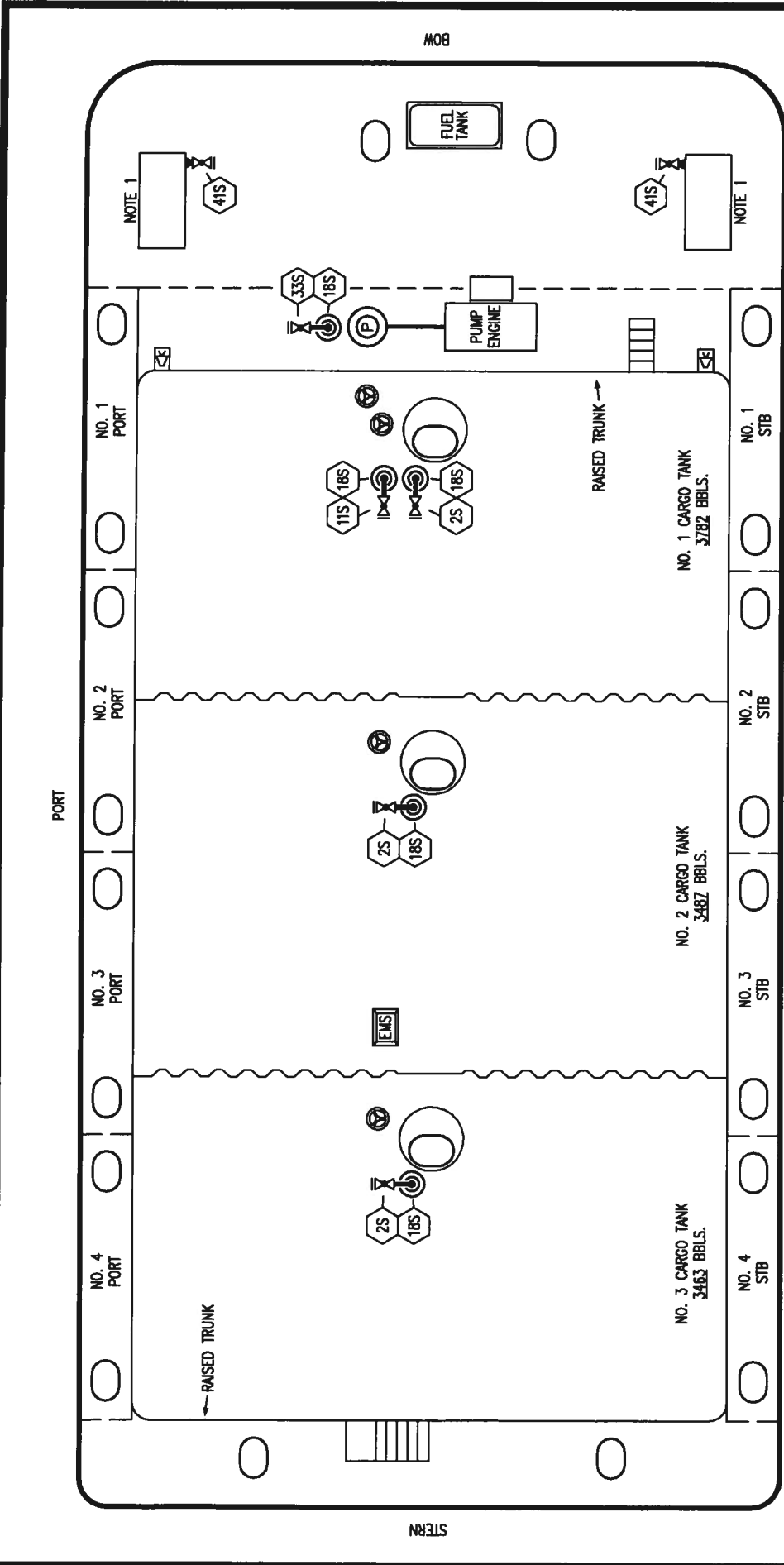
**KIRBY 10088**

PAGE: 2 OF 3

REV.	DATE	BY	CHK/APP	REVISION DESCRIPTION
0	12/21/09	RB	RJ	FOR APPROVAL

- | NO   | DESCRIPTION               | NO  | DESCRIPTION                |
|------|---------------------------|-----|----------------------------|
| 7V   | 8" HEADER VALVE           | 19V | EMERGENCY ENGINE SHUT DOWN |
| 8V   | 8" VENT STACK VALVE       | 21V | HERMETIC GAUGE             |
| 10V  | HIGH LEVEL/OVERFILL ALARM | 28V | DOCK CONNECTION ALARM      |
| 11V  | GAUGE STICK               | 38V | 6" PRESSURE/VACUUM VALVE   |
| 14V  | SIGHT GLASS W/GAUGE TREE  | 38V | 8" VAPOR PENETRATION       |
| 15V  | 2" INSPECTION PORT        | 50V | 8" VAPOR HEADER            |
| 15Vq | 8" INSPECTION PORT        | 51V | 8" VAPOR PIPELINE          |
| 16V  | 8" VAPOR VENT STACK       | 59V | PRESS/VAC GAUGE            |
| 17V  | 20" BUTTERWORTH           |     | ABOVE DECK PIPING          |

REV. **0**



NOTE 1: CONTAINMENT P/S

TRINITY MARINE PRODUCTS -- BARREL CAPACITY=10732



# STRIPPING PIPING FLOW DIAGRAM

NO.	DESCRIPTION	DATE	BY	CHK	APP	REVISION DESCRIPTION
0	12/21/09	RB	RJ			FOR APPROVAL

SCALE:	NONE
PAGE:	3 OF 3
REV.	0

- NO. 2S CARGO SUMP SUCTION VALVE
- NO. 11S LOWER CARGO PIPELINE SUCTION VALVE
- NO. 18S STRIPPING DROP
- NO. 33S PUMP WELL SUCTION VALVE
- NO. 41S CONTAINMENT DRAIN VALVE W/ CAP