

NOTE 1: CONTAINMENT P/S

STARBOARD

NOTE 1: CONTAINMENT P/S

- | | | | |
|-----|--------------------------|-----|------------------------------------|
| NO | DESCRIPTION | NO | DESCRIPTION |
| 1C | 8" CARGO TANK VALVE | 12C | 1" BURP VALVE RETURN TO CARGO TANK |
| 2C | 8" LOAD VALVE | 16C | DISCHARGE PRESSURE GAUGE |
| 3C | 10" MASTER SUCTION VALVE | 19C | 8" CARGO HEADER |
| 4C | 8" DISCHARGE VALVE | 24C | 1" PIPE SIGHT GLASS |
| 5C | 8" HEADER VALVE | 30C | 10" CARGO PIPELINE |
| 6C | 8" SALVAGE VALVE | 36C | PRESSURE GAUGE |
| 7C | 6" RELIEF VALVE | 37C | CARGO DROP |
| 8C | 8" CHECK VALVE | --- | ABOVE DECK PIPING |
| 9C | 1" BURP VALVE | --- | BELOW DECK PIPING |
| 10C | 1" BLEED OFF VALVE | | |
| 11C | | | |

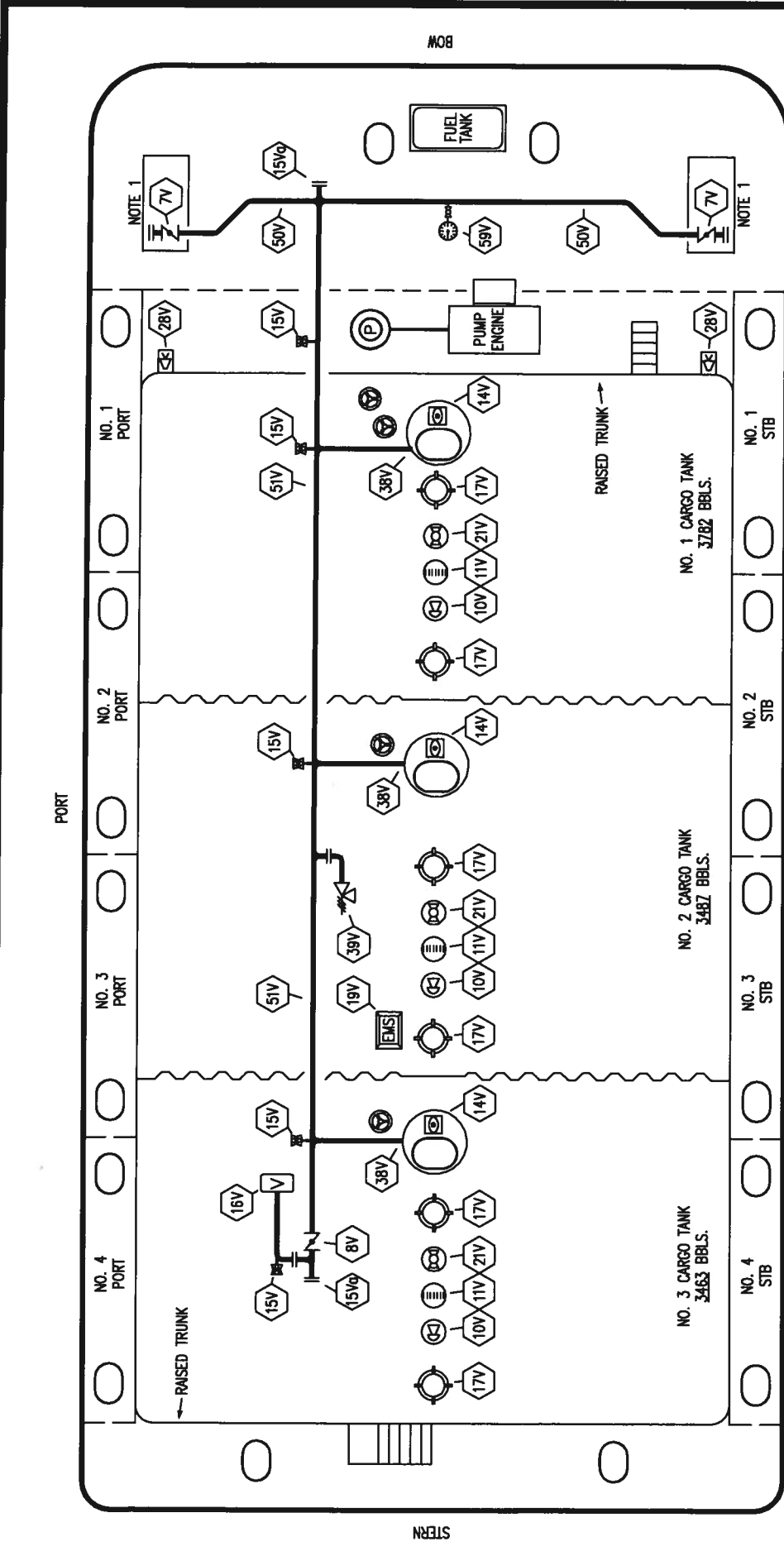
TRINITY MARINE PRODUCTS -- BARREL CAPACITY=10732



CARGO
PIPING FLOW DIAGRAM

REV.	DATE	BY	CHK	APP	REVISION DESCRIPTION	SCALE:	NONE
0	12/21/09	RB	RJ		FOR APPROVAL		
						PAGE:	1 OF 3

REV. **0**
KIRBY 10087



NOTE 1: CONTAINMENT P/S

STARBOARD

- | | | | |
|----------|---------------------------|---------|----------------------------|
| NO. 7V | 8" HEADER VALVE | NO. 19V | EMERGENCY ENGINE SHUT DOWN |
| NO. 8V | 8" VENT STACK VALVE | NO. 21V | HERMETIC GAUGE |
| NO. 10V | HIGH LEVEL/OVERFILL ALARM | NO. 28V | DOCK CONNECTION ALARM |
| NO. 11V | GAUGE STICK | NO. 39V | 6" PRESSURE/VACUUM VALVE |
| NO. 14V | SIGHT GLASS W/GAUGE TREE | NO. 38V | 8" VAPOR PENETRATION |
| NO. 15V | 2" INSPECTION PORT | NO. 50V | 8" VAPOR HEADER |
| NO. 15VQ | 8" INSPECTION PORT | NO. 51V | 8" VAPOR PIPELINE |
| NO. 16V | 8" VAPOR VENT STACK | NO. 59V | PRESS/VAC GAUGE |
| NO. 17V | 20" BUTTERWORTH | | ABOVE DECK PIPING |

TRINITY MARINE PRODUCTS -- BARREL CAPACITY=10732



VAPOR PIPING FLOW DIAGRAM

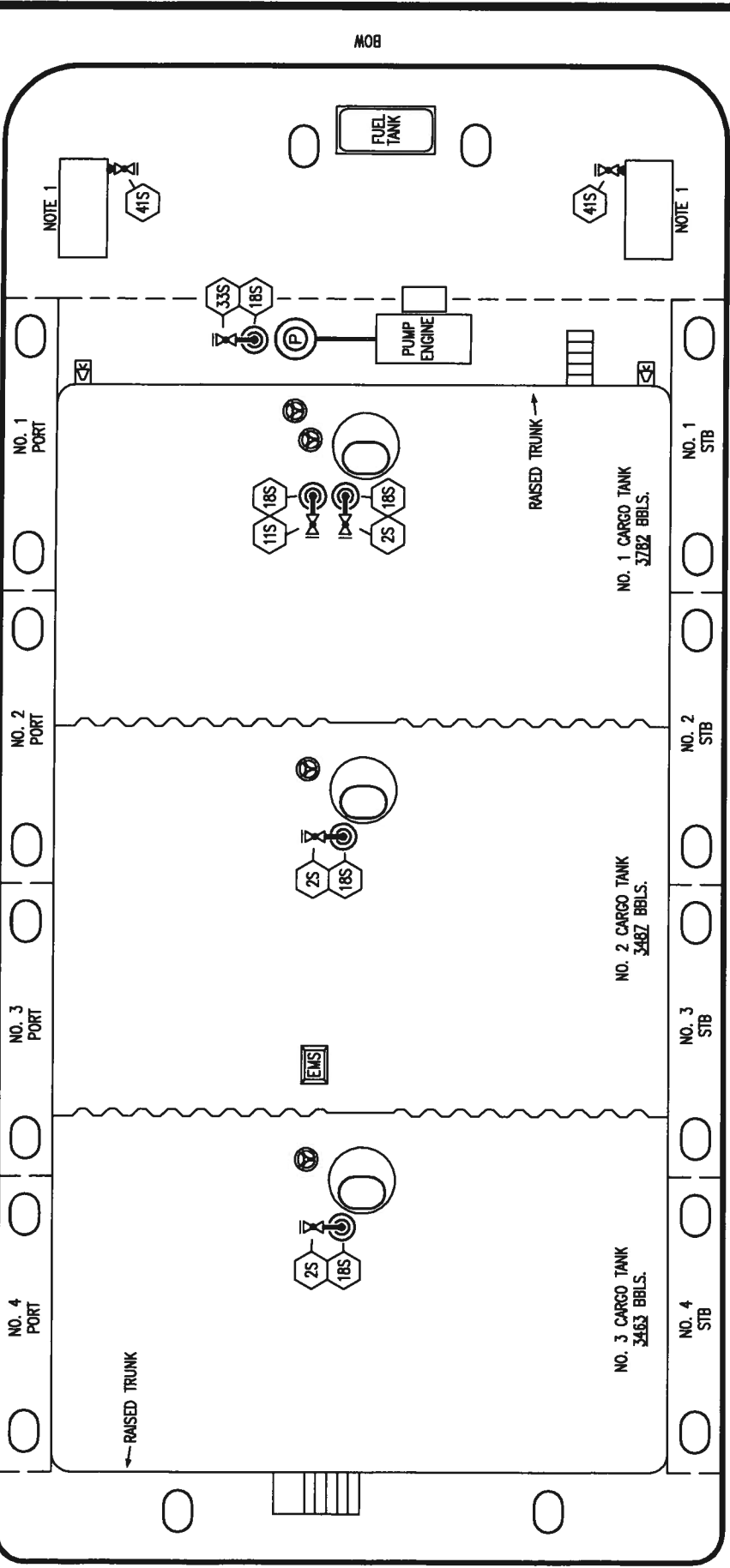
REV.	DATE	BY	CHK/APP	REVISION DESCRIPTION	SCALE:	NONE
0	12/21/09	RB	RJ	FOR APPROVAL		

KIRBY 10087

PAGE: 2 OF 3

REV. 0

PORT



STERN

STARBOARD

NOTE 1: CONTAINMENT P/S

TRINITY MARINE PRODUCTS - BARREL CAPACITY=10732



**STRIPPING
PIPING FLOW DIAGRAM**

REV.	DATE	BY	CHK/APP	RB	RJ	FOR APPROVAL	REVISION DESCRIPTION
0	12/21/09	RB					

SCALE:	NONE
PAGE:	3 OF 3
REV.	0

- NO** **DESCRIPTION**
- 2S CARGO SUMP SUCTION VALVE
 - 11S LOWER CARGO PIPELINE SUCTION VALVE
 - 18S STRIPPING DROP
 - 33S PUMP WELL SUCTION VALVE
 - 41S CONTAINMENT DRAIN VALVE W/ CAP