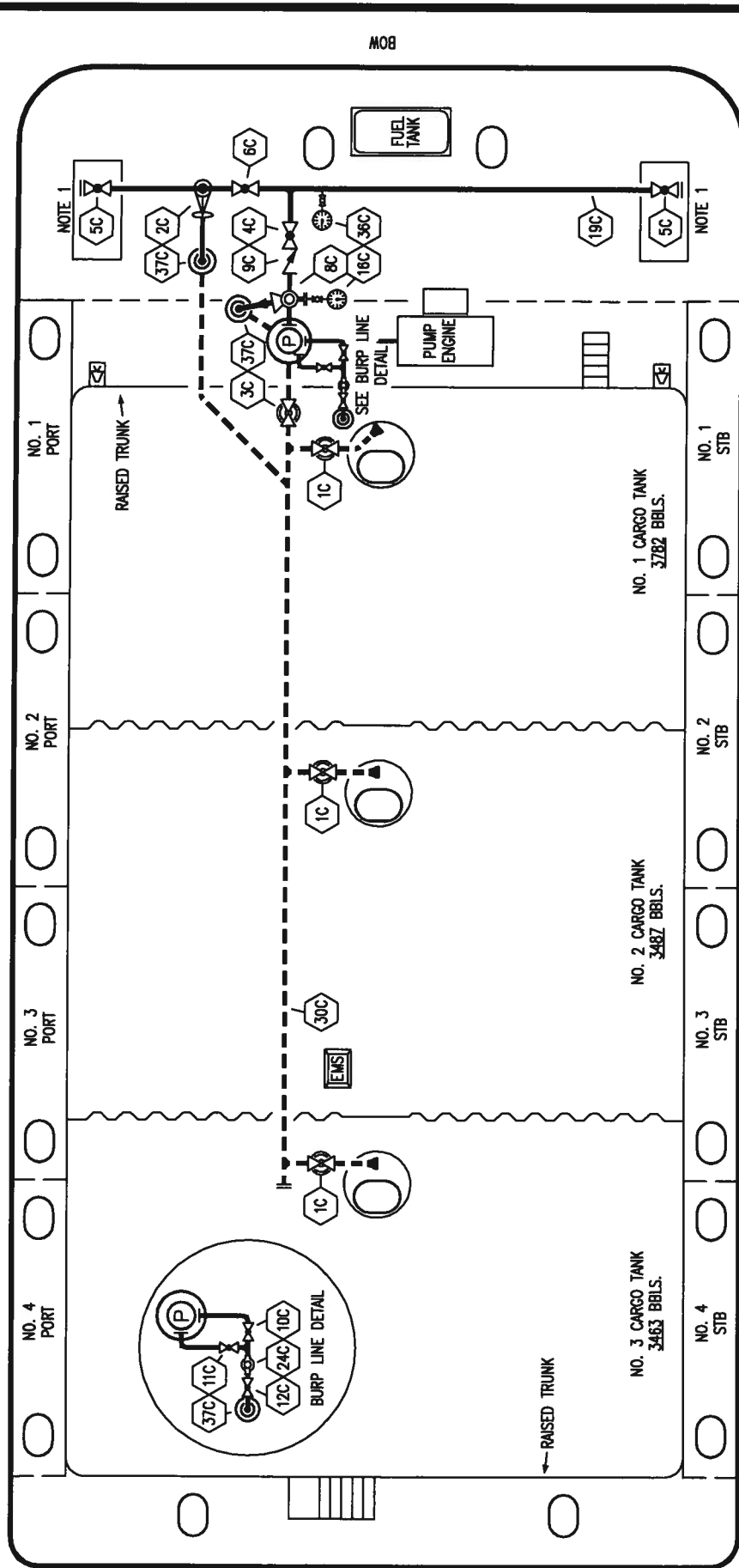


PORT



STERN

MOB

STARBOARD

NOTE 1: CONTAINMENT P/S

NOTE 1: CONTAINMENT P/S

NOTE 1: CONTAINMENT P/S

- NO 1C
- NO 2C
- NO 3C
- NO 4C
- NO 5C
- NO 6C
- NO 8C
- NO 9C
- NO 10C
- NO 11C

- NO 12C
- NO 16C
- NO 19C
- NO 24C
- NO 30C
- NO 36C
- NO 37C

- DESCRIPTION
- 8" CARGO TANK VALVE
- 8" LOAD VALVE
- 10" MASTER SUCTION VALVE
- 8" DISCHARGE VALVE
- 8" HEADER VALVE
- 8" SALVAGE VALVE
- 6" RELIEF VALVE
- 8" CHECK VALVE
- 1" BURP VALVE
- 1" BLEED OFF VALVE
- DESCRIPTION
- 1" BURP VALVE RETURN TO CARGO TANK
- DISCHARGE PRESSURE GAUGE
- 8" CARGO HEADER
- 1" PIPE SIGHT GLASS
- 10" CARGO PIPELINE
- PRESSURE GAUGE
- CARGO DROP
- ABOVE DECK PIPING
- BELOW DECK PIPING

TRINITY MARINE PRODUCTS - BARREL CAPACITY=10732



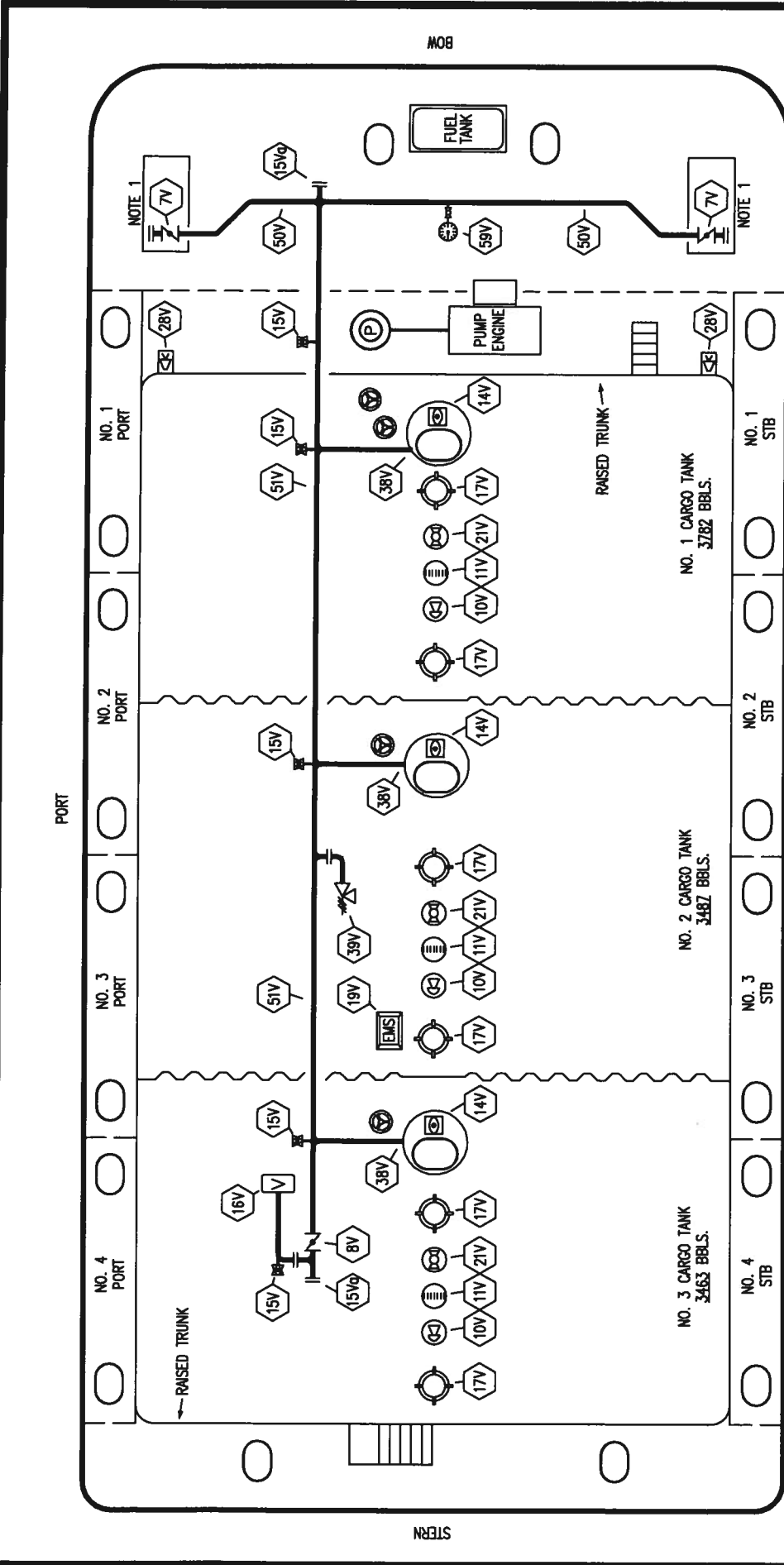
KIRBY INLAND MARINE

CARGO

PIPING FLOW DIAGRAM

REV.	DATE	BY	CHK	API	REVISION	DESCRIPTION
0	12/21/09	RB	RJ		FOR APPROVAL	
SCALE:	NONE					
PAGE:	1 OF 3					
REV.	0					

KIRBY 10084



NOTE 1: CONTAINMENT P/S

STARBOARD

TRINITY MARINE PRODUCTS -- BARREL CAPACITY=10732



KIRBY INLAND MARINE

VAPOR PIPING FLOW DIAGRAM

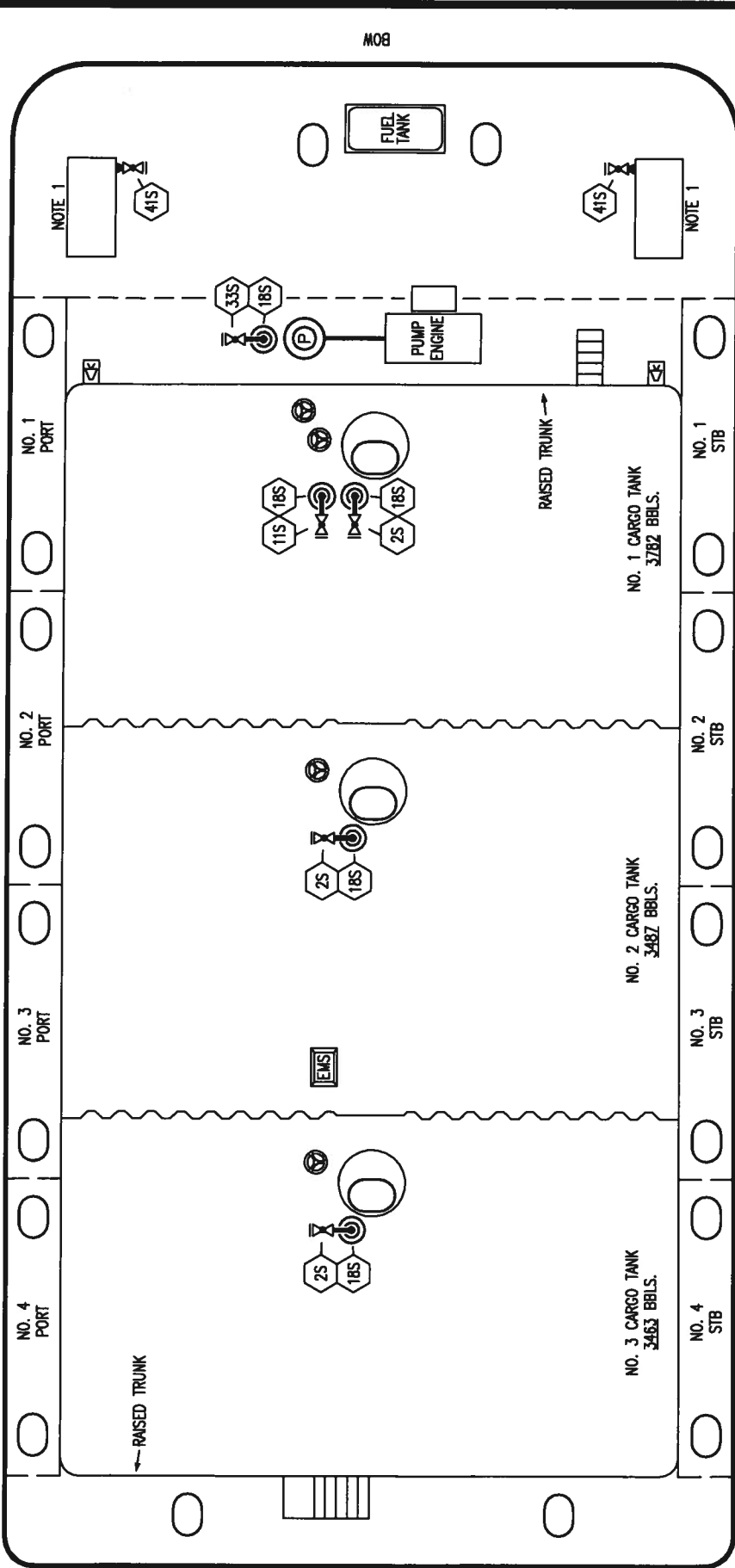
- | | | | |
|----------|---------------------------|---------|----------------------------|
| NO. 7V | 8" HEADER VALVE | NO. 19V | EMERGENCY ENGINE SHUT DOWN |
| NO. 8V | 8" VENT STACK VALVE | NO. 21V | HERMETIC GAUGE |
| NO. 10V | HIGH LEVEL/OVERFILL ALARM | NO. 28V | DOCK CONNECTION ALARM |
| NO. 11V | GAUGE STICK | NO. 39V | 6" PRESSURE/VACUUM VALVE |
| NO. 14V | SIGHT GLASS W/GAUGE TREE | NO. 38V | 8" VAPOR PENETRATION |
| NO. 15V | 2" INSPECTION PORT | NO. 50V | 8" VAPOR HEADER |
| NO. 15VQ | 8" INSPECTION PORT | NO. 51V | 8" VAPOR PIPELINE |
| NO. 16V | 8" VAPOR VENT STACK | NO. 59V | PRESS/VAC GAUGE |
| NO. 17V | 20" BUTTERWORTH | | ABOVE DECK PIPING |

REV.	DATE	BY	CHK	APP	REVISION DESCRIPTION
0	12/21/09	RB	RJ		FOR APPROVAL

SCALE: NONE
PAGE: 2 OF 3
KIRBY 10084

REV. 0

PORT



BOW

STERN

STARBOARD

NOTE 1: CONTAINMENT P/S

- NO. 2S
- NO. 11S
- NO. 18S
- NO. 33S
- NO. 41S

- DESCRIPTION
- CARGO SUMP SUCTION VALVE
- LOWER CARGO PIPELINE SUCTION VALVE
- STRIPPING DROP
- PUMP WELL SUCTION VALVE
- CONTAINMENT DRAIN VALVE W/ CAP

TRINITY MARINE PRODUCTS - BARREL CAPACITY=10732



KIRBY INLAND MARINE

STRIPPING

PIPING FLOW DIAGRAM

REV.	DATE	BY	CHK	APP	REVISION DESCRIPTION
0	12/21/09	RB	RJ		FOR APPROVAL

SCALE: NONE	REV. 0
PAGE: 3 OF 3	

KIRBY 10084