

NOTE 1: CONTAINMENT P/S

STARBOARD

NOTE 1: CONTAINMENT P/S

- | | | | |
|-----|--------------------------|-----|------------------------------------|
| NO | DESCRIPTION | NO | DESCRIPTION |
| 1C | 8" CARGO TANK VALVE | 12C | 1" BURP VALVE RETURN TO CARGO TANK |
| 2C | 8" LOAD VALVE | 16C | DISCHARGE PRESSURE GAUGE |
| 3C | 10" MASTER SUCTION VALVE | 19C | 8" CARGO HEADER |
| 4C | 8" DISCHARGE VALVE | 24C | 1" PIPE SIGHT GLASS |
| 5C | 8" HEADER VALVE | 30C | 10" CARGO PIPELINE |
| 6C | 8" SALVAGE VALVE | 36C | PRESSURE GAUGE |
| 7C | 6" RELIEF VALVE | 37C | CARGO DROP |
| 8C | 8" CHECK VALVE | --- | ABOVE DECK PIPING |
| 10C | 1" BURP VALVE | --- | BELOW DECK PIPING |
| 11C | 1" BLEED OFF VALVE | | |

TRINITY MARINE PRODUCTS -- BARREL CAPACITY=10732



KIRBY INLAND MARINE

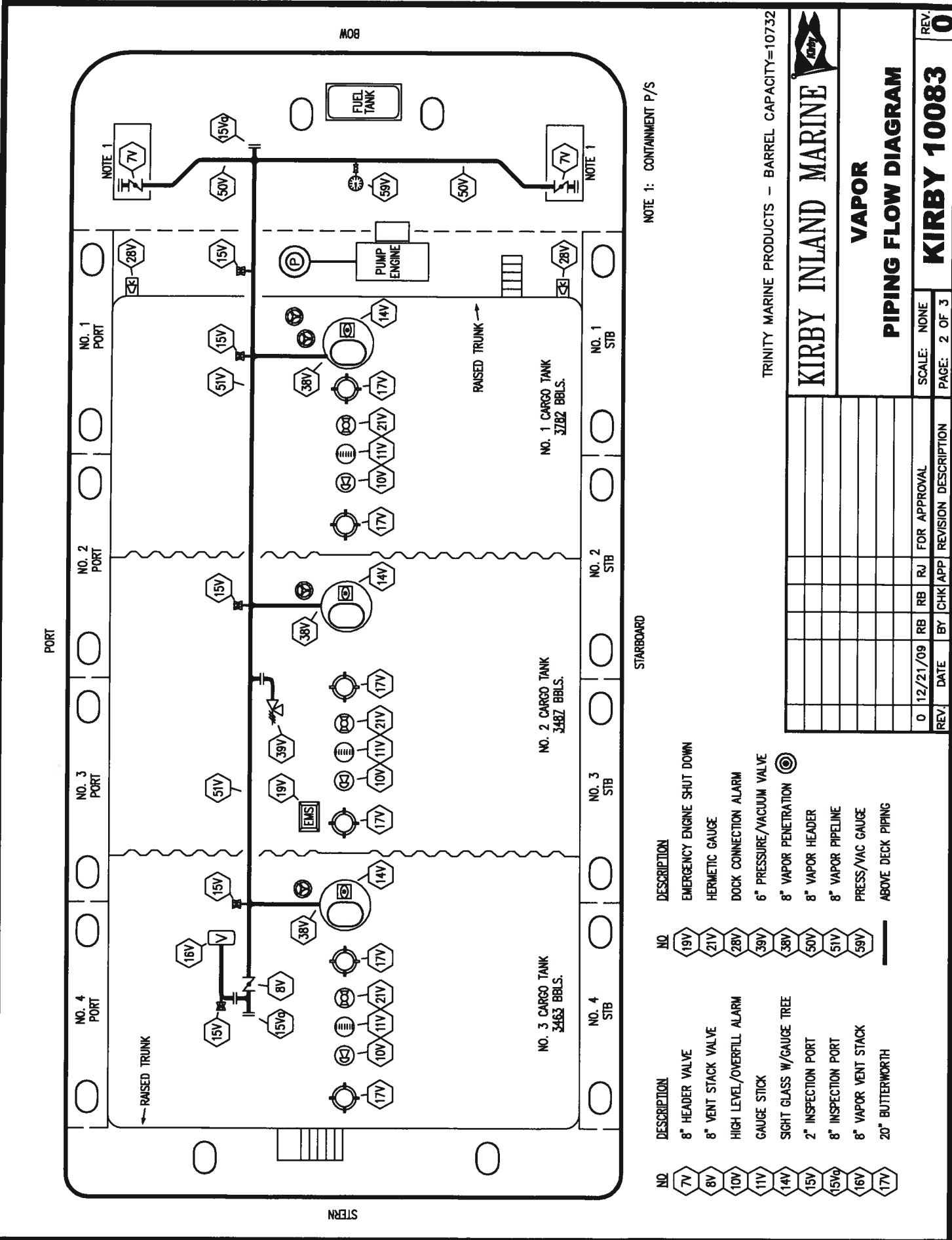
CARGO
PIPING FLOW DIAGRAM

REV.	DATE	BY	CHK/APP	REVISION	DESCRIPTION
0	12/21/09	RB	RJ	FOR APPROVAL	

SCALE: NONE
PAGE: 1 OF 3

KIRBY 10083

REV. **0**



NOTE 1: CONTAINMENT P/S

STARBOARD

NO	DESCRIPTION	NO	DESCRIPTION
7V	8" HEADER VALVE	19V	EMERGENCY ENGINE SHUT DOWN
8V	8" VENT STACK VALVE	21V	HERMETIC GAUGE
10V	HIGH LEVEL/OVERFILL ALARM	28V	DOCK CONNECTION ALARM
11V	GAUGE STICK	39V	6" PRESSURE/VACUUM VALVE
14V	SIGHT GLASS W/GAUGE TREE	38V	8" VAPOR PENETRATION
15V	2" INSPECTION PORT	50V	8" VAPOR HEADER
15VQ	8" INSPECTION PORT	51V	8" VAPOR PIPELINE
16V	8" VAPOR VENT STACK	59V	PRESS/VAC GAUGE
17V	20" BUTTERWORTH		ABOVE DECK PIPING

TRINITY MARINE PRODUCTS -- BARREL CAPACITY=10732

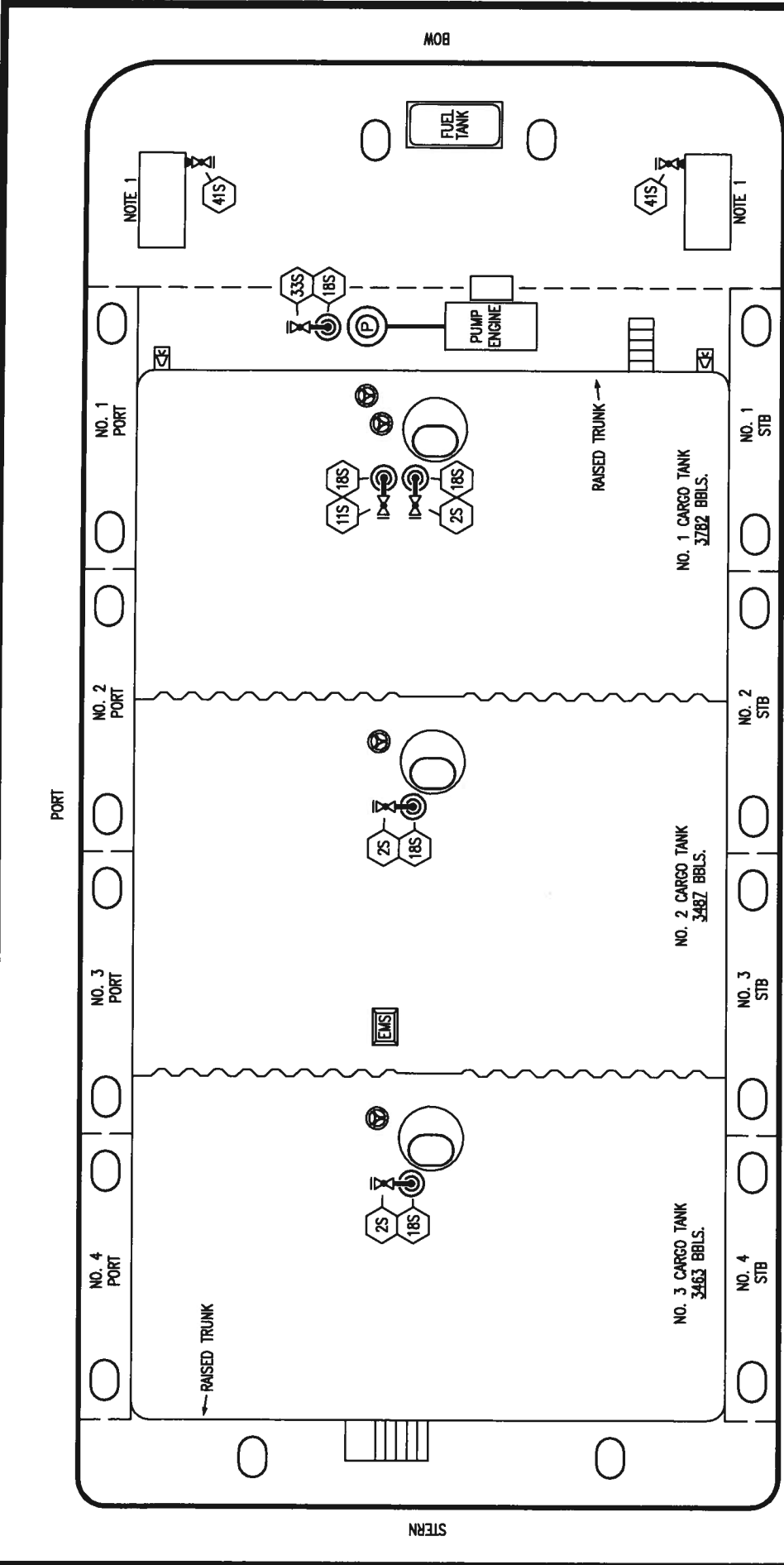


VAPOR PIPING FLOW DIAGRAM

REV.	DATE	BY	CHK	APP	REVISION	DESCRIPTION
0	12/21/09	RB	RJ		FOR APPROVAL	

SCALE: NONE
PAGE: 2 OF 3

KIRBY 10083
REV. 0



NOTE 1: CONTAINMENT P/S

STARBOARD

TRINITY MARINE PRODUCTS -- BARREL CAPACITY=10732



KIRBY INLAND MARINE

**STRIPPING
PIPING FLOW DIAGRAM**

REV.	DATE	BY	CHK	APP	REVISION DESCRIPTION
0	12/21/09	RB	RJ		FOR APPROVAL

SCALE: NONE
PAGE: 3 OF 3

REV. **0**

KIRBY 10083

- DESCRIPTION**
- CARGO SUMP SUCTION VALVE
 - LOWER CARGO PIPELINE SUCTION VALVE
 - STRIPPING DROP
 - PUMP WELL SUCTION VALVE
 - CONTAINMENT DRAIN VALVE W/ CAP

- NO 2S
- 11S
- 18S
- 33S
- 41S