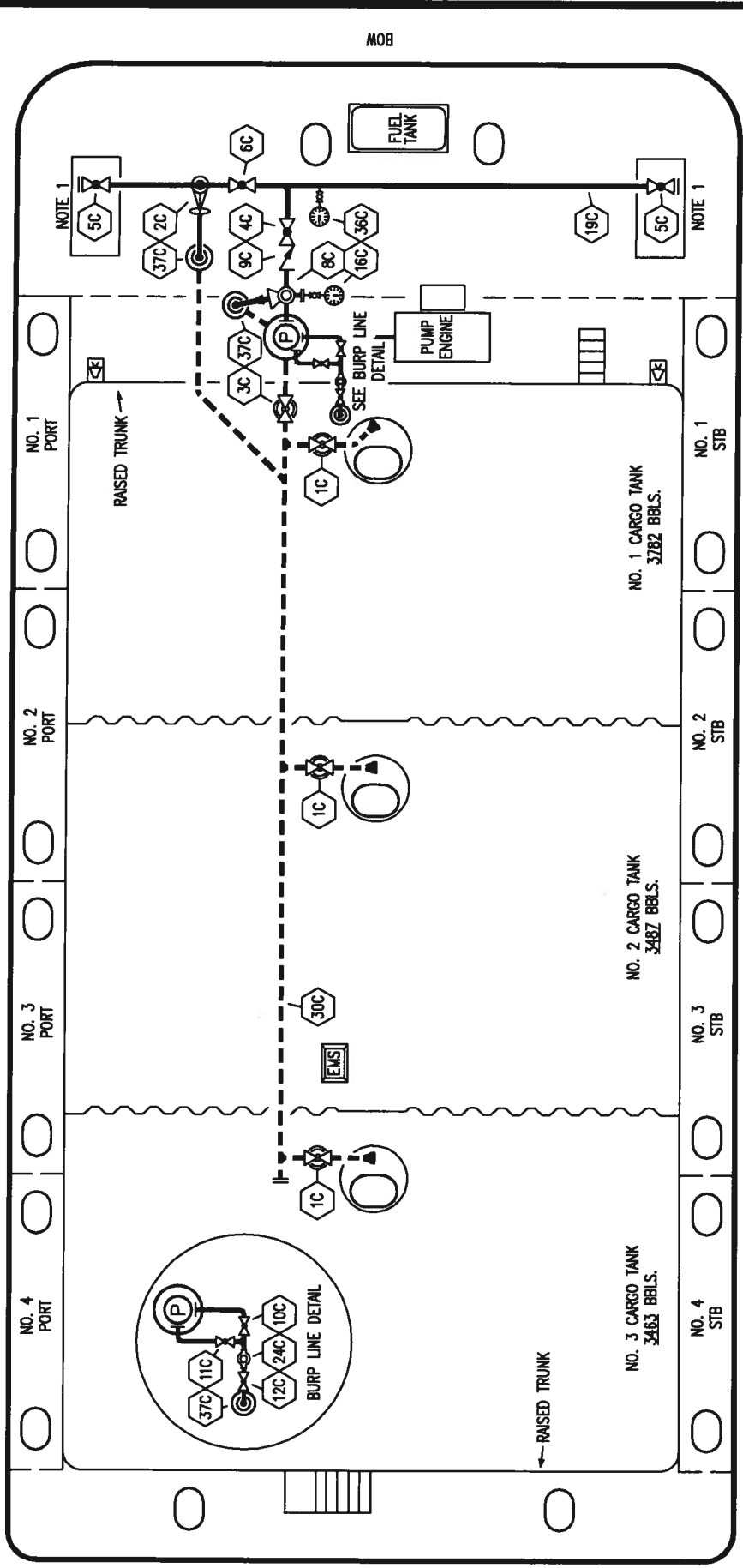


PORT



STERN

NOTE 1: CONTAMNMENT P/S

STARBOARD

- | | | | |
|-----|--------------------------|-----|------------------------------------|
| NO | DESCRIPTION | NO | DESCRIPTION |
| 1C | 8" CARGO TANK VALVE | 12C | 1" BURP VALVE RETURN TO CARGO TANK |
| 2C | 8" LOAD VALVE | 16C | DISCHARGE PRESSURE GAUGE |
| 3C | 10" MASTER SUCTION VALVE | 19C | 8" CARGO HEADER |
| 4C | 8" DISCHARGE VALVE | 24C | 1" PIPE SIGHT GLASS |
| 5C | 8" HEADER VALVE | 30C | 10" CARGO PIPELINE |
| 6C | 8" SALVAGE VALVE | 36C | PRESSURE GAUGE |
| 7C | 6" RELIEF VALVE | 37C | CARGO DROP |
| 8C | 8" CHECK VALVE | --- | ABOVE DECK PIPING |
| 9C | 1" BURP VALVE | --- | BELOW DECK PIPING |
| 10C | 1" BLEED OFF VALVE | | |
| 11C | | | |

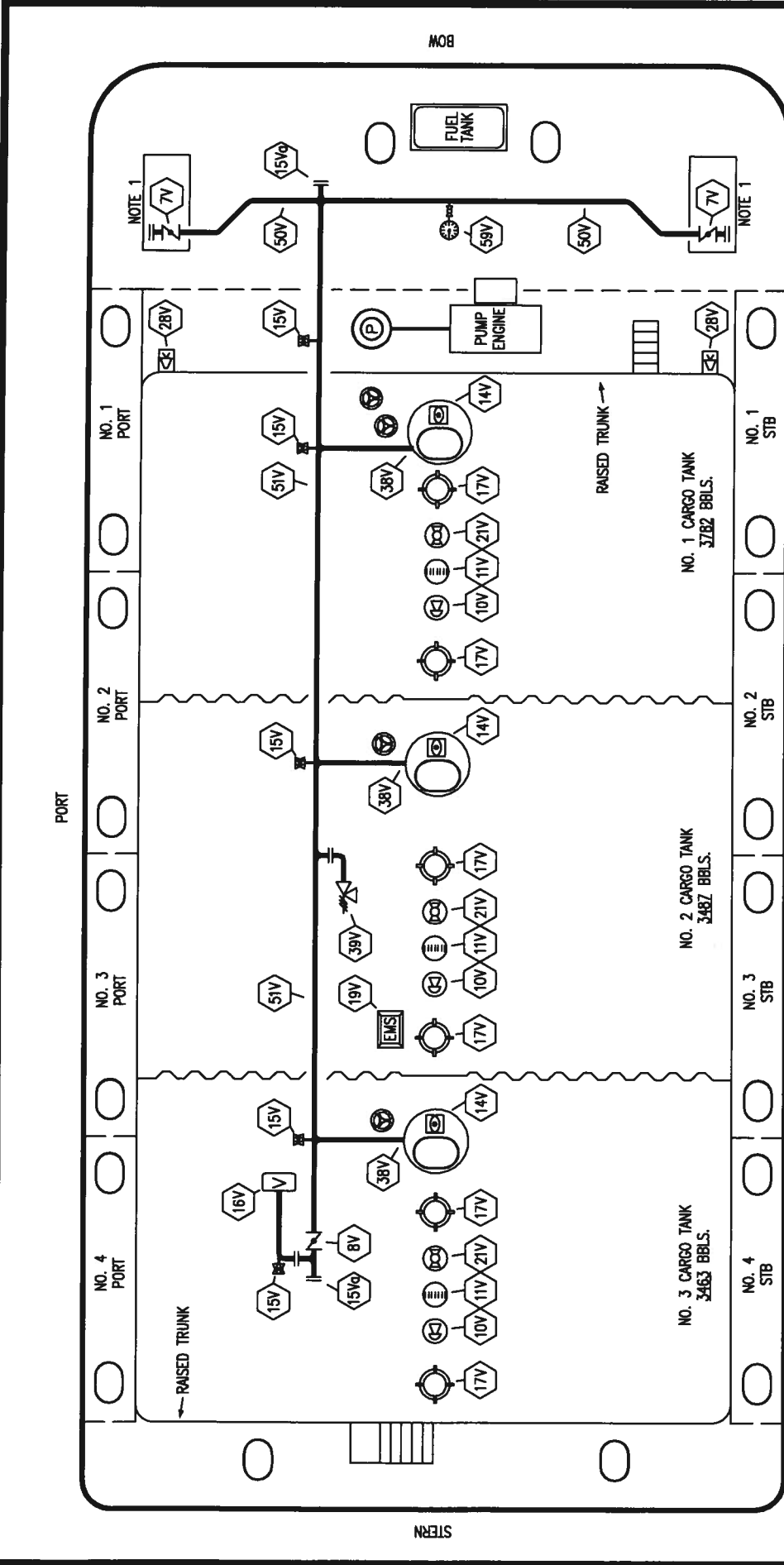
TRINITY MARINE PRODUCTS - BARREL CAPACITY=10732



KIRBY INLAND MARINE

CARGO
PIPING FLOW DIAGRAM

REV.	DATE	BY	CHK APP	REVISION	DESCRIPTION	SCALE:	NONE	PAGE:	1 OF 3	REV.	0
0	12/21/09	RB	RB	RJ	FOR APPROVAL						



NOTE 1: CONTAINMENT P/S

STARBOARD

TRINITY MARINE PRODUCTS -- BARREL CAPACITY=10732



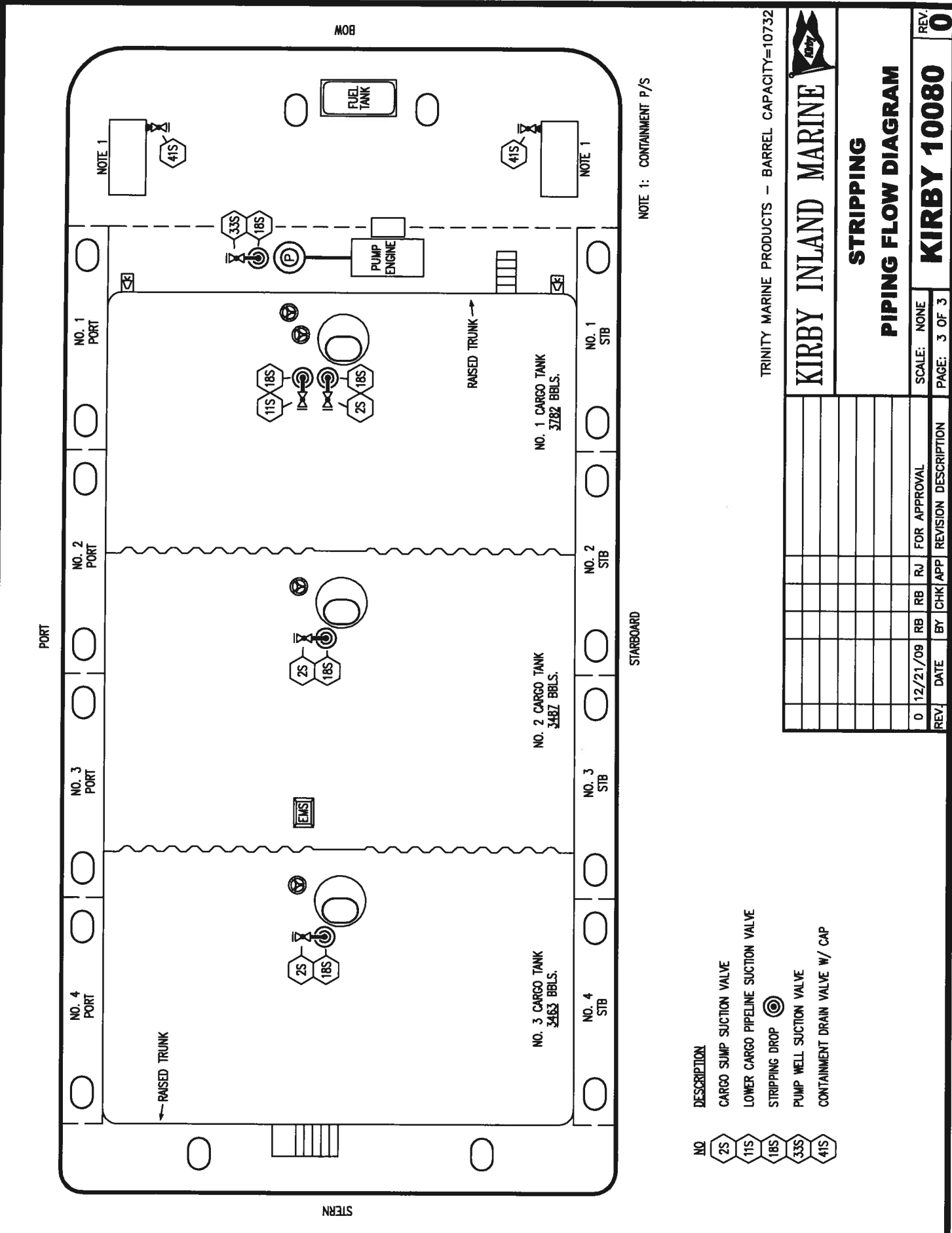
KIRBY INLAND MARINE

VAPOR PIPING FLOW DIAGRAM

- | | | | |
|----------|---------------------------|---------|----------------------------|
| NO. 7V | 8" HEADER VALVE | NO. 19V | EMERGENCY ENGINE SHUT DOWN |
| NO. 8V | 8" VENT STACK VALVE | NO. 21V | HERMETIC GAUGE |
| NO. 10V | HIGH LEVEL/OVERFILL ALARM | NO. 28V | DOCK CONNECTION ALARM |
| NO. 11V | GAUGE STICK | NO. 38V | 6" PRESSURE/VACUUM VALVE |
| NO. 14V | SIGHT GLASS W/GAUGE TREE | NO. 38V | 8" VAPOR PENETRATION |
| NO. 15V | 2" INSPECTION PORT | NO. 50V | 8" VAPOR HEADER |
| NO. 15Vq | 8" INSPECTION PORT | NO. 51V | 8" VAPOR PIPELINE |
| NO. 16V | 8" VAPOR VENT STACK | NO. 59V | PRESS/VAC GAUGE |
| NO. 17V | 20" BUTTERWORTH | | ABOVE DECK PIPING |

REV.	DATE	BY	CHK/APP	REVISION DESCRIPTION
D	12/21/09	RB	RJ	FOR APPROVAL

SCALE: NONE
PAGE: 2 OF 3
KIRBY 10080
REV. **0**



PORT

NO. 4 PORT NO. 3 PORT NO. 2 PORT NO. 1 PORT

NOTE 1

41S

RAISED TRUNK

2S 18S

2S 18S

2S 18S

11S 18S 2S 18S

MOB

FUEL TANK

PUMP ENGINE

RAISED TRUNK

NO. 3 CARGO TANK 3463 BBLs.

NO. 2 CARGO TANK 3487 BBLs.

NO. 1 CARGO TANK 3782 BBLs.

NO. 4 STB

NO. 3 STB

NO. 2 STB

NO. 1 STB

STARBOARD

NOTE 1: CONTAINMENT P/S

- NO 2S
- NO 11S
- NO 18S
- NO 33S
- NO 41S

- DESCRIPTION
- CARGO SUMP SUCTION VALVE
- LOWER CARGO PIPELINE SUCTION VALVE
- STRIPPING DROP
- PUMP WELL SUCTION VALVE
- CONTAINMENT DRAIN VALVE W/ CAP

TRINITY MARINE PRODUCTS - BARREL CAPACITY=10732



**STRIPPING
PIPING FLOW DIAGRAM**

REV.	DATE	BY	CHK/APP	REVISION DESCRIPTION
0	12/21/09	RB	RJ	FOR APPROVAL

SCALE: NONE
PAGE: 3 OF 3
REV. 0

KIRBY 10080