

NOTE 1: CONTAINMENT P/S

STARBOARD

- | | | | |
|-----------|--------------------------|-----------|------------------------------------|
| NO | DESCRIPTION | NO | DESCRIPTION |
| 1C | 8" CARGO TANK VALVE | 12C | 1" BURP VALVE RETURN TO CARGO TANK |
| 2C | 8" LOAD VALVE | 16C | DISCHARGE PRESSURE GAUGE |
| 3C | 10" MASTER SUCTION VALVE | 19C | 8" CARGO HEADER |
| 4C | 8" DISCHARGE VALVE | 24C | 1" PIPE SIGHT GLASS |
| 5C | 8" HEADER VALVE | 30C | 10" CARGO PIPELINE |
| 6C | 8" SALVAGE VALVE | 36C | PRESSURE GAUGE |
| 8C | 6" RELIEF VALVE | 37C | CARGO DROP |
| 9C | 8" CHECK VALVE | --- | ABOVE DECK PIPING |
| 10C | 1" BURP VALVE | --- | BELOW DECK PIPING |
| 11C | 1" BLEED OFF VALVE | | |

TRINITY MARINE PRODUCTS -- BARREL CAPACITY=9991



KIRBY INLAND MARINE

CARGO

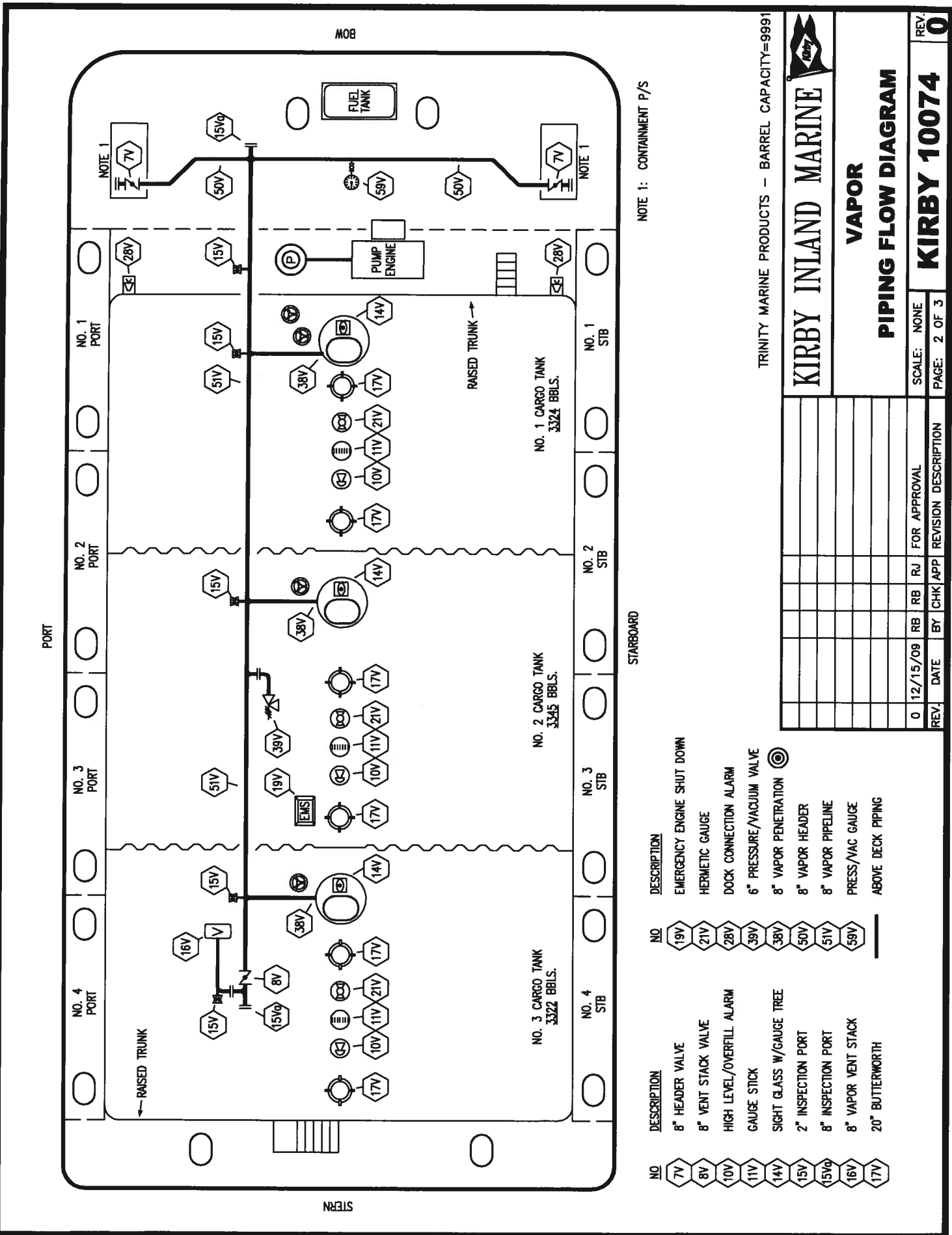
PIPING FLOW DIAGRAM

REV.	DATE	BY	CHK APP	REVISION DESCRIPTION
0	12/15/09	RB	RJ	FOR APPROVAL

SCALE:	NONE
PAGE:	1 OF 3

KIRBY 10074

REV. 0



NOTE 1: CONTAINMENT P/S

STARBOARD

TRINITY MARINE PRODUCTS - BARREL CAPACITY=9991



KIRBY INLAND MARINE

VAPOR

PIPING FLOW DIAGRAM

REV.	DATE	BY	CHK/APP	REVISION	DESCRIPTION
0	12/15/09	RB	RU	FOR APPROVAL	

SCALE: NONE
PAGE: 2 OF 3

KIRBY 10074

REV. **0**

- | | | |
|----------|-------------|----------------------------|
| NO. 7V | DESCRIPTION | 8" HEADER VALVE |
| NO. 8V | DESCRIPTION | 8" VENT STACK VALVE |
| NO. 10V | DESCRIPTION | HIGH LEVEL/OVERFILL ALARM |
| NO. 11V | DESCRIPTION | GAUGE STICK |
| NO. 14V | DESCRIPTION | SIGHT GLASS W/GAUGE TREE |
| NO. 15V | DESCRIPTION | 2" INSPECTION PORT |
| NO. 15Vg | DESCRIPTION | 8" INSPECTION PORT |
| NO. 16V | DESCRIPTION | 8" VAPOR VENT STACK |
| NO. 17V | DESCRIPTION | 20" BUTTERWORTH |
| NO. 19V | DESCRIPTION | EMERGENCY ENGINE SHUT DOWN |
| NO. 21V | DESCRIPTION | HERMETIC GAUGE |
| NO. 28V | DESCRIPTION | DOCK CONNECTION ALARM |
| NO. 39V | DESCRIPTION | 6" PRESSURE/VACUUM VALVE |
| NO. 38V | DESCRIPTION | 8" VAPOR PENETRATION |
| NO. 50V | DESCRIPTION | 8" VAPOR HEADER |
| NO. 51V | DESCRIPTION | 8" VAPOR PIPELINE |
| NO. 59V | DESCRIPTION | PRESS/VAC GAUGE |
| | | ABOVE DECK PIPING |

