

PORT

NO. 1 PORT

NO. 2 PORT

NO. 3 PORT

NO. 4 PORT

RAISED TRUNK →

NO. 1 CARGO TANK
3782 BBLs.

NO. 2 CARGO TANK
3487 BBLs.

NO. 3 CARGO TANK
3463 BBLs.

← RAISED TRUNK

STERN


BOW

STARBOARD

NO.	DESCRIPTION	NO.	DESCRIPTION
1C	8" CARGO TANK VALVE	12C	1" BURP VALVE RETURN TO CARGO TANK
2C	8" LOAD VALVE	16C	DISCHARGE PRESSURE GAUGE
3C	10" MASTER SUCTION VALVE	19C	8" CARGO HEADER
4C	8" DISCHARGE VALVE	24C	1" PIPE SIGHT GLASS
5C	8" HEADER VALVE	30C	10" CARGO PIPELINE
6C	8" SALVAGE VALVE	36C	PRESSURE GAUGE
8C	6" RELIEF VALVE	37C	CARGO DROP
9C	8" CHECK VALVE	---	ABOVE DECK PIPING
10C	1" BURP VALVE	---	BELOW DECK PIPING
11C	1" BLEED OFF VALVE		

NOTE 1: CONTAINMENT P/S

TRINITY MARINE



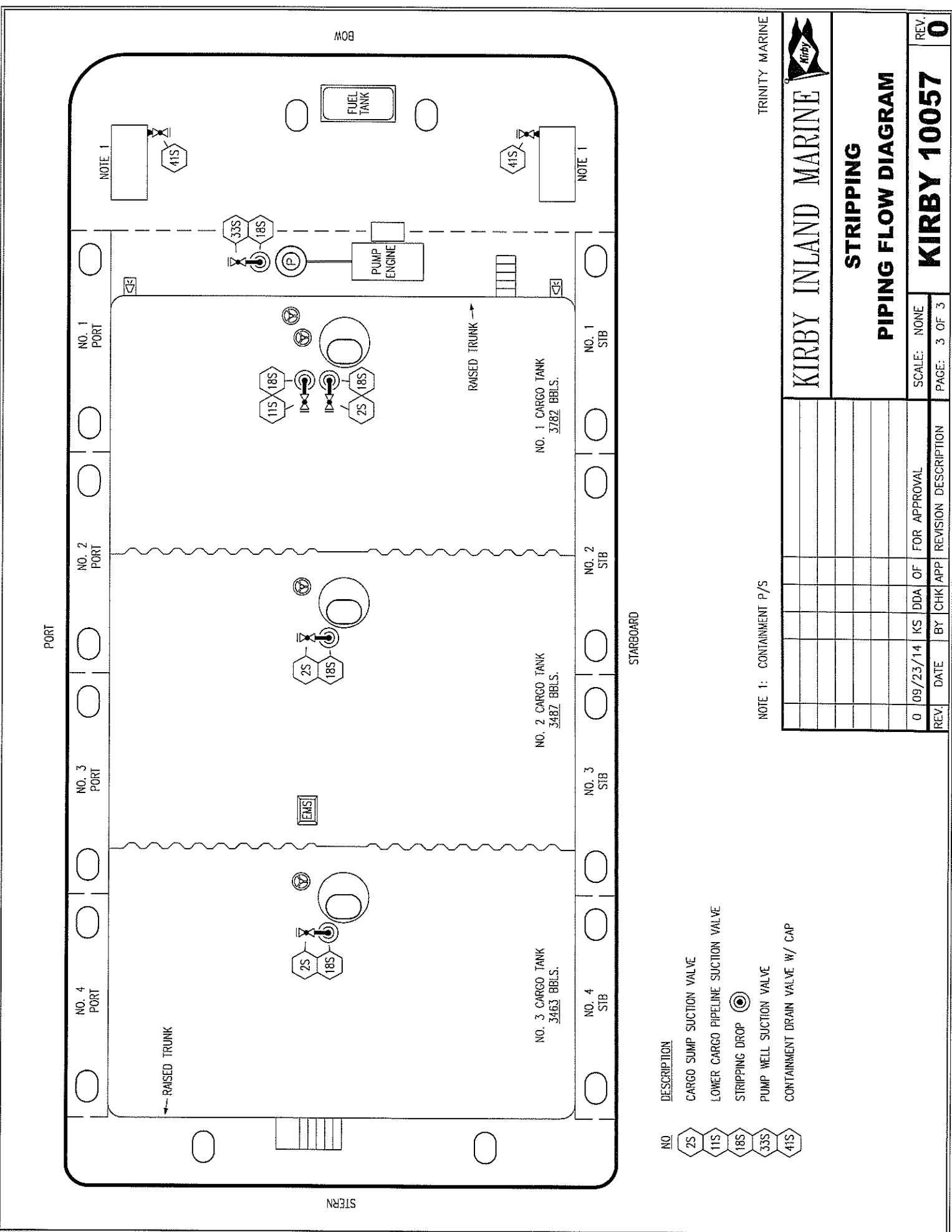
KIRBY INLAND MARINE

CARGO

PIPING FLOW DIAGRAM

REV.	DATE	BY	CHK	APP	REVISION DESCRIPTION
0	09/23/14	KS	DDA	OF	FOR APPROVAL

SCALE: NONE	REV. 0
PAGE: 1 OF 3	



TRINITY MARINE



KIRBY INLAND MARINE

STRIPPING

PIPING FLOW DIAGRAM

REV.	DATE	BY	CHK	APP	FOR APPROVAL	REVISION DESCRIPTION
0	09/23/14	KS	DDA	OF	FOR APPROVAL	

SCALE: NONE
PAGE: 3 OF 3

REV. **0**

- NO. 2S 11S 18S 33S 41S
- DESCRIPTION
 - CARGO SUMP SUCTION VALVE
 - LOWER CARGO PIPELINE SUCTION VALVE
 - STRIPPING DROP
 - PUMP WELL SUCTION VALVE
 - CONTAINMENT DRAIN VALVE W/ CAP

NOTE 1: CONTAINMENT P/S

PORT

STARBOARD

BOW

STERN

NO. 4 PORT NO. 3 PORT NO. 2 PORT NO. 1 PORT

NO. 4 STB NO. 3 STB NO. 2 STB NO. 1 STB

