

JEFFBOAT - EX: HW 1068



KIRBY INLAND MARINE

CARGO

PIPING FLOW DIAGRAM

REV. **0**

KIRBY 10043

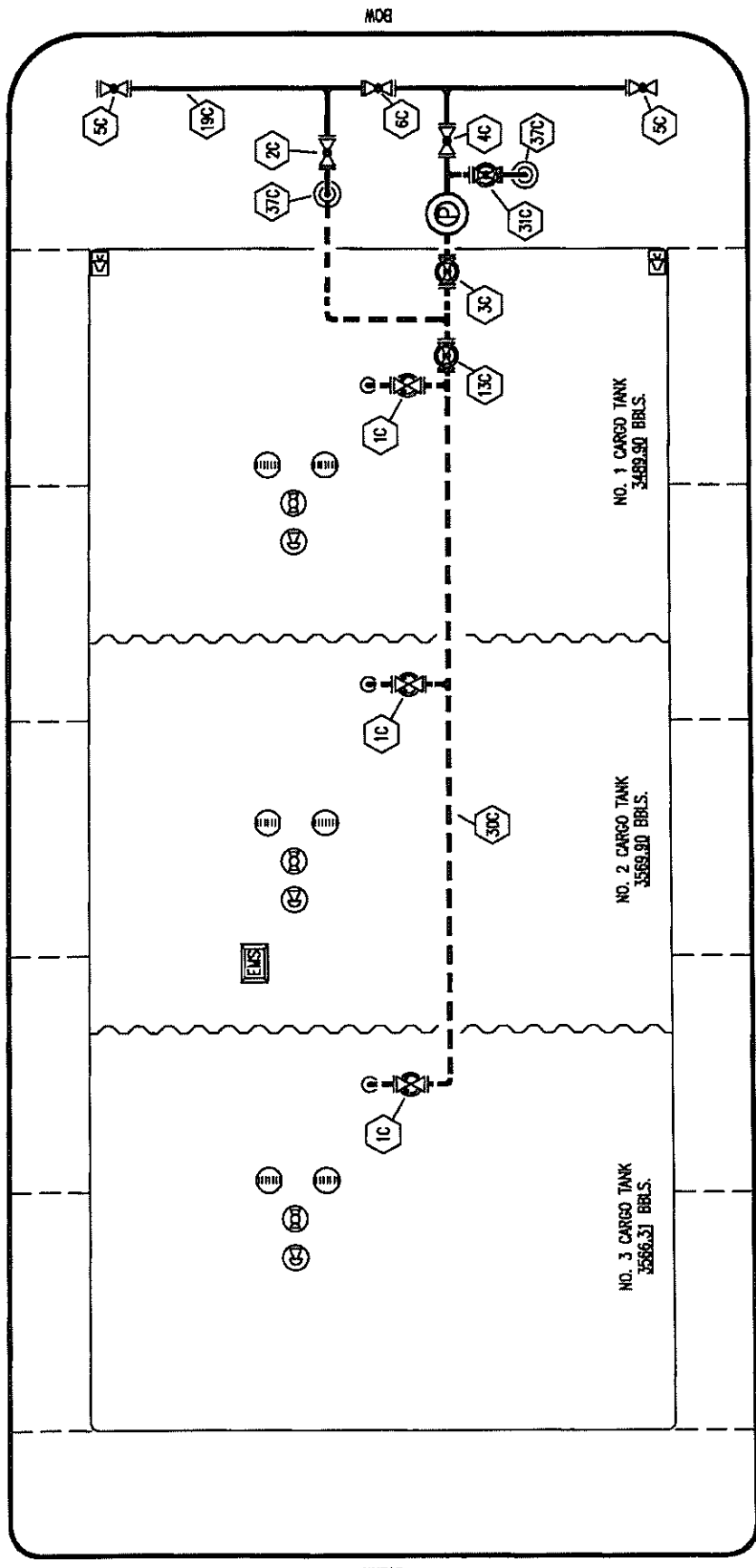
SCALE: NONE
PAGE: 1 OF 4

REV.	DATE	BY	CHK/APP	LT	RB	OF	APPROVED	REVISION DESCRIPTION
0	01/26/09							

PORT

STERN

STARBOARD



- NO. SIZE DESCRIPTION**
- 1C CARGO TANK VALVE
 - 2C LOAD VALVE
 - 3C MASTER SUCTION VALVE
 - 4C DISCHARGE VALVE
 - 5C HEADER VALVE
 - 6C SALVAGE VALVE
 - 13C CARGO PIPING BLOCK VALVE
 - 19C CARGO HEADER
 - 30C CARGO PIPELINE
 - 31C BYPASS VALVE
 - 37C CARGO DROP
- ABOVE DECK PIPING
- - - BELOW DECK PIPING

NO. 1 CARGO TANK
3489.80 BBLs.

NO. 2 CARGO TANK
3589.80 BBLs.

NO. 3 CARGO TANK
3586.31 BBLs.

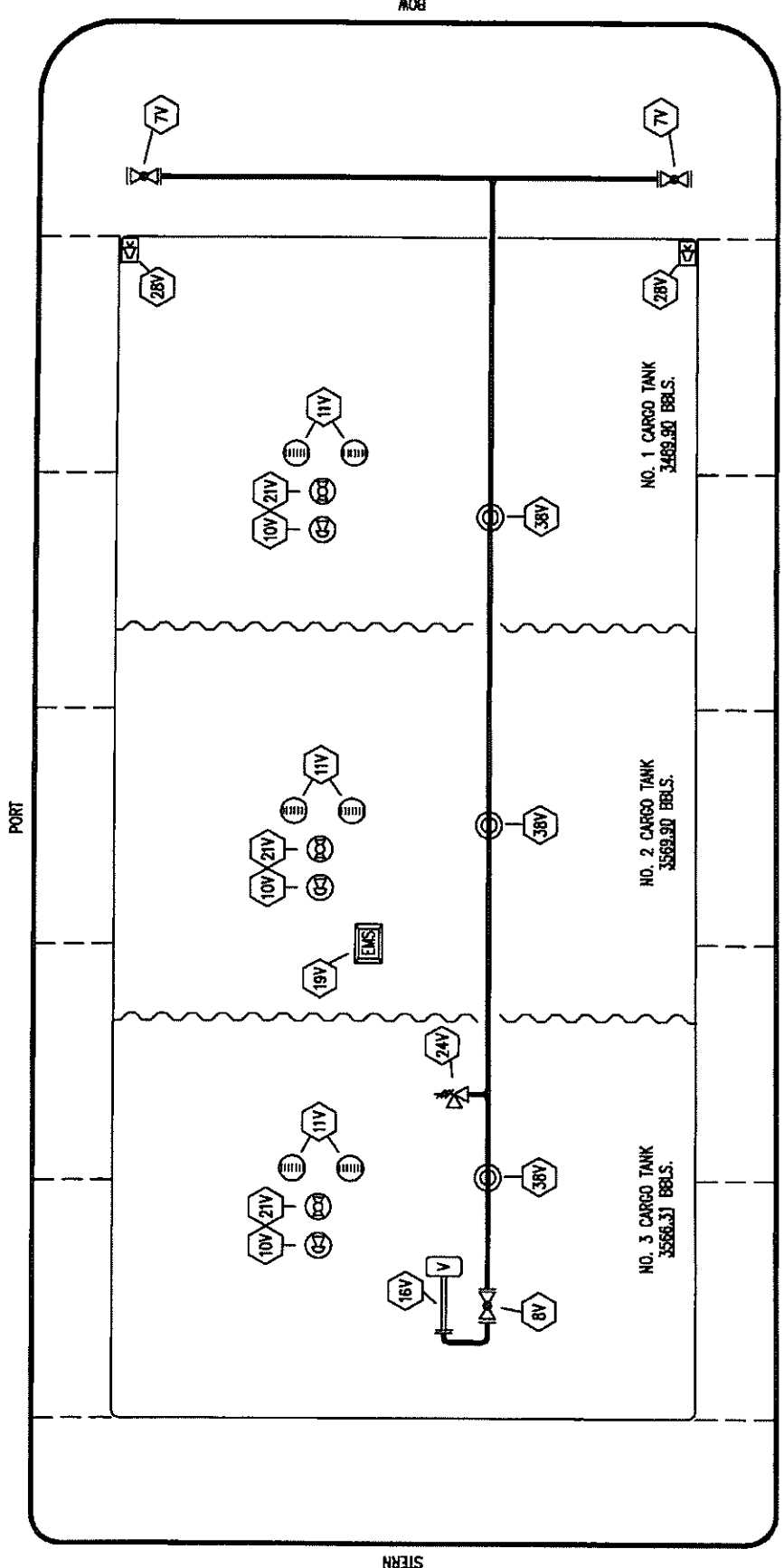
JEFFBOAT - EX: HW 1068



KIRBY INLAND MARINE

**VAPOR
PIPING FLOW DIAGRAM**

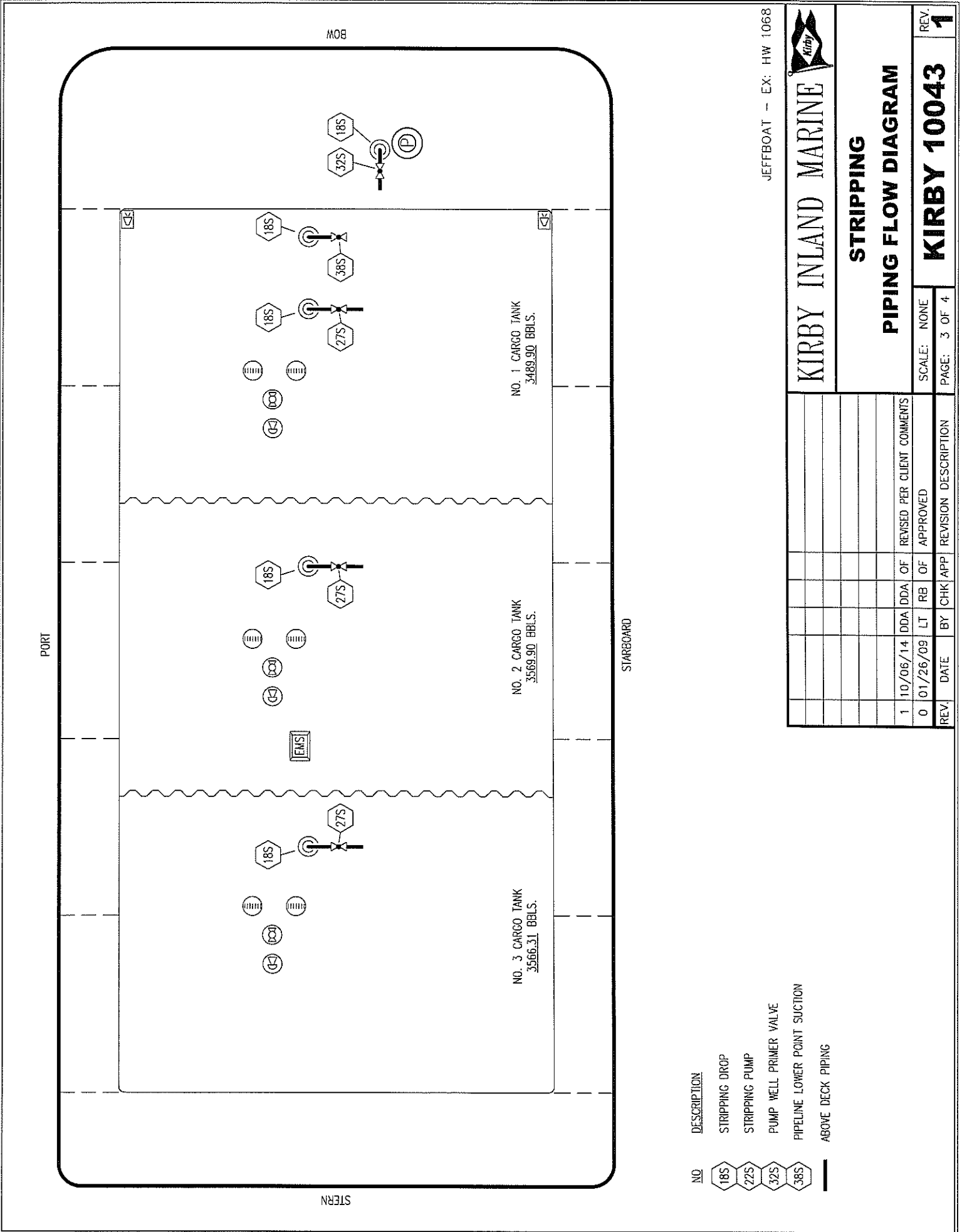
REV	0	SCALE: NONE
REV	0	PAGE: 2 OF 4
REV	0	DATE
REV	0	BY
REV	0	CHK APP
REV	0	REVISION
REV	0	DESCRIPTION
REV	0	APPROVED
REV	0	LT
REV	0	RB OF



NO	SIZE	DESCRIPTION
7V	8"	HEADER VALVE
8V	8"	VENT STACK VALVE
10V	8"	HIGH LEVEL/OVERFILL ALARM
11V	8"	METER STICK GAUGE
16V	8"	VENT STACK
19V	2"	EMERGENCY ENGINE SHUT DOWN
21V	2"	HERMETIC GAUGE
24V		PRESSURE RELIEF VALVE
28V		HIGH LEVEL/OVERFILL ALARM DOCK CONN
38V		VAPOR DROP
		ABOVE DECK PIPING

REV 0

KIRBY 10043



- NO. DESCRIPTION
- 18S STRIPPING DROP
- 22S STRIPPING PUMP
- 32S PUMP WELL PRIMER VALVE
- 38S PIPELINE LOWER POINT SUCTION
- ABOVE DECK PIPING

REV.	DATE	BY	CHK	APP	REVISION DESCRIPTION
1	10/06/14	DDA	DDA	OF	REVISED PER CLIENT COMMENTS
0	01/26/09	LT	RB	OF	APPROVED

JEFFBOAT - EX: HW 1068

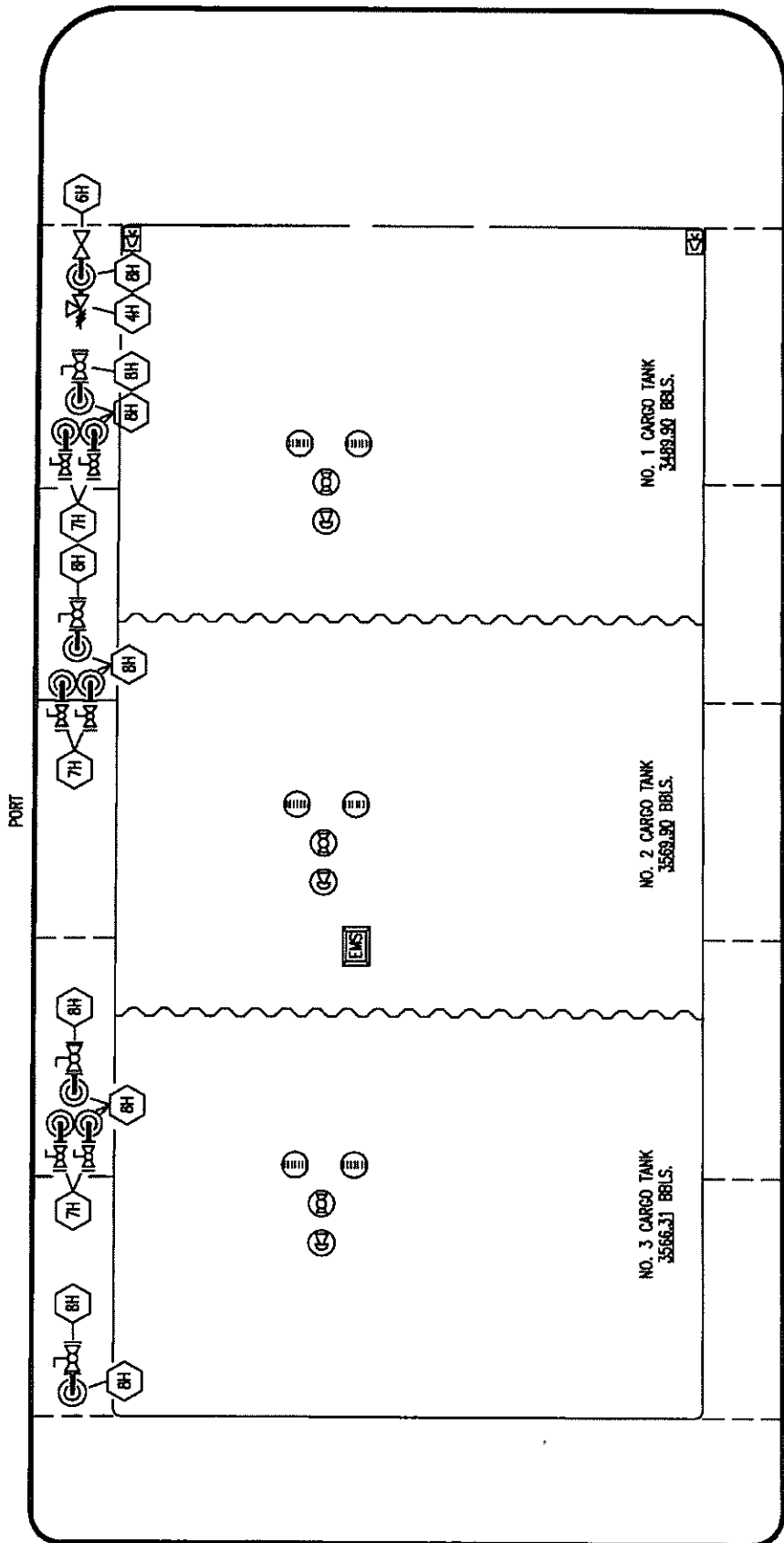


KIRBY INLAND MARINE

STEAM

PIPING FLOW DIAGRAM

REV.	0	SCALE:	NONE
REV.	0	PAGE:	4 OF 4



- NO. SIZE DESCRIPTION
- 4H RELIEF VALVE
- 6H HEADER VALVE
- 7H CONDENSATE OUTLET
- 8H CARGO TANK INLET
- 8H STEAM DROP
- ABOVE DECK PIPING

REV.	DATE	BY	CHK/APP	LT	RB	OF	APPROVED	REVISION DESCRIPTION
0	01/26/09							