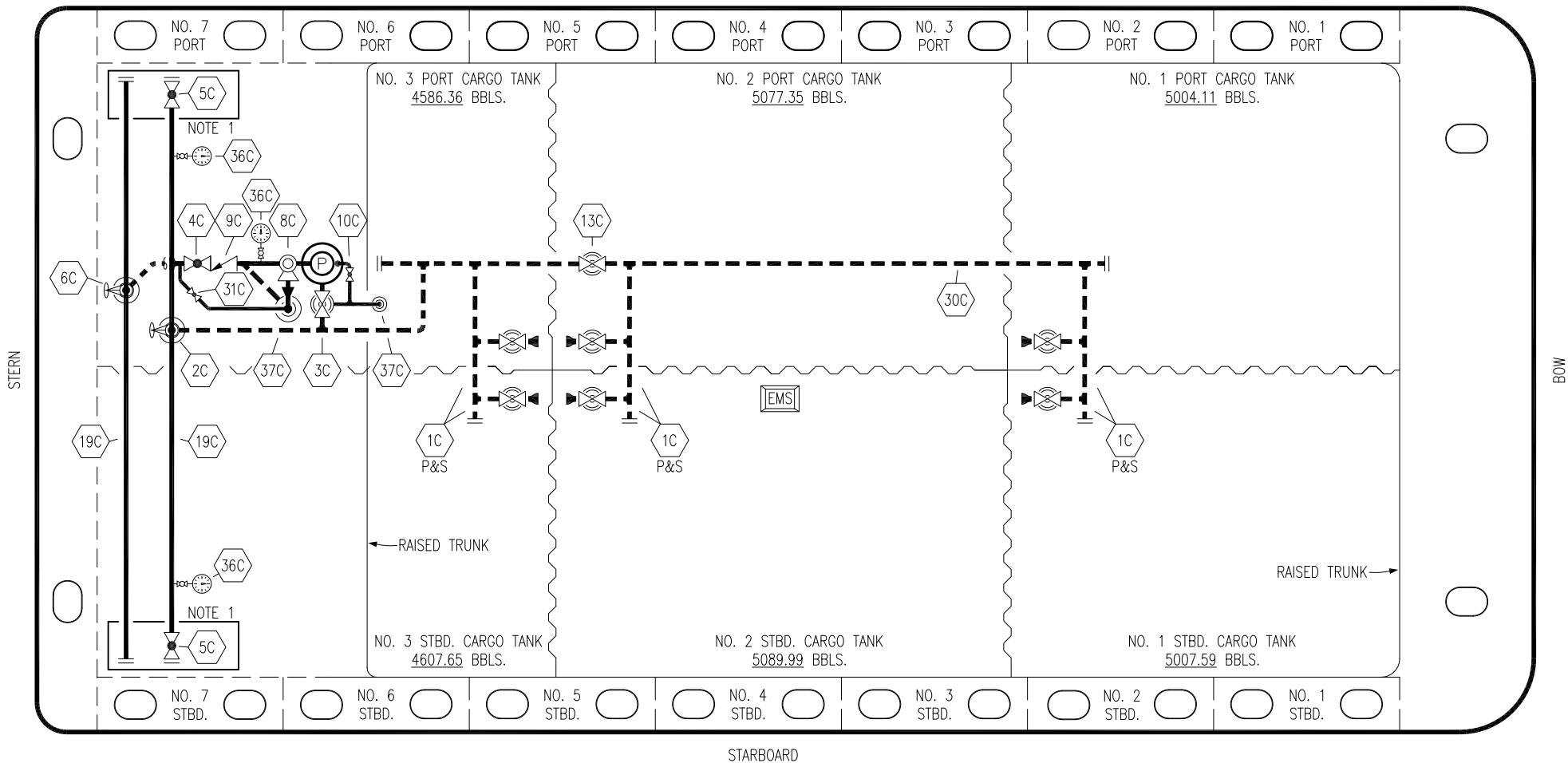





PORT




| | | | |
|-----|----------------------|---|--|
| NO | DESCRIPTION | NO | DESCRIPTION |
| 1C | CARGO TANK VALVE | 13C | CARGO PIPING BLOCK VALVE |
| 2C | LOAD VALVE | 19C | CARGO HEADER |
| 3C | MASTER SUCTION VALVE | 30C | CARGO PIPELINE |
| 4C | DISCHARGE VALVE | 31C | BYPASS VALVE |
| 5C | HEADER VALVE | 36C | PRESSURE GAUGE |
| 6C | SALVAGE VALVE | 37C | CARGO DROP  |
| 8C | RELIEF VALVE |  | ABOVE DECK PIPING |
| 9C | CHECK VALVE |  | BELOW DECK PIPING |
| 10C | BURP VALVE | | |

NOTE 1: CONTAINMENT P/S

TRINITY

| | | | | | |
|------|----------|-----|-----|-----|----------------------|
| 0 | 05/05/21 | MRV | DDA | CW | ISSUED FOR APPROVAL |
| REV. | DATE | BY | CHK | APP | REVISION DESCRIPTION |

KIRBY INLAND MARINE 

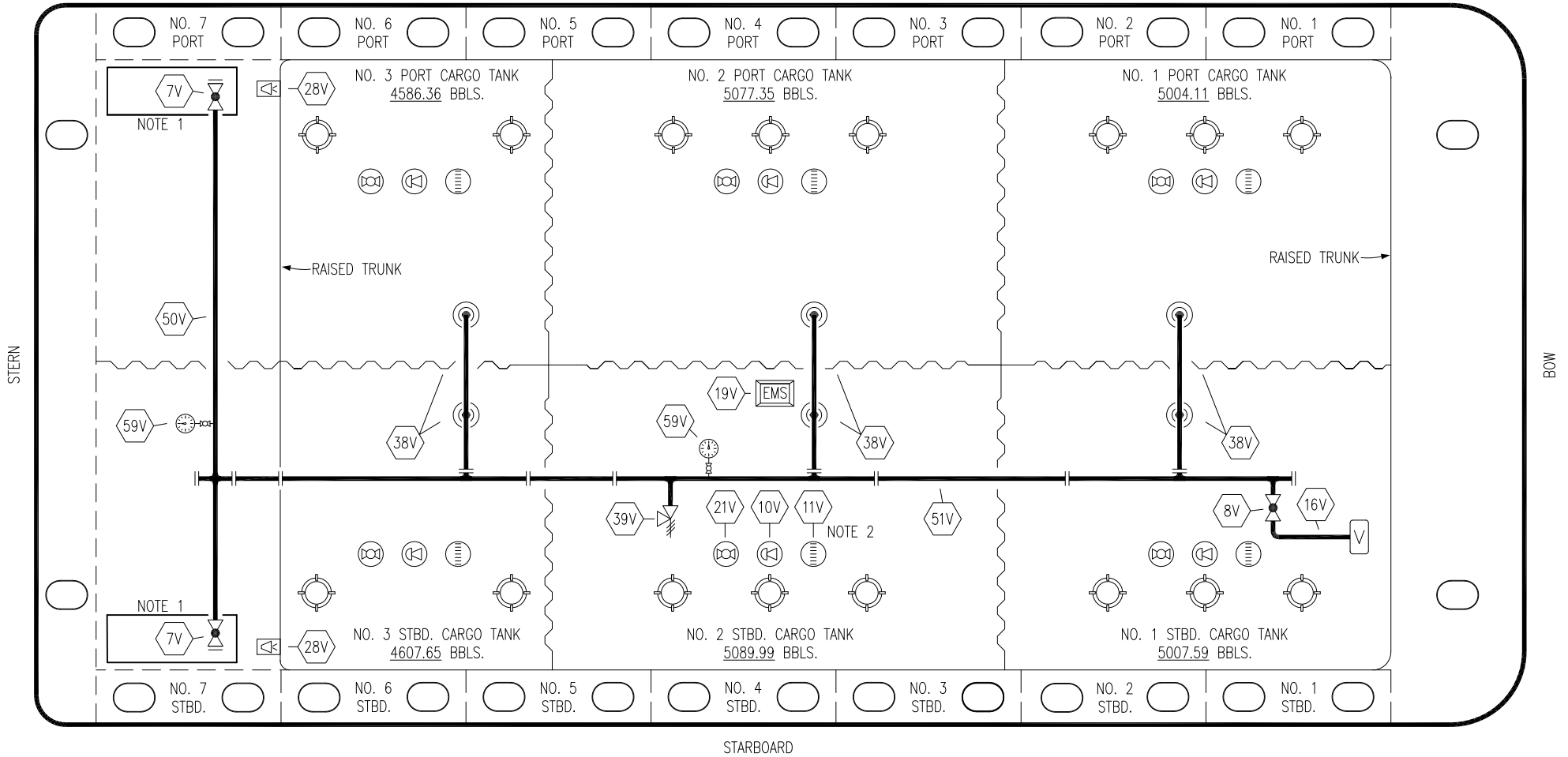
CARGO
PIPING FLOW DIAGRAM

HTCO 3151

REV. 0

SCALE: NONE
PAGE: 1 OF 3

PORT



STARBOARD

- | | | | |
|-----|----------------------------|-----|-----------------------|
| NO | DESCRIPTION | NO | DESCRIPTION |
| 7V | HEADER VALVE | 38V | VAPOR PENETRATION |
| 8V | VENT STACK VALVE | 39V | PRESSURE/VACUUM VALVE |
| 10V | HIGH LEVEL/OVERFILL ALARM | 50V | VAPOR HEADER |
| 11V | 1-METER GAUGE STICK | 51V | VAPOR PIPELINE |
| 16V | VAPOR VENT STACK | 59V | PRESS/VAC GAUGE |
| 19V | EMERGENCY ENGINE SHUT DOWN | | ABOVE DECK PIPING |
| 21V | HERMETIC GAUGE | | |
| 28V | DOCK CONNECTION ALARM | | |

NOTE 2: TYPICAL RIGGING IN EACH TANK
 NOTE 1: CONTAINMENT P/S

TRINITY

KIRBY INLAND MARINE

**VAPOR
PIPING FLOW DIAGRAM**

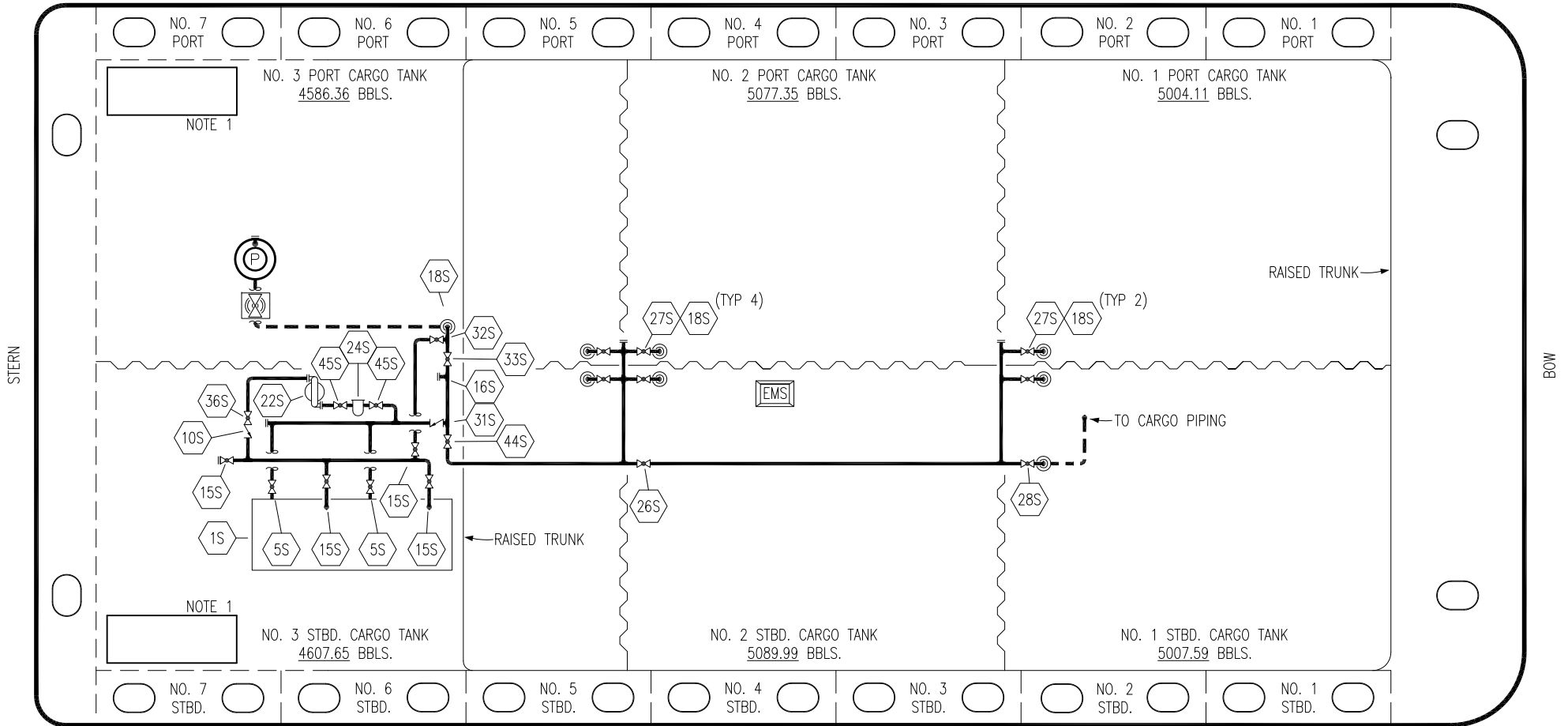
| | | | | | |
|------|----------|-----|-----|-----|----------------------|
| 0 | 05/05/21 | MRV | DDA | CW | ISSUED FOR APPROVAL |
| REV. | DATE | BY | CHK | APP | REVISION DESCRIPTION |

SCALE: NONE
 PAGE: 2 OF 3


HTCO 3151

REV. **0**

PORT



STARBOARD

| NO | DESCRIPTION | NO | DESCRIPTION |
|-----|--|-----|------------------------------|
| 1S | SLOP TANK | 28S | CARGO PIPING SUCTION |
| 5S | SLOP TANK SUCTION VALVE | 31S | CHECK VALVE |
| 9S | BURP VALVE | 32S | PUMP WELL PRIMER VALVE |
| 10S | STRIPPING PUMP CHECK VALVE | 33S | PUMP WELL SUCTION |
| 15S | DISCHARGE VALVE | 36S | STRIPPING PUMP DISCHARGE |
| 16S | REMOTE SUCTION CONNECTION | 44S | STRIPPING PUMP SUCTION |
| 18S | TYP. STRIPPING PENETRATION  | 45S | STRIPPING PUMP SUCTION VALVE |
| 22S | STRIPPING PUMP | — | — ABOVE DECK PIPING |
| 24S | BASKET STRAINER | --- | --- BELOW DECK PIPING |
| 26S | STRIPPING HEADER BLOCK VALVE | | |
| 27S | SUMP SUCTION VALVE | | |

NOTE 1: CONTAINMENT P/S

| 0 | 05/05/21 | MRV | DDA | CW | ISSUED FOR APPROVAL |
|------|----------|-----|-----|-----|----------------------|
| REV. | DATE | BY | CHK | APP | REVISION DESCRIPTION |

TRINITY

KIRBY INLAND MARINE 

**STRIPPING
PIPING FLOW DIAGRAM**

HTCO 3151

| | |
|--------------|--------|
| SCALE: NONE | REV. 0 |
| PAGE: 3 OF 3 | |