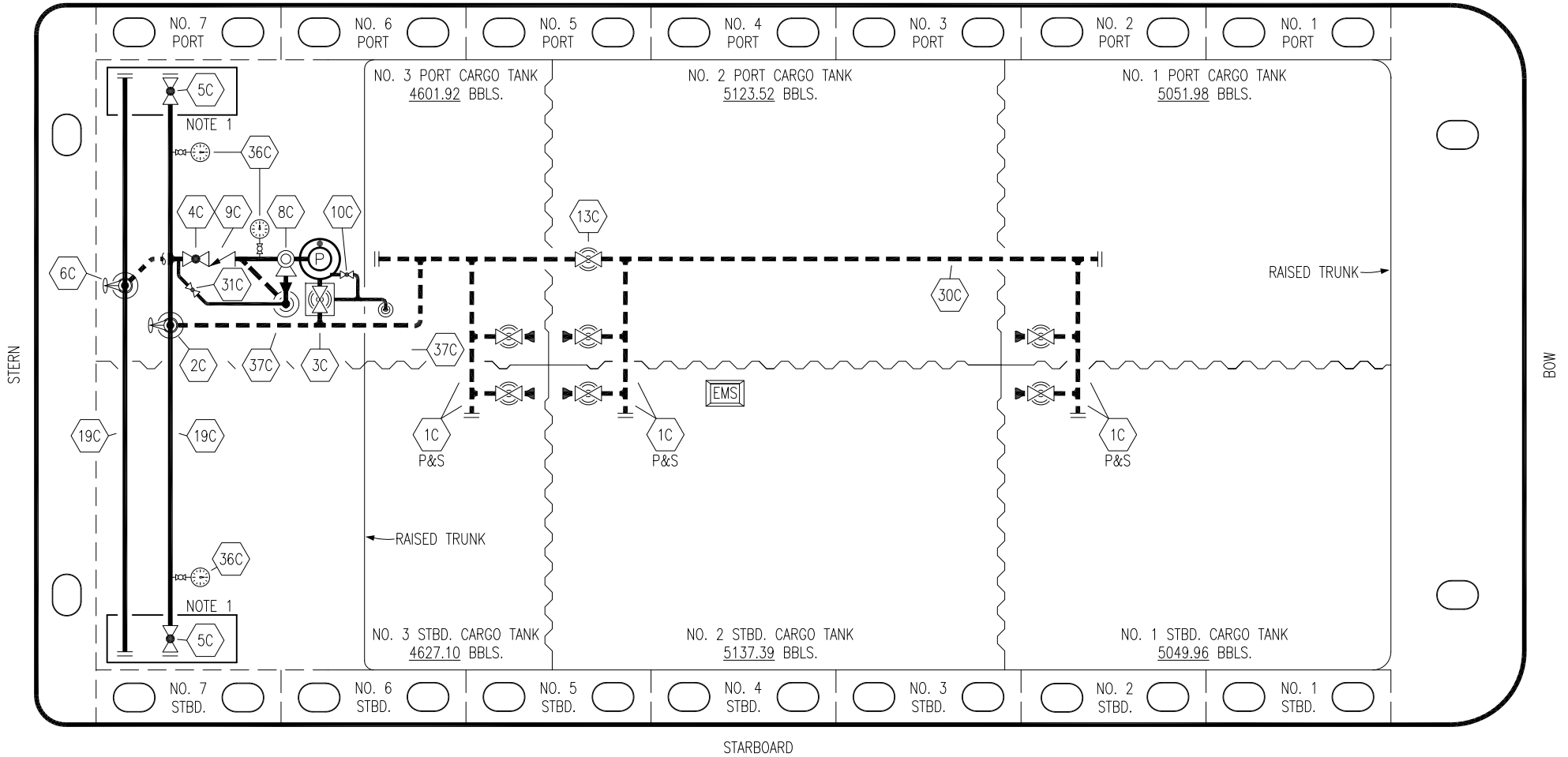


PORT



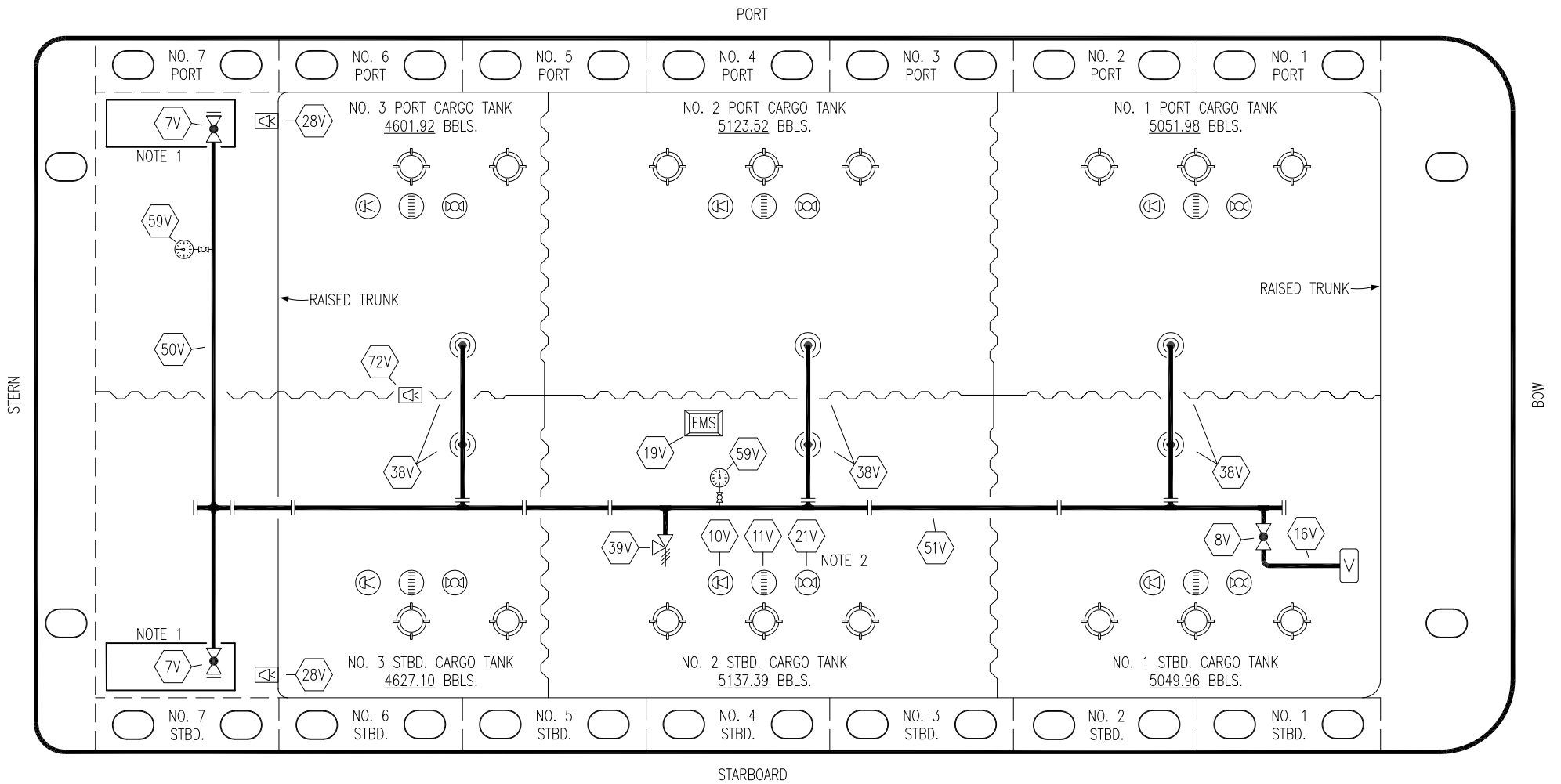
STARBOARD

- | | | | |
|-----|---------------------------------|-----|--------------------------|
| NO | DESCRIPTION | NO | DESCRIPTION |
| 1C | CARGO TANK VALVE | 13C | CARGO PIPING BLOCK VALVE |
| 2C | LOAD VALVE | 19C | CARGO HEADER |
| 3C | MASTER SUCTION VALVE | 30C | CARGO PIPELINE |
| 4C | DISCHARGE VALVE | 31C | BYPASS VALVE |
| 5C | HEADER VALVE | 36C | PRESSURE GAUGE |
| 6C | SALVAGE VALVE | 37C | CARGO DROP |
| 8C | RELIEF VALVE | — | — ABOVE DECK PIPING |
| 9C | CHECK VALVE | --- | --- BELOW DECK PIPING |
| 10C | BURP VALVE | | |
| 12C | BURP VALVE RETURN TO CARGO TANK | | |

NOTE 1: CONTAINMENT P/S

0	09/29/20	MRV	DDA	CW	ISSUED FOR APPROVAL
REV.	DATE	BY	CHK	APP	REVISION DESCRIPTION

CARGO PIPING FLOW DIAGRAM	
SCALE: NONE	HTCO 3149
PAGE: 1 OF 3	
	REV. 0



- | | | | |
|-----|----------------------------|-----|-----------------------|
| NO | DESCRIPTION | NO | DESCRIPTION |
| 7V | HEADER VALVE | 38V | VAPOR PENETRATION |
| 8V | VENT STACK VALVE | 39V | PRESSURE/VACUUM VALVE |
| 10V | HIGH LEVEL/OVERFILL ALARM | 50V | VAPOR HEADER |
| 11V | 1-METER GAUGE STICK | 51V | VAPOR PIPELINE |
| 16V | VAPOR VENT STACK | 59V | PRESS/VAC GAUGE |
| 19V | EMERGENCY ENGINE SHUT DOWN | 72V | SOLAR ALARM PANEL |
| 21V | 2" HERMETIC GAUGE | | ABOVE DECK PIPING |
| 28V | DOCK CONNECTION ALARM | | |

NOTE 2: TYPICAL RIGGING IN EACH TANK

NOTE 1: CONTAINMENT P/S

0	09/29/20	MRV	DDA	CW	ISSUED FOR APPROVAL
REV.	DATE	BY	CHK	APP	REVISION DESCRIPTION

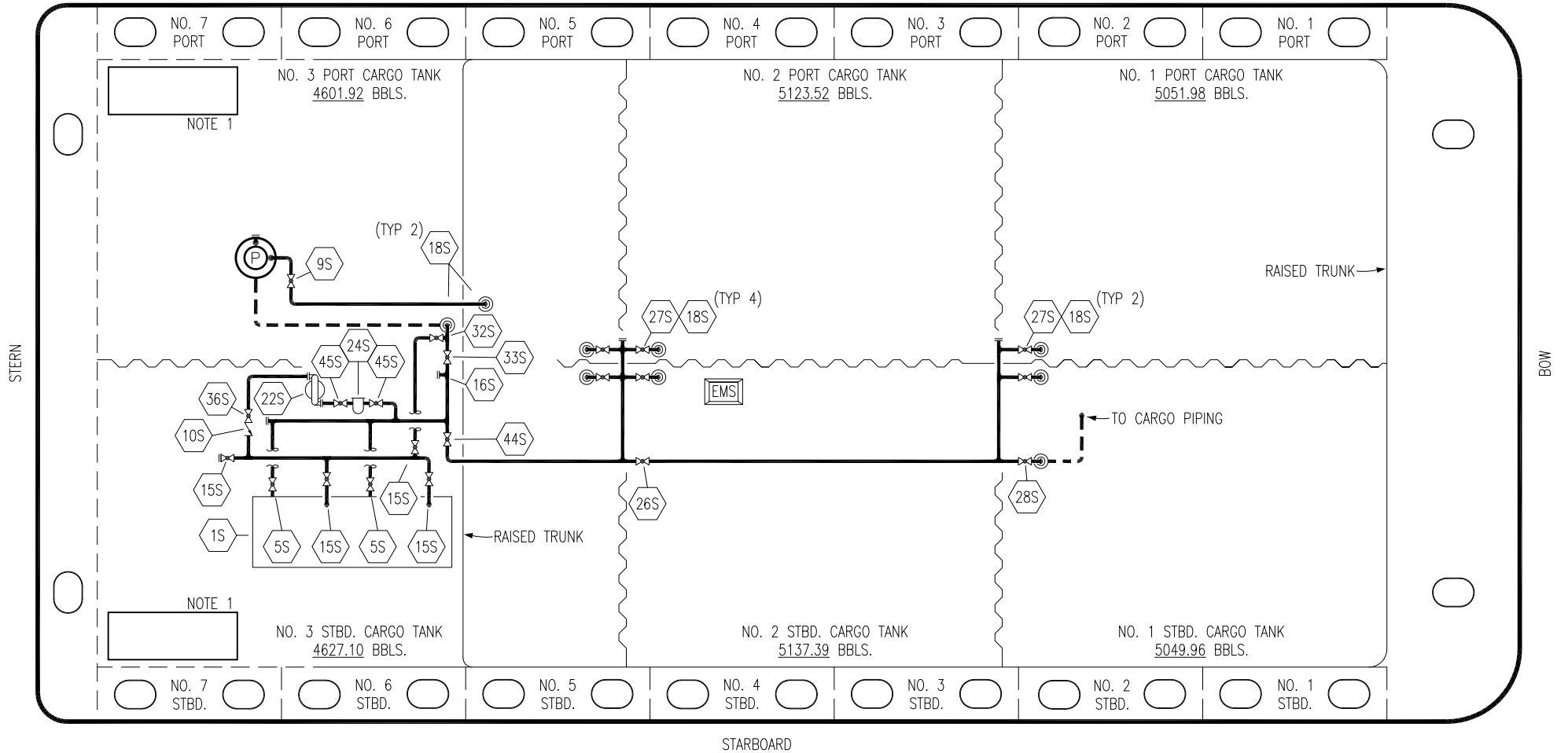
KIRBY INLAND MARINE

**VAPOR
PIPING FLOW DIAGRAM**

HTCO 3149

SCALE: NONE	REV. 0
PAGE: 2 OF 3	

PORT



NO	DESCRIPTION	NO	DESCRIPTION
1S	SLOP TANK	26S	STRIPPING HEADER BLOCK VALVE
5S	SLOP TANK SUCTION VALVE	27S	SUMP SUCTION VALVE
9S	BURP VALVE	28S	CARGO PIPING SUCTION
10S	STRIPPING PUMP CHECK VALVE	32S	PUMP WELL PRIMER VALVE
15S	DISCHARGE VALVE	33S	PUMP WELL SUCTION
16S	REMOTE SUCTION CONNECTION	36S	STRIPPING PUMP DISCHARGE
18S	TYP. STRIPPING PENETRATION	44S	STRIPPING PUMP SUCTION
22S	STRIPPING PUMP	45S	STRIPPING PUMP SUCTION VALVE
24S	BASKET STRAINER	—	— ABOVE DECK PIPING
		---	BELOW DECK PIPING

NOTE 1: CONTAINMENT P/S

REV.	DATE	BY	CHK	APP	REVISION DESCRIPTION
0	09/29/20	MRV	DDA	CW	ISSUED FOR APPROVAL

KIRBY INLAND MARINE

**STRIPPING
PIPING FLOW DIAGRAM**

HTCO 3149

SCALE: NONE	REV. 0
PAGE: 3 OF 3	