

- | | | | | | | | | | | | | | | | | | | | | | | | | | | | | | | | | | | | | | |
|---|--------------------------|-------------|----|------------------|----|------------|----|----------------------|----|-----------------|----|--------------|----|---------------|----|--------------|----|-------------|---|----|-------------|-----|--------------------------|-----|--------------|-----|----------------|-----|--------------|-----|----------------|-----|------------|--|-------------------|--|-------------------|
| <table style="width: 100%; border: none;"> <tr><td>NO</td><td>DESCRIPTION</td></tr> <tr><td>1C</td><td>CARGO TANK VALVE</td></tr> <tr><td>2C</td><td>LOAD VALVE</td></tr> <tr><td>3C</td><td>MASTER SUCTION VALVE</td></tr> <tr><td>4C</td><td>DISCHARGE VALVE</td></tr> <tr><td>5C</td><td>HEADER VALVE</td></tr> <tr><td>6C</td><td>SALVAGE VALVE</td></tr> <tr><td>8C</td><td>RELIEF VALVE</td></tr> <tr><td>9C</td><td>CHECK VALVE</td></tr> </table> | NO | DESCRIPTION | 1C | CARGO TANK VALVE | 2C | LOAD VALVE | 3C | MASTER SUCTION VALVE | 4C | DISCHARGE VALVE | 5C | HEADER VALVE | 6C | SALVAGE VALVE | 8C | RELIEF VALVE | 9C | CHECK VALVE | <table style="width: 100%; border: none;"> <tr><td>NO</td><td>DESCRIPTION</td></tr> <tr><td>13C</td><td>CARGO PIPING BLOCK VALVE</td></tr> <tr><td>19C</td><td>CARGO HEADER</td></tr> <tr><td>30C</td><td>CARGO PIPELINE</td></tr> <tr><td>31C</td><td>BYPASS VALVE</td></tr> <tr><td>36C</td><td>PRESSURE GAUGE</td></tr> <tr><td>37C</td><td>CARGO DROP </td></tr> <tr><td></td><td>ABOVE DECK PIPING</td></tr> <tr><td></td><td>BELOW DECK PIPING</td></tr> </table> | NO | DESCRIPTION | 13C | CARGO PIPING BLOCK VALVE | 19C | CARGO HEADER | 30C | CARGO PIPELINE | 31C | BYPASS VALVE | 36C | PRESSURE GAUGE | 37C | CARGO DROP | | ABOVE DECK PIPING | | BELOW DECK PIPING |
| NO | DESCRIPTION | | | | | | | | | | | | | | | | | | | | | | | | | | | | | | | | | | | | |
| 1C | CARGO TANK VALVE | | | | | | | | | | | | | | | | | | | | | | | | | | | | | | | | | | | | |
| 2C | LOAD VALVE | | | | | | | | | | | | | | | | | | | | | | | | | | | | | | | | | | | | |
| 3C | MASTER SUCTION VALVE | | | | | | | | | | | | | | | | | | | | | | | | | | | | | | | | | | | | |
| 4C | DISCHARGE VALVE | | | | | | | | | | | | | | | | | | | | | | | | | | | | | | | | | | | | |
| 5C | HEADER VALVE | | | | | | | | | | | | | | | | | | | | | | | | | | | | | | | | | | | | |
| 6C | SALVAGE VALVE | | | | | | | | | | | | | | | | | | | | | | | | | | | | | | | | | | | | |
| 8C | RELIEF VALVE | | | | | | | | | | | | | | | | | | | | | | | | | | | | | | | | | | | | |
| 9C | CHECK VALVE | | | | | | | | | | | | | | | | | | | | | | | | | | | | | | | | | | | | |
| NO | DESCRIPTION | | | | | | | | | | | | | | | | | | | | | | | | | | | | | | | | | | | | |
| 13C | CARGO PIPING BLOCK VALVE | | | | | | | | | | | | | | | | | | | | | | | | | | | | | | | | | | | | |
| 19C | CARGO HEADER | | | | | | | | | | | | | | | | | | | | | | | | | | | | | | | | | | | | |
| 30C | CARGO PIPELINE | | | | | | | | | | | | | | | | | | | | | | | | | | | | | | | | | | | | |
| 31C | BYPASS VALVE | | | | | | | | | | | | | | | | | | | | | | | | | | | | | | | | | | | | |
| 36C | PRESSURE GAUGE | | | | | | | | | | | | | | | | | | | | | | | | | | | | | | | | | | | | |
| 37C | CARGO DROP | | | | | | | | | | | | | | | | | | | | | | | | | | | | | | | | | | | | |
| | ABOVE DECK PIPING | | | | | | | | | | | | | | | | | | | | | | | | | | | | | | | | | | | | |
| | BELOW DECK PIPING | | | | | | | | | | | | | | | | | | | | | | | | | | | | | | | | | | | | |

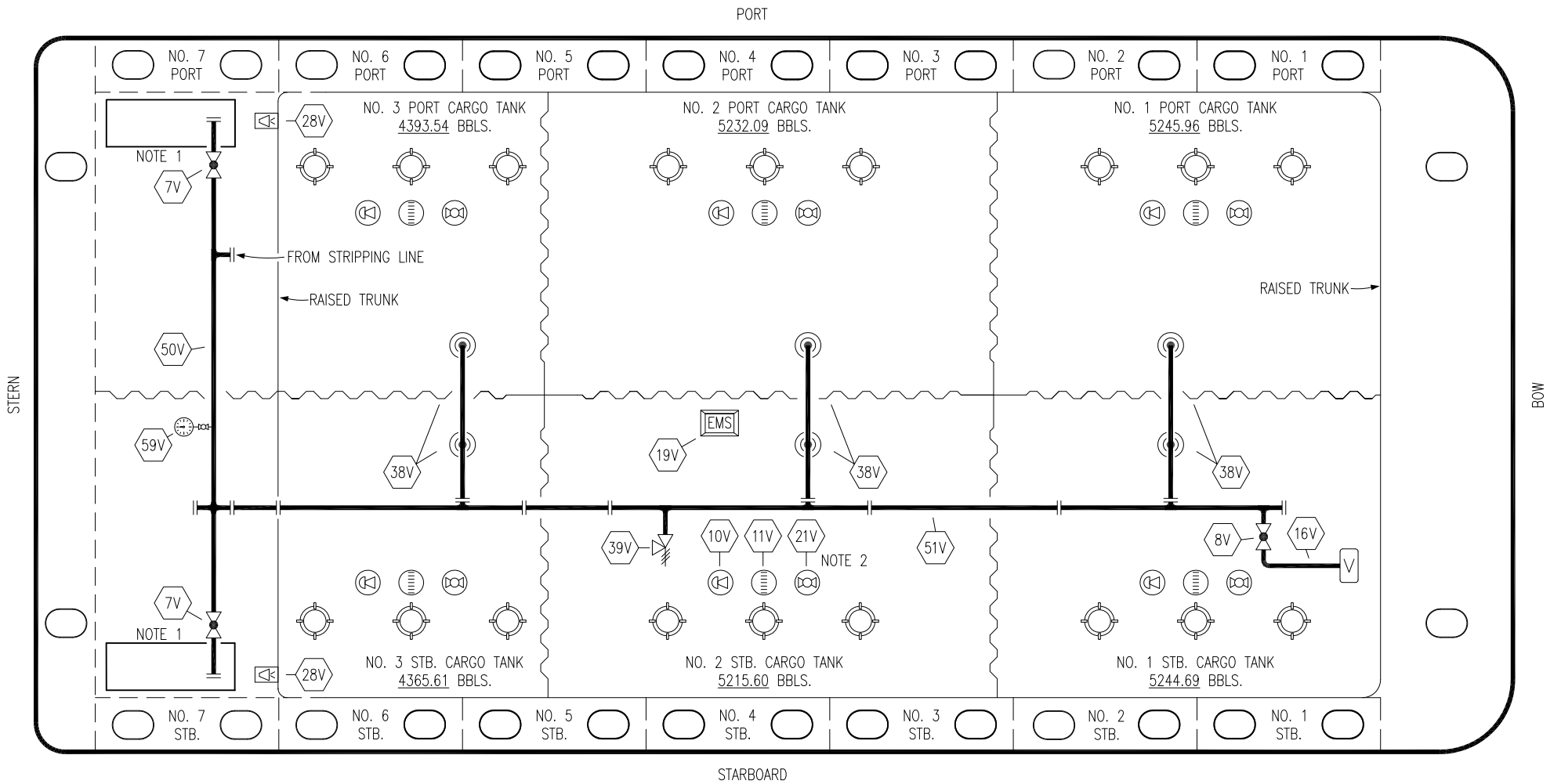
KIRBY INLAND MARINE

CARGO

PIPING FLOW DIAGRAM

HTCO 3144

REV. 0



NO	DESCRIPTION	NO	DESCRIPTION
7V	8" HEADER VALVE	28V	DOCK CONNECTION ALARM
8V	8" VENT STACK VALVE	38V	8" VAPOR PENETRATION (⊙)
10V	HIGH LEVEL/OVERFILL ALARM	39V	PRESSURE/VACUUM VALVE
11V	1-METER GAUGE STICK	50V	8" VAPOR HEADER
16V	VAPOR VENT STACK	51V	8" VAPOR PIPELINE
19V	EMERGENCY ENGINE SHUT DOWN	59V	PRESS/VAC GAUGE
21V	2" HERMETIC GAUGE	—	ABOVE DECK PIPING

NOTE 2: TYPICAL RIGGING IN EACH TANK

NOTE 1: CONTAINMENT P/S

REV.	DATE	BY	CHK	APP	REVISION DESCRIPTION
0	01/13/20	MRV	DDA		ISSUED FOR APPROVAL

KIRBY INLAND MARINE 

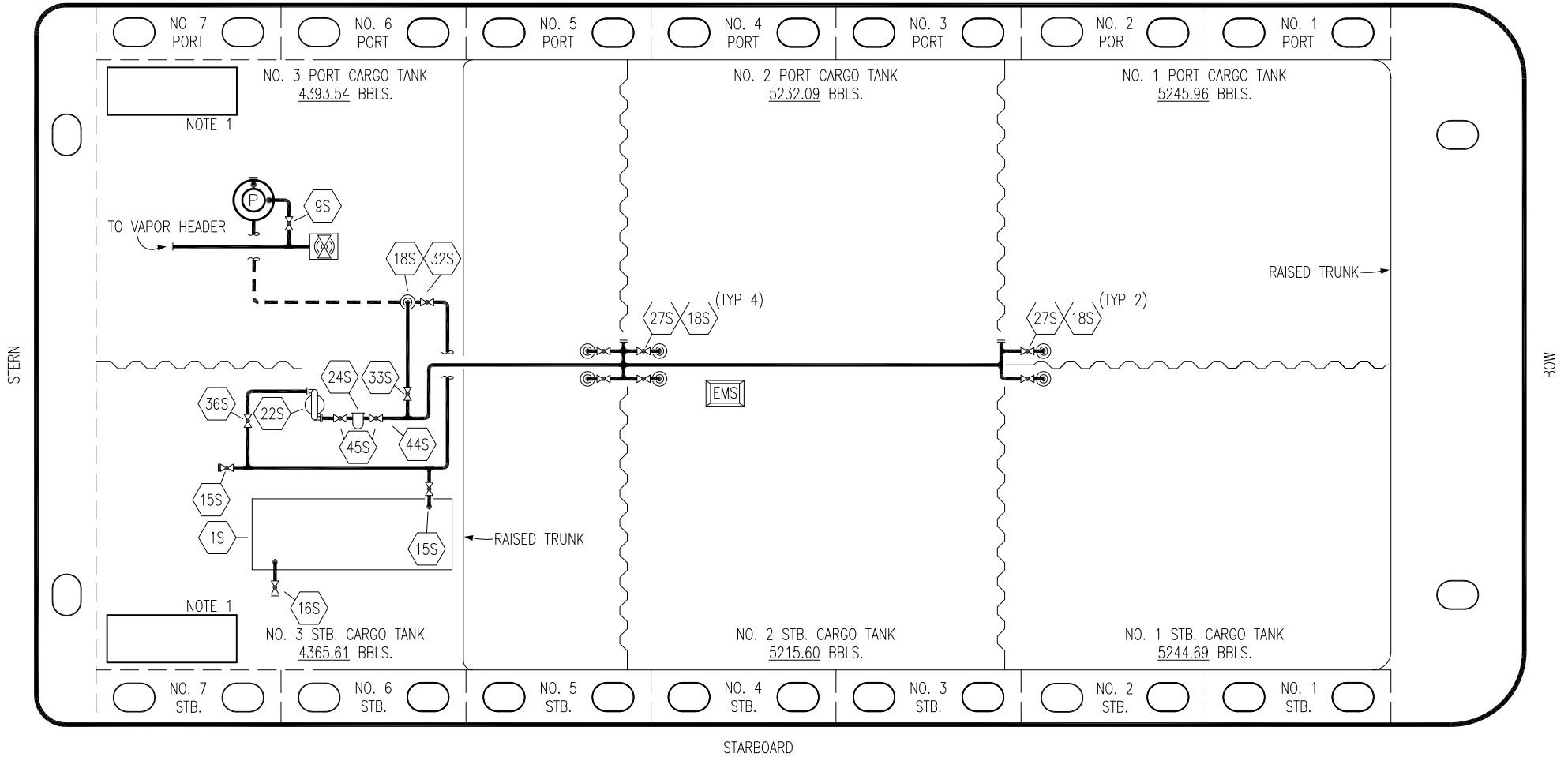
**VAPOR
PIPING FLOW DIAGRAM**

SCALE: NONE
PAGE: 2 OF 3

HTCO 3144

REV. **0**

PORT



NO	DESCRIPTION	NO	DESCRIPTION
1S	SLOP TANK	32S	PUMP WELL PRIMER VALVE
9S	BURP VALVE	33S	PUMP WELL SUCTION
15S	DISCHARGE VALVE	36S	STRIPPING PUMP DISCHARGE
16S	REMOTE SUCTION CONNECTION	44S	STRIPPING PUMP SUCTION
18S	TYP. STRIPPING PENETRATION	45S	STRIPPING PUMP SUCTION VALVE
22S	STRIPPING PUMP	—	— ABOVE DECK PIPING
24S	BASKET STRAINER	---	--- BELOW DECK PIPING
27S	SUMP SUCTION VALVE		

NOTE 1: CONTAINMENT P/S

REV.	DATE	BY	CHK	APP	REVISION DESCRIPTION
0	01/13/20	MRV	DDA		ISSUED FOR APPROVAL



KIRBY INLAND MARINE

**STRIPPING
PIPING FLOW DIAGRAM**

HTCO 3144

SCALE: NONE	REV. 0
PAGE: 3 OF 3	