


NO	DESCRIPTION	NO	DESCRIPTION
1C	CARGO TANK VALVE	13C	CARGO PIPING BLOCK VALVE
2C	LOAD VALVE	19C	CARGO HEADER
3C	MASTER SUCTION VALVE	30C	CARGO PIPELINE
4C	DISCHARGE VALVE	31C	BYPASS VALVE
5C	HEADER VALVE	36C	PRESSURE GAUGE
6C	SALVAGE VALVE	37C	CARGO DROP
8C	RELIEF VALVE		
9C	CHECK VALVE		
		—	ABOVE DECK PIPING
		- - -	BELOW DECK PIPING

NOTE 1: CONTAINMENT P/S

0	02/04/20	MRV	DDA		ISSUED FOR APPROVAL
REV.	DATE	BY	CHK	APP	REVISION DESCRIPTION



**KIRBY INLAND MARINE**

**CARGO**

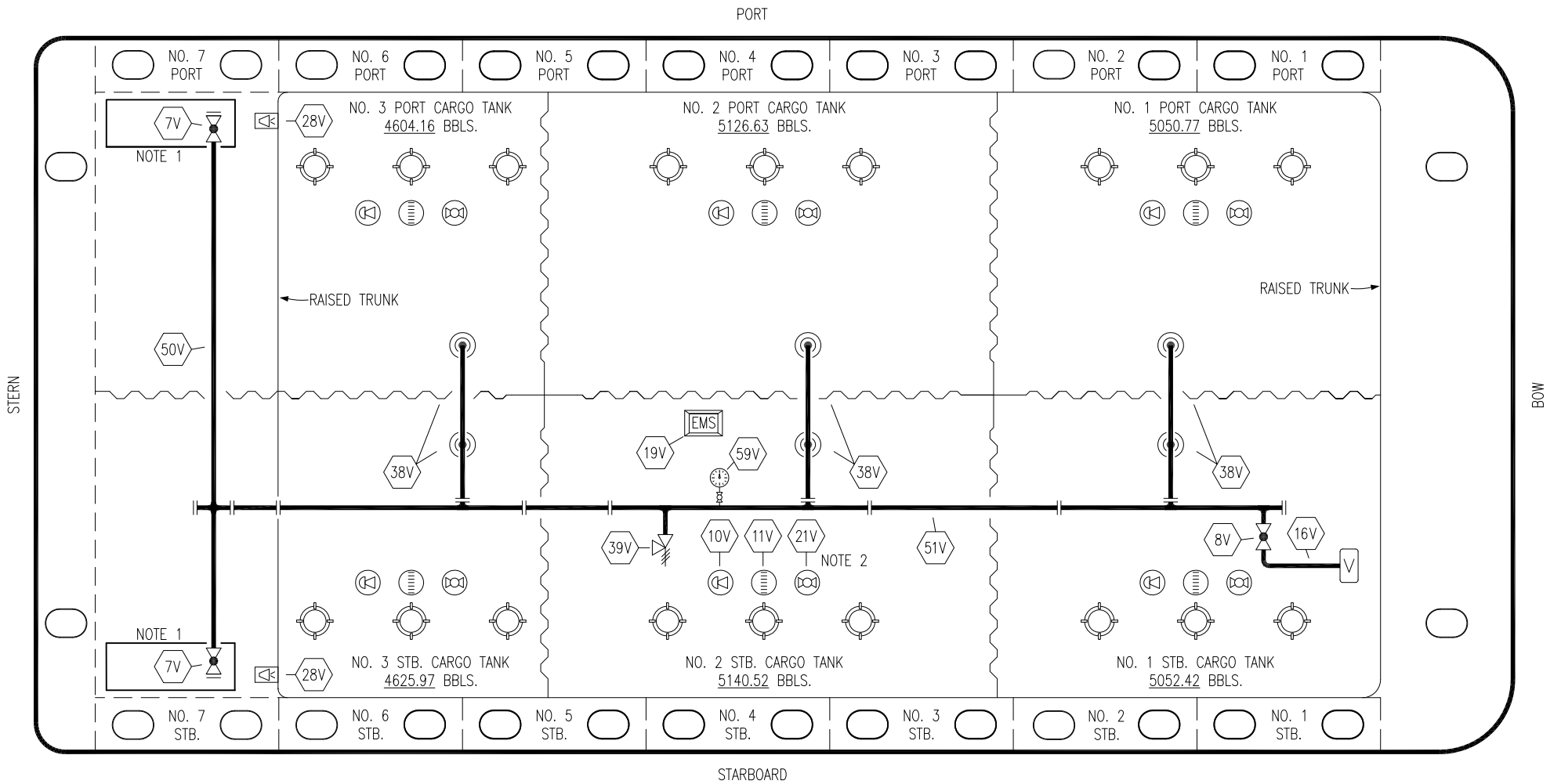
**PIPING FLOW DIAGRAM**

**HTCO 3142**

SCALE: NONE

PAGE: 1 OF 3

REV. **0**



NO	DESCRIPTION	NO	DESCRIPTION
7V	8" HEADER VALVE	28V	DOCK CONNECTION ALARM
8V	8" VENT STACK VALVE	38V	8" VAPOR PENETRATION (⊙)
10V	HIGH LEVEL/OVERFILL ALARM	39V	PRESSURE/VACUUM VALVE
11V	1-METER GAUGE STICK	50V	8" VAPOR HEADER
16V	VAPOR VENT STACK	51V	8" VAPOR PIPELINE
19V	EMERGENCY ENGINE SHUT DOWN	59V	PRESS/VAC GAUGE
21V	2" HERMETIC GAUGE	—	ABOVE DECK PIPING

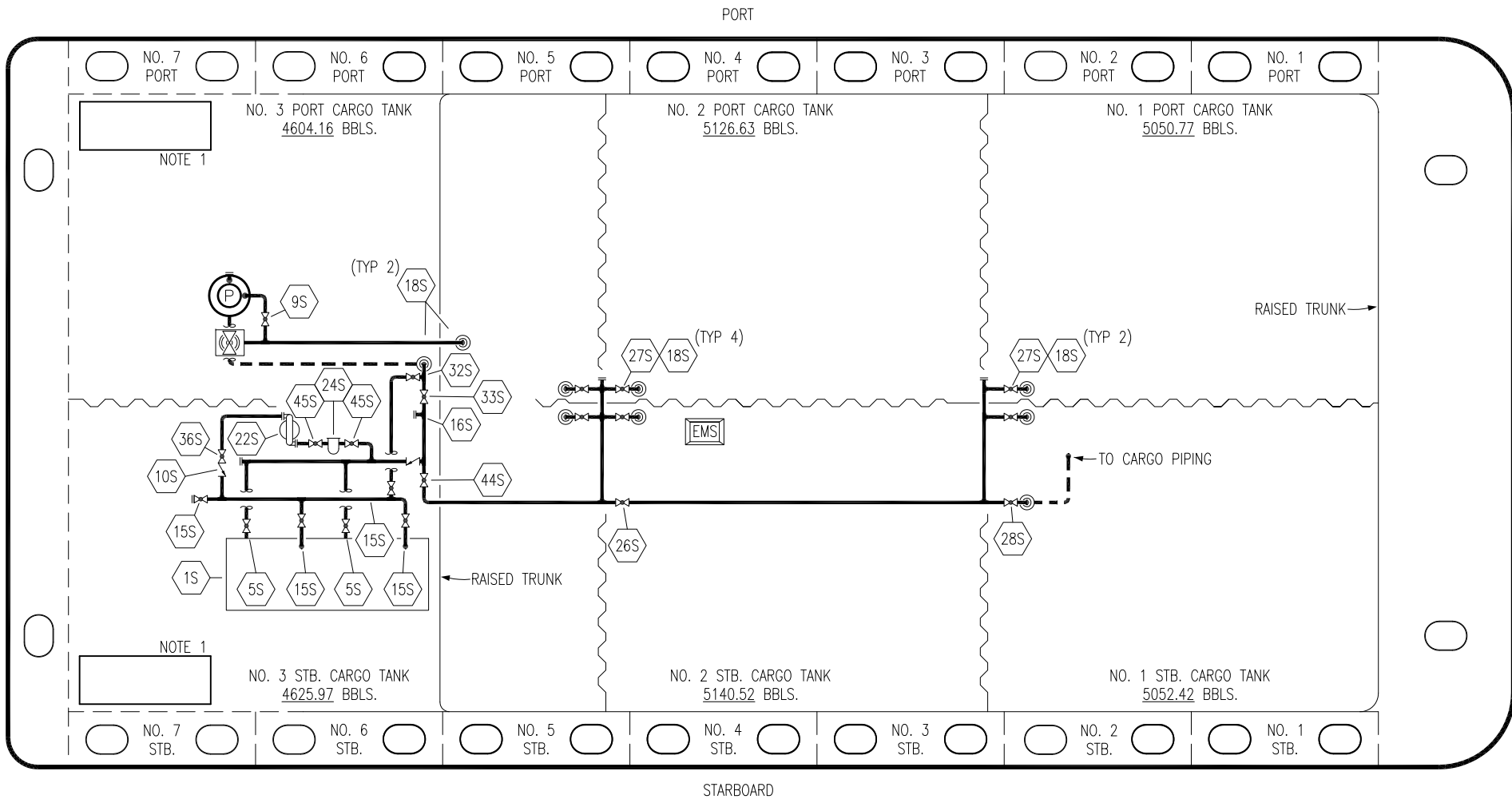
NOTE 2: TYPICAL RIGGING IN EACH TANK  
 NOTE 1: CONTAINMENT P/S

0	02/04/20	MRV	DDA	ISSUED FOR APPROVAL	
REV.	DATE	BY	CHK	APP	REVISION DESCRIPTION

**KIRBY INLAND MARINE**

**VAPOR  
PIPING FLOW DIAGRAM**

SCALE: NONE	<b>HTCO 3142</b>	REV. 0
PAGE: 2 OF 3		



- |     |                            |     |                              |
|-----|----------------------------|-----|------------------------------|
| NO  | DESCRIPTION                | NO  | DESCRIPTION                  |
| 1S  | SLOP TANK                  | 26S | STRIPPING HEADER BLOCK VALVE |
| 5S  | SLOP TANK SUCTION VALVE    | 27S | SUMP SUCTION VALVE           |
| 9S  | BURP VALVE                 | 28S | CARGO PIPING SUCTION         |
| 10S | STRIPPING PUMP CHECK VALVE | 32S | PUMP WELL PRIMER VALVE       |
| 15S | DISCHARGE VALVE            | 33S | PUMP WELL SUCTION            |
| 16S | REMOTE SUCTION CONNECTION  | 36S | STRIPPING PUMP DISCHARGE     |
| 18S | TYP. STRIPPING PENETRATION | 44S | STRIPPING PUMP SUCTION       |
| 22S | STRIPPING PUMP             | 45S | STRIPPING PUMP SUCTION VALVE |
| 24S | BASKET STRAINER            |     | — ABOVE DECK PIPING          |
|     |                            |     | - - - BELOW DECK PIPING      |

NOTE 1: CONTAINMENT P/S

REV.	DATE	BY	CHK	APP	REVISION DESCRIPTION
0	02/04/20	MRV	DDA		ISSUED FOR APPROVAL



**KIRBY INLAND MARINE**

**STRIPPING**

**PIPING FLOW DIAGRAM**

**HTCO 3142**

SCALE: NONE	REV. 0
PAGE: 3 OF 3	