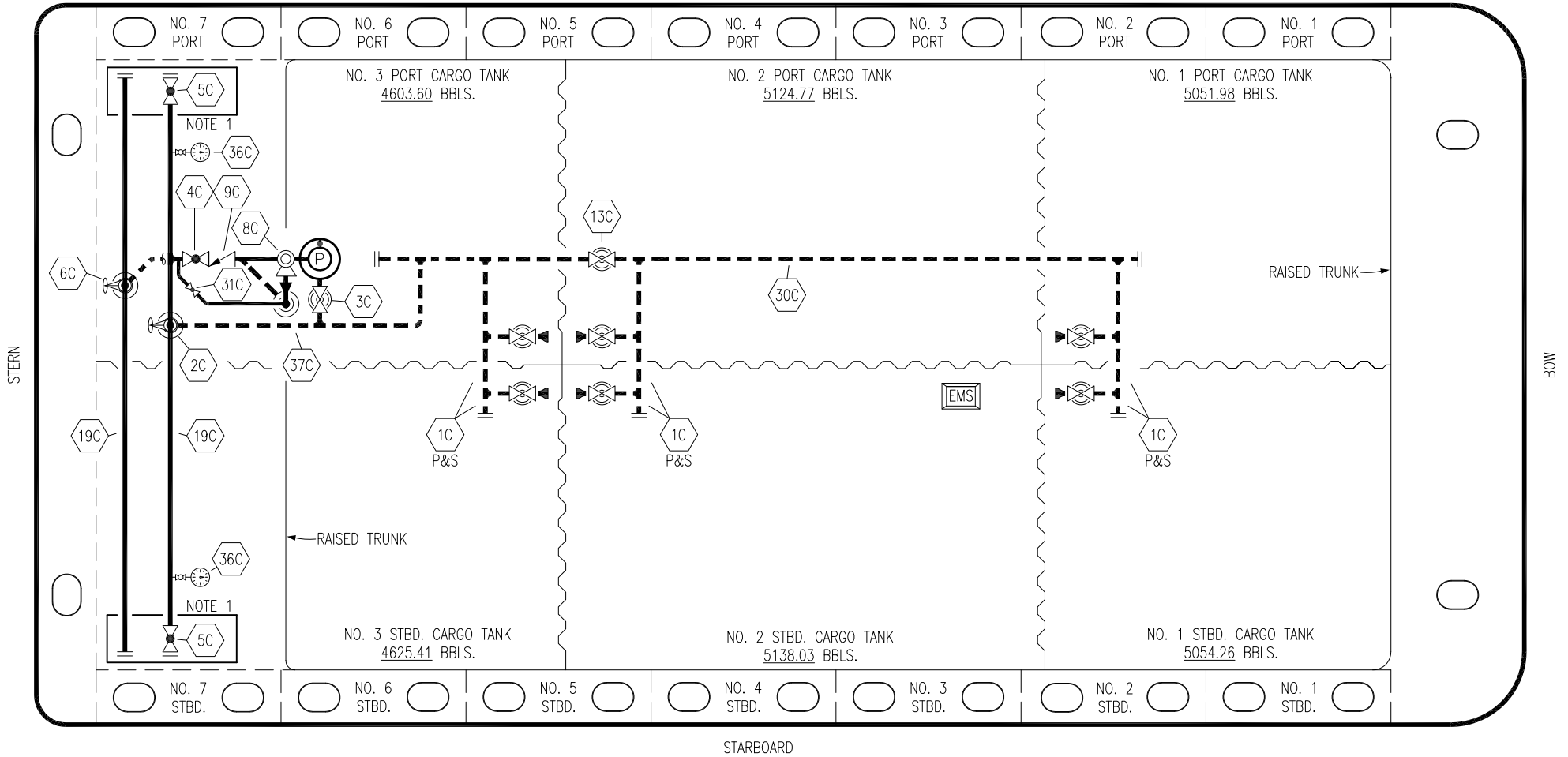


PORT



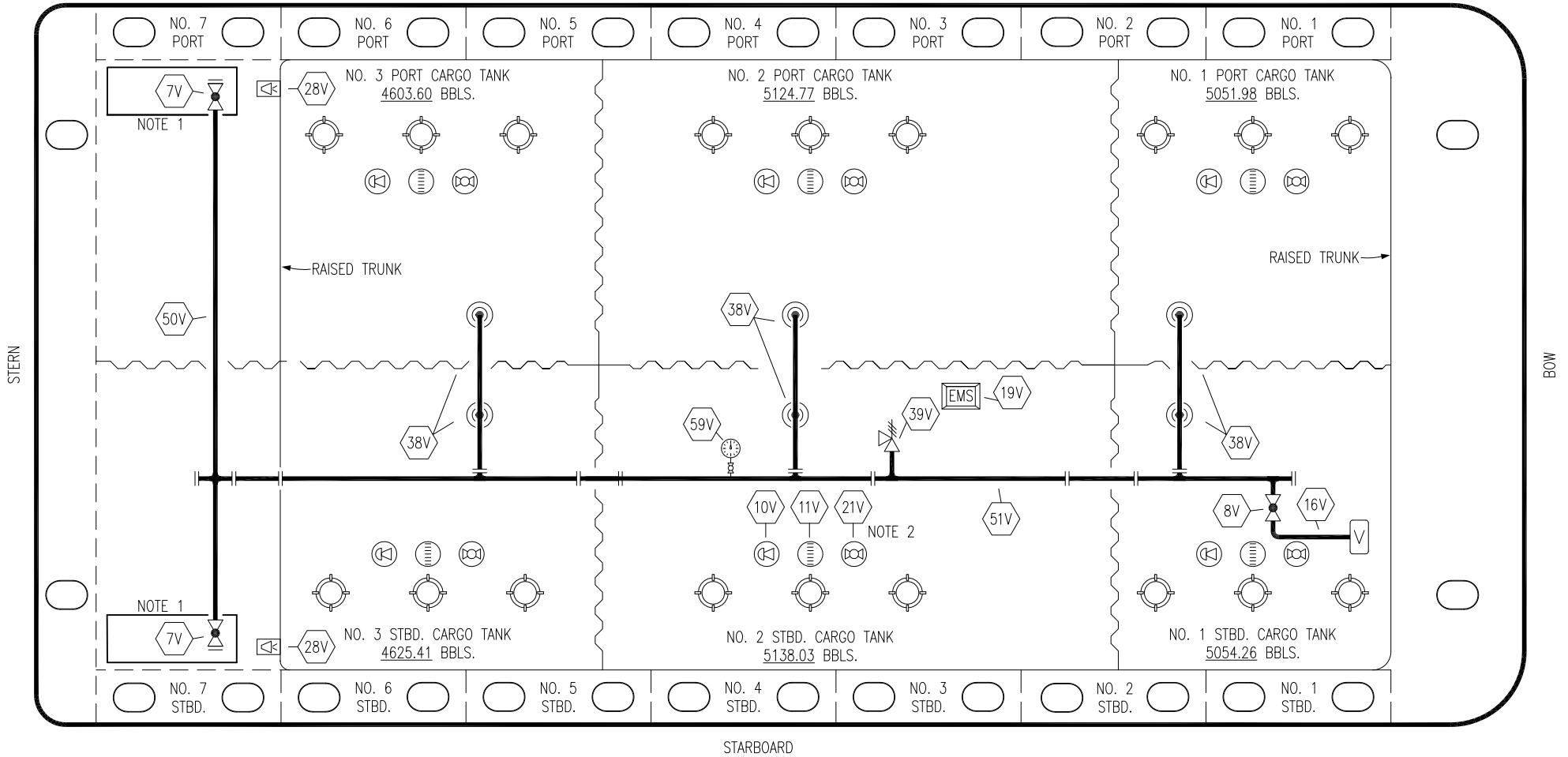
- | | | | |
|----|----------------------|-----|--------------------------|
| NO | DESCRIPTION | NO | DESCRIPTION |
| 1C | CARGO TANK VALVE | 13C | CARGO PIPING BLOCK VALVE |
| 2C | LOAD VALVE | 19C | CARGO HEADER |
| 3C | MASTER SUCTION VALVE | 30C | CARGO PIPELINE |
| 4C | DISCHARGE VALVE | 31C | BYPASS VALVE |
| 5C | HEADER VALVE | 36C | PRESSURE GAUGE |
| 6C | SALVAGE VALVE | 37C | CARGO DROP |
| 8C | RELIEF VALVE | | ABOVE DECK PIPING |
| 9C | CHECK VALVE | | BELOW DECK PIPING |

NOTE 1: CONTAINMENT P/S

0	06/23/20	MRV	DDA	RDJ	ISSUED FOR APPROVAL
REV.	DATE	BY	CHK	APP	REVISION DESCRIPTION

CARGO PIPING FLOW DIAGRAM	
SCALE: NONE	HTCO 3140
PAGE: 1 OF 3	
	REV. 0


PORT



NO	DESCRIPTION	NO	DESCRIPTION
7V	8" HEADER VALVE	28V	DOCK CONNECTION ALARM
8V	8" VENT STACK VALVE	38V	8" VAPOR PENETRATION (☉)
10V	HIGH LEVEL/OVERFILL ALARM	39V	PRESSURE/VACUUM VALVE
11V	1-METER GAUGE STICK	50V	8" VAPOR HEADER
16V	VAPOR VENT STACK	51V	8" VAPOR PIPELINE
19V	EMERGENCY ENGINE SHUT DOWN	59V	PRESS/VAC GAUGE
21V	2" HERMETIC GAUGE	—	ABOVE DECK PIPING

NOTE 2: TYPICAL RIGGING IN EACH TANK
 NOTE 1: CONTAINMENT P/S

0	06/23/20	MRV	DDA	RDJ	ISSUED FOR APPROVAL
REV.	DATE	BY	CHK	APP	REVISION DESCRIPTION



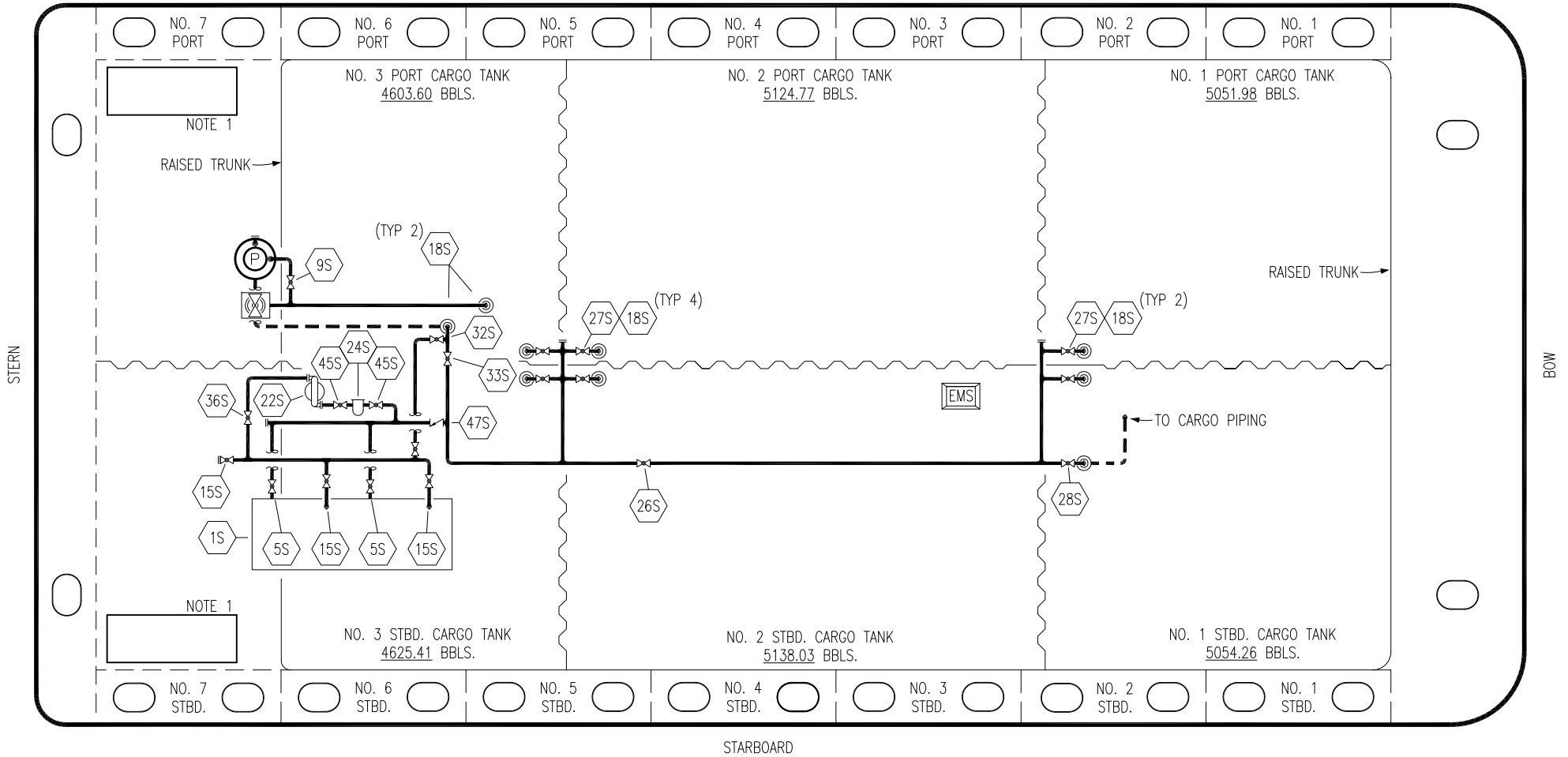
KIRBY INLAND MARINE

VAPOR PIPING FLOW DIAGRAM

HTCO 3140

SCALE: NONE	REV. 0
PAGE: 2 OF 3	

PORT



- | | | | |
|-----|------------------------------|-------|------------------------------------|
| NO | DESCRIPTION | NO | DESCRIPTION |
| 1S | SLOP TANK | 32S | PUMP WELL PRIMER VALVE |
| 5S | SLOP TANK SUCTION VALVE | 33S | PUMP WELL SUCTION |
| 9S | BURP VALVE | 36S | STRIPPING PUMP DISCHARGE |
| 15S | DISCHARGE VALVE | 45S | STRIPPING PUMP SUCTION VALVE |
| 18S | TYP. STRIPPING PENETRATION | 47S | STRIPPING PUMP SUCTION CHECK VALVE |
| 22S | STRIPPING PUMP | — | — ABOVE DECK PIPING |
| 24S | BASKET STRAINER | - - - | - - - BELOW DECK PIPING |
| 26S | STRIPPING HEADER BLOCK VALVE | | |
| 27S | SUMP SUCTION VALVE | | |
| 28S | CARGO PIPING SUCTION | | |

NOTE 1: CONTAINMENT P/S

0	06/23/20	MRV	DDA	RDJ	ISSUED FOR APPROVAL
REV.	DATE	BY	CHK	APP	REVISION DESCRIPTION

KIRBY INLAND MARINE

**STRIPPING
PIPING FLOW DIAGRAM**

SCALE: NONE	HTCO 3140	REV. 0
PAGE: 3 OF 3		