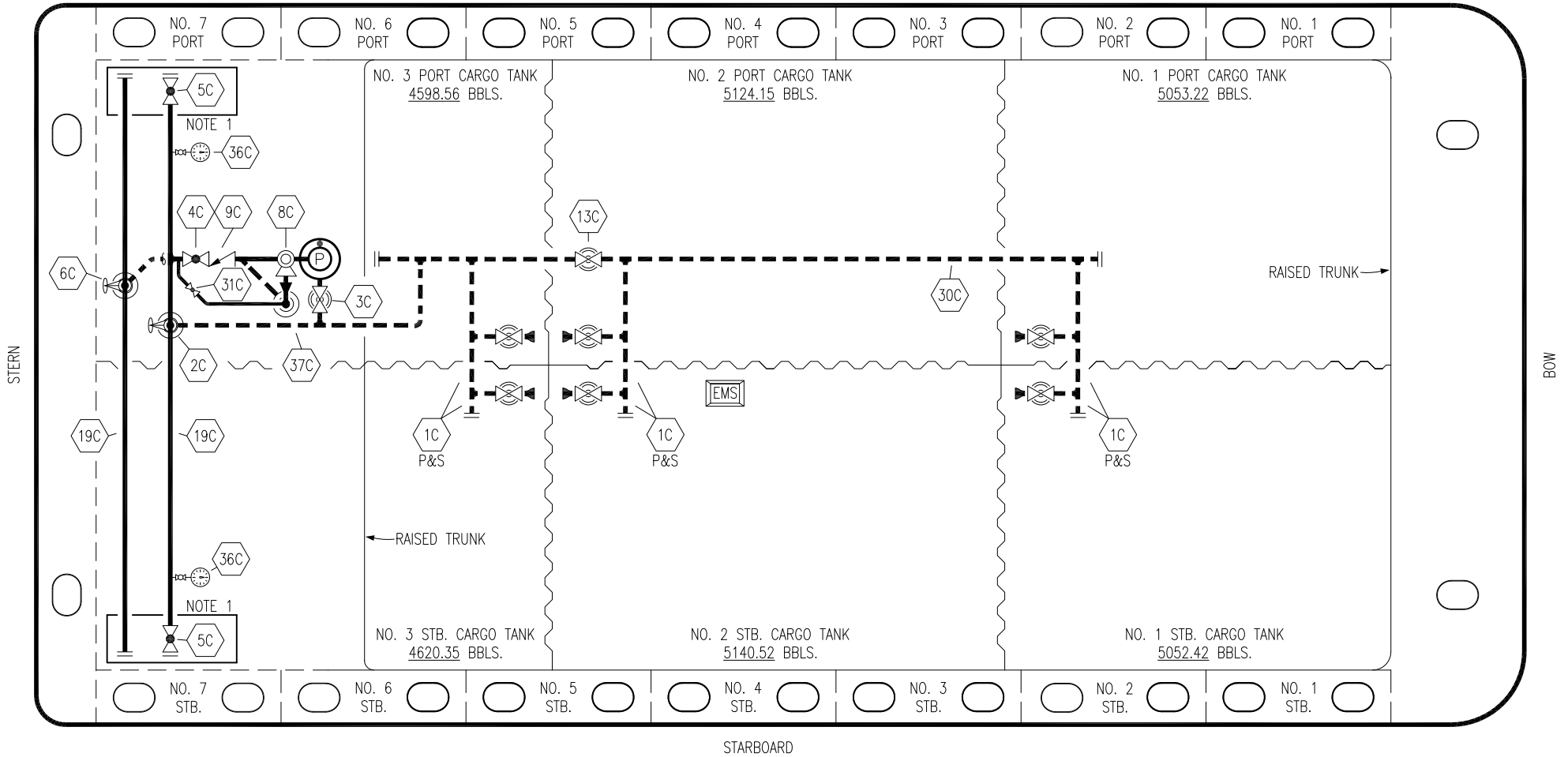


PORT



STERN

BOW

STARBOARD

- | | | | |
|----|----------------------|-----|--------------------------|
| NO | DESCRIPTION | NO | DESCRIPTION |
| 1C | CARGO TANK VALVE | 13C | CARGO PIPING BLOCK VALVE |
| 2C | LOAD VALVE | 19C | CARGO HEADER |
| 3C | MASTER SUCTION VALVE | 30C | CARGO PIPELINE |
| 4C | DISCHARGE VALVE | 31C | BYPASS VALVE |
| 5C | HEADER VALVE | 36C | PRESSURE GAUGE |
| 6C | SALVAGE VALVE | 37C | CARGO DROP |
| 8C | RELIEF VALVE | — | — ABOVE DECK PIPING |
| 9C | CHECK VALVE | --- | --- BELOW DECK PIPING |

NOTE 1: CONTAINMENT P/S

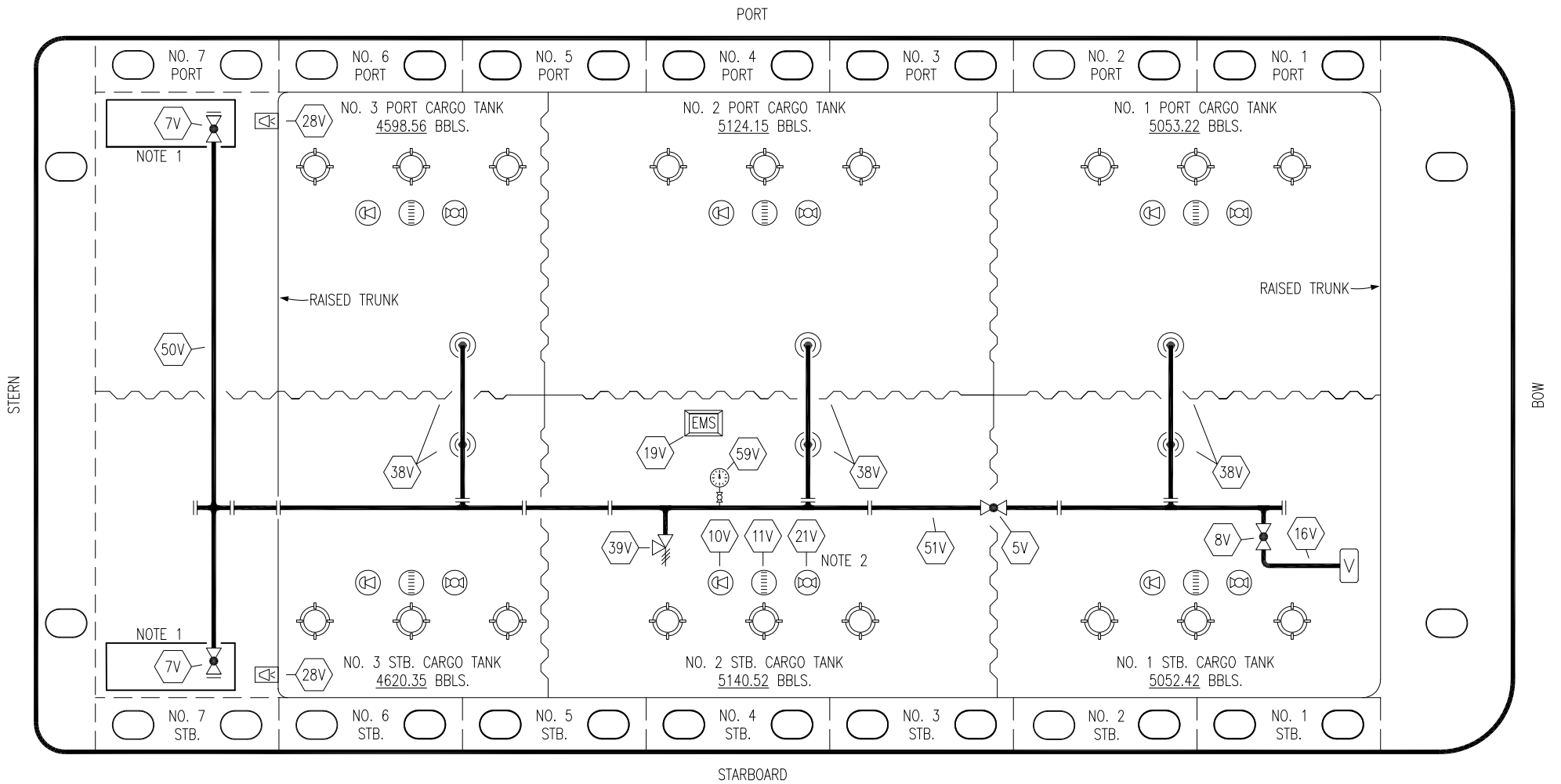
0	05/04/20	MRV	DDA	ISSUED FOR APPROVAL
REV.	DATE	BY	CHK	APP
				REVISION DESCRIPTION

KIRBY INLAND MARINE

CARGO
PIPING FLOW DIAGRAM

HTCO 3139

SCALE: NONE	REV. 0
PAGE: 1 OF 3	



NO	DESCRIPTION	NO	DESCRIPTION
5V	BLOCK VALVE	28V	DOCK CONNECTION ALARM
7V	8" HEADER VALVE	38V	8" VAPOR PENETRATION
8V	8" VENT STACK VALVE	39V	PRESSURE/VACUUM VALVE
10V	HIGH LEVEL/OVERFILL ALARM	50V	8" VAPOR HEADER
11V	1-METER GAUGE STICK	51V	8" VAPOR PIPELINE
16V	VAPOR VENT STACK	59V	PRESS/VAC GAUGE
19V	EMERGENCY ENGINE SHUT DOWN	—	ABOVE DECK PIPING
21V	2" HERMETIC GAUGE		

NOTE 2: TYPICAL RIGGING IN EACH TANK

NOTE 1: CONTAINMENT P/S

REV.	DATE	BY	CHK	APP	REVISION DESCRIPTION
0	05/04/20	MRV	DDA		ISSUED FOR APPROVAL

KIRBY INLAND MARINE 

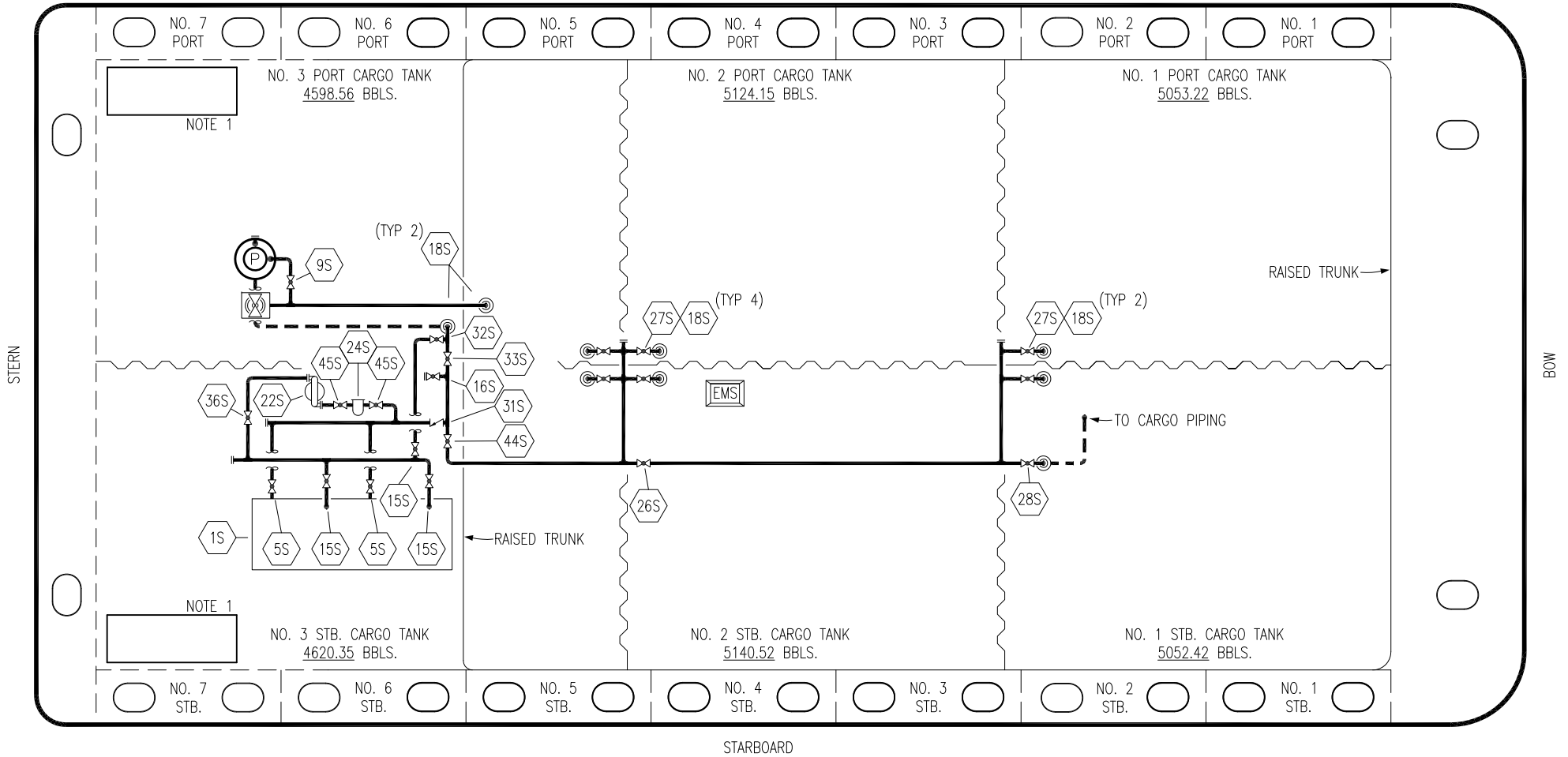
**VAPOR
PIPING FLOW DIAGRAM**

SCALE: NONE
PAGE: 2 OF 3

HTCO 3139

REV. **0**

PORT



- | | | | |
|-----|--------------------------------|-------|------------------------------|
| NO | DESCRIPTION | NO | DESCRIPTION |
| 1S | SLOP TANK | 28S | CARGO PIPING SUCTION |
| 5S | SLOP TANK SUCTION VALVE | 31S | CHECK VALVE |
| 9S | BURP VALVE | 32S | PUMP WELL PRIMER VALVE |
| 15S | DISCHARGE VALVE | 33S | PUMP WELL SUCTION |
| 16S | REMOTE SUCTION CONNECTION | 36S | STRIPPING PUMP DISCHARGE |
| 18S | TYP. STRIPPING PENETRATION (⊙) | 44S | STRIPPING PUMP SUCTION |
| 22S | STRIPPING PUMP | 45S | STRIPPING PUMP SUCTION VALVE |
| 24S | BASKET STRAINER | — | ABOVE DECK PIPING |
| 26S | STRIPPING HEADER BLOCK VALVE | - - - | BELOW DECK PIPING |
| 27S | SUMP SUCTION VALVE | | |

NOTE 1: CONTAINMENT P/S

0	05/04/20	MRV	DDA	ISSUED FOR APPROVAL
REV.	DATE	BY	CHK	APP
				REVISION DESCRIPTION

KIRBY INLAND MARINE

STRIPPING
PIPING FLOW DIAGRAM

SCALE: NONE	HTCO 3139	REV. 0
PAGE: 3 OF 3		