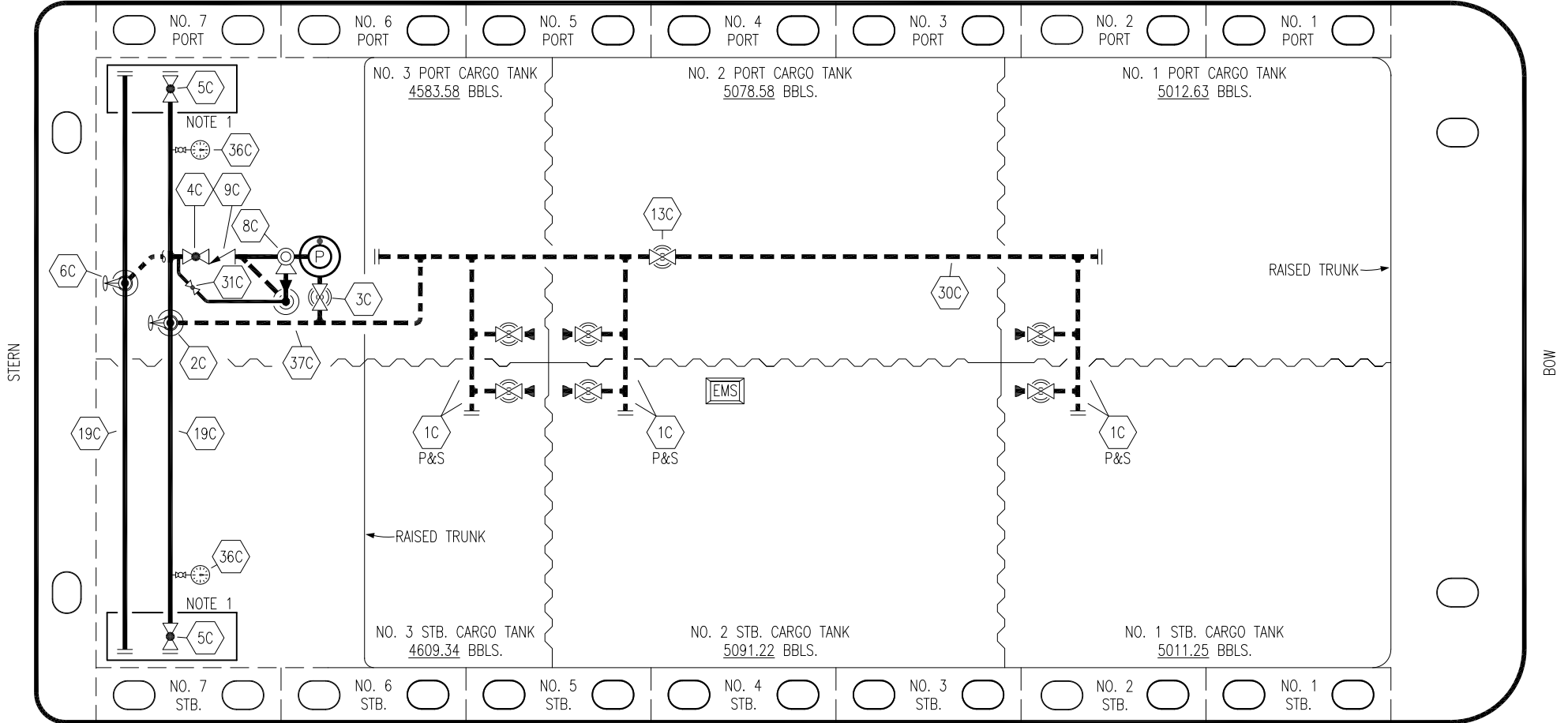




PORT




STARBOARD

- | | | | |
|----|----------------------|---|--------------------------|
| NO | DESCRIPTION | NO | DESCRIPTION |
| 1C | CARGO TANK VALVE | 13C | CARGO PIPING BLOCK VALVE |
| 2C | LOAD VALVE | 19C | CARGO HEADER |
| 3C | MASTER SUCTION VALVE | 30C | CARGO PIPELINE |
| 4C | DISCHARGE VALVE | 31C | BYPASS VALVE |
| 5C | HEADER VALVE | 36C | PRESSURE GAUGE |
| 6C | SALVAGE VALVE | 37C | CARGO DROP |
| 8C | RELIEF VALVE | | |
| 9C | CHECK VALVE |  | ABOVE DECK PIPING |
| | |  | BELOW DECK PIPING |

NOTE 1: CONTAINMENT P/S

0	02/18/20	MRV	DDA							ISSUED FOR APPROVAL
REV.	DATE	BY	CHK	APP						REVISION DESCRIPTION

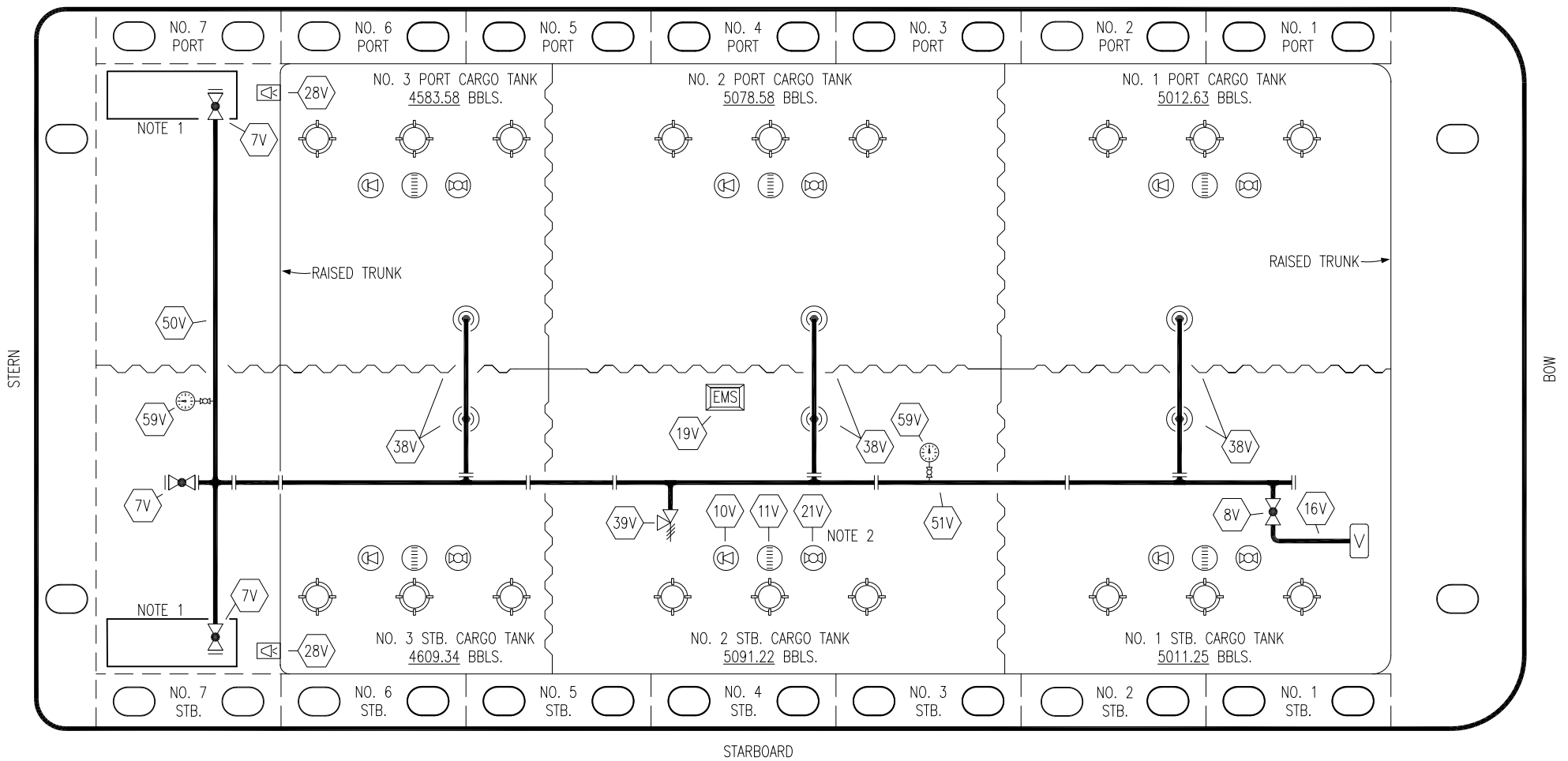
TRINITY

KIRBY INLAND MARINE 

**CARGO
PIPING FLOW DIAGRAM**

HTCO 3135	SCALE: NONE	REV. 0
	PAGE: 1 OF 3	

PORT



STARBOARD

NO	DESCRIPTION	NO	DESCRIPTION
7V	8" HEADER VALVE	28V	DOCK CONNECTION ALARM
8V	8" VENT STACK VALVE	38V	8" VAPOR PENETRATION
10V	HIGH LEVEL/OVERFILL ALARM	39V	PRESSURE/VACUUM VALVE
11V	1-METER GAUGE STICK	50V	8" VAPOR HEADER
16V	VAPOR VENT STACK	51V	8" VAPOR PIPELINE
19V	EMERGENCY ENGINE SHUT DOWN	59V	PRESS/VAC GAUGE
21V	2" HERMETIC GAUGE	—	ABOVE DECK PIPING

NOTE 2: TYPICAL RIGGING IN EACH TANK

NOTE 1: CONTAINMENT P/S

TRINITY

KIRBY INLAND MARINE 

**VAPOR
PIPING FLOW DIAGRAM**

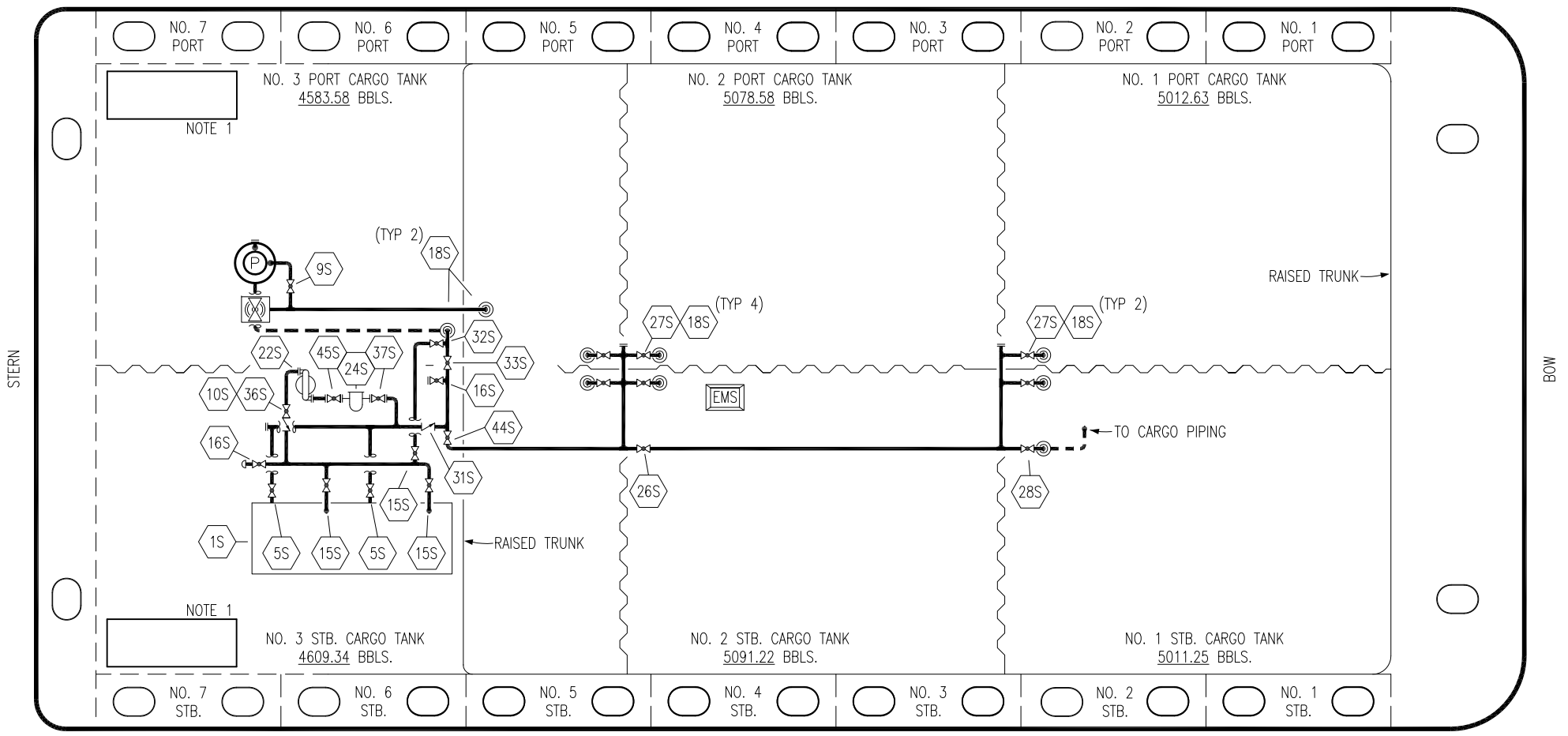
0	02/18/20	MRV	DDA	ISSUED FOR APPROVAL
REV.	DATE	BY	CHK	APP
				REVISION DESCRIPTION

SCALE: NONE
PAGE: 2 OF 3

HTCO 3135

REV. **0**

PORT



STARBOARD

NO	DESCRIPTION	NO	DESCRIPTION
1S	SLOP TANK	28S	CARGO PIPING SUCTION
5S	SLOP TANK SUCTION VALVE	31S	CHECK VALVE
9S	BURP VALVE	32S	PUMP WELL PRIMER VALVE
10S	STRIPPING PUMP CHECK VALVE	33S	PUMP WELL SUCTION
15S	DISCHARGE VALVE	36S	STRIPPING PUMP DISCHARGE
16S	REMOTE SUCTION CONNECTION	37S	BLOCK VALVE
18S	TYP. STRIPPING PENETRATION (⊙)	44S	STRIPPING PUMP SUCTION
22S	STRIPPING PUMP	45S	STRIPPING PUMP SUCTION VALVE
24S	BASKET STRAINER	—	— ABOVE DECK PIPING
26S	STRIPPING HEADER BLOCK VALVE	- - -	BELOW DECK PIPING
27S	SUMP SUCTION VALVE		

NOTE 1: CONTAINMENT P/S

0	02/18/20	MRV	DDA	ISSUED FOR APPROVAL
REV.	DATE	BY	CHK	APP
				REVISION DESCRIPTION

TRINITY

KIRBY INLAND MARINE

**STRIPPING
PIPING FLOW DIAGRAM**

SCALE: NONE	HTCO 3135	REV. 0
PAGE: 3 OF 3		