

- | | | | |
|----|----------------------|-----|--------------------------|
| NO | DESCRIPTION | NO | DESCRIPTION |
| 1C | CARGO TANK VALVE | 13C | CARGO PIPING BLOCK VALVE |
| 2C | LOAD VALVE | 19C | CARGO HEADER |
| 3C | MASTER SUCTION VALVE | 30C | CARGO PIPELINE |
| 4C | DISCHARGE VALVE | 31C | BYPASS VALVE |
| 5C | HEADER VALVE | 36C | PRESSURE GAUGE |
| 6C | SALVAGE VALVE | 37C | CARGO DROP |
| 8C | RELIEF VALVE | | ABOVE DECK PIPING |
| 9C | CHECK VALVE | | BELOW DECK PIPING |

NOTE 1: CONTAINMENT P/S

0	03/27/19	MRV	DDA	ISSUED FOR APPROVAL
REV.	DATE	BY	CHK	APP
				REVISION DESCRIPTION

TRINITY

KIRBY INLAND MARINE

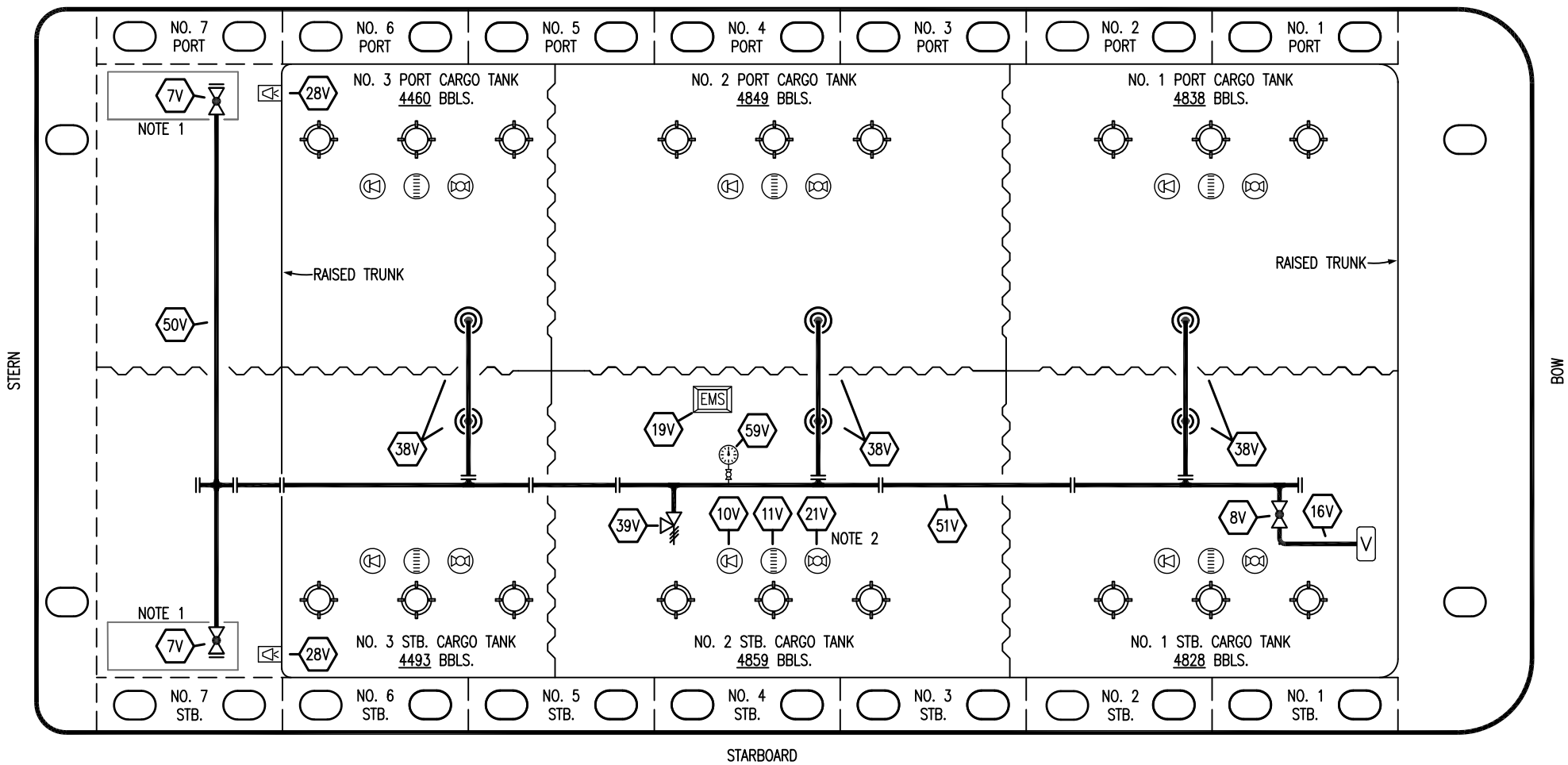
CARGO

PIPING FLOW DIAGRAM

HTCO 3127

SCALE: NONE	REV. 0
PAGE: 1 OF 3	

PORT



STARBOARD

- | | |
|-----|----------------------------|
| NO | DESCRIPTION |
| 7V | 8" HEADER VALVE |
| 8V | 8" VENT STACK VALVE |
| 10V | HIGH LEVEL/OVERFILL ALARM |
| 11V | 1-METER GAUGE STICK |
| 16V | VAPOR VENT STACK |
| 19V | EMERGENCY ENGINE SHUT DOWN |
| 21V | 2" HERMETIC GAUGE |

- | | |
|-----|--------------------------|
| NO | DESCRIPTION |
| 28V | DOCK CONNECTION ALARM |
| 38V | 8" VAPOR PENETRATION (C) |
| 39V | PRESSURE/VACUUM VALVE |
| 50V | 8" VAPOR HEADER |
| 51V | 8" VAPOR PIPELINE |
| 59V | PRESS/VAC GAUGE |
| — | ABOVE DECK PIPING |

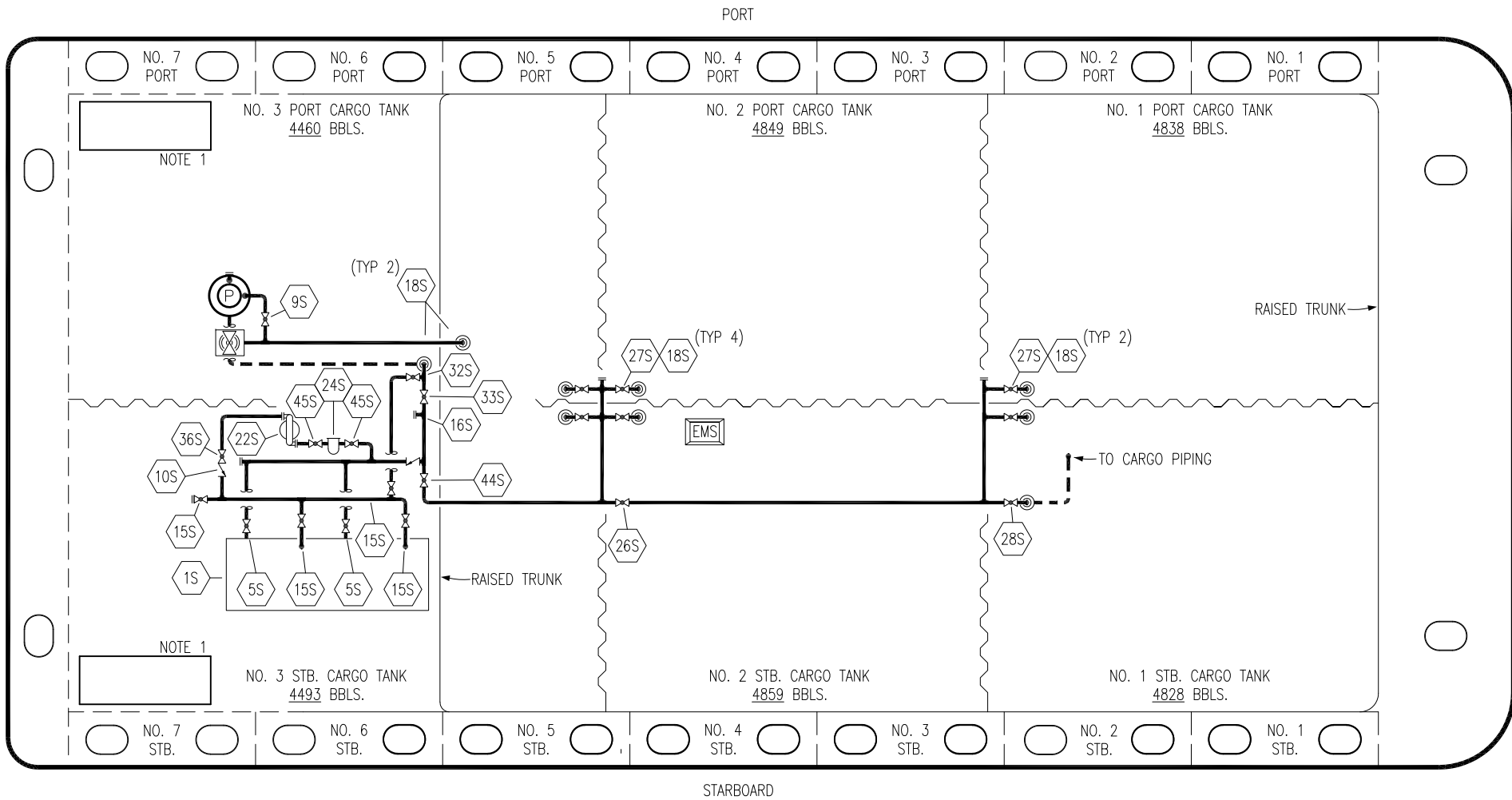
NOTE 2: TYPICAL RIGGING IN EACH TANK

NOTE 1: CONTAINMENT P/S

0	03/27/19	MRV	DDA	ISSUED FOR APPROVAL	
REV.	DATE	BY	CHK	APP	REVISION DESCRIPTION

<p style="text-align: center;">KIRBY INLAND MARINE </p> <p style="text-align: center;">VAPOR</p> <p style="text-align: center;">PIPING FLOW DIAGRAM</p>		SCALE: NONE	HTCO 3127	REV. 0
		PAGE: 2 OF 3		

TRINITY



NO	DESCRIPTION	NO	DESCRIPTION
1S	SLOP TANK	26S	STRIPPING HEADER BLOCK VALVE
5S	SLOP TANK SUCTION VALVE	27S	SUMP SUCTION VALVE
9S	BURP VALVE	28S	CARGO PIPING SUCTION
10S	STRIPPING PUMP CHECK VALVE	32S	PUMP WELL PRIMER VALVE
15S	DISCHARGE VALVE	33S	PUMP WELL SUCTION
16S	REMOTE SUCTION CONNECTION	36S	STRIPPING PUMP DISCHARGE
18S	TYP. STRIPPING PENETRATION	44S	STRIPPING PUMP SUCTION
22S	STRIPPING PUMP	45S	STRIPPING PUMP SUCTION VALVE
24S	BASKET STRAINER	—	— ABOVE DECK PIPING
		---	--- BELOW DECK PIPING

NOTE 1: CONTAINMENT P/S

REV.	DATE	BY	CHK	APP	REVISION DESCRIPTION
0	03/27/19	MRV	DDA		ISSUED FOR APPROVAL

TRINITY

KIRBY INLAND MARINE

**STRIPPING
PIPING FLOW DIAGRAM**

SCALE: NONE	HTCO 3127
PAGE: 3 OF 3	REV. 0