

NO	DESCRIPTION	NO	DESCRIPTION
1C	CARGO TANK VALVE	13C	CARGO PIPING BLOCK VALVE
2C	LOAD VALVE	19C	CARGO HEADER
3C	MASTER SUCTION VALVE	30C	CARGO PIPELINE
4C	DISCHARGE VALVE	31C	BYPASS VALVE
5C	HEADER VALVE	36C	PRESSURE GAUGE
6C	SALVAGE VALVE	37C	CARGO DROP
8C	RELIEF VALVE		ABOVE DECK PIPING
9C	CHECK VALVE		BELOW DECK PIPING

NOTE 1: CONTAINMENT P/S

0	02/25/19	MRV	DDA	ISSUED FOR APPROVAL
REV.	DATE	BY	CHK	APP
				REVISION DESCRIPTION

TRINITY

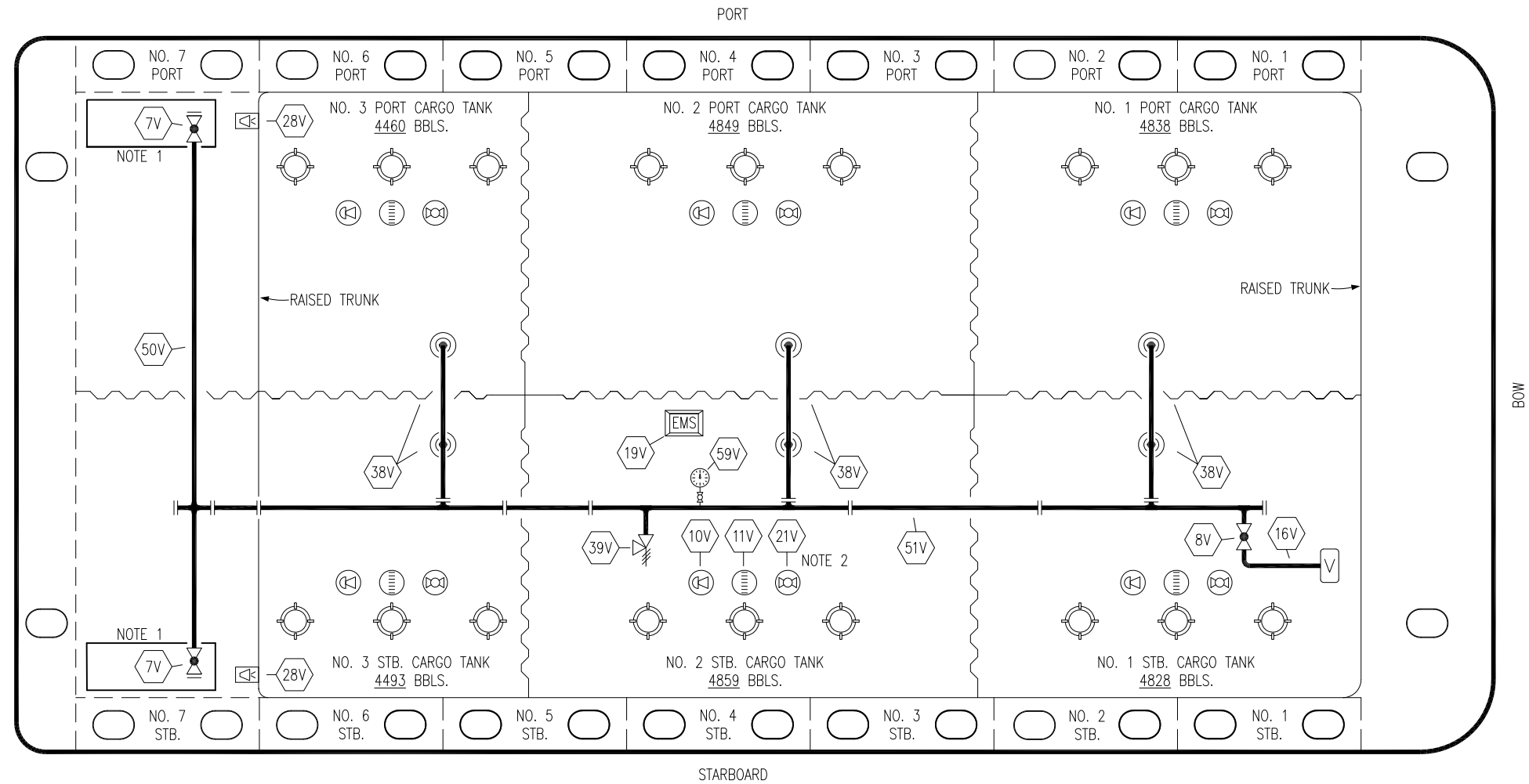
KIRBY INLAND MARINE

**CARGO  
PIPING FLOW DIAGRAM**

**HTCO 3118**

SCALE: NONE  
PAGE: 1 OF 3

REV. **0**



- |     |                            |     |                       |
|-----|----------------------------|-----|-----------------------|
| NO  | DESCRIPTION                | NO  | DESCRIPTION           |
| 7V  | 8" HEADER VALVE            | 28V | DOCK CONNECTION ALARM |
| 8V  | 8" VENT STACK VALVE        | 38V | 8" VAPOR PENETRATION  |
| 10V | HIGH LEVEL/OVERFILL ALARM  | 39V | PRESSURE/VACUUM VALVE |
| 11V | 1-METER GAUGE STICK        | 50V | 8" VAPOR HEADER       |
| 16V | VAPOR VENT STACK           | 51V | 8" VAPOR PIPELINE     |
| 19V | EMERGENCY ENGINE SHUT DOWN | 59V | PRESS/VAC GAUGE       |
| 21V | 2" HERMETIC GAUGE          | —   | ABOVE DECK PIPING     |

NOTE 2: TYPICAL RIGGING IN EACH TANK

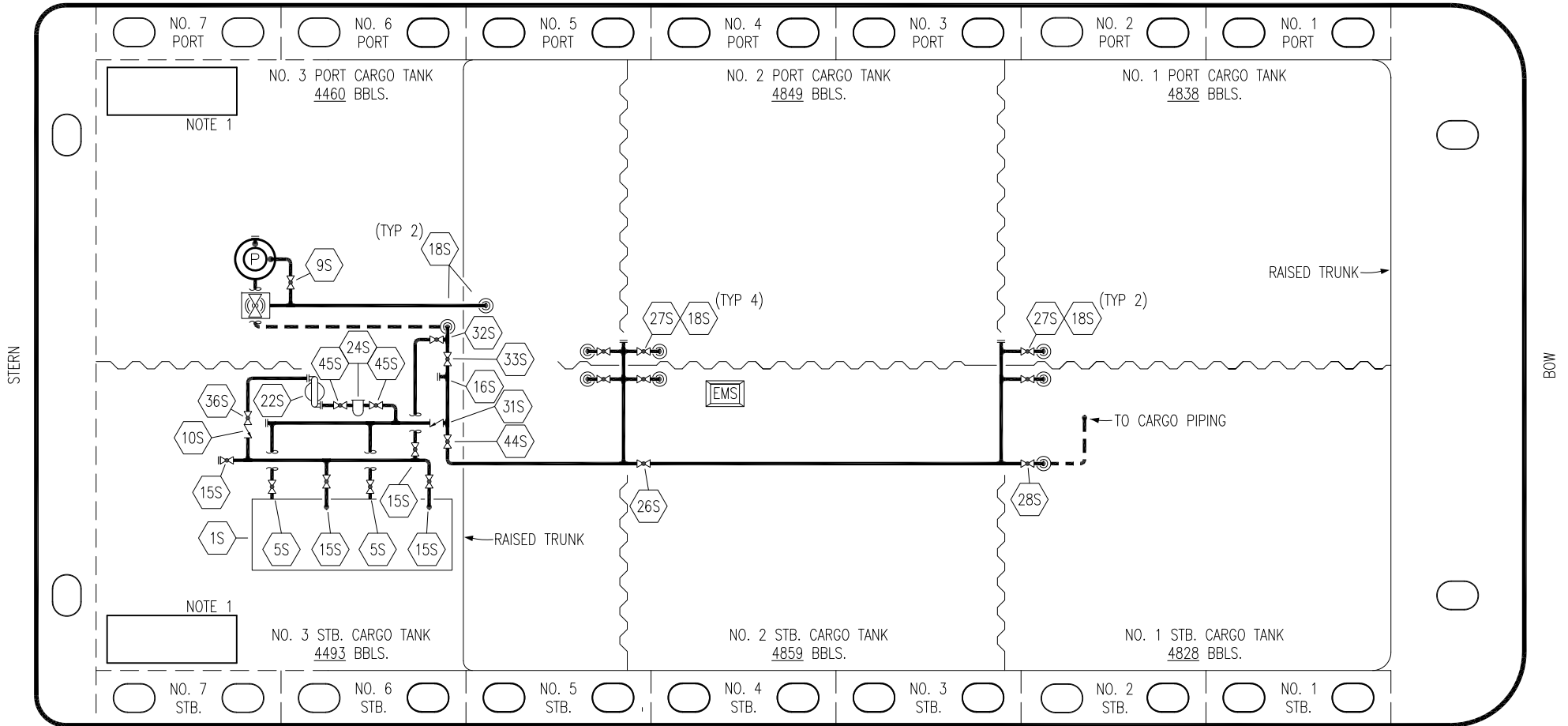
NOTE 1: CONTAINMENT P/S

					<b>KIRBY INLAND MARINE</b> 
<b>VAPOR PIPING FLOW DIAGRAM</b>					
0	02/25/19	MRV	DDA	ISSUED FOR APPROVAL	
REV.	DATE	BY	CHK	APP	

SCALE: NONE	HTCO 3118	REV. <b>0</b>
PAGE: 2 OF 3		

TRINITY

PORT



- |           |                              |           |                              |
|-----------|------------------------------|-----------|------------------------------|
| <b>NO</b> | <b>DESCRIPTION</b>           | <b>NO</b> | <b>DESCRIPTION</b>           |
| 1S        | SLOP TANK                    | 27S       | SUMP SUCTION VALVE           |
| 5S        | SLOP TANK SUCTION VALVE      | 28S       | CARGO PIPING SUCTION         |
| 9S        | BURP VALVE                   | 31S       | CHECK VALVE                  |
| 10S       | STRIPPING PUMP CHECK VALVE   | 32S       | PUMP WELL PRIMER VALVE       |
| 15S       | DISCHARGE VALVE              | 33S       | PUMP WELL SUCTION            |
| 16S       | REMOTE SUCTION CONNECTION    | 36S       | STRIPPING PUMP DISCHARGE     |
| 18S       | TYP. STRIPPING PENETRATION   | 44S       | STRIPPING PUMP SUCTION       |
| 22S       | STRIPPING PUMP               | 45S       | STRIPPING PUMP SUCTION VALVE |
| 24S       | BASKET STRAINER              | —         | — ABOVE DECK PIPING          |
| 26S       | STRIPPING HEADER BLOCK VALVE | - - -     | - - - BELOW DECK PIPING      |

NOTE 1: CONTAINMENT P/S

0	02/25/19	MRV	DDA	ISSUED FOR APPROVAL
REV.	DATE	BY	CHK	APP
				REVISION DESCRIPTION

TRINITY

**KIRBY INLAND MARINE**

**STRIPPING  
PIPING FLOW DIAGRAM**

SCALE: NONE	<b>HTCO 3118</b>	REV. <b>0</b>
PAGE: 3 OF 3		