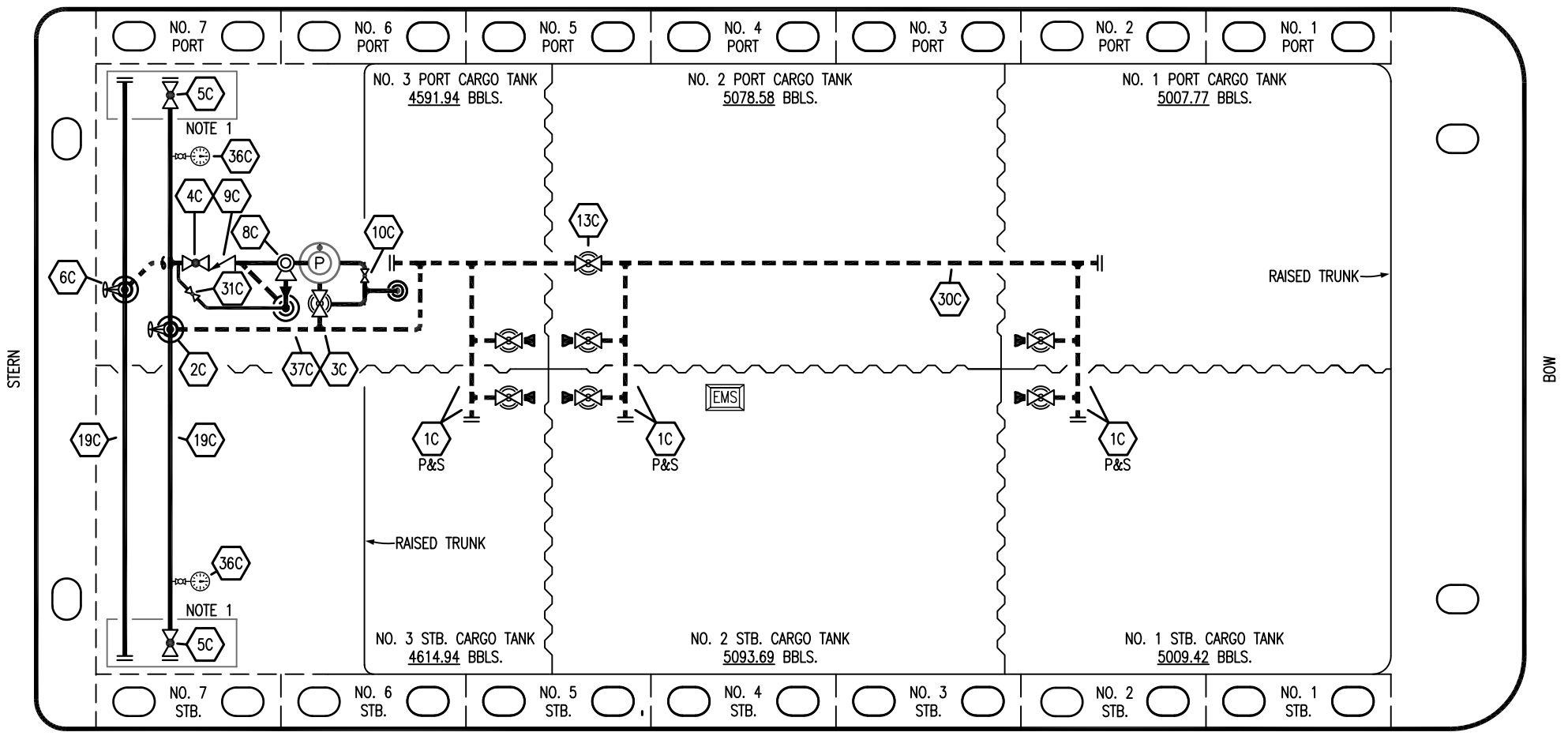



PORT




STARBOARD

- |     |                      |       |  |
|-----|----------------------|-------|--|
| NO  | DESCRIPTION          | NO    | DESCRIPTION  |
| 1C  | CARGO TANK VALVE     | 13C   | CARGO PIPING BLOCK VALVE   |
| 2C  | LOAD VALVE           | 19C   | CARGO HEADER   |
| 3C  | MASTER SUCTION VALVE | 30C   | CARGO PIPELINE   |
| 4C  | DISCHARGE VALVE      | 31C   | BYPASS VALVE   |
| 5C  | HEADER VALVE         | 36C   | PRESSURE GAUGE   |
| 6C  | SALVAGE VALVE        | 37C   | CARGO DROP  |
| 8C  | RELIEF VALVE         | —     | ABOVE DECK PIPING  |
| 9C  | CHECK VALVE          | - - - | BELOW DECK PIPING  |
| 10C | BURP VALVE           |       |  |

NOTE 1: CONTAINMENT P/S

REV.	DATE	BY	CHK	APP	REVISION DESCRIPTION
1	03/21/24	AC	DDA	FIX	REVISED PER CLIENT COMMENTS
0	03/27/19	MRV	DDA		ISSUED FOR APPROVAL

TRINITY

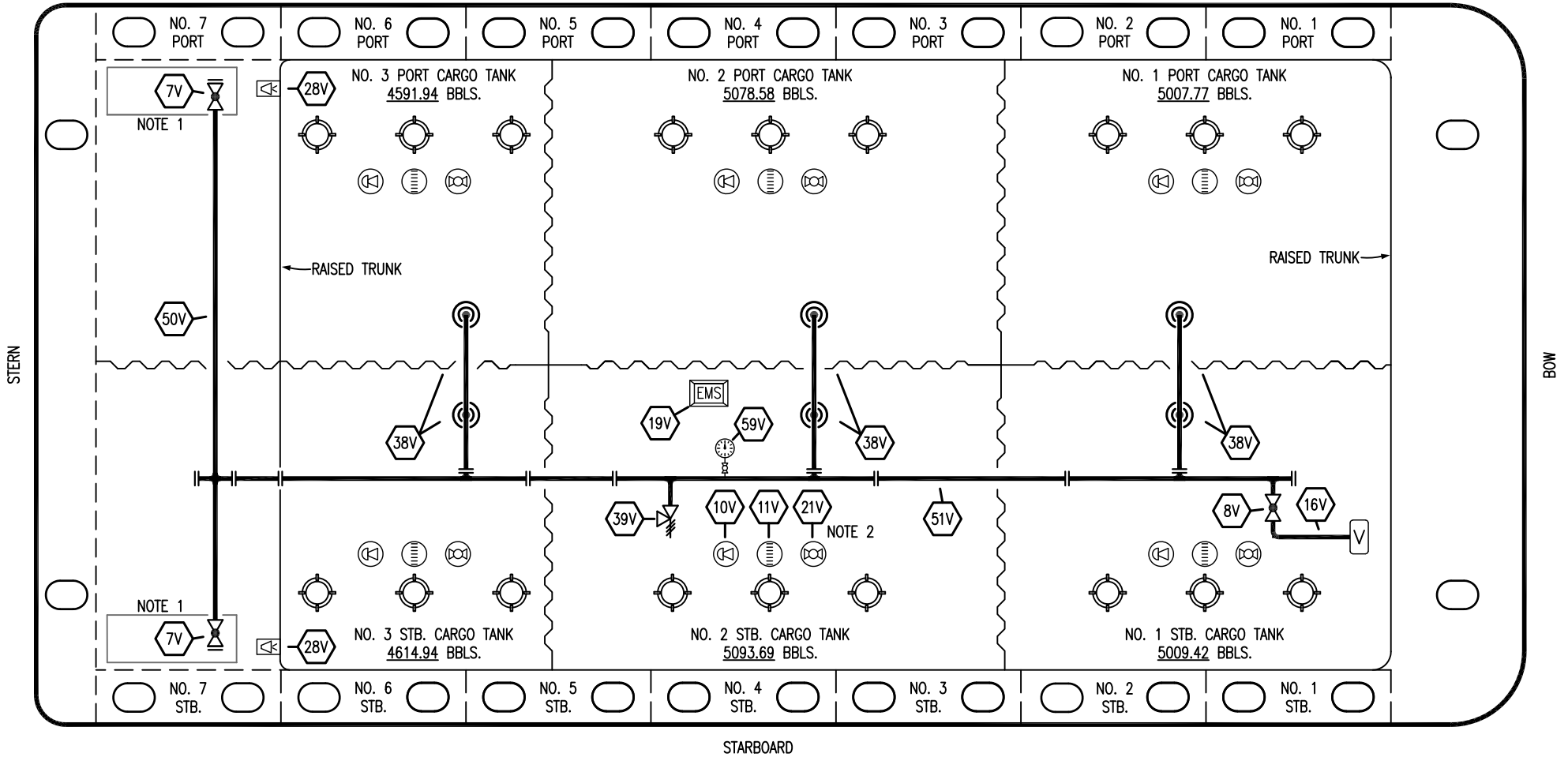
**KIRBY INLAND MARINE** 

**CARGO  
PIPING FLOW DIAGRAM**

**HTCO 3117**

SCALE: NONE	REV. 1
PAGE: 1 OF 3	

PORT



STARBOARD

- |     |                            |     |                       |
|-----|----------------------------|-----|-----------------------|
| NO  | DESCRIPTION                | NO  | DESCRIPTION           |
| 7V  | HEADER VALVE               | 28V | DOCK CONNECTION ALARM |
| 8V  | VENT STACK VALVE           | 38V | VAPOR PENETRATION     |
| 10V | HIGH LEVEL/OVERFILL ALARM  | 39V | PRESSURE/VACUUM VALVE |
| 11V | 1-METER GAUGE STICK        | 50V | VAPOR HEADER          |
| 16V | VAPOR VENT STACK           | 51V | VAPOR PIPELINE        |
| 19V | EMERGENCY ENGINE SHUT DOWN | 59V | PRESS/VAC GAUGE       |
| 21V | HERMETIC GAUGE             | —   | ABOVE DECK PIPING     |

NOTE 2: TYPICAL RIGGING IN EACH TANK  
 NOTE 1: CONTAINMENT P/S

TRINITY

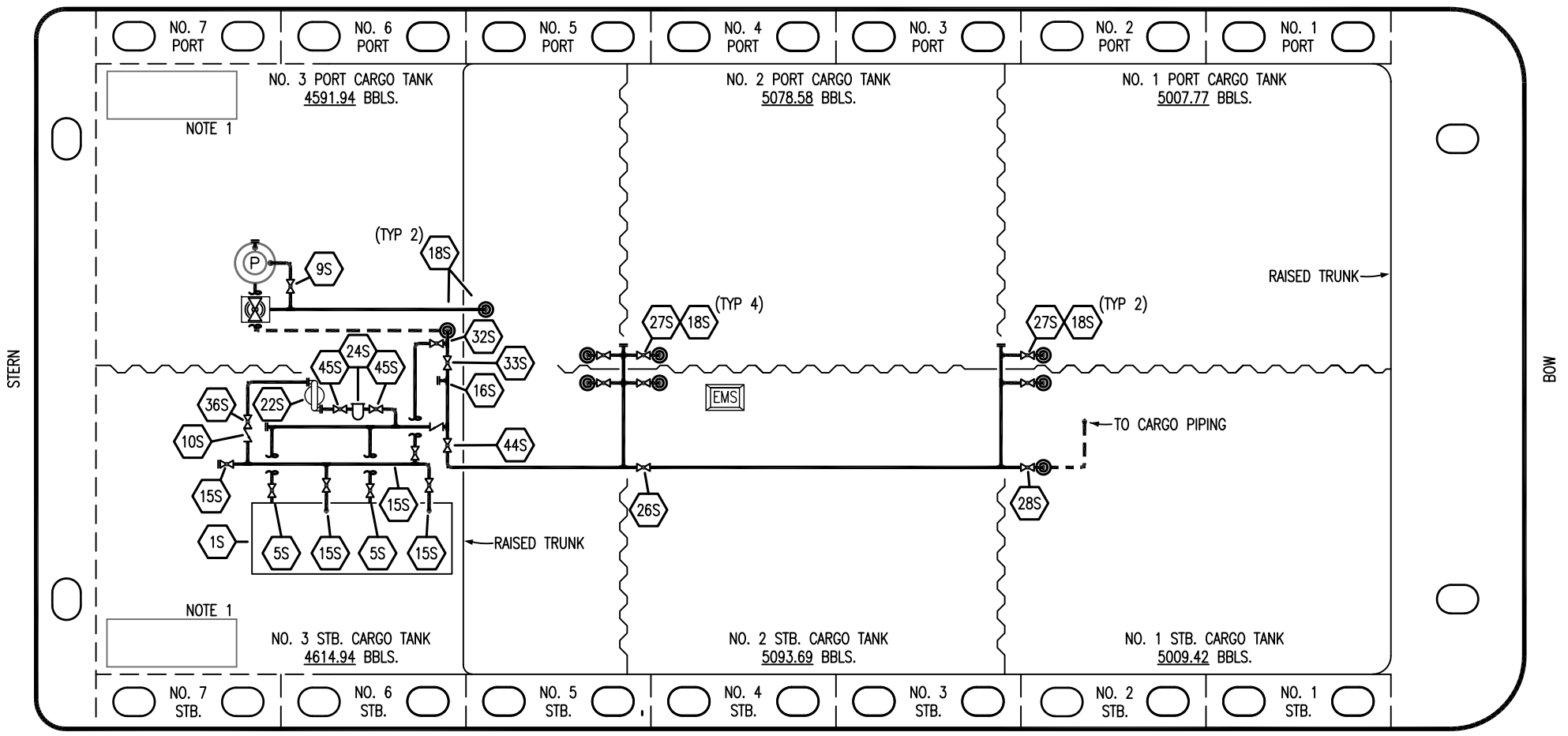
REV.	DATE	BY	CHK	APP	REVISION DESCRIPTION
1	03/21/24	AC	DDA	FIX	REVISED PER CLIENT COMMENTS
0	03/27/19	MRV	DDA		ISSUED FOR APPROVAL

KIRBY INLAND MARINE

VAPOR  
PIPING FLOW DIAGRAM

SCALE: NONE	HTCO 3117	REV. 1
PAGE: 2 OF 3		

PORT



- |     |                                |
|-----|--------------------------------|
| NO  | DESCRIPTION                    |
| 1S  | SLOP TANK                      |
| 5S  | SLOP TANK SUCTION VALVE        |
| 9S  | BURP VALVE                     |
| 10S | STRIPPING PUMP CHECK VALVE     |
| 15S | DISCHARGE VALVE                |
| 16S | REMOTE SUCTION CONNECTION      |
| 18S | TYP. STRIPPING PENETRATION (⊙) |
| 22S | STRIPPING PUMP                 |
| 24S | BASKET STRAINER                |

- |       |                              |
|-------|------------------------------|
| NO    | DESCRIPTION                  |
| 26S   | STRIPPING HEADER BLOCK VALVE |
| 27S   | SUMP SUCTION VALVE           |
| 28S   | CARGO PIPING SUCTION         |
| 32S   | PUMP WELL PRIMER VALVE       |
| 33S   | PUMP WELL SUCTION            |
| 36S   | STRIPPING PUMP DISCHARGE     |
| 44S   | STRIPPING PUMP SUCTION       |
| 45S   | STRIPPING PUMP SUCTION VALVE |
| —     | ABOVE DECK PIPING            |
| - - - | BELOW DECK PIPING            |

NOTE 1: CONTAINMENT P/S

REV.	DATE	BY	CHK	APP	REVISION DESCRIPTION
1	03/21/24	AC	DDA	FIX	REVISED PER CLIENT COMMENTS
0	03/27/19	MRV	DDA		ISSUED FOR APPROVAL

TRINITY

**KIRBY INLAND MARINE**

**STRIPPING  
PIPING FLOW DIAGRAM**

SCALE: NONE	<b>HTCO 3117</b>
PAGE: 3 OF 3	REV. <b>1</b>