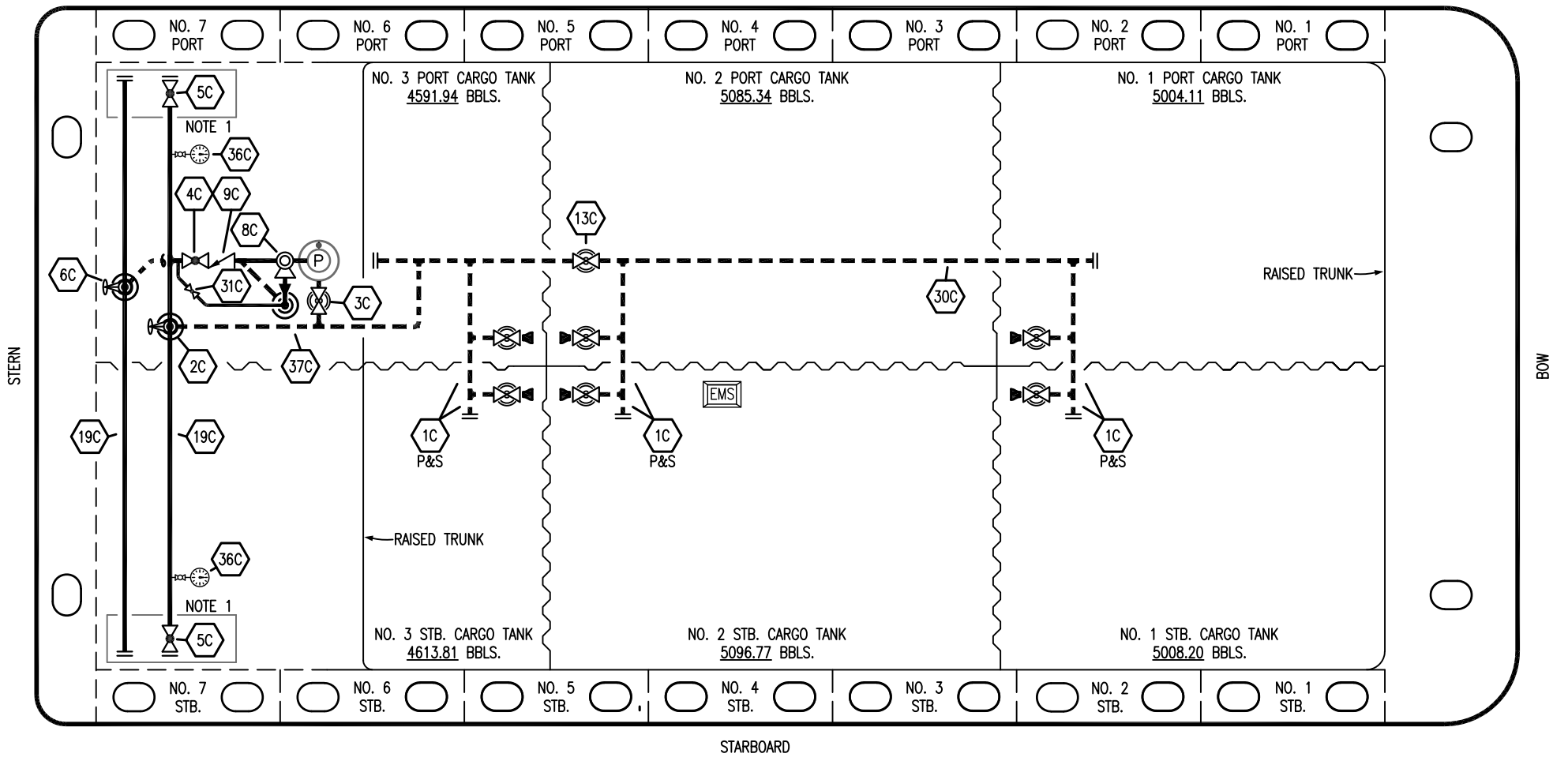





PORT




STARBOARD

- | | | | |
|----|----------------------|---|--|
| NO | DESCRIPTION | NO | DESCRIPTION |
| 1C | CARGO TANK VALVE | 13C | CARGO PIPING BLOCK VALVE |
| 2C | LOAD VALVE | 19C | CARGO HEADER |
| 3C | MASTER SUCTION VALVE | 30C | CARGO PIPELINE |
| 4C | DISCHARGE VALVE | 31C | BYPASS VALVE |
| 5C | HEADER VALVE | 36C | PRESSURE GAUGE |
| 6C | SALVAGE VALVE | 37C | CARGO DROP  |
| 8C | RELIEF VALVE |  | ABOVE DECK PIPING |
| 9C | CHECK VALVE |  | BELOW DECK PIPING |

NOTE 1: CONTAINMENT P/S

REV.	DATE	BY	CHK	APP	REVISION DESCRIPTION
1	03/13/24	AC	DDA	FIX	REVISED PER CLIENTS COMMENTS
0	11/26/18	MRV	DDA		ISSUED FOR APPROVAL

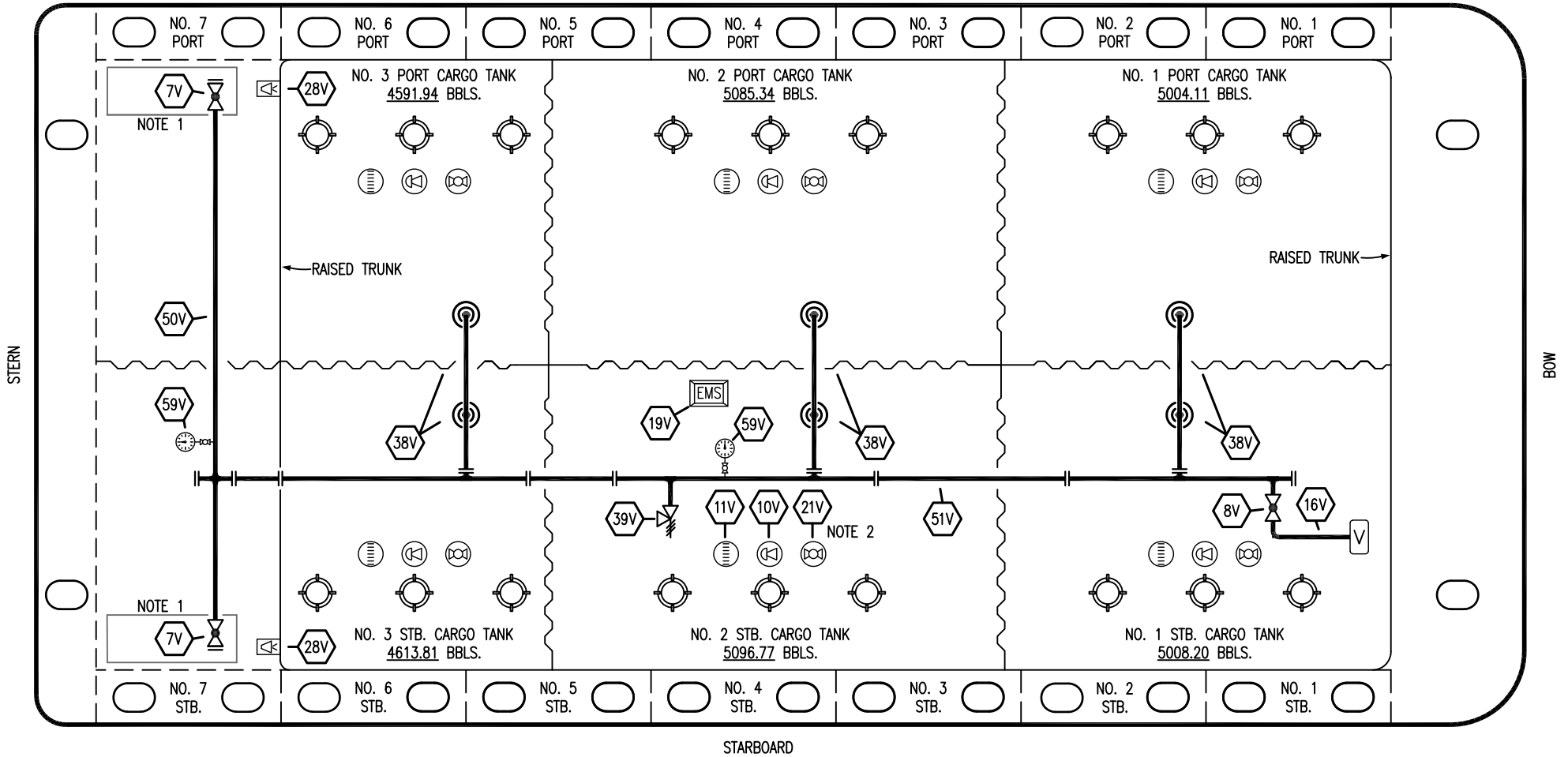
TRINITY

KIRBY INLAND MARINE 

**CARGO
PIPING FLOW DIAGRAM**

SCALE: NONE	HTCO 3109
PAGE: 1 OF 3	REV. 1

PORT



STARBOARD

- | | | | |
|-----|----------------------------|-----|-----------------------|
| NO | DESCRIPTION | NO | DESCRIPTION |
| 7V | HEADER VALVE | 28V | DOCK CONNECTION ALARM |
| 8V | VENT STACK VALVE | 38V | VAPOR PENETRATION |
| 10V | HIGH LEVEL/OVERFILL ALARM | 39V | PRESSURE/VACUUM VALVE |
| 11V | 1-METER GAUGE STICK | 50V | VAPOR HEADER |
| 16V | VAPOR VENT STACK | 51V | VAPOR PIPELINE |
| 19V | EMERGENCY ENGINE SHUT DOWN | 59V | PRESS/VAC GAUGE |
| 21V | HERMETIC GAUGE | — | ABOVE DECK PIPING |

NOTE 2: TYPICAL RIGGING IN EACH TANK
NOTE 1: CONTAINMENT P/S

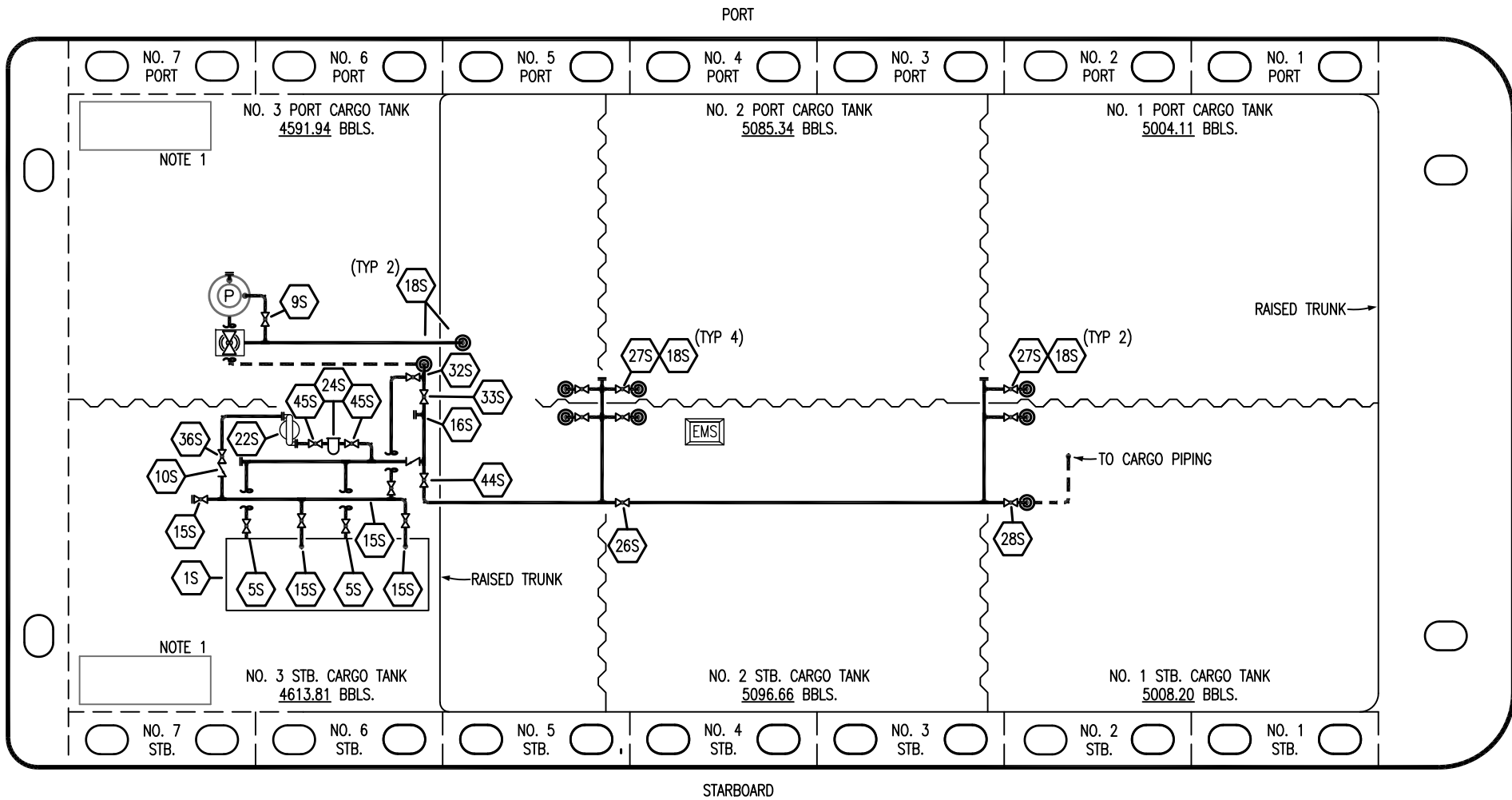
REV.	DATE	BY	CHK	APP	REVISION DESCRIPTION
1	03/13/24	AC	DDA	FIX	REVISED PER CLIENTS COMMENTS
0	11/26/18	MRV	DDA		ISSUED FOR APPROVAL

TRINITY

KIRBY INLAND MARINE

**VAPOR
PIPING FLOW DIAGRAM**

SCALE: NONE	HTCO 3109	REV. 1
PAGE: 2 OF 3		




- | | |
|-----|--------------------------------|
| NO | DESCRIPTION |
| 1S | SLOP TANK |
| 5S | SLOP TANK SUCTION VALVE |
| 9S | BURP VALVE |
| 10S | STRIPPING PUMP CHECK VALVE |
| 15S | DISCHARGE VALVE |
| 16S | REMOTE SUCTION CONNECTION |
| 18S | TYP. STRIPPING PENETRATION (⊙) |
| 22S | STRIPPING PUMP |
| 24S | BASKET STRAINER |

- | | |
|-------|------------------------------|
| NO | DESCRIPTION |
| 26S | STRIPPING HEADER BLOCK VALVE |
| 27S | SUMP SUCTION VALVE |
| 28S | CARGO PIPING SUCTION |
| 32S | PUMP WELL PRIMER VALVE |
| 33S | PUMP WELL SUCTION |
| 36S | STRIPPING PUMP DISCHARGE |
| 44S | STRIPPING PUMP SUCTION |
| 45S | STRIPPING PUMP SUCTION VALVE |
| — | ABOVE DECK PIPING |
| - - - | BELOW DECK PIPING |

NOTE 1: CONTAINMENT P/S

REV.	DATE	BY	CHK	APP	REVISION DESCRIPTION
1	03/13/24	AC	DDA	FIX	REVISED PER CLIENTS COMMENTS
0	11/26/18	MRV	DDA		ISSUED FOR APPROVAL

TRINITY



KIRBY INLAND MARINE

STRIPPING PIPING FLOW DIAGRAM

HTCO 3109

SCALE: NONE	REV. 1
PAGE: 3 OF 3	