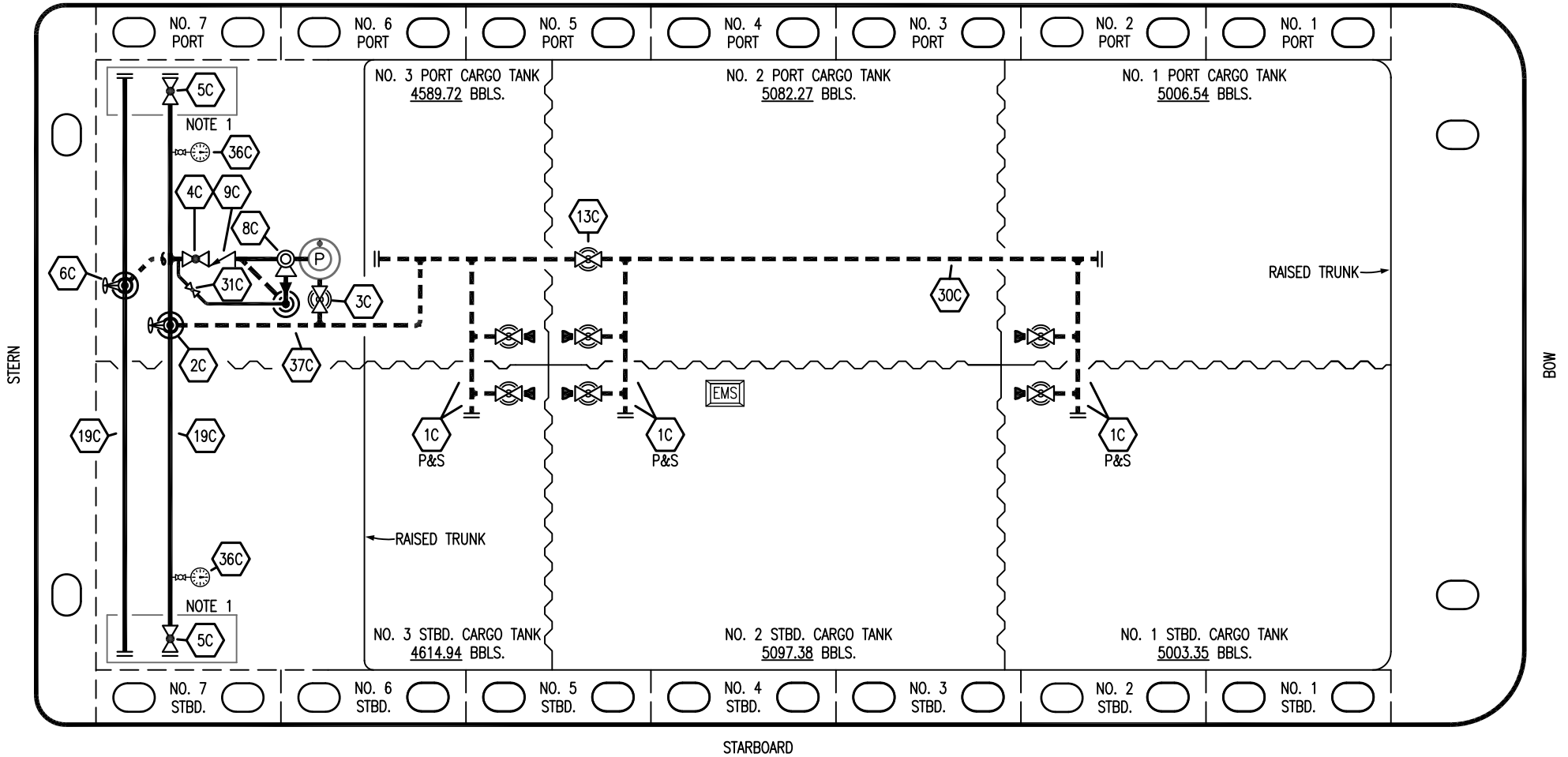


PORT



STARBOARD

- | | | | |
|----|----------------------|-------|--------------------------|
| NO | DESCRIPTION | NO | DESCRIPTION |
| 1C | CARGO TANK VALVE | 13C | CARGO PIPING BLOCK VALVE |
| 2C | LOAD VALVE | 19C | CARGO HEADER |
| 3C | MASTER SUCTION VALVE | 30C | CARGO PIPELINE |
| 4C | DISCHARGE VALVE | 31C | BYPASS VALVE |
| 5C | HEADER VALVE | 36C | PRESSURE GAUGE |
| 6C | SALVAGE VALVE | 37C | CARGO DROP |
| 8C | RELIEF VALVE | — | ABOVE DECK PIPING |
| 9C | CHECK VALVE | - - - | BELOW DECK PIPING |

NOTE 1: CONTAINMENT P/S

REV.	DATE	BY	CHK	APP	REVISION DESCRIPTION
2	09/14/23	MRV	DDA	MW	REVISED PER CLIENT COMMENTS
1	09/24/18	WFB	DDA		REVISED PER CLIENT COMMENTS
0	09/21/18	WFB	DDA		ISSUED FOR APPROVAL

TRINITY

KIRBY INLAND MARINE

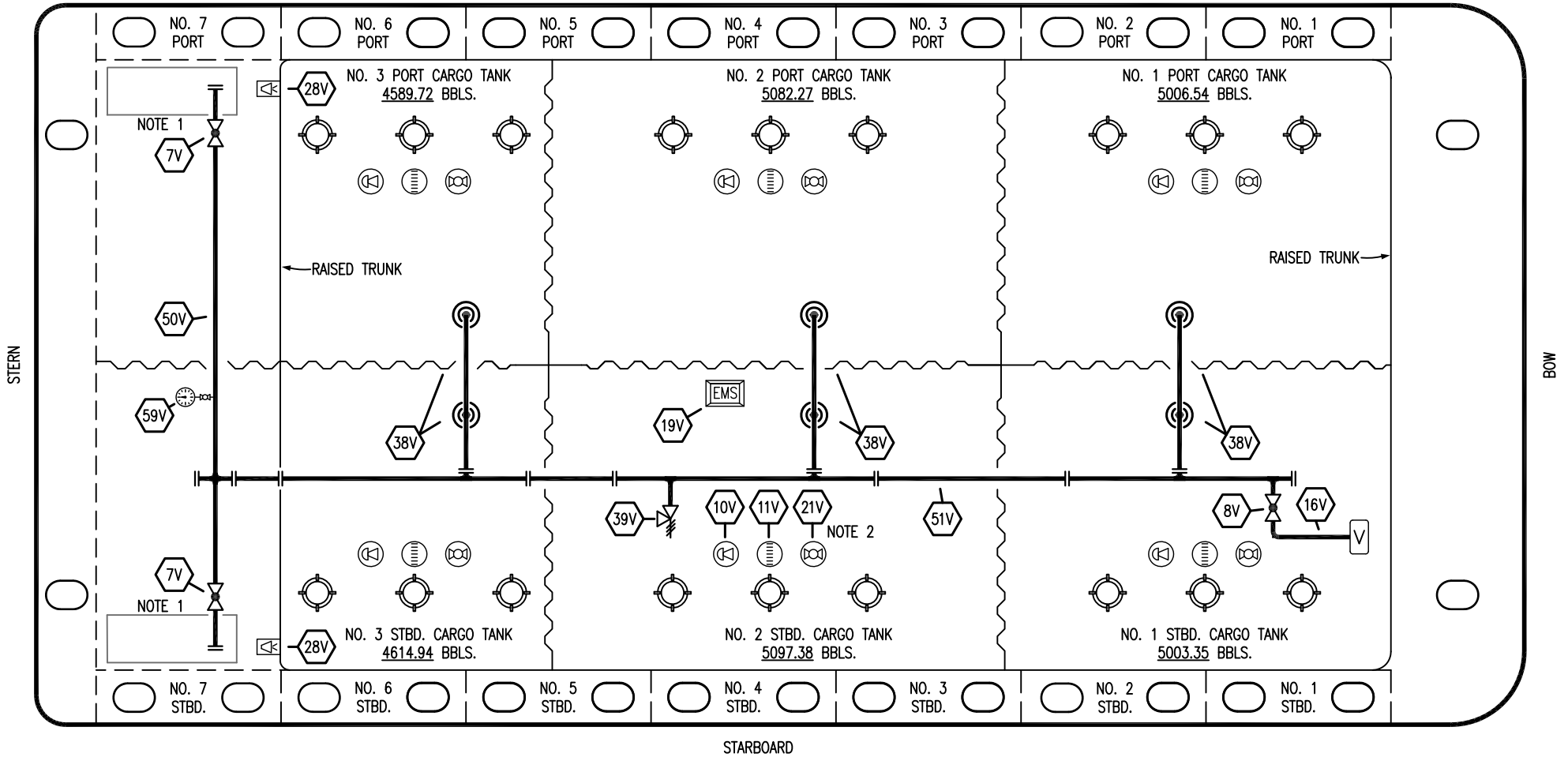
CARGO

PIPING FLOW DIAGRAM

HTCO 3100

SCALE: NONE	REV. 2
PAGE: 1 OF 3	

PORT



STARBOARD

NO	DESCRIPTION	NO	DESCRIPTION
7V	HEADER VALVE	28V	DOCK CONNECTION ALARM
8V	VENT STACK VALVE	38V	VAPOR PENETRATION
10V	HIGH LEVEL/OVERFILL ALARM	39V	PRESSURE/VACUUM VALVE
11V	1-METER GAUGE STICK	50V	VAPOR HEADER
16V	VAPOR VENT STACK	51V	VAPOR PIPELINE
19V	EMERGENCY ENGINE SHUT DOWN	59V	PRESS/VAC GAUGE
21V	HERMETIC GAUGE	—	ABOVE DECK PIPING

NOTE 2: TYPICAL RIGGING IN EACH TANK

NOTE 1: CONTAINMENT P/S

TRINITY

REV.	DATE	BY	CHK	APP	REVISION DESCRIPTION
2	09/14/23	MRV	DDA	MW	REVISED PER CLIENT COMMENTS
1	09/24/18	WFB	DDA		REVISED PER CLIENT COMMENTS
0	09/21/18	WFB	DDA		ISSUED FOR APPROVAL

KIRBY INLAND MARINE 

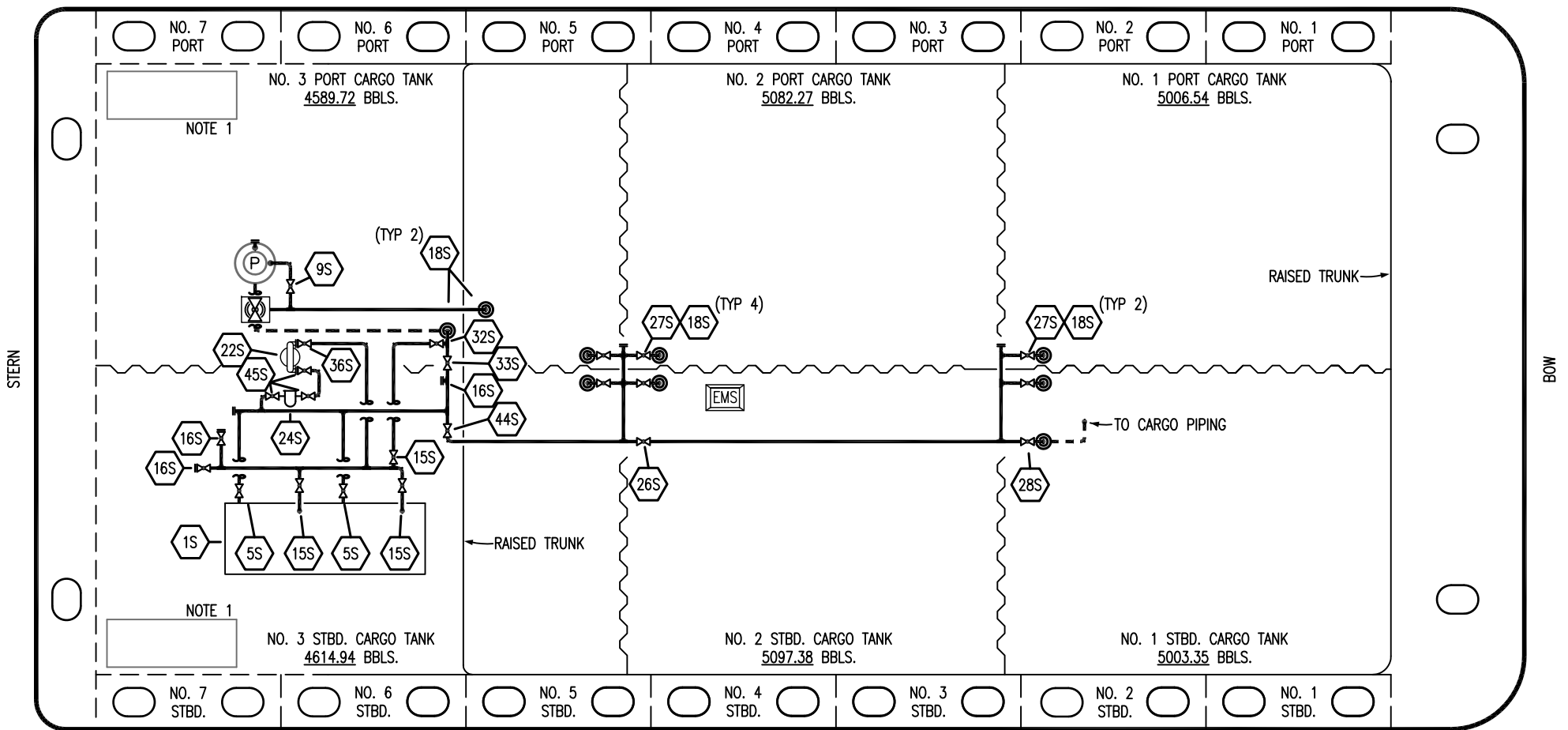
**VAPOR
PIPING FLOW DIAGRAM**

SCALE: NONE
PAGE: 2 OF 3

HTCO 3100

REV. **2**

PORT



STERN

BOW

STARBOARD

- | | | | |
|-----|------------------------------|-----|------------------------------|
| NO | DESCRIPTION | NO | DESCRIPTION |
| 1S | SLOP TANK | 27S | SUMP SUCTION VALVE |
| 5S | SLOP TANK SUCTION VALVE | 28S | CARGO PIPING SUCTION |
| 9S | BURP VALVE | 32S | PUMP WELL PRIMER VALVE |
| 10S | STRIPPING PUMP CHECK VALVE | 33S | PUMP WELL SUCTION |
| 15S | DISCHARGE VALVE | 36S | STRIPPING PUMP DISCHARGE |
| 16S | REMOTE SUCTION CONNECTION | 44S | STRIPPING PUMP SUCTION |
| 18S | TYP. STRIPPING PENETRATION | 45S | STRIPPING PUMP SUCTION VALVE |
| 22S | STRIPPING PUMP | | ABOVE DECK PIPING |
| 24S | BASKET STRAINER | | BELOW DECK PIPING |
| 26S | STRIPPING HEADER BLOCK VALVE | | |

NOTE 1: CONTAINMENT P/S

REV.	DATE	BY	CHK	APP	REVISION DESCRIPTION
2	09/14/23	MRV	DDA	MW	REVISED PER CLIENT COMMENTS
1	09/24/18	WFB	DDA		REVISED PER CLIENT COMMENTS
0	09/21/18	WFB	DDA		ISSUED FOR APPROVAL

TRINITY

KIRBY INLAND MARINE

STRIPPING PIPING FLOW DIAGRAM

SCALE: NONE	HTCO 3100
PAGE: 3 OF 3	REV. 2