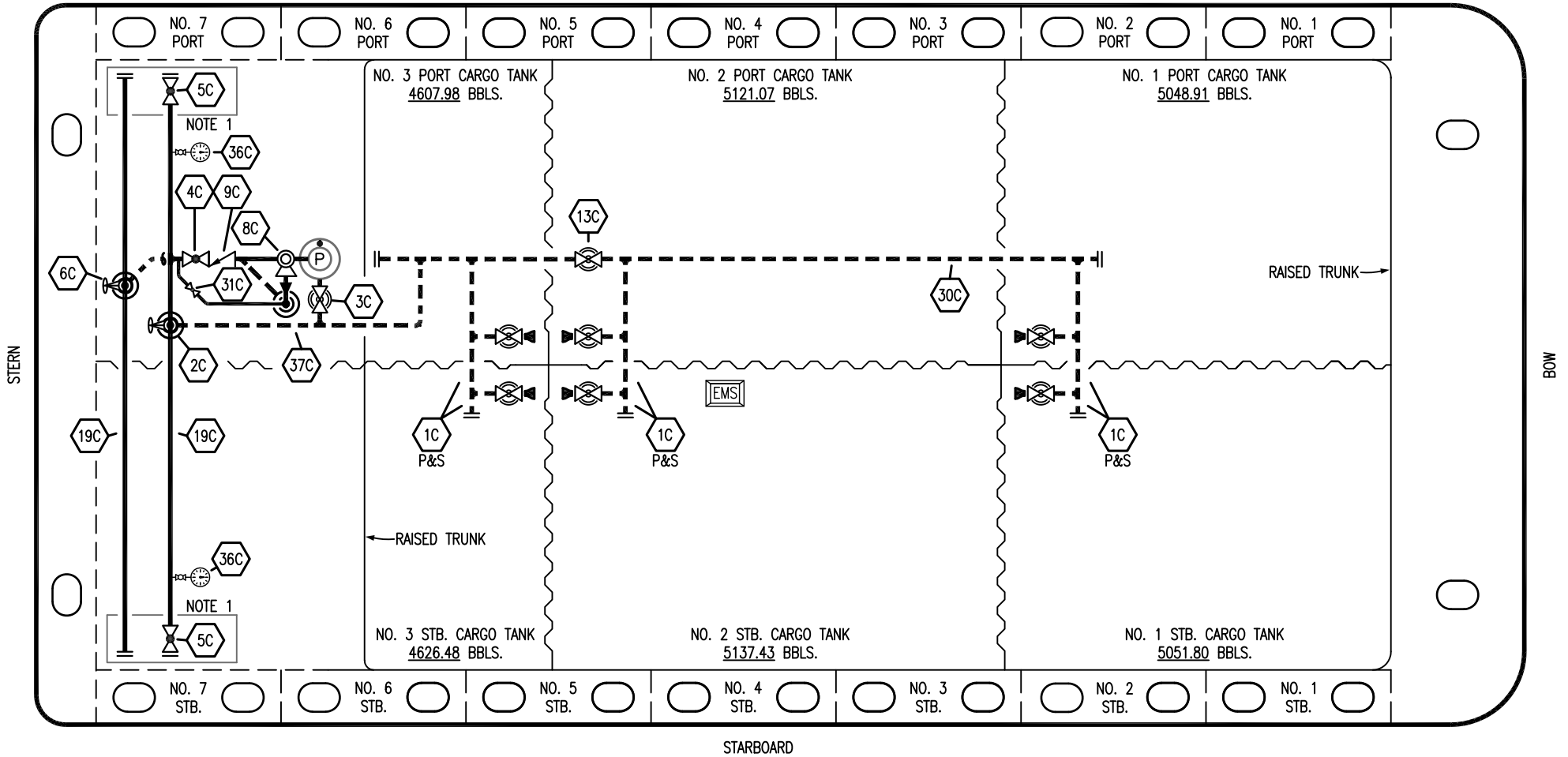


PORT



STARBOARD

- |    |                      |         |                          |
|----|----------------------|---------|--------------------------|
| NO | DESCRIPTION          | NO      | DESCRIPTION              |
| 1C | CARGO TANK VALVE     | 13C     | CARGO PIPING BLOCK VALVE |
| 2C | LOAD VALVE           | 19C     | CARGO HEADER             |
| 3C | MASTER SUCTION VALVE | 30C     | CARGO PIPELINE           |
| 4C | DISCHARGE VALVE      | 31C     | BYPASS VALVE             |
| 5C | HEADER VALVE         | 36C     | PRESSURE GAUGE           |
| 6C | SALVAGE VALVE        | 37C     | CARGO DROP               |
| 8C | RELIEF VALVE         | ————    | ABOVE DECK PIPING        |
| 9C | CHECK VALVE          | - - - - | BELOW DECK PIPING        |

NOTE 1: CONTAINMENT P/S

REV.	DATE	BY	CHK	APP	REVISION DESCRIPTION
2	12/12/22	MRV	DDA	DL	REVISED PER CLIENT COMMENTS
1	07/10/18	WFB	DDA		REVISED PER CLIENT COMMENTS
0	05/11/18	WFB	DDA		ISSUED FOR APPROVAL

TRINITY

**KIRBY INLAND MARINE**

**CARGO**

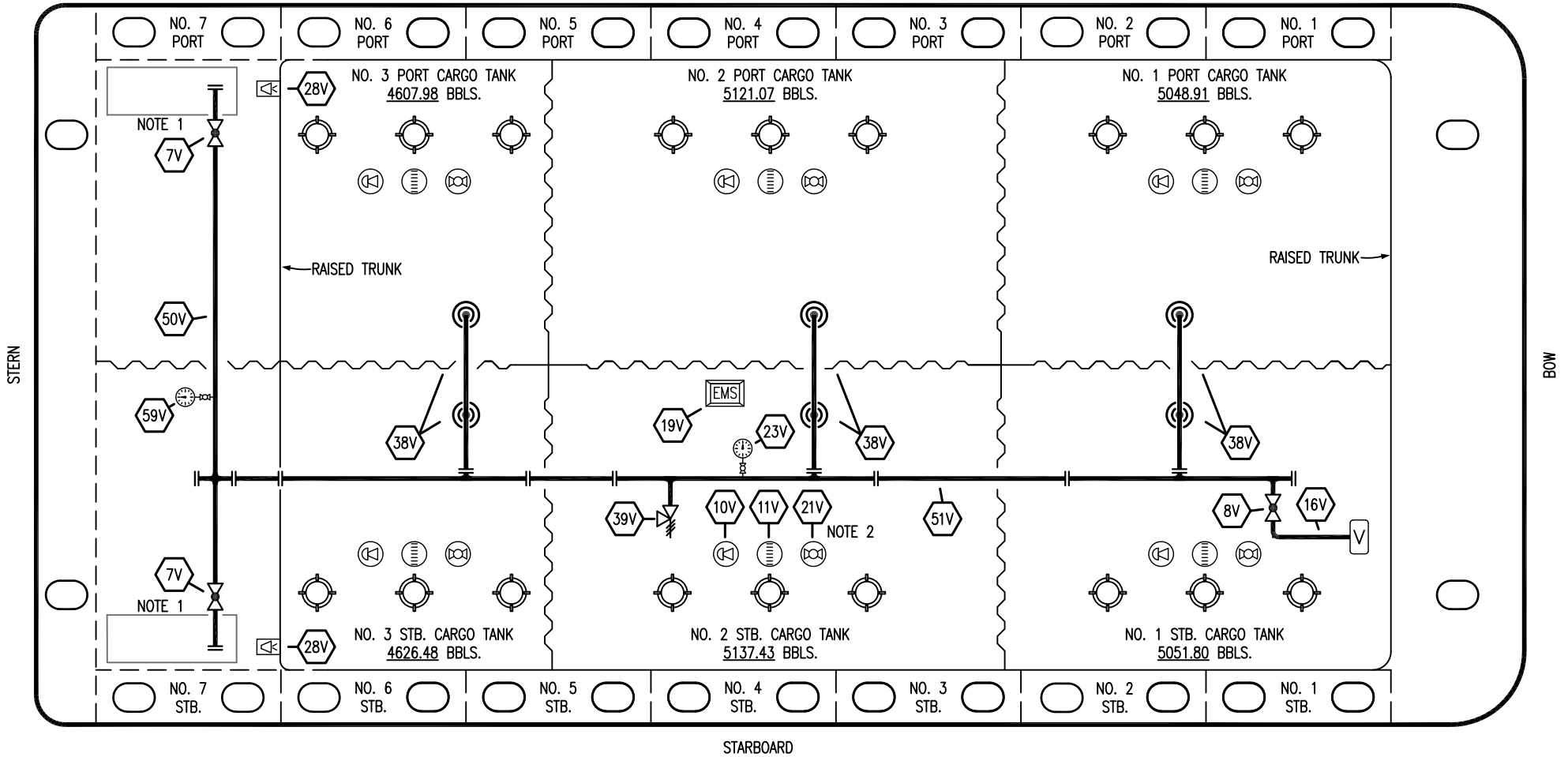
**PIPING FLOW DIAGRAM**

**HTCO 3091**

SCALE: NONE  
PAGE: 1 OF 3

**REV. 2**

PORT



STARBOARD

- |     |                            |     |                       |
|-----|----------------------------|-----|-----------------------|
| NO  | DESCRIPTION                | NO  | DESCRIPTION           |
| 7V  | 8" HEADER VALVE            | 28V | DOCK CONNECTION ALARM |
| 8V  | 8" VENT STACK VALVE        | 38V | 8" VAPOR PENETRATION  |
| 10V | HIGH LEVEL/OVERFILL ALARM  | 39V | PRESSURE/VACUUM VALVE |
| 11V | 1-METER GAUGE STICK        | 50V | 8" VAPOR HEADER       |
| 16V | VAPOR VENT STACK           | 51V | 8" VAPOR PIPELINE     |
| 19V | EMERGENCY ENGINE SHUT DOWN | 59V | PRESS/VAC GAUGE       |
| 21V | 2" HERMETIC GAUGE          | —   | ABOVE DECK PIPING     |
| 23V | PRESSURE GAUGE             |     |                       |

NOTE 2: TYPICAL RIGGING IN EACH TANK  
 NOTE 1: CONTAINMENT P/S

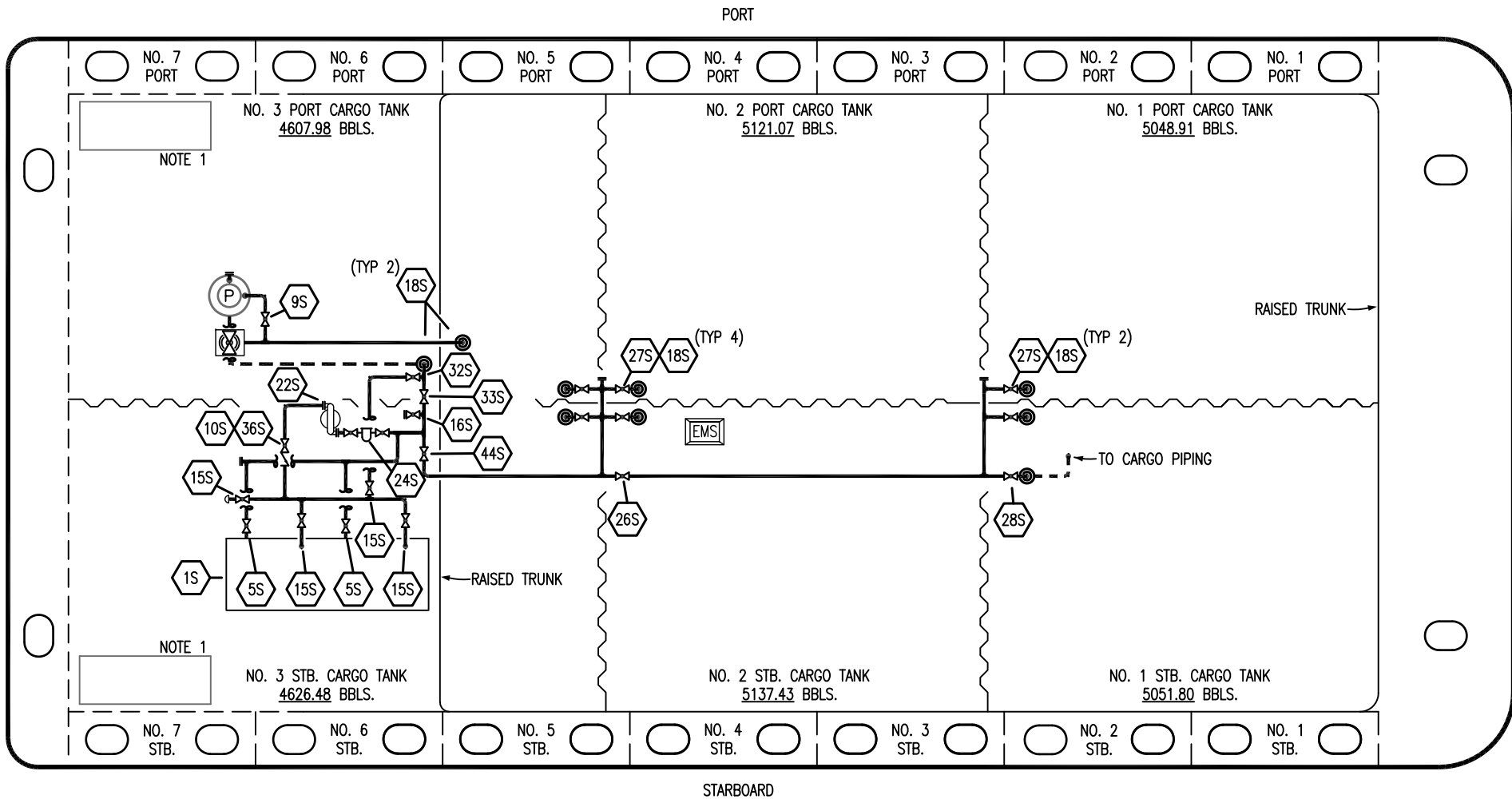
REV.	DATE	BY	CHK	APP	REVISION DESCRIPTION
1	12/12/22	MRV	DDA	DL	REVISED PER CLIENT COMMENTS
0	05/11/18	WFB	DDA		ISSUED FOR APPROVAL

TRINITY

**KIRBY INLAND MARINE**

**VAPOR  
PIPING FLOW DIAGRAM**

<b>HTCO 3091</b>	REV. <b>1</b>
SCALE: NONE	PAGE: 2 OF 3



NO	DESCRIPTION	NO	DESCRIPTION
1S	SLOP TANK	26S	STRIPPING HEADER BLOCK VALVE
5S	SLOP TANK SUCTION VALVE	27S	SUMP SUCTION VALVE
9S	BURP VALVE	28S	CARGO PIPING SUCTION
10S	STRIPPING PUMP CHECK VALVE	32S	PUMP WELL PRIMER VALVE
15S	DISCHARGE VALVE	33S	PUMP WELL SUCTION
16S	REMOTE SUCTION CONNECTION	36S	STRIPPING PUMP DISCHARGE
18S	TYP. STRIPPING PENETRATION (⊙)	44S	STRIPPING PUMP SUCTION
22S	STRIPPING PUMP	—	ABOVE DECK PIPING
24S	BASKET STRAINER	- - -	BELOW DECK PIPING

NOTE 1: CONTAINMENT P/S

REV.	DATE	BY	CHK	APP	REVISION DESCRIPTION
1	12/12/22	MRV	DDA	DL	REVISED PER CLIENT COMMENTS
0	05/11/18	WFB	DDA		ISSUED FOR APPROVAL

TRINITY

**KIRBY INLAND MARINE**

**STRIPPING  
PIPING FLOW DIAGRAM**

<b>HTCO 3091</b>	REV. <b>1</b>
SCALE: NONE	PAGE: 3 OF 3