

| | | | |
|-----|----------------------|-----|--------------------------|
| NO | DESCRIPTION | NO | DESCRIPTION |
| 1C | CARGO TANK VALVE | 13C | CARGO PIPING BLOCK VALVE |
| 2C | LOAD VALVE | 19C | CARGO HEADER |
| 3C | MASTER SUCTION VALVE | 30C | CARGO PIPELINE |
| 4C | DISCHARGE VALVE | 31C | BYPASS VALVE |
| 5C | HEADER VALVE | 36C | PRESSURE GAUGE |
| 7C | PUMP SALVAGE VALVE | 37C | CARGO DROP |
| 8C | RELIEF VALVE | — | — ABOVE DECK PIPING |
| 9C | CHECK VALVE | --- | --- BELOW DECK PIPING |
| 10C | BURP VALVE | | |

NOTE 1: CONTAINMENT P/S

| REV. | DATE | BY | CHK | APP | REVISION DESCRIPTION |
|------|----------|-----|-----|-----|-----------------------------|
| 3 | 03/31/22 | MRV | DDA | JF | RENAMED BARGE TO HTCO 3085 |
| 2 | 02/28/22 | MRV | DDA | CW | REVISED PER CLIENT COMMENTS |
| 1 | 07/10/18 | WFB | DDA | | REVISED PER CLIENT COMMENTS |
| 0 | 05/11/18 | WFB | DDA | | ISSUED FOR APPROVAL |

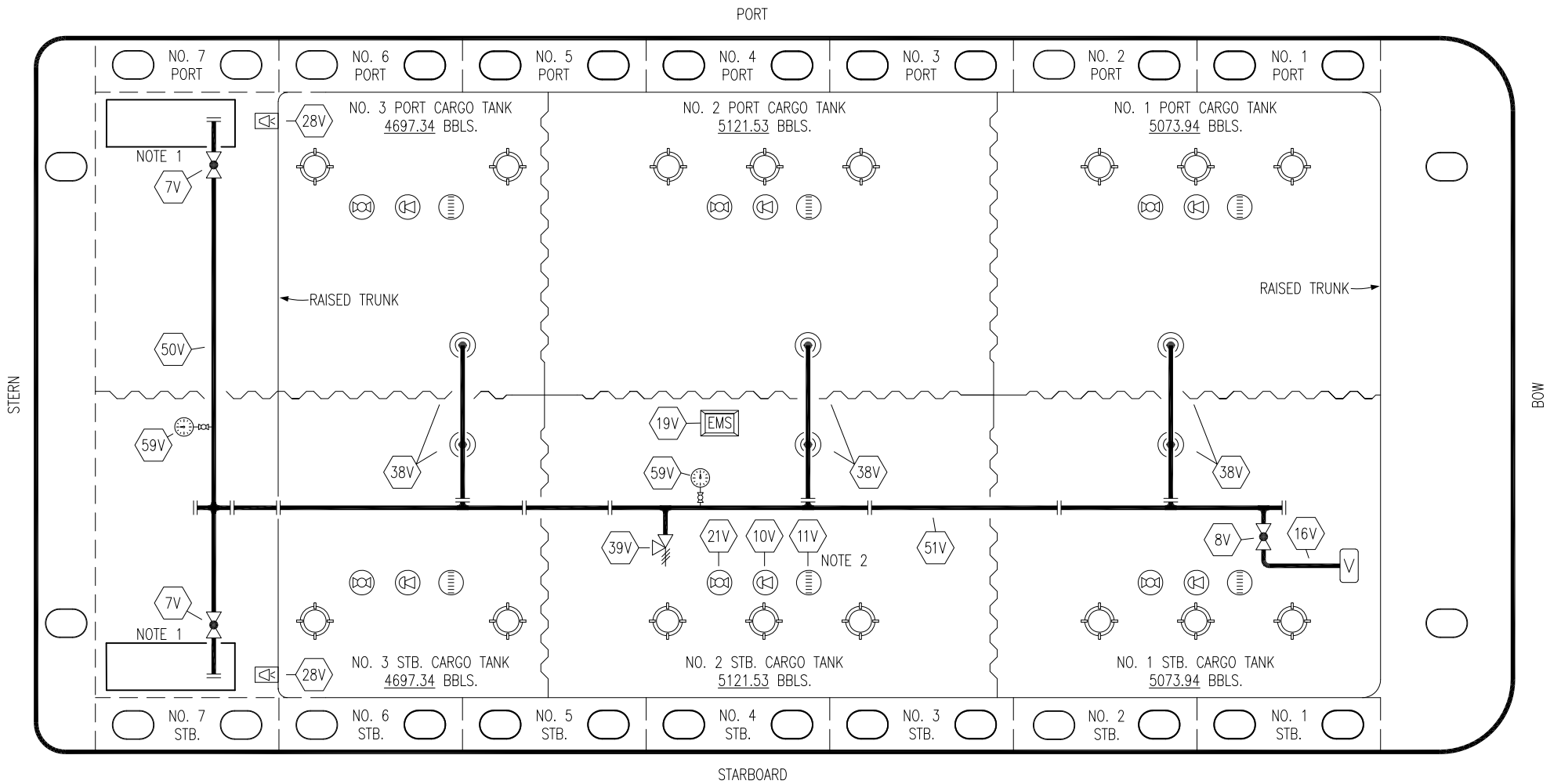
TRINITY

KIRBY INLAND MARINE

CARGO
PIPING FLOW DIAGRAM

HTCO 3085

| | |
|--------------|--------|
| SCALE: NONE | REV. 3 |
| PAGE: 1 OF 3 | |



| NO | DESCRIPTION | NO | DESCRIPTION |
|-----|----------------------------|-----|-----------------------|
| 7V | 8" HEADER VALVE | 28V | DOCK CONNECTION ALARM |
| 8V | 8" VENT STACK VALVE | 38V | 8" VAPOR PENETRATION |
| 10V | HIGH LEVEL/OVERFILL ALARM | 39V | PRESSURE/VACUUM VALVE |
| 11V | 1-METER GAUGE STICK | 50V | 8" VAPOR HEADER |
| 16V | VAPOR VENT STACK | 51V | 8" VAPOR PIPELINE |
| 19V | EMERGENCY ENGINE SHUT DOWN | 59V | PRESS/VAC GAUGE |
| 21V | 2" HERMETIC GAUGE | — | ABOVE DECK PIPING |

NOTE 2: TYPICAL RIGGING IN EACH TANK

NOTE 1: CONTAINMENT P/S

| REV. | DATE | BY | CHK | APP | REVISION DESCRIPTION |
|------|----------|-----|-----|-----|-----------------------------|
| 2 | 03/31/22 | MRV | DDA | JF | RENAMED BARGE TO HTCO 3085 |
| 1 | 02/28/22 | MRV | DDA | CW | REVISED PER CLIENT COMMENTS |
| 0 | 05/11/18 | WFB | DDA | | ISSUED FOR APPROVAL |

KIRBY INLAND MARINE 

**VAPOR
PIPING FLOW DIAGRAM**

HTCO 3085

SCALE: NONE
PAGE: 2 OF 3

TRINITY

REV. **2**

