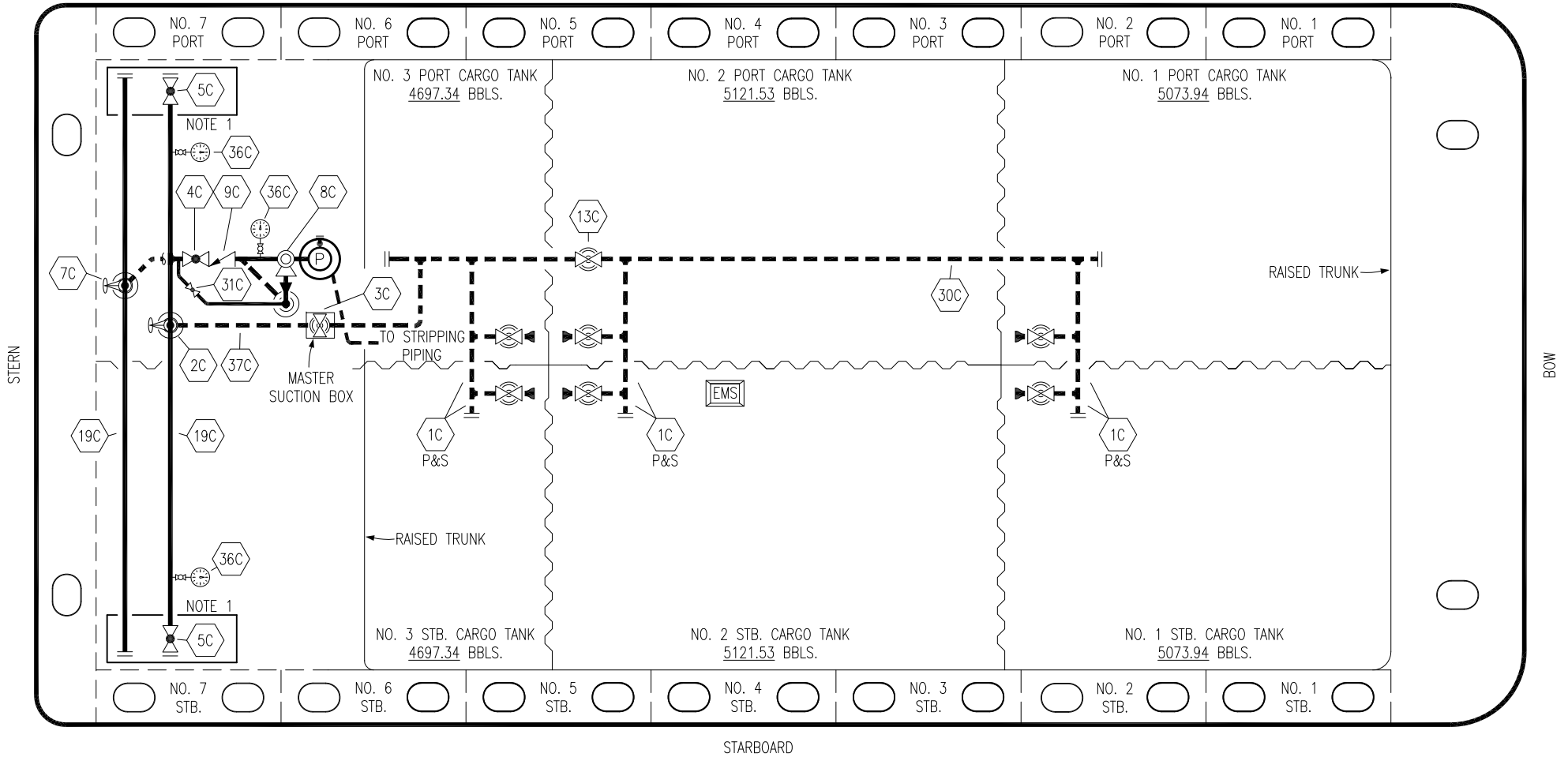


PORT



STERN

BOW

STARBOARD

- |     |                      |     |                          |
|-----|----------------------|-----|--------------------------|
| NO  | DESCRIPTION          | NO  | DESCRIPTION              |
| 1C  | CARGO TANK VALVE     | 13C | CARGO PIPING BLOCK VALVE |
| 2C  | LOAD VALVE           | 19C | CARGO HEADER             |
| 3C  | MASTER SUCTION VALVE | 30C | CARGO PIPELINE           |
| 4C  | DISCHARGE VALVE      | 31C | BYPASS VALVE             |
| 5C  | HEADER VALVE         | 36C | PRESSURE GAUGE           |
| 7C  | PUMP SALVAGE VALVE   | 37C | CARGO DROP               |
| 8C  | RELIEF VALVE         |     | — ABOVE DECK PIPING      |
| 9C  | CHECK VALVE          |     | - - - BELOW DECK PIPING  |
| 10C | BURP VALVE           |     |                          |

NOTE 1: CONTAINMENT P/S

REV.	DATE	BY	CHK	APP	REVISION DESCRIPTION
2	02/28/22	MRV	DDA	CW	REVISED PER CLIENT COMMENTS
1	07/10/18	WFB	DDA		REVISED PER CLIENT COMMENTS
0	05/11/18	WFB	DDA		ISSUED FOR APPROVAL

TRINITY

**KIRBY INLAND MARINE**

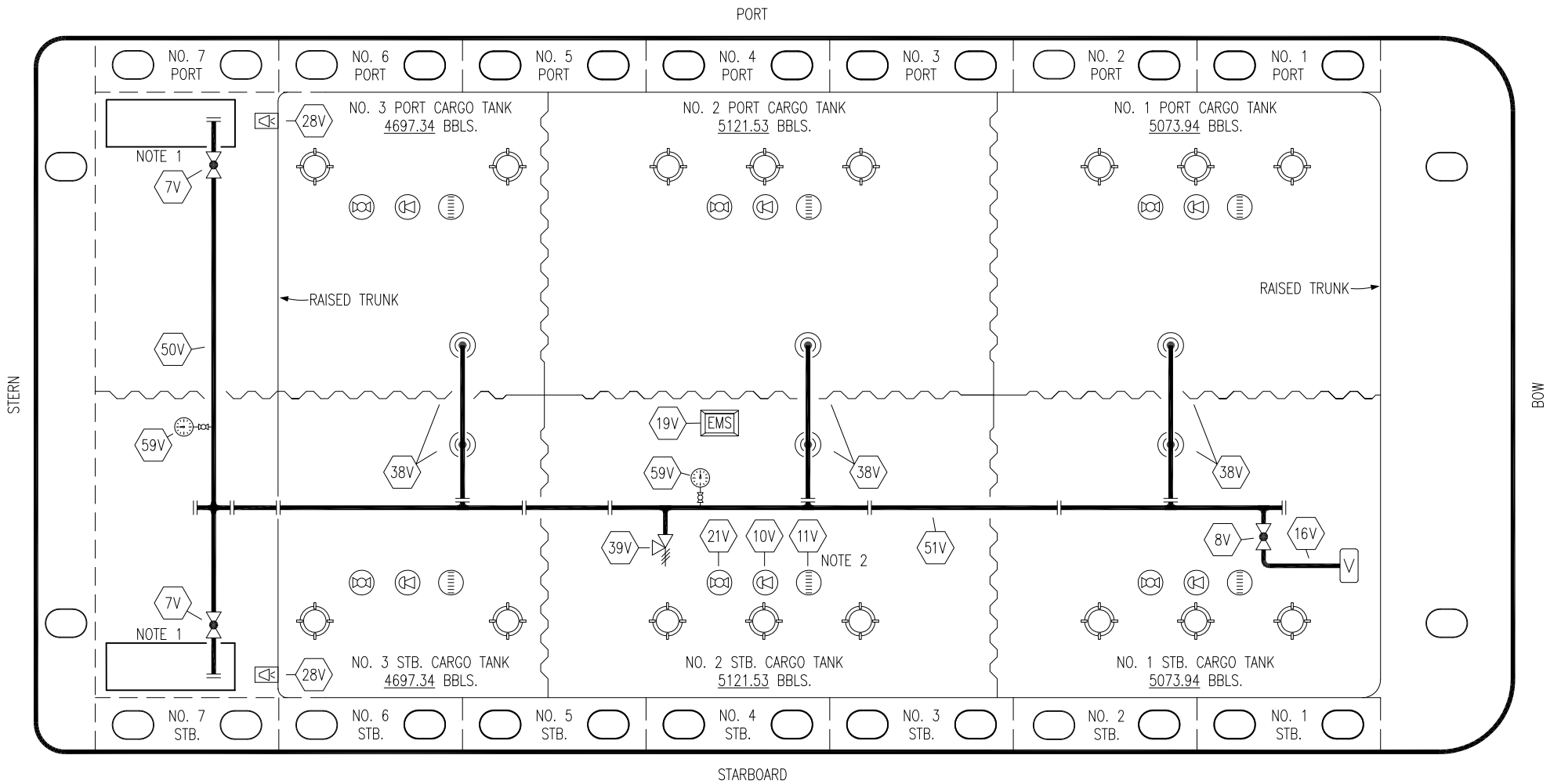
**CARGO**

**PIPING FLOW DIAGRAM**

**HTCO 3082**

SCALE: NONE  
PAGE: 1 OF 3

**REV. 2**



NO	DESCRIPTION	NO	DESCRIPTION
7V	8" HEADER VALVE	28V	DOCK CONNECTION ALARM
8V	8" VENT STACK VALVE	38V	8" VAPOR PENETRATION
10V	HIGH LEVEL/OVERFILL ALARM	39V	PRESSURE/VACUUM VALVE
11V	1-METER GAUGE STICK	50V	8" VAPOR HEADER
16V	VAPOR VENT STACK	51V	8" VAPOR PIPELINE
19V	EMERGENCY ENGINE SHUT DOWN	59V	PRESS/VAC GAUGE
21V	2" HERMETIC GAUGE	—	ABOVE DECK PIPING

NOTE 2: TYPICAL RIGGING IN EACH TANK

NOTE 1: CONTAINMENT P/S

REV.	DATE	BY	CHK	APP	REVISION DESCRIPTION
1	02/28/22	MRV	DDA	CW	REVISED PER CLIENT COMMENTS
0	05/11/18	WFB	DDA		ISSUED FOR APPROVAL

TRINITY

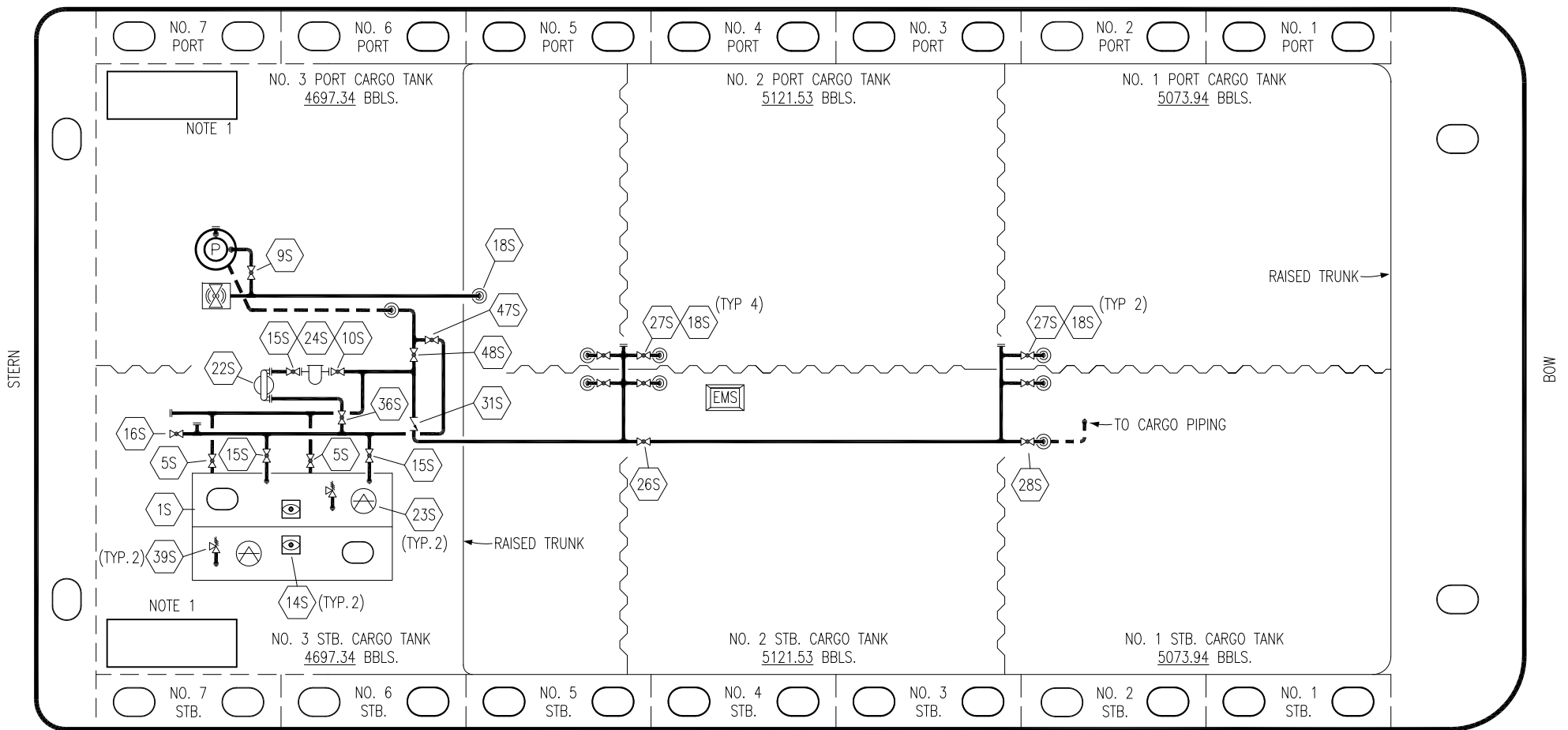
**KIRBY INLAND MARINE**

**VAPOR  
PIPING FLOW DIAGRAM**

**HTCO 3082**

SCALE: NONE	REV. 1
PAGE: 2 OF 3	

PORT



- |     |                              |
|-----|------------------------------|
| NO  | DESCRIPTION                  |
| 1S  | SLOP TANK                    |
| 5S  | SLOP TANK SUCTION VALVE      |
| 9S  | BURP VALVE                   |
| 10S | STRIPPING PUMP BLOCK VALVE   |
| 14S | SIGHT GLASS                  |
| 15S | DISCHARGE VALVE              |
| 16S | REMOTE SUCTION CONNECTION    |
| 18S | TYP. STRIPPING PENETRATION   |
| 22S | STRIPPING PUMP               |
| 23S | HERMETIC GAUGE               |
| 24S | BASKET STRAINER              |
| 26S | STRIPPING HEADER BLOCK VALVE |

- |     |                           |
|-----|---------------------------|
| NO  | DESCRIPTION               |
| 27S | SUMP SUCTION VALVE        |
| 28S | CARGO PIPING SUCTION      |
| 31S | CHECK VALVE               |
| 32S | PUMP WELL PRIMER VALVE    |
| 33S | PUMP WELL SUCTION         |
| 36S | STRIPPING PUMP DISCHARGE  |
| 39S | P/V VALVE                 |
| 44S | STRIPPING PUMP SUCTION    |
| 47S | DEEP WELL FILL VALVE      |
| 48S | DEEP WELL STRIPPING VALVE |
- ABOVE DECK PIPING  
 - - - BELOW DECK PIPING

STARBOARD

NOTE 1: CONTAINMENT P/S

REV.	DATE	BY	CHK	APP	REVISION DESCRIPTION
1	02/28/22	MRV	DDA	CW	REVISED PER CLIENT COMMENTS
0	05/11/18	WFB	DDA		ISSUED FOR APPROVAL

TRINITY

KIRBY INLAND MARINE

STRIPPING  
PIPING FLOW DIAGRAM

HTCO 3082

REV. 1

SCALE: NONE	PAGE: 3 OF 3
-------------	--------------