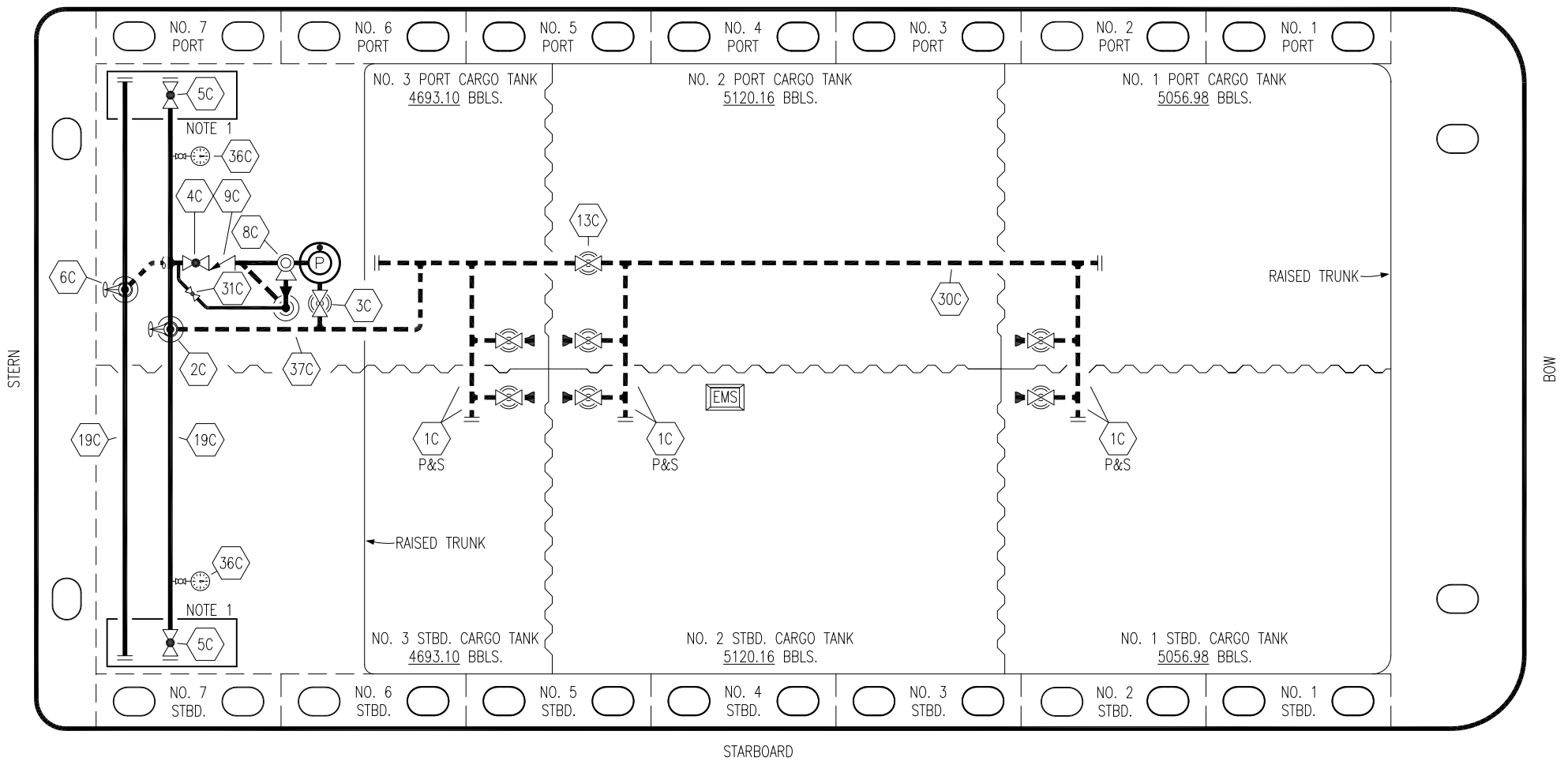


PORT



STARBOARD


NO	DESCRIPTION	NO	DESCRIPTION
1C	CARGO TANK VALVE	13C	CARGO PIPING BLOCK VALVE
2C	LOAD VALVE	19C	CARGO HEADER
3C	MASTER SUCTION VALVE	30C	CARGO PIPELINE
4C	DISCHARGE VALVE	31C	BYPASS VALVE
5C	HEADER VALVE	36C	PRESSURE GAUGE
6C	SALVAGE VALVE	37C	CARGO DROP
8C	RELIEF VALVE	—	—
9C	CHECK VALVE	—	—

— ABOVE DECK PIPING
 - - - BELOW DECK PIPING

NOTE 1: CONTAINMENT P/S

0	04/28/21	MRV	DDA	MW	ISSUED FOR APPROVAL
REV.	DATE	BY	CHK	APP	REVISION DESCRIPTION

TRINITY



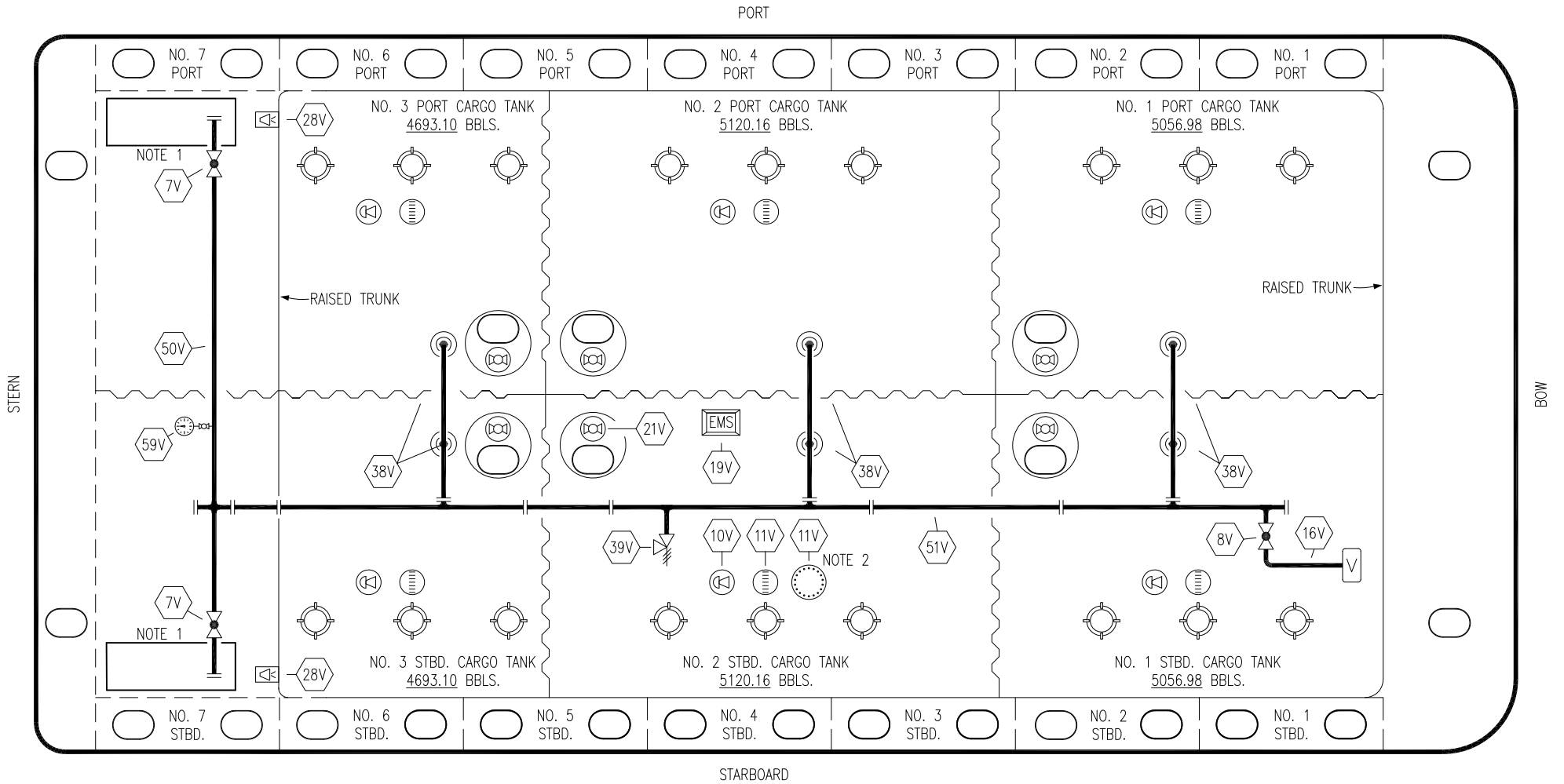
KIRBY INLAND MARINE

CARGO

PIPING FLOW DIAGRAM

HTCO 3078

SCALE: NONE	REV. 0
PAGE: 1 OF 3	



- | | | | |
|-----|----------------------------|-----|-----------------------|
| NO | DESCRIPTION | NO | DESCRIPTION |
| 7V | 8" HEADER VALVE | 28V | DOCK CONNECTION ALARM |
| 8V | 8" VENT STACK VALVE | 38V | 8" VAPOR PENETRATION |
| 10V | HIGH LEVEL/OVERFILL ALARM | 39V | PRESSURE/VACUUM VALVE |
| 11V | 1-METER GAUGE STICK | 50V | 8" VAPOR HEADER |
| 16V | VAPOR VENT STACK | 51V | 8" VAPOR PIPELINE |
| 19V | EMERGENCY ENGINE SHUT DOWN | 59V | PRESS/VAC GAUGE |
| 21V | 2" HERMETIC GAUGE | — | ABOVE DECK PIPING |

- | | |
|-----|-----------------------|
| NO | DESCRIPTION |
| 28V | DOCK CONNECTION ALARM |
| 38V | 8" VAPOR PENETRATION |
| 39V | PRESSURE/VACUUM VALVE |
| 50V | 8" VAPOR HEADER |
| 51V | 8" VAPOR PIPELINE |
| 59V | PRESS/VAC GAUGE |
| — | ABOVE DECK PIPING |

NOTE 2: TYPICAL RIGGING IN EACH TANK
 NOTE 1: CONTAINMENT P/S

0	04/28/21	MRV	DDA	MW	ISSUED FOR APPROVAL
REV.	DATE	BY	CHK	APP	REVISION DESCRIPTION

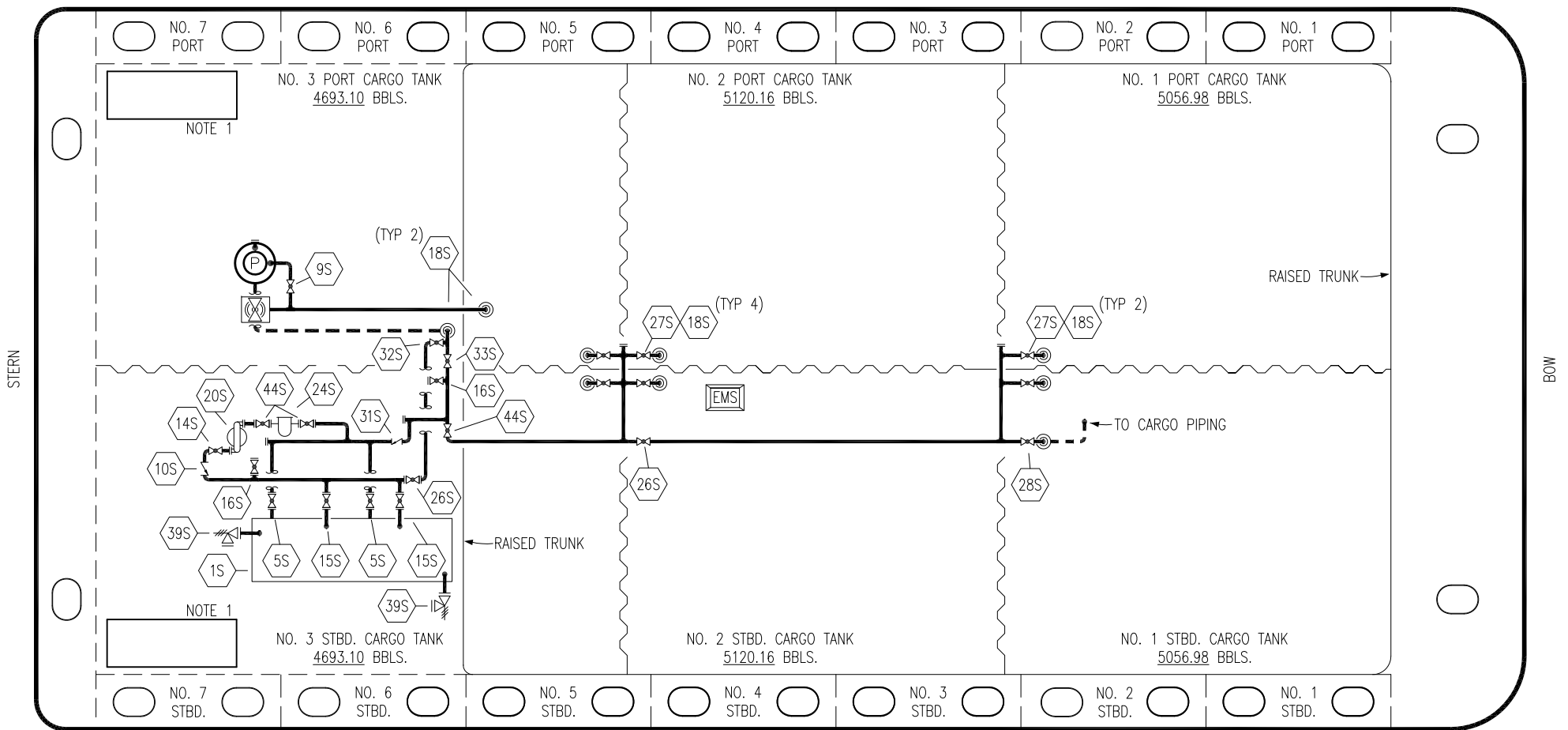
TRINITY

KIRBY INLAND MARINE

**VAPOR
PIPING FLOW DIAGRAM**

SCALE: NONE	HTCO 3078	REV. 0
PAGE: 2 OF 3		

PORT



NO	DESCRIPTION	NO	DESCRIPTION
1S	SLOP TANK	27S	SUMP SUCTION VALVE
5S	SLOP TANK SUCTION VALVE	28S	CARGO PIPING SUCTION
9S	BURP VALVE	31S	CHECK VALVE
10S	STRIPPING PUMP CHECK VALVE	32S	PUMP WELL PRIMER VALVE
14S	DISCHARGE VALVE	33S	PUMP WELL SUCTION VALVE
16S	REMOTE SUCTION CONNECTION	36S	STRIPPING PUMP DISCHARGE
18S	STRIPPING DROP	39S	P/V VALVE
22S	STRIPPING PUMP	44S	STRIPPING PUMP SUCTION
24S	BASKET STRAINER	—	—
26S	STRIPPING HEADER BLOCK VALVE	—	—

STARBOARD

NOTE 1: CONTAINMENT P/S

0	04/28/21	MRV	DDA	MW	ISSUED FOR APPROVAL
REV.	DATE	BY	CHK	APP	REVISION DESCRIPTION

TRINITY

KIRBY INLAND MARINE

STRIPPING
PIPING FLOW DIAGRAM

HTCO 3078

SCALE: NONE	REV. 0
PAGE: 3 OF 3	