


| | | | |
|-----|--------------------------|-----|-----------------------|
| NO | DESCRIPTION | NO | DESCRIPTION |
| 1C | CARGO TANK VALVE | 19C | CARGO HEADER |
| 2C | LOAD VALVE | 20C | DUMMY HEADER PIPING |
| 3C | MASTER SUCTION VALVE | 21C | DUMMY HEADER VALVE |
| 4C | DISCHARGE VALVE | 30C | CARGO PIPELINE |
| 5C | HEADER VALVE | 37C | CARGO DROP |
| 8C | RELIEF VALVE | — | — ABOVE DECK PIPING |
| 9C | CHECK VALVE | --- | --- BELOW DECK PIPING |
| 13C | CARGO PIPING BLOCK VALVE | | |

NOTE 1: CONTAINMENT P/S

| | | | | |
|------|----------|-----|-----|----------------------|
| 0 | 07/25/19 | NRB | DDA | ISSUED FOR APPROVAL |
| REV. | DATE | BY | CHK | APP |
| | | | | REVISION DESCRIPTION |



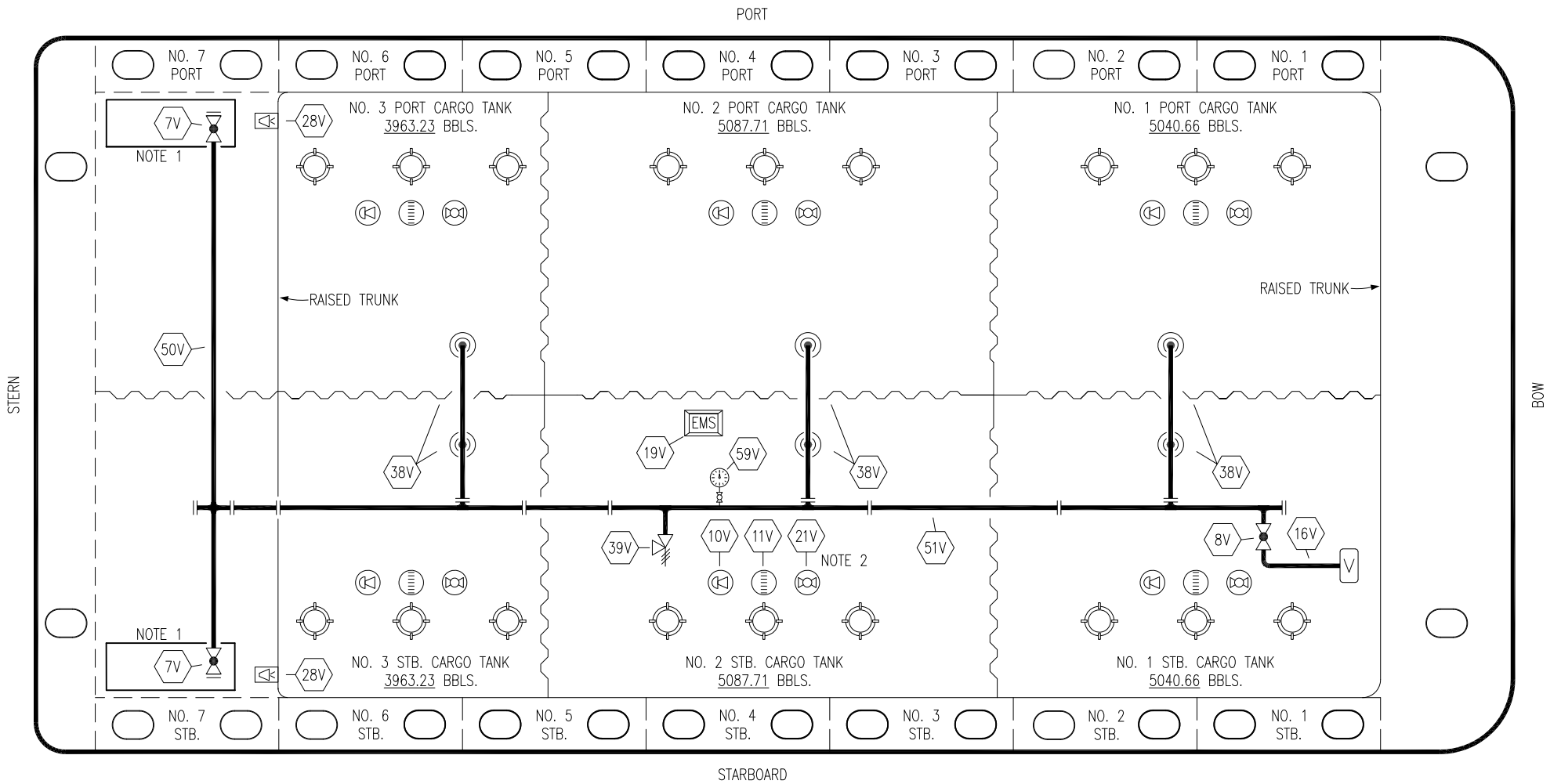
KIRBY INLAND MARINE

CARGO

PIPING FLOW DIAGRAM

HTCO 3075


| | |
|--------------|--------|
| SCALE: NONE | REV. 0 |
| PAGE: 1 OF 3 | |



| NO | DESCRIPTION | NO | DESCRIPTION |
|-----|----------------------------|-----|-----------------------|
| 7V | HEADER VALVE | 28V | DOCK CONNECTION ALARM |
| 8V | VENT STACK VALVE | 38V | VAPOR PENETRATION ☉ |
| 10V | HIGH LEVEL/OVERFILL ALARM | 39V | PRESSURE/VACUUM VALVE |
| 11V | 1-METER GAUGE STICK | 50V | VAPOR HEADER |
| 16V | VAPOR VENT STACK | 51V | VAPOR PIPELINE |
| 19V | EMERGENCY ENGINE SHUT DOWN | 59V | PRESS/VAC GAUGE |
| 21V | 2" HERMETIC GAUGE | — | ABOVE DECK PIPING |

NOTE 2: TYPICAL RIGGING IN EACH TANK

NOTE 1: CONTAINMENT P/S

| | | | | | | | |
|------|----------|-----|-----|---------------------|----------------------|--|--------|
| | | | | | | KIRBY INLAND MARINE  | |
| | | | | | | VAPOR PIPING FLOW DIAGRAM | |
| 0 | 07/25/19 | NRB | DDA | ISSUED FOR APPROVAL | | SCALE: | NONE |
| REV. | DATE | BY | CHK | APP | REVISION DESCRIPTION | PAGE: | 3 OF 3 |
| | | | | | | HTCO 3075 | |
| | | | | | | REV. 0 | |