


NO	DESCRIPTION	NO	DESCRIPTION
1C	CARGO TANK VALVE	19C	CARGO HEADER
2C	LOAD VALVE	20C	DUMMY HEADER PIPING
3C	MASTER SUCTION VALVE	21C	DUMMY HEADER VALVE
4C	DISCHARGE VALVE	30C	CARGO PIPELINE
5C	HEADER VALVE	37C	CARGO DROP
8C	RELIEF VALVE		ABOVE DECK PIPING
9C	CHECK VALVE		BELOW DECK PIPING
13C	CARGO PIPING BLOCK VALVE		

NOTE 1: CONTAINMENT P/S

0	07/25/19	NRB	DDA		ISSUED FOR APPROVAL
REV.	DATE	BY	CHK	APP	REVISION DESCRIPTION



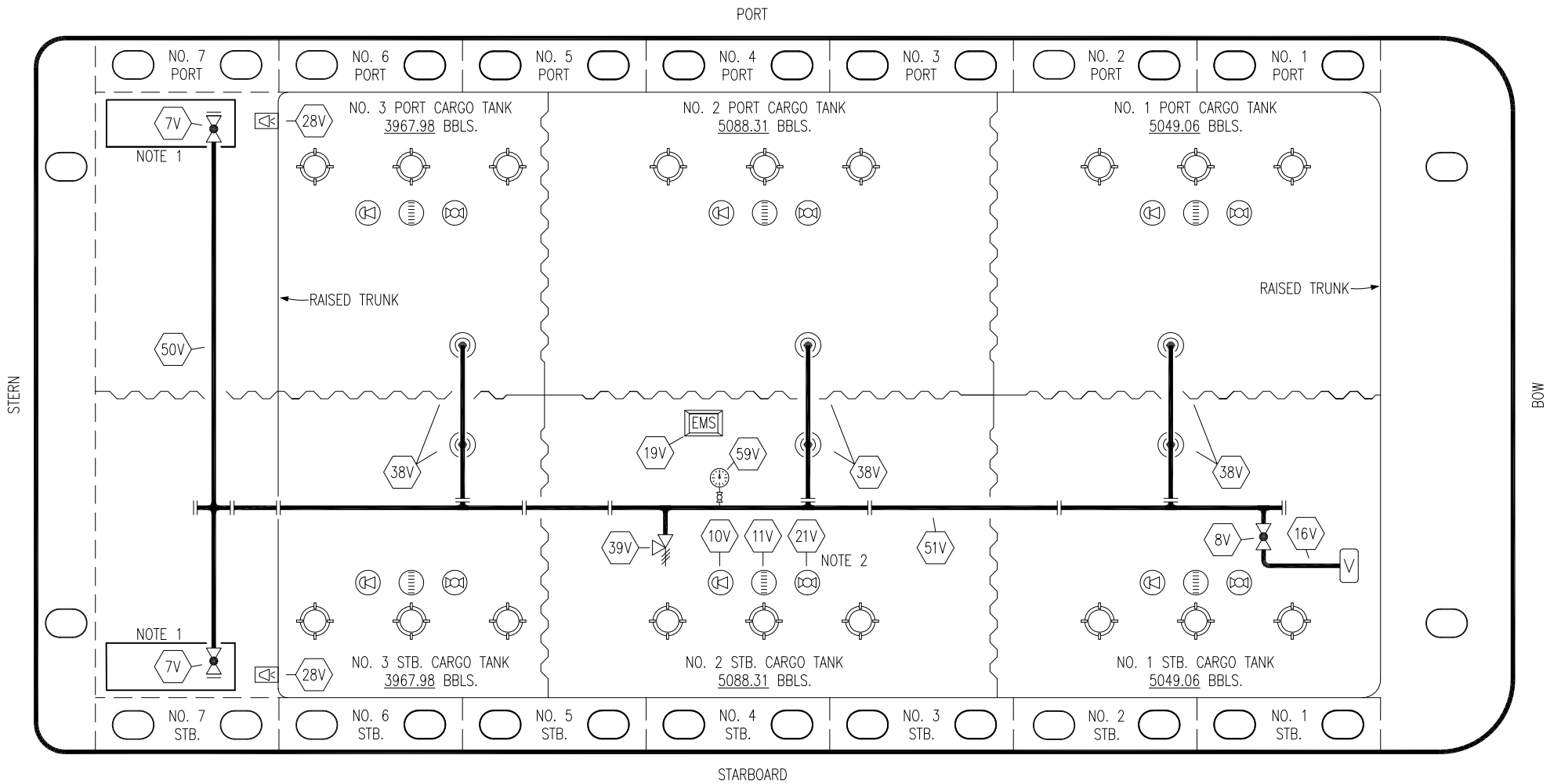
KIRBY INLAND MARINE

CARGO

PIPING FLOW DIAGRAM

HTCO 3074


SCALE: NONE	REV. 0
PAGE: 1 OF 3	

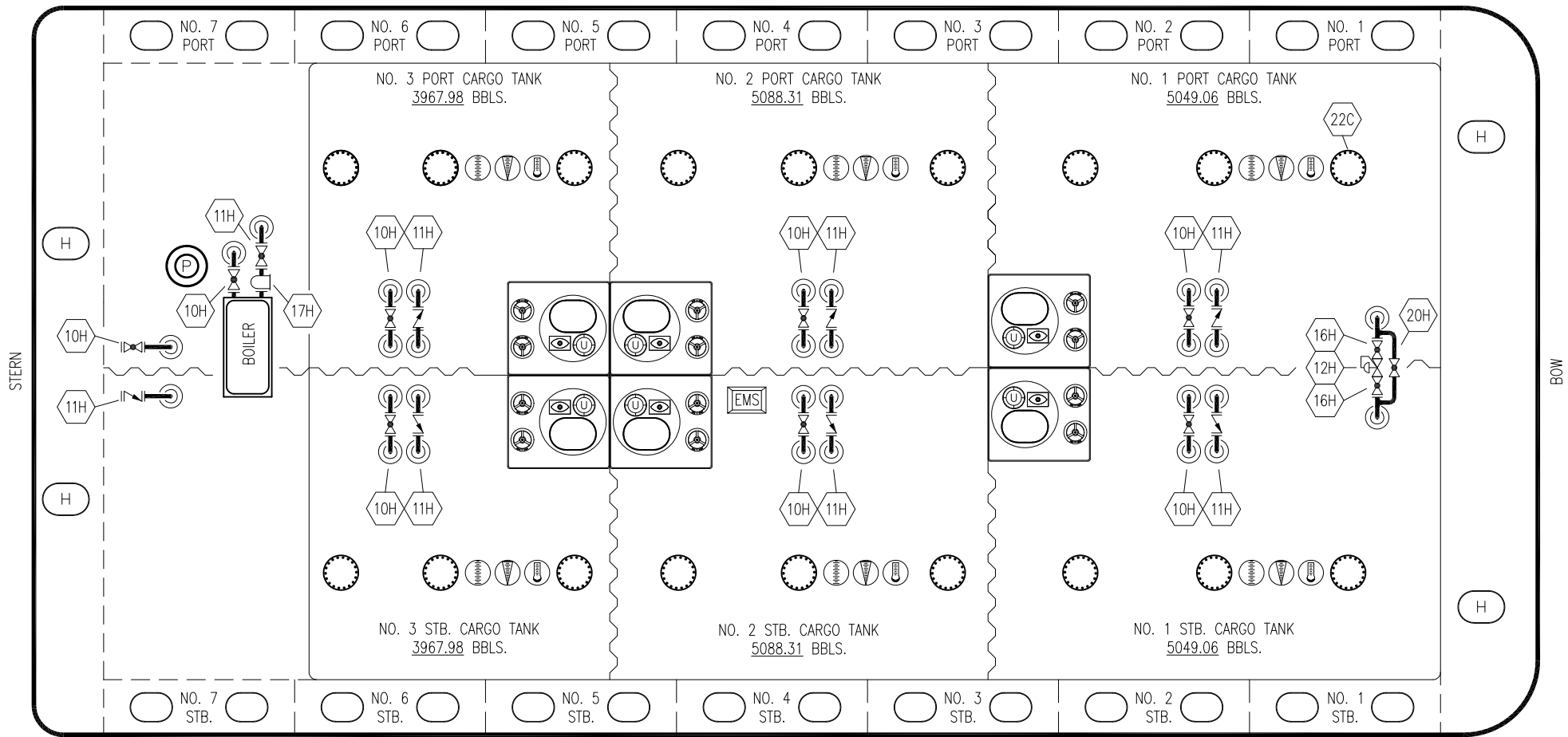


NO	DESCRIPTION	NO	DESCRIPTION
7V	HEADER VALVE	28V	DOCK CONNECTION ALARM
8V	VENT STACK VALVE	38V	VAPOR PENETRATION (⊙)
10V	HIGH LEVEL/OVERFILL ALARM	39V	PRESSURE/VACUUM VALVE
11V	1-METER GAUGE STICK	50V	VAPOR HEADER
16V	VAPOR VENT STACK	51V	VAPOR PIPELINE
19V	EMERGENCY ENGINE SHUT DOWN	59V	PRESS/VAC GAUGE
21V	2" HERMETIC GAUGE	—	ABOVE DECK PIPING

NOTE 2: TYPICAL RIGGING IN EACH TANK

NOTE 1: CONTAINMENT P/S

						KIRBY INLAND MARINE 	
						VAPOR PIPING FLOW DIAGRAM	
0	07/25/19	NRB	DDA	ISSUED FOR APPROVAL		SCALE:	NONE
REV.	DATE	BY	CHK	APP	REVISION DESCRIPTION	PAGE:	3 OF 3
						HTCO 3074	
						REV. 0	



STERN

BOW

- | NO | DESCRIPTION |
|-----|---------------------|
| 10H | SUPPLY VALVE |
| 11H | RETURN (CHK. VALVE) |
| 12H | PRESSURE REGULATOR |
| 16H | ISOLATION VALVE |
| 17H | BASKET STRAINER |
| 20H | BYPASS VALVE |

— ABOVE DECK PIPING

KIRBY INLAND MARINE					
HOT OIL PIPING FLOW DIAGRAM					
0	07/25/19	NRB	DDA	ISSUED FOR APPROVAL	SCALE: NONE
REV.	DATE	BY	CHK	APP	REVISION DESCRIPTION
					PAGE: 2 of 3
HTCO 3074					REV. 0