

NO	DESCRIPTION	NO	DESCRIPTION
1C	CARGO TANK VALVE	19C	CARGO HEADER
2C	LOAD VALVE	20C	DUMMY HEADER PIPING
3C	MASTER SUCTION VALVE	21C	DUMMY HEADER VALVE
4C	DISCHARGE VALVE	30C	CARGO PIPELINE
5C	HEADER VALVE	37C	CARGO DROP
8C	RELIEF VALVE		ABOVE DECK PIPING
9C	CHECK VALVE		BELOW DECK PIPING
13C	CARGO PIPING BLOCK VALVE		

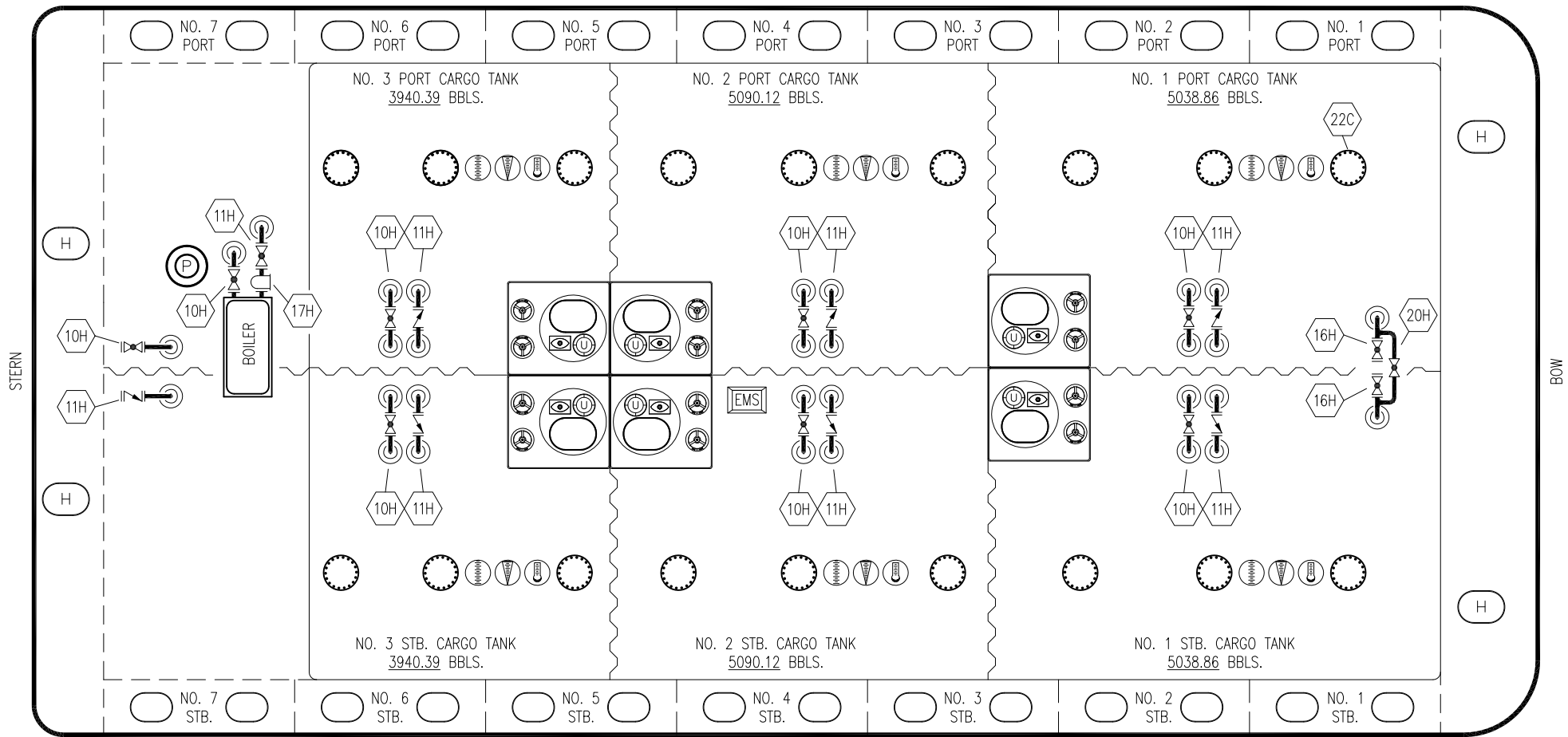
NOTE 1: CONTAINMENT P/S

REV.	DATE	BY	CHK	APP	REVISION DESCRIPTION
0	12/04/19	MRV	DDA		ISSUED FOR APPROVAL

KIRBY INLAND MARINE

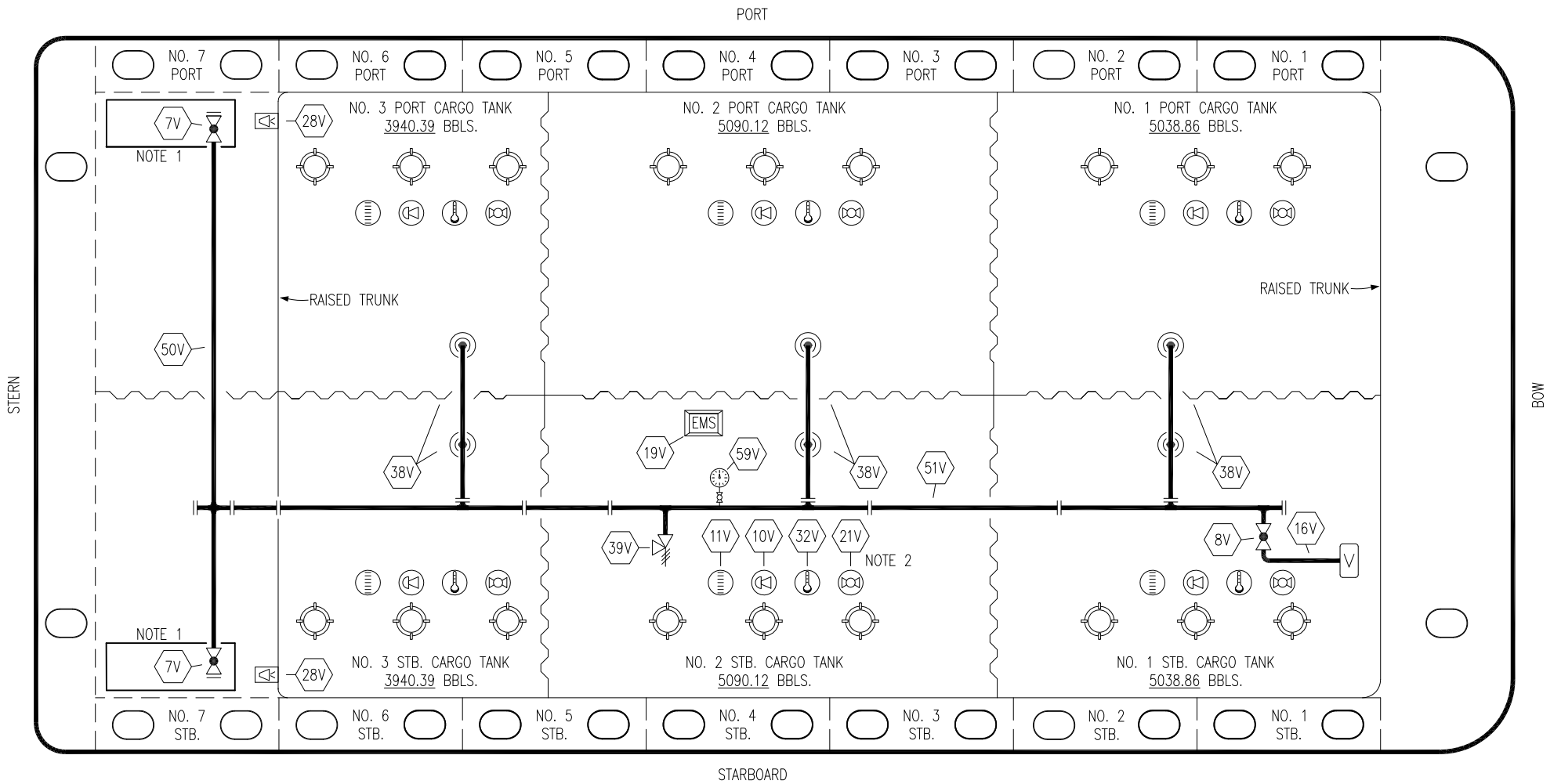
CARGO  
PIPING FLOW DIAGRAM

HTCO 3073	REV. 0
SCALE: NONE	PAGE: 1 OF 3



- | NO  | DESCRIPTION         |
|-----|---------------------|
| 10H | SUPPLY VALVE        |
| 11H | RETURN (CHK. VALVE) |
| 16H | ISOLATION VALVE     |
| 17H | BASKET STRAINER     |
| 20H | BYPASS VALVE        |
|     | ABOVE DECK PIPING   |

						<b>KIRBY INLAND MARINE</b>	
						<b>HOT OIL PIPING FLOW DIAGRAM</b>	
0	12/04/19	MRV	DDA	ISSUED FOR APPROVAL		SCALE:	NONE
REV.	DATE	BY	CHK	APP	REVISION DESCRIPTION	PAGE:	2 of 3
						<b>HTCO 3073</b>	
						REV. <b>0</b>	



NO	DESCRIPTION	NO	DESCRIPTION
7V	HEADER VALVE	32V	TEMPERATURE GAUGE
8V	VENT STACK VALVE	38V	VAPOR PENETRATION (⊙)
10V	HIGH LEVEL/OVERFILL ALARM	39V	PRESSURE/VACUUM VALVE
11V	1-METER GAUGE STICK	50V	VAPOR HEADER
16V	VAPOR VENT STACK	51V	VAPOR PIPELINE
19V	EMERGENCY ENGINE SHUT DOWN	59V	PRESS/VAC GAUGE
21V	2" HERMETIC GAUGE	—	ABOVE DECK PIPING
28V	DOCK CONNECTION ALARM		

NOTE 2: TYPICAL RIGGING IN EACH TANK

NOTE 1: CONTAINMENT P/S

						<b>KIRBY INLAND MARINE</b>	
						<b>VAPOR PIPING FLOW DIAGRAM</b>	
0	12/04/19	MRV	DDA	ISSUED FOR APPROVAL		SCALE:	NONE
REV.	DATE	BY	CHK	APP	REVISION DESCRIPTION	PAGE:	3 OF 3
						<b>HTCO 3073</b>	
						REV. <b>0</b>	