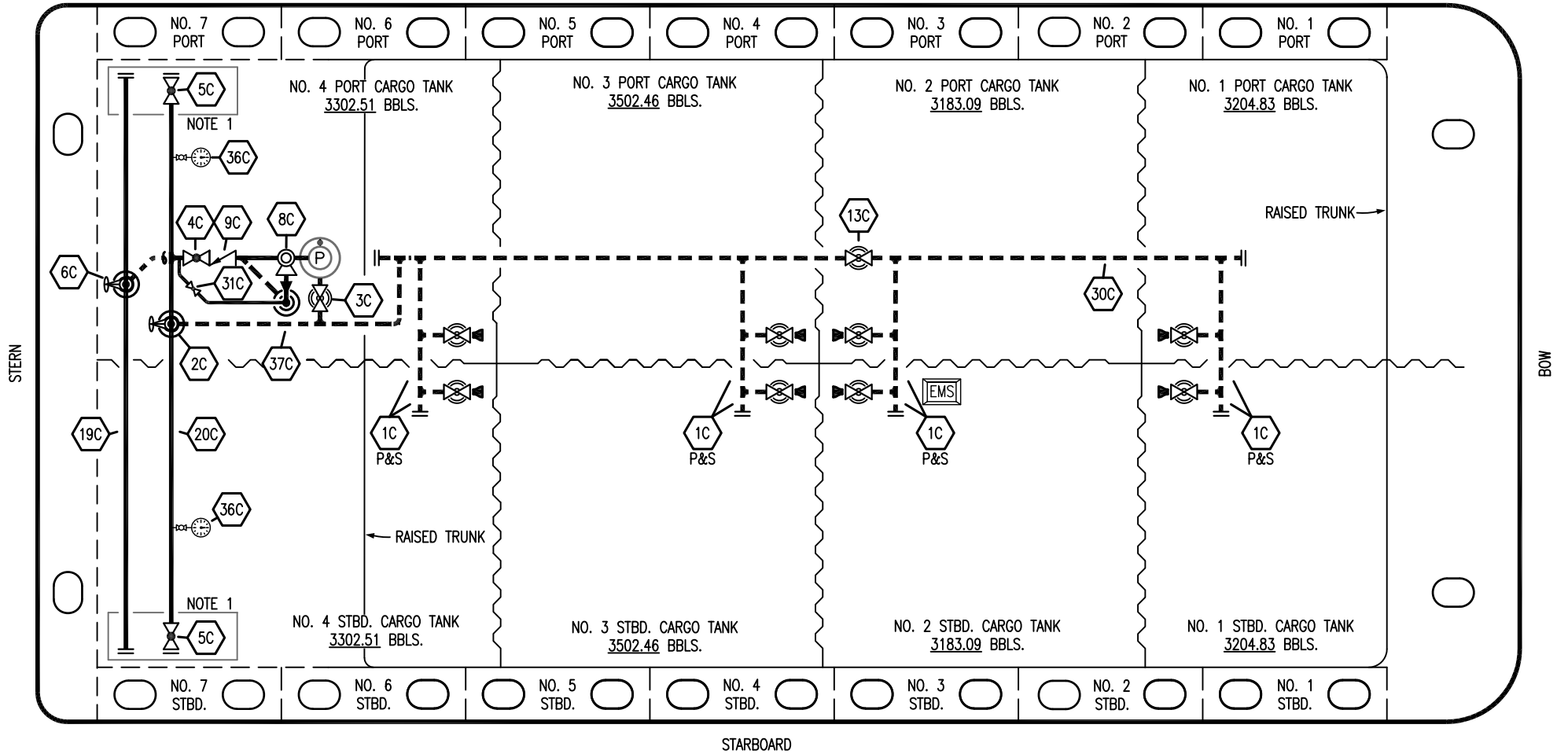


PORT



STARBOARD

- | | | | |
|-----|--------------------------|-------|-------------------------|
| NO | DESCRIPTION | NO | DESCRIPTION |
| 1C | CARGO TANK VALVE | 19C | CARGO HEADER |
| 2C | LOAD VALVE | 20C | DUMMY HEADER PIPING |
| 3C | MASTER SUCTION VALVE | 30C | CARGO PIPELINE |
| 4C | DISCHARGE VALVE | 31C | BYPASS VALVE |
| 5C | HEADER VALVE | 36C | PRESSURE GAUGE |
| 6C | SALVAGE VALVE | 37C | CARGO DROP |
| 8C | RELIEF VALVE | — | — ABOVE DECK PIPING |
| 9C | CHECK VALVE | - - - | - - - BELOW DECK PIPING |
| 13C | CARGO PIPING BLOCK VALVE | | |

NOTE 1: CONTAINMENT P/S

REV.	DATE	BY	CHK	APP	REVISION DESCRIPTION
2	04/03/24	AC	DDA	REM	REVISED PER CLIENT COMMENTS
1	03/13/24	AC	DDA	RM	REVISED PER CLIENT COMMENTS
0	07/16/19	NRB	DDA		ISSUED FOR APPROVAL

TRINITY

KIRBY INLAND MARINE

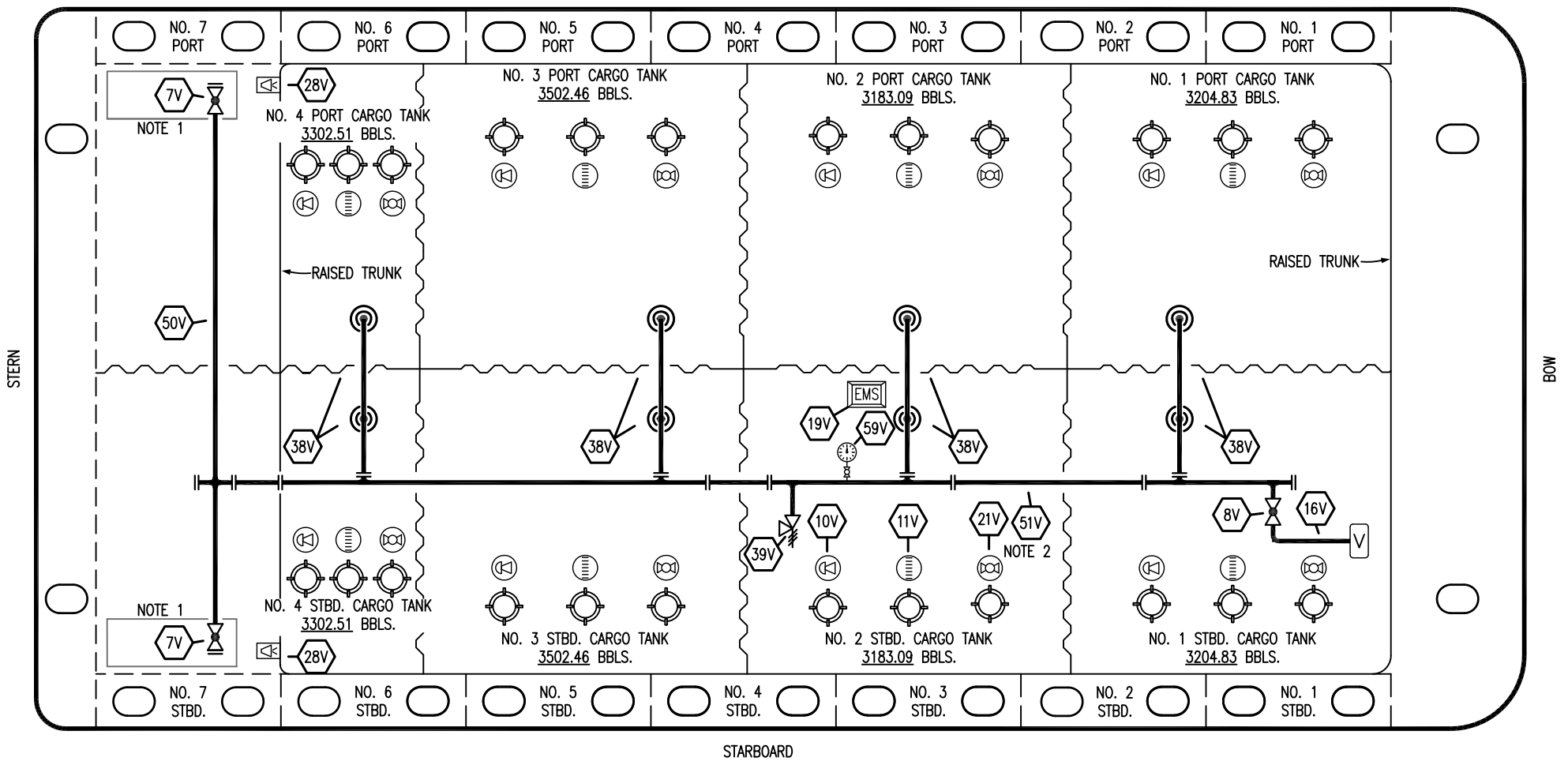
CARGO

PIPING FLOW DIAGRAM

HTCO 3071

SCALE: NONE	REV. 2
PAGE: 1 OF 3	

PORT



STARBOARD

NO	DESCRIPTION	NO	DESCRIPTION
7V	HEADER VALVE	28V	DOCK CONNECTION ALARM
8V	VENT STACK VALVE	38V	VAPOR PENETRATION
10V	HIGH LEVEL/OVERFILL ALARM	39V	PRESSURE/VACUUM VALVE
11V	1-METER GAUGE STICK	50V	VAPOR HEADER
16V	VAPOR VENT STACK	51V	VAPOR PIPELINE
19V	EMERGENCY ENGINE SHUT DOWN	59V	PRESS/VAC GAUGE
21V	2" HERMETIC GAUGE	—	ABOVE DECK PIPING

NOTE 2: TYPICAL RIGGING IN EACH TANK
 NOTE 1: CONTAINMENT P/S

REV.	DATE	BY	CHK	APP	REVISION DESCRIPTION
2	04/03/24	AC	DDA	REM	REVISED PER CLIENT COMMENTS
1	03/13/24	AC	DDA	RM	REVISED PER CLIENT COMMENTS
0	07/16/19	NRB	DDA		ISSUED FOR APPROVAL

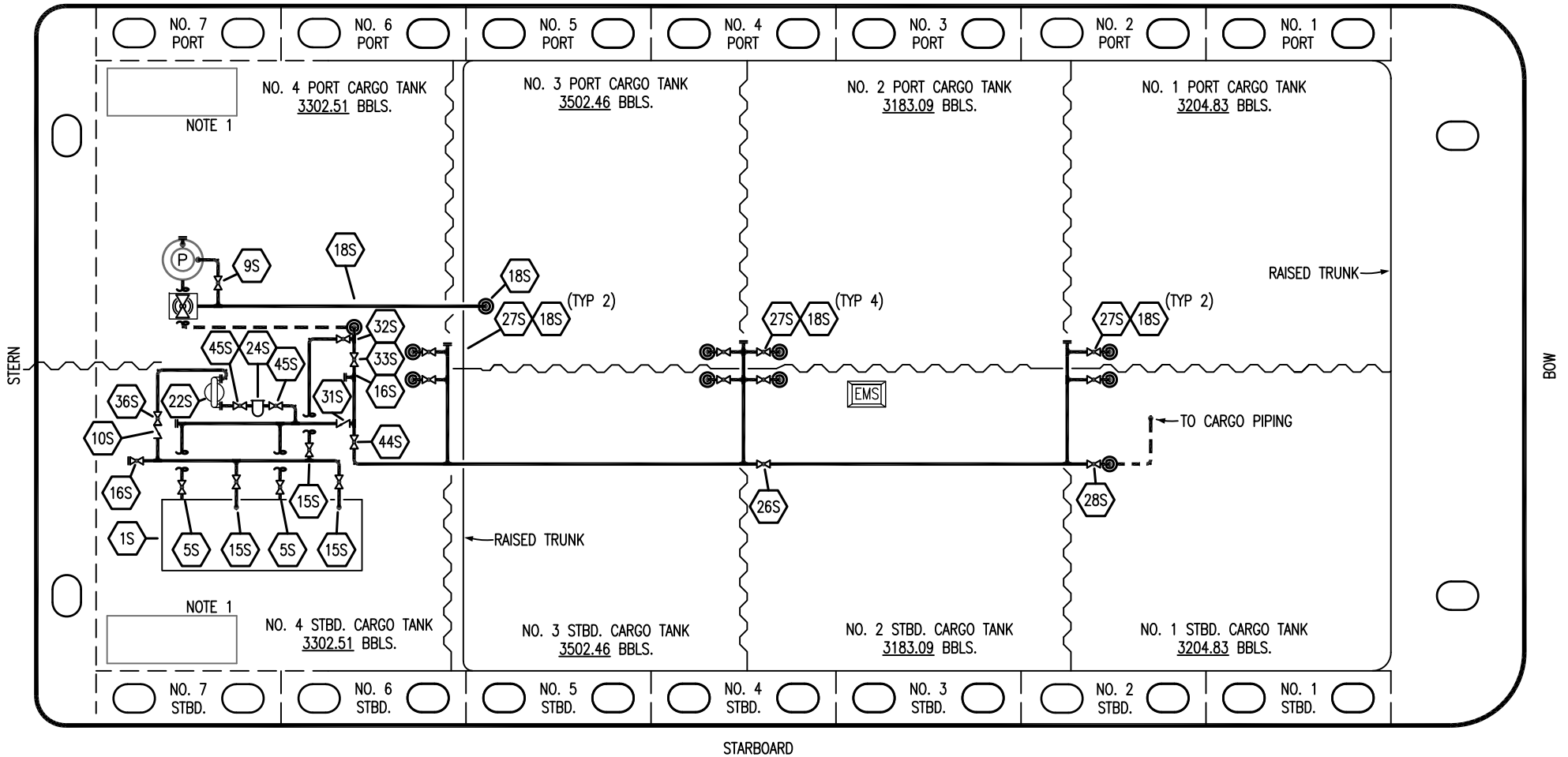
TRINITY

KIRBY INLAND MARINE

**VAPOR
PIPING FLOW DIAGRAM**

HTCO 3071	REV. 2
SCALE: NONE	PAGE: 2 OF 3

PORT




NO	DESCRIPTION	NO	DESCRIPTION
1S	SLOP TANK	27S	SUMP SUCTION VALVE
5S	SLOP TANK SUCTION VALVE	28S	CARGO PIPING SUCTION
9S	BURP VALVE	31S	CHECK VALVE
10S	STRIPPING PUMP CHECK VALVE	32S	PUMP WELL PRIMER VALVE
15S	DISCHARGE VALVE	33S	PUMP WELL SUCTION
16S	REMOTE SUCTION CONNECTION	36S	STRIPPING PUMP DISCHARGE
18S	TYP. STRIPPING PENETRATION (⊙)	44S	STRIPPING PUMP SUCTION
22S	STRIPPING PUMP	45S	STRIPPING PUMP SUCTION VALVE
24S	BASKET STRAINER	—	ABOVE DECK PIPING
26S	STRIPPING HEADER BLOCK VALVE	---	BELOW DECK PIPING

NOTE 1: CONTAINMENT P/S

REV.	DATE	BY	CHK	APP	REVISION DESCRIPTION
2	04/03/24	AC	DDA	REM	REVISED PER CLEINT COMMENTS
1	03/13/24	AC	DDA	RM	REVISED PER CLIENT COMMENTS
0	07/16/19	NRB	DDA		ISSUED FOR APPROVAL

TRINITY



KIRBY INLAND MARINE

STRIPPING

PIPING FLOW DIAGRAM

HTCO 3071

SCALE: NONE	REV. 2
PAGE: 3 OF 3	