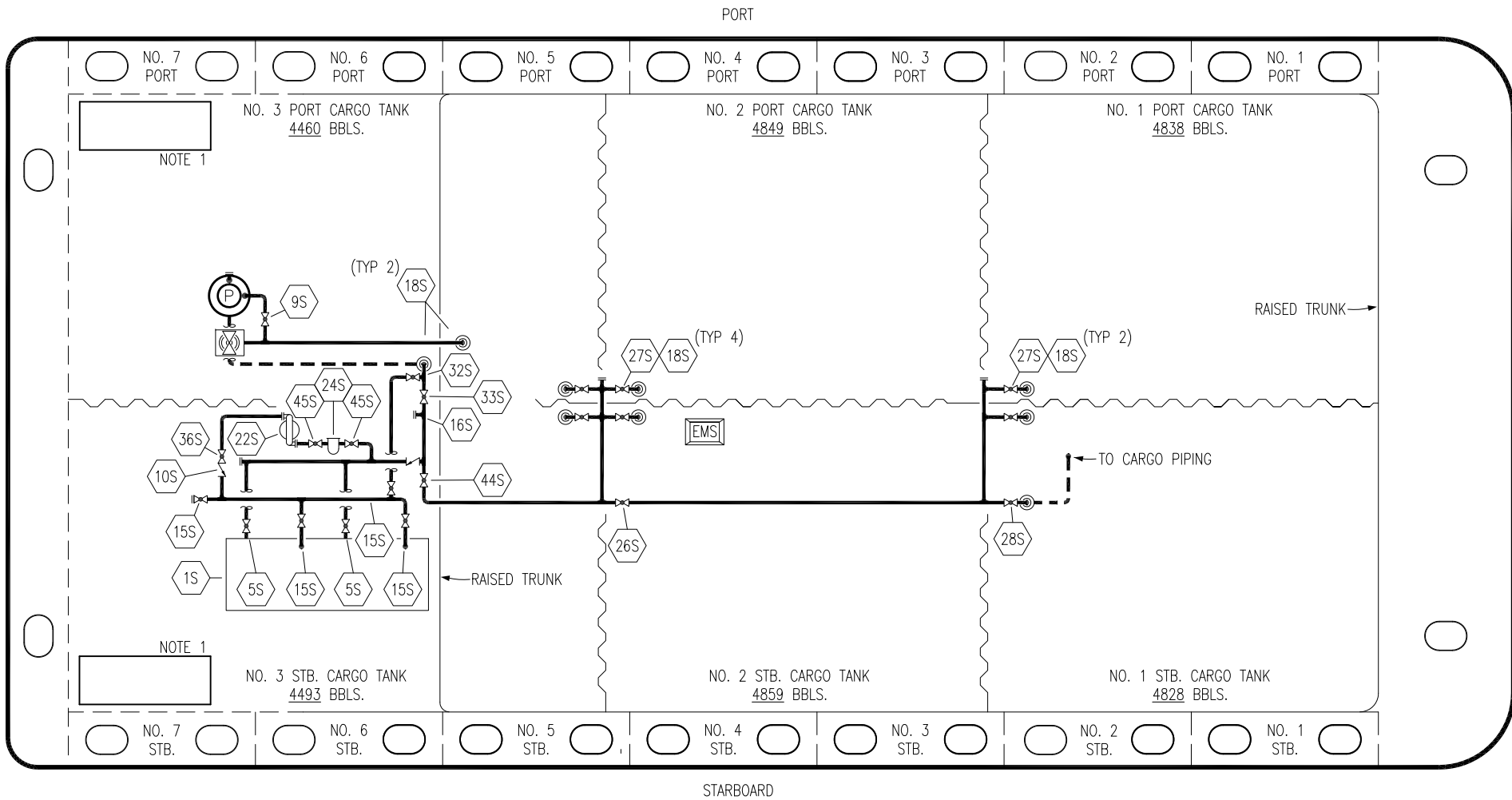


| NO  | DESCRIPTION                | NO  | DESCRIPTION              |
|-----|----------------------------|-----|--------------------------|
| 7V  | 8" HEADER VALVE            | 28V | DOCK CONNECTION ALARM    |
| 8V  | 8" VENT STACK VALVE        | 38V | 8" VAPOR PENETRATION (⊙) |
| 10V | HIGH LEVEL/OVERFILL ALARM  | 39V | PRESSURE/VACUUM VALVE    |
| 11V | 1-METER GAUGE STICK        | 50V | 8" VAPOR HEADER          |
| 16V | VAPOR VENT STACK           | 51V | 8" VAPOR PIPELINE        |
| 19V | EMERGENCY ENGINE SHUT DOWN | 59V | PRESS/VAC GAUGE          |
| 21V | 2" HERMETIC GAUGE          | —   | ABOVE DECK PIPING        |

NOTE 2: TYPICAL RIGGING IN EACH TANK

NOTE 1: CONTAINMENT P/S


|      |          |     |     |                     |                      |                                      |        |
|------|----------|-----|-----|---------------------|----------------------|--------------------------------------|--------|
|      |          |     |     |                     |                      | <b>KIRBY INLAND MARINE</b>           |        |
|      |          |     |     |                     |                      | <b>VAPOR<br/>PIPING FLOW DIAGRAM</b> |        |
| 0    | 08/08/19 | NRB | DDA | ISSUED FOR APPROVAL |                      | SCALE:                               | NONE   |
| REV. | DATE     | BY  | CHK | APP                 | REVISION DESCRIPTION | PAGE:                                | 2 OF 3 |
|      |          |     |     |                     |                      | <b>HTCO 3060</b>                     |        |
|      |          |     |     |                     |                      | REV. <b>0</b>                        |        |



| NO  | DESCRIPTION                | NO  | DESCRIPTION                  |
|-----|----------------------------|-----|------------------------------|
| 1S  | SLOP TANK                  | 26S | STRIPPING HEADER BLOCK VALVE |
| 5S  | SLOP TANK SUCTION VALVE    | 27S | SUMP SUCTION VALVE           |
| 9S  | BURP VALVE                 | 28S | CARGO PIPING SUCTION         |
| 10S | STRIPPING PUMP CHECK VALVE | 32S | PUMP WELL PRIMER VALVE       |
| 15S | DISCHARGE VALVE            | 33S | PUMP WELL SUCTION            |
| 16S | REMOTE SUCTION CONNECTION  | 36S | STRIPPING PUMP DISCHARGE     |
| 18S | TYP. STRIPPING PENETRATION | 44S | STRIPPING PUMP SUCTION       |
| 22S | STRIPPING PUMP             | 45S | STRIPPING PUMP SUCTION VALVE |
| 24S | BASKET STRAINER            |     | ABOVE DECK PIPING            |
|     |                            |     | BELOW DECK PIPING            |

NOTE 1: CONTAINMENT P/S

| REV. | DATE     | BY  | CHK | APP | REVISION DESCRIPTION |
|------|----------|-----|-----|-----|----------------------|
| 0    | 08/08/19 | NRB | DDA |     | ISSUED FOR APPROVAL  |



**KIRBY INLAND MARINE**

**STRIPPING  
PIPING FLOW DIAGRAM**

**HTCO 3060**

|              |        |
|--------------|--------|
| SCALE: NONE  | REV. 0 |
| PAGE: 3 OF 3 |        |