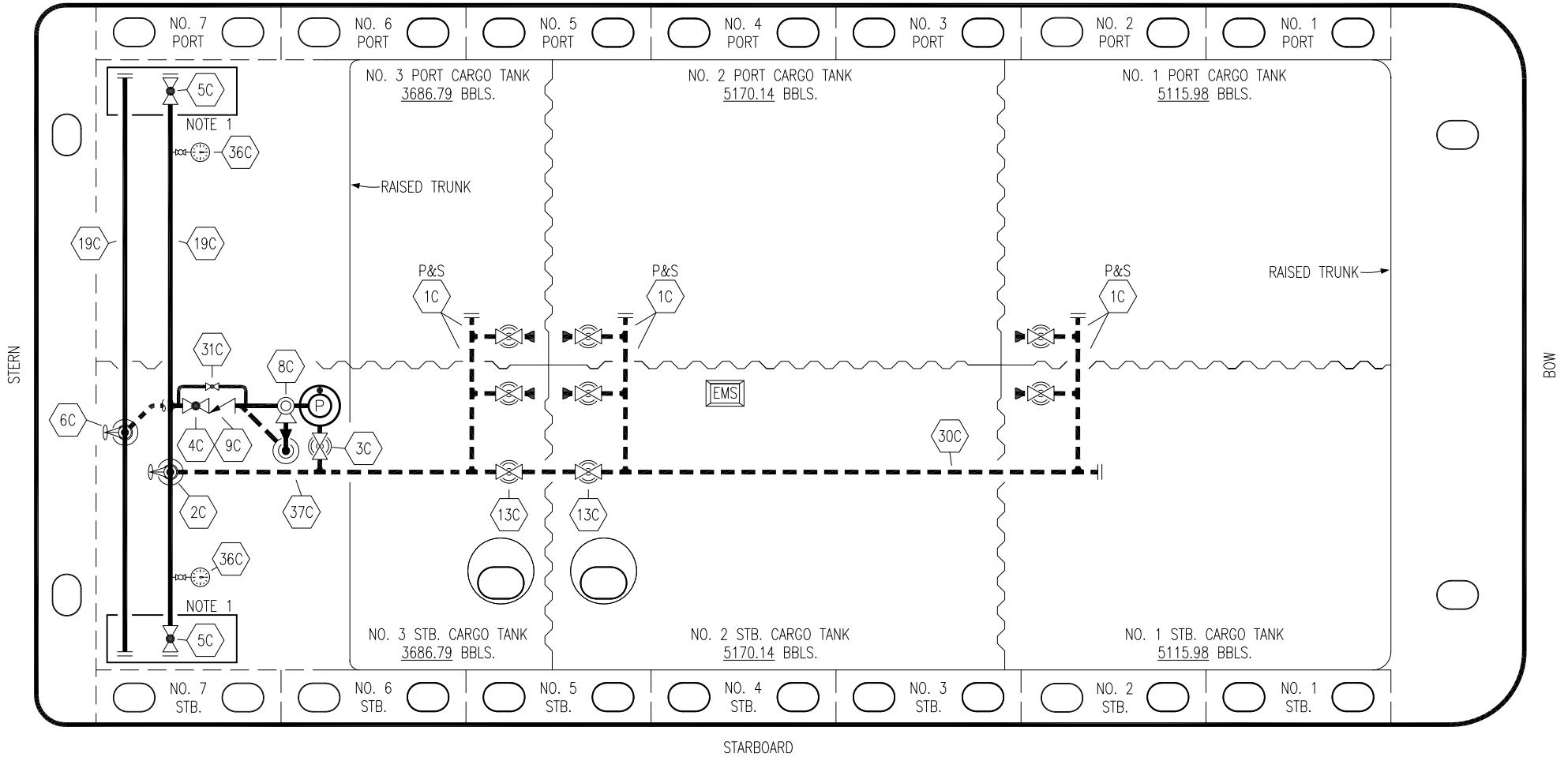



PORT



STERN


BOW

STARBOARD

- |    |                      |       |  |
|----|----------------------|-------|--|
| NO | DESCRIPTION          | NO    | DESCRIPTION  |
| 1C | CARGO TANK VALVE     | 13C   | CARGO PIPING BLOCK VALVE   |
| 2C | LOAD VALVE           | 19C   | CARGO HEADER   |
| 3C | MASTER SUCTION VALVE | 30C   | CARGO PIPELINE   |
| 4C | DISCHARGE VALVE      | 31C   | BYPASS VALVE   |
| 5C | HEADER VALVE         | 36C   | PRESSURE GAUGE   |
| 6C | SALVAGE VALVE        | 37C   | CARGO DROP  |
| 8C | RELIEF VALVE         | —     | — ABOVE DECK PIPING  |
| 9C | CHECK VALVE          | - - - | - - - BELOW DECK PIPING  |

NOTE 1: CONTAINMENT P/S

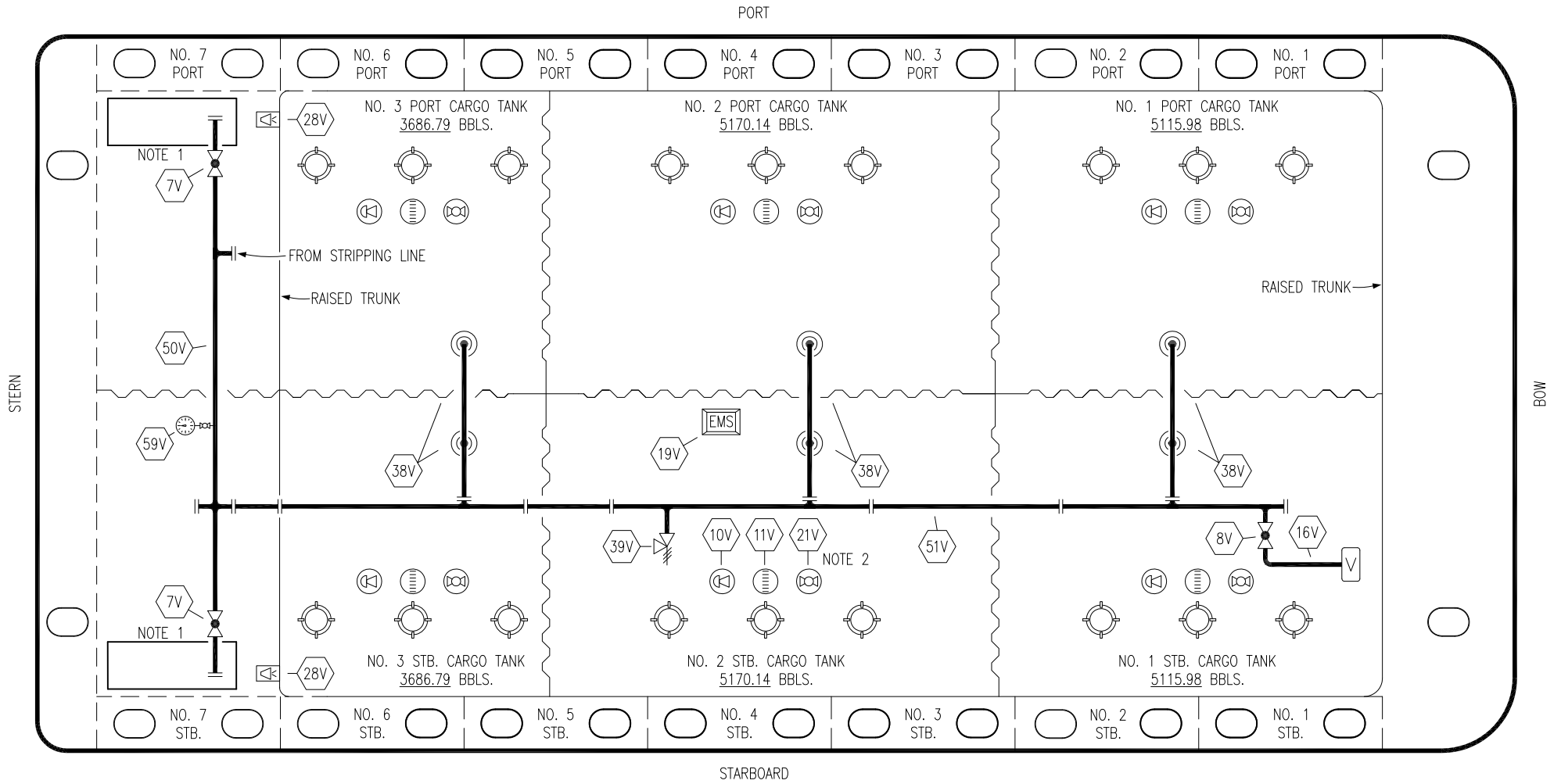
0	04/09/20	MRV	DDA	ISSUED FOR APPROVAL
REV.	DATE	BY	CHK	APP
				REVISION DESCRIPTION

**KIRBY INLAND MARINE** 

**CARGO  
PIPING FLOW DIAGRAM**

**HTCO 3013**

SCALE: NONE	REV. 0
PAGE: 1 OF 3	

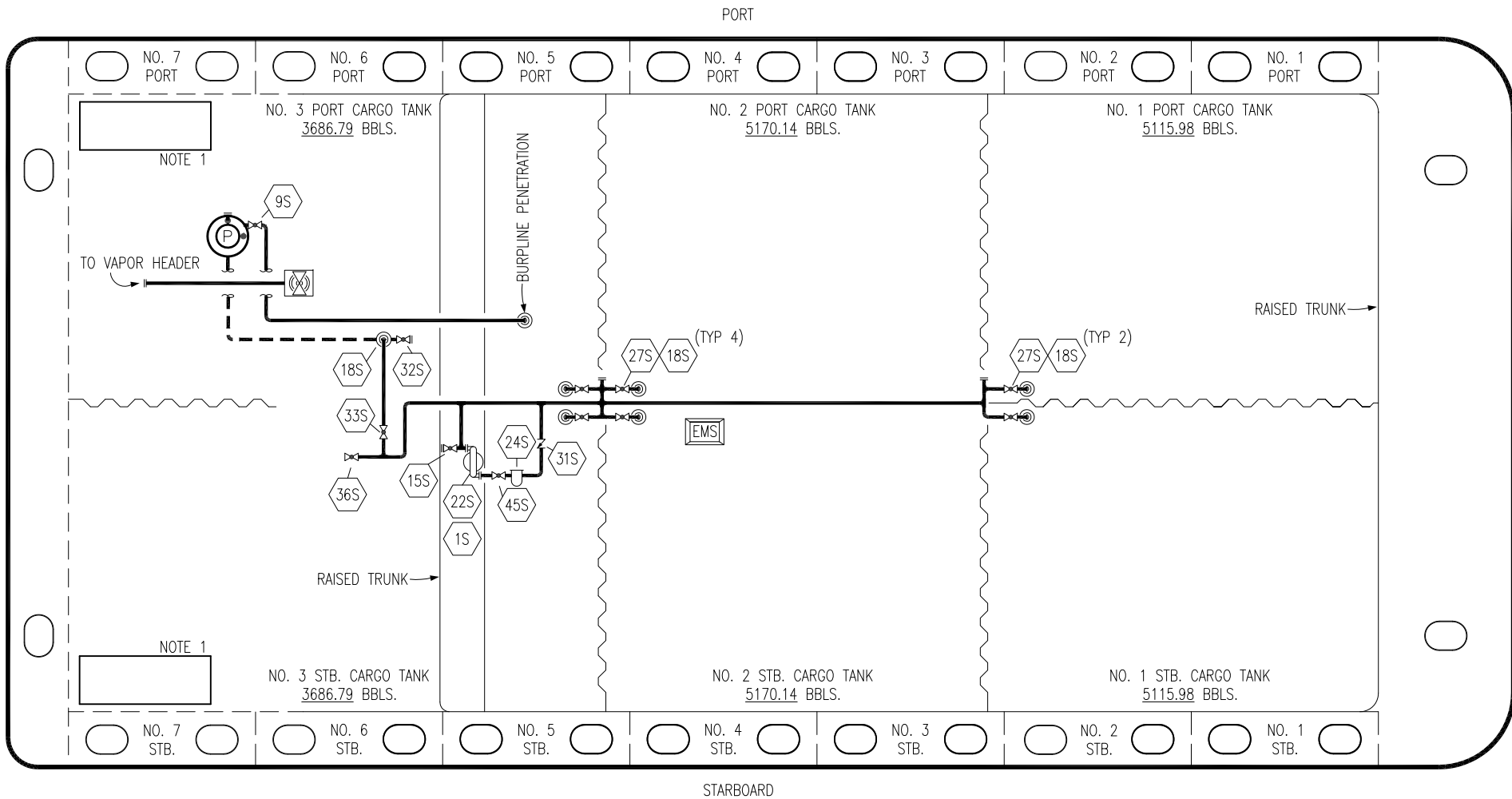


NO	DESCRIPTION	NO	DESCRIPTION
7V	8" HEADER VALVE	28V	DOCK CONNECTION ALARM
8V	8" VENT STACK VALVE	38V	8" VAPOR PENETRATION
10V	HIGH LEVEL/OVERFILL ALARM	39V	PRESSURE/VACUUM VALVE
11V	1-METER GAUGE STICK	50V	8" VAPOR HEADER
16V	VAPOR VENT STACK	51V	8" VAPOR PIPELINE
19V	EMERGENCY ENGINE SHUT DOWN	59V	PRESS/VAC GAUGE
21V	2" HERMETIC GAUGE	—	ABOVE DECK PIPING

NOTE 2: TYPICAL RIGGING IN EACH TANK

NOTE 1: CONTAINMENT P/S

KIRBY INLAND MARINE						
VAPOR						
PIPING FLOW DIAGRAM						
			HTCO 3013			REV. 0
0 04/09/20 MRV DDA		ISSUED FOR APPROVAL		SCALE: NONE		PAGE: 2 OF 3
REV.	DATE	BY	CHK	APP	REVISION DESCRIPTION	



- |     |                            |       |                              |
|-----|----------------------------|-------|------------------------------|
| NO  | DESCRIPTION                | NO    | DESCRIPTION                  |
| 1S  | SLOP TANK                  | 31S   | CHECK VALVE                  |
| 9S  | BURP VALVE                 | 32S   | PUMP WELL PRIMER VALVE       |
| 15S | DISCHARGE VALVE            | 33S   | PUMP WELL SUCTION            |
| 16S | REMOTE SUCTION CONNECTION  | 36S   | STRIPPING PUMP DISCHARGE     |
| 18S | TYP. STRIPPING PENETRATION | 44S   | STRIPPING PUMP SUCTION       |
| 22S | STRIPPING PUMP             | 45S   | STRIPPING PUMP SUCTION VALVE |
| 24S | BASKET STRAINER            | —     | ABOVE DECK PIPING            |
| 27S | SUMP SUCTION VALVE         | - - - | BELOW DECK PIPING            |

NOTE 1: CONTAINMENT P/S

0	04/09/20	MRV	DDA	ISSUED FOR APPROVAL
REV.	DATE	BY	CHK	APP
				REVISION DESCRIPTION

KIRBY INLAND MARINE 	
<b>STRIPPING PIPING FLOW DIAGRAM</b>	
SCALE: NONE	<b>HTCO 3013</b>
PAGE: 3 OF 3	
REV. 0	REV. 0