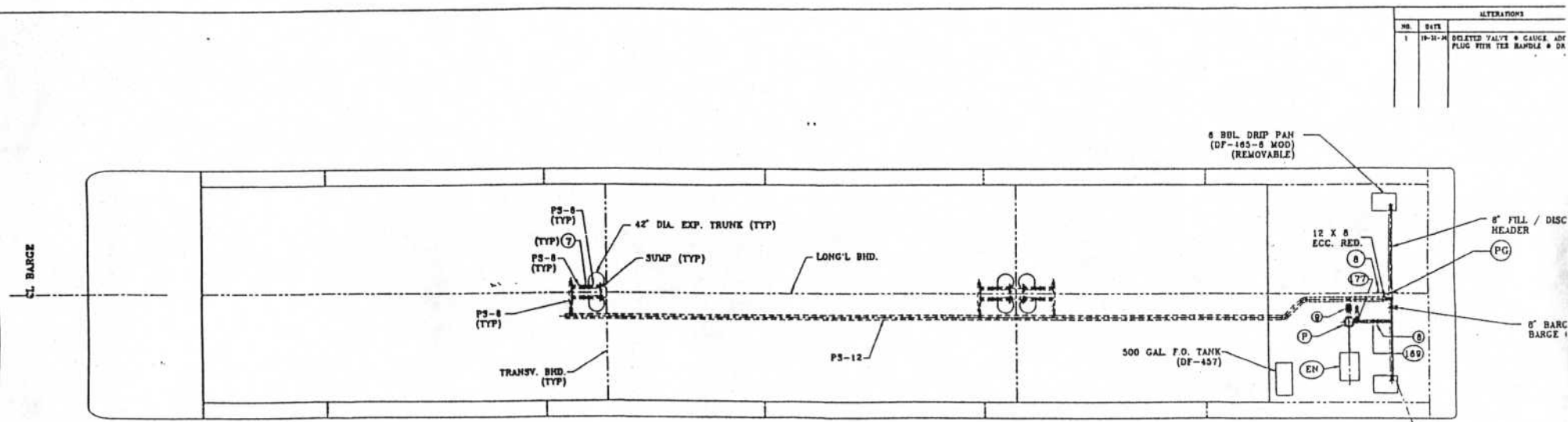


ALTERATIONS	
NO.	DATE
1	10-21-64

DELETED VALVE & GAUGE AND
PLUG WITH TEE HANDLE & DR

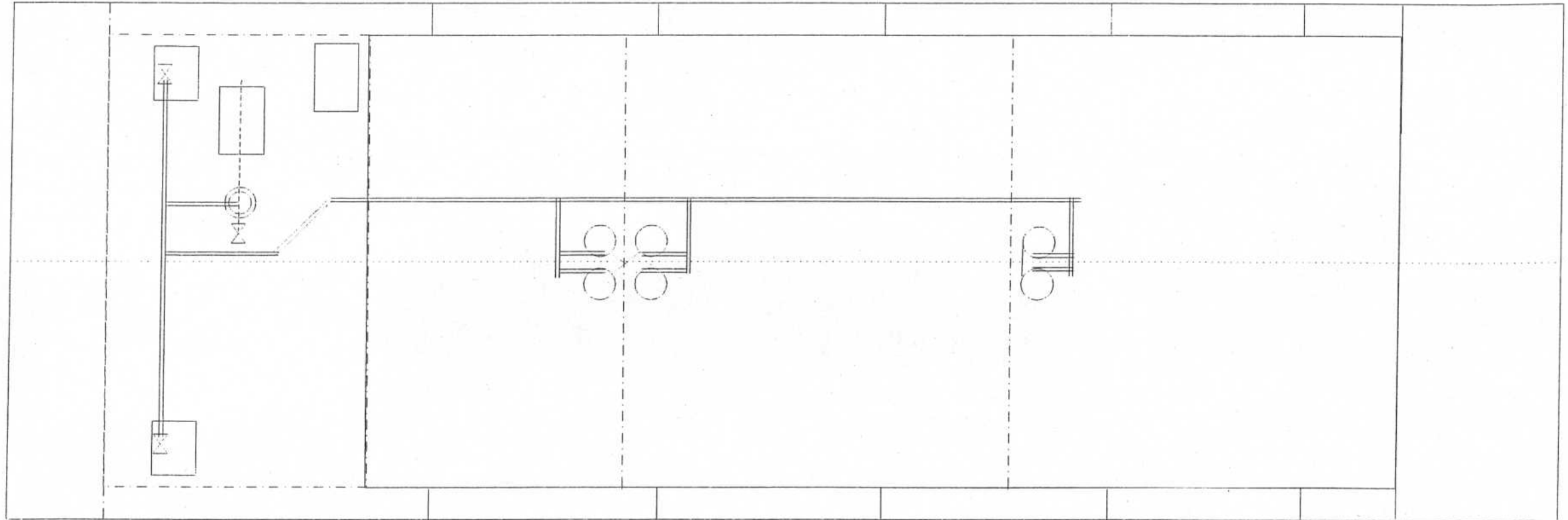


PLAN
SCALE 3/32" = 1'-0"

NOTE: BELOW DECK PIPING SHOWN AS DOTTED,
ABOVE DECK PIPING SHOWN AS SOLID.

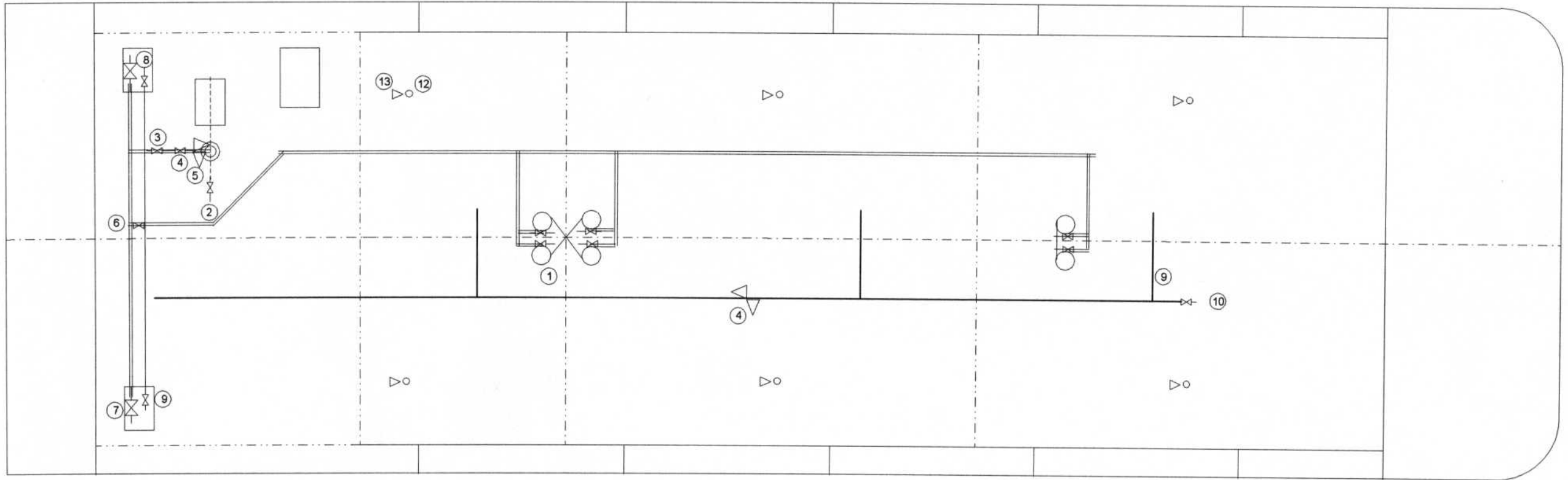
CARGO PIPING
HTCO 3009
HTCO 3010

HIGMAN BARGE LINES, INC.
HTCO - 3010
CARGO PIPING



NOTE: BELOW DECK PIPING SHOWN AS DOTTED
BELOW DECK PIPING SHOWN AS SOLID

HIGMAN BARGE LINES, INC.
HTCO - 3009, AND HTCO - 3010
CARGO AND VAPOR SYSTEM



CARGO SYSTEM VALVES

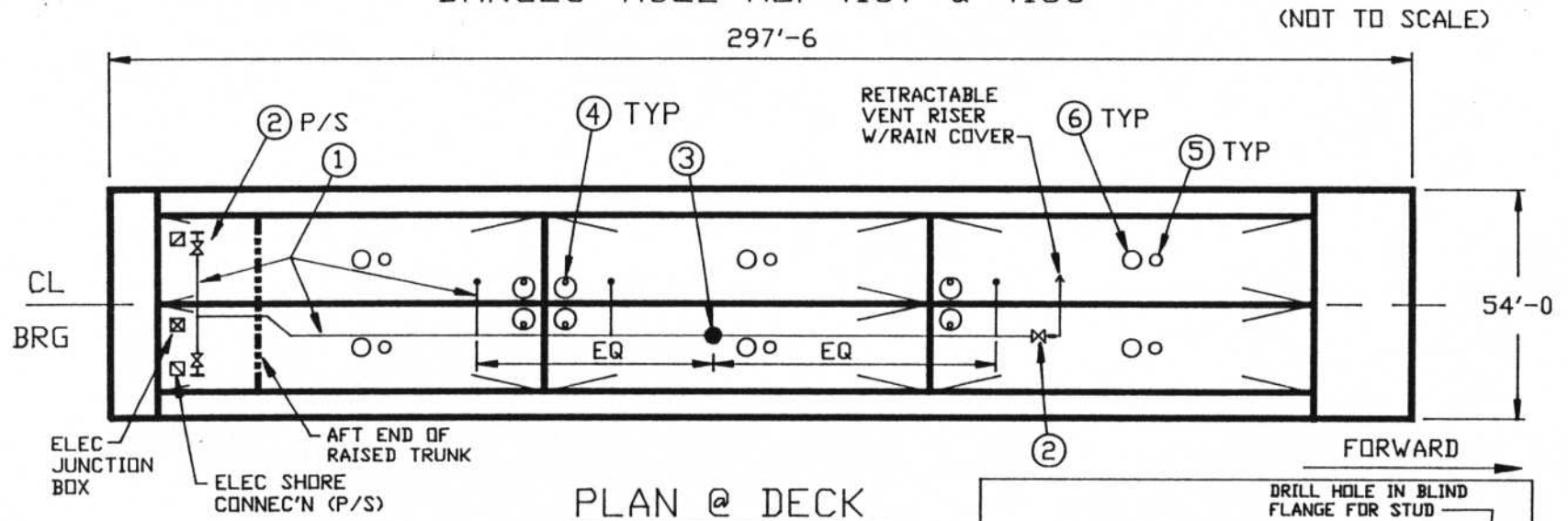
1. TANK VALVES
2. PUMP SUCTION VALVE
3. PUMP DISCHARGE VALVE
4. PUMP DISCHARGE CHECK VALVE
5. PUMP RELIEF VALVE
6. LOADING VALVE
7. HEADER VALVE
8. DRIP PAN

PV HEADER VALVES

9. HEADER VALVE
10. VENT STACK
11. PV VALVE
12. STICK GAUGE
13. ELEC. ALARM

HIGMAN TOWING COMPANY

BARGES: HULL NO. 4157 & 4158



PIECE MARK	DESCRIPTION
1	PIPING
2	SHUTOFF VALVE
3	PV VALVE
4	VISUAL TANK LEVEL INDICATOR (SIGHTGLASS)
5	HIGH LEVEL INDICATOR (DIPSTICK)
6	HIGH LEVEL SENSOR ALARM & SHUTDOWN DEVICE

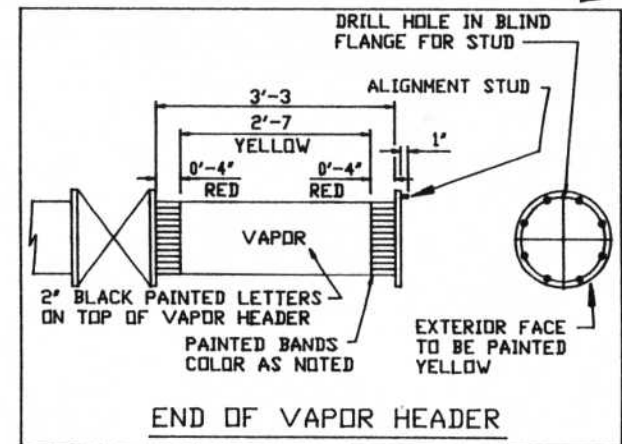
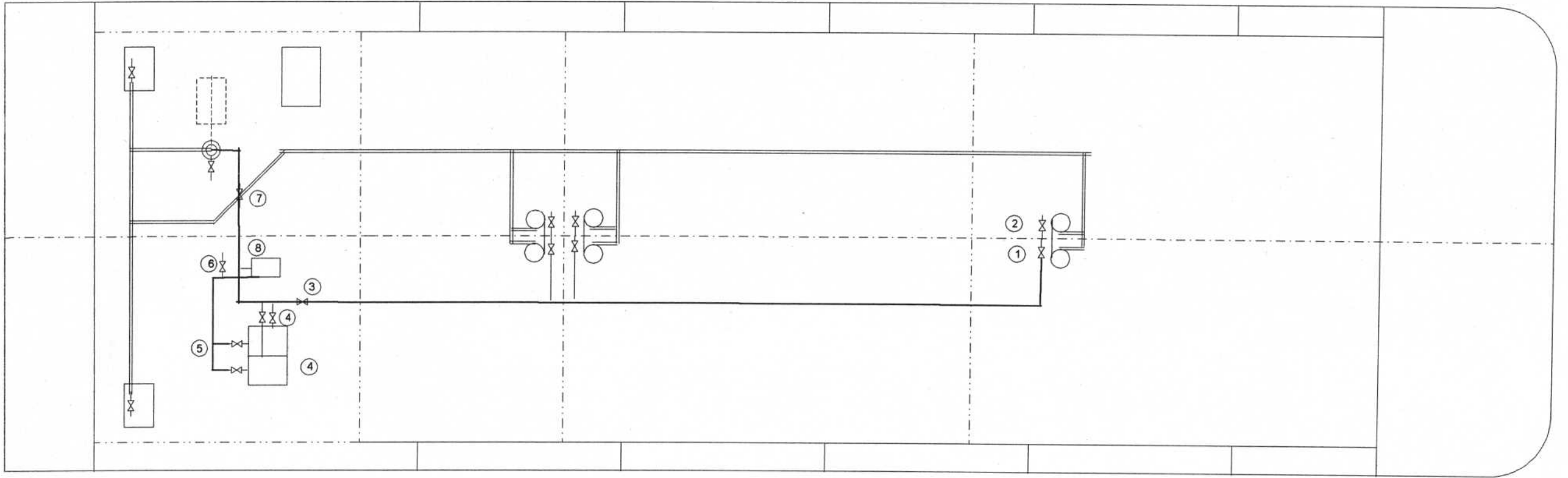


DIAGRAM OF VAPOR CONTROL SYSTEM
FIGURE 1

HIGMAN BARGE LINES, INC.
HTCO - 3009, AND HTCO - 3010
STRIPPING SYSTEM



1. TANK VALVE
2. PIPELINE STRIPPING VALVE
3. BLOCK VALVE
4. SLOP TANK STRIPPING VALVE
5. SLOP TANK LOADING VALVE
6. SHORE DISCHARGE
7. DEEP WELL DRAIN
8. PUMP
9. SLOP TANK