


- | | |
|----|----------------------|
| NO | DESCRIPTION |
| 1C | 8" CARGO TANK VALVE |
| 2C | LOAD VALVE |
| 3C | MASTER SUCTION VALVE |
| 4C | 8" DISCHARGE VALVE |
| 5C | 8" HEADER VALVE |
| 6C | 8" SALVAGE VALVE |
| 8C | 8" RELIEF VALVE |
| 9C | CHECK VALVE |

- | | |
|-------|--|
| NO | DESCRIPTION |
| 12C | 1 1/2" BURP VALVE RETURN TO CARGO TANK |
| 13C | 8" CARGO PIPING BLOCK VALVE |
| 15C | 1 1/2" BYPASS VALVE (AROUND CHECK VALVE) |
| 19C | 8" CARGO HEADER |
| 20C | 8" DUMMY HEADER PIPING |
| 21C | 8" DUMMY HEADER VALVE |
| — | ABOVE DECK PIPING |
| - - - | BELOW DECK PIPING |

REV.	DATE	BY	CHK	REVISION DESCRIPTION
2	09/16/23	MRV	DDA	REVISED PER CLIENT COMMENTS
1	09/04/18	WFB		REVISED PER CLIENT COMMENTS
0	01/13/09	LT	OF	APPROVED

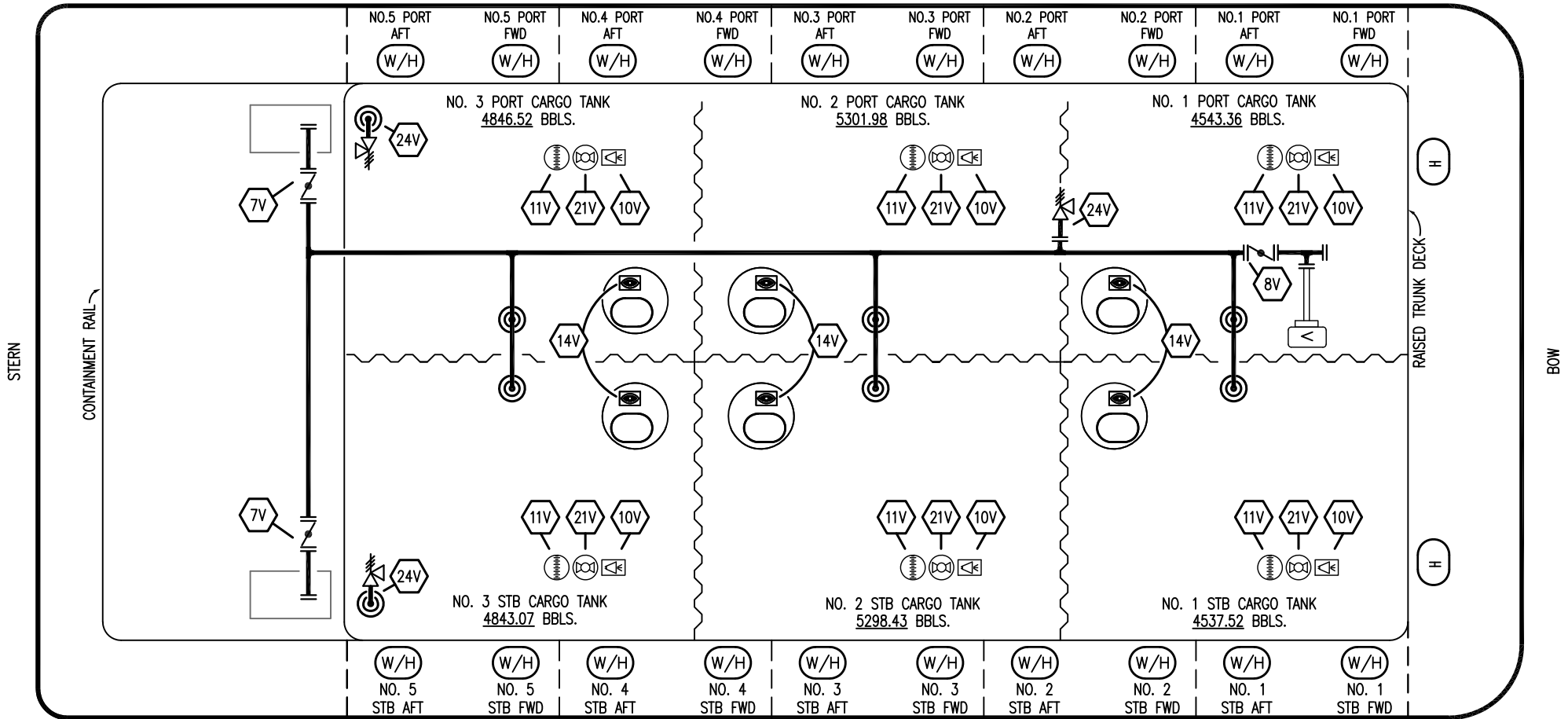


KIRBY INLAND MARINE

CARGO DIAGRAM

HFL 406

SCALE: NONE		REV. 2
PAGE: 1 OF 3		



LEGEND

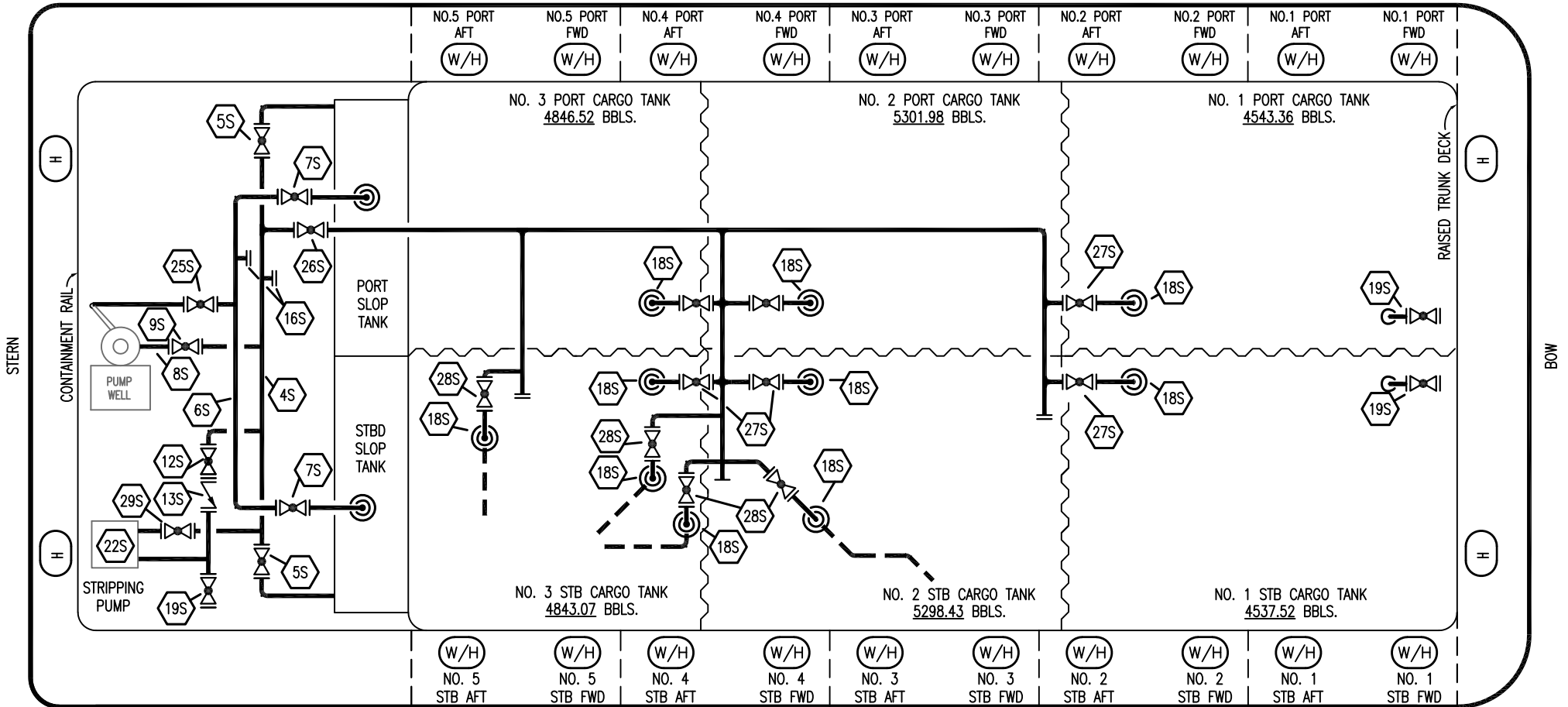
- | | |
|-----|-----------------------------------|
| NO | DESCRIPTION |
| 7V | 8" HEADER VALVE |
| 8V | 6" VENT STACK VALVE |
| 10V | 1" HIGH LEVEL/OVERFILL ALARM |
| 11V | GAUGE STICK |
| 14V | SIGHT GLASS |
| 21V | HERMETIC GAUGE |
| 24V | 2 1/2" PV VALVE 1.5 PSI/.5 VACUUM |
| — | ABOVE DECK PIPING |

1	09/16/23	MRV	DDA	REVISED PER CLIENT COMMENTS	
0	01/13/09	LT	OF	APPROVED	
REV.	DATE	BY	CHK	REVISION DESCRIPTION	

KIRBY INLAND MARINE

VAPOR DIAGRAM


SCALE: NONE	HFL 406	REV. 1
PAGE: 2 OF 3		



- | | | | | | |
|-----|--------------------------------|-----|-----------------------|-----|--------------------------------|
| NO | DESCRIPTION | NO | DESCRIPTION | NO | DESCRIPTION |
| 1S | SLOP TANK | 16S | 2" SUCTION CONNECTION | 25S | 2" DISCHARGE TO PUMPWELL |
| 2S | 1 1/2" CARGO TANK VALVE | 18S | 2" STRIPPING DROP | 26S | 2" STRIPPER HEADER BLOCK VALVE |
| 3S | MAIN CARGO PIPING VALVE | 19S | 1" BUTTERWORTH HEADER | 27S | 1 1/2" SUMP SUCTION |
| 4S | 2" SLOP TANK SUCTION PIPING | 22S | STRIPPING PUMP | 28S | 1 1/2" CARGO HEADER VALVE |
| 5S | 2" SLOP TANK SUCTION VALVE | 24S | BASKET STRAINER | 29S | 2" STRIPPING SUCTION BLOCK |
| 6S | 2" SLOP TANK FILL PIPING | | | | |
| 7S | 2" SLOP TANK VALVE | | | | |
| 8S | 2" PIPING TO FILL DEEP WELL | | | | |
| 9S | 1 1/2" FILL DEEP WELL VALVE | | | | |
| 12S | 2" RETURN TO CARGO TANK VALVE | | | | |
| 13S | 2" RETURN TO CARGO CHECK VALVE | | | | |

— ABOVE DECK PIPING
 - - - BELOW DECK PIPING

REV.	DATE	BY	CHK	REVISION DESCRIPTION
1	09/16/23	MRV	DDA	REVISED PER CLIENT COMMENTS
0	01/13/09	LT	OF	APPROVED

KIRBY INLAND MARINE 

STRIPPING DIAGRAM

SCALE: NONE

HFL 406

PAGE: 3 OF 3

REV. **1**