

**NO DESCRIPTION**

- 1C 8" CARGO TANK VALVE
- 2C LOAD VALVE
- 3C MASTER SUCTION VALVE
- 4C 8" DISCHARGE VALVE
- 5C 8" HEADER VALVE
- 6C 8" SALVAGE VALVE
- 8C 8" RELIEF VALVE
- 9C CHECK VALVE

**NO DESCRIPTION**

- 12C 1 1/2" BURP VALVE RETURN TO CARGO TANK
- 13C 8" CARGO PIPING BLOCK VALVE
- 15C 1 1/2" BYPASS VALVE (AROUND CHECK VALVE)
- 19C 8" CARGO HEADER
- 20C 8" DUMMY HEADER PIPING
- 21C 8" DUMMY HEADER VALVE
- ABOVE DECK PIPING
- - - BELOW DECK PIPING

0	09/28/18	MRV	OF	ISSUED FOR APPROVAL	
REV.	DATE	BY	CHK	REVISION DESCRIPTION	

**KIRBY INLAND MARINE**

**CARGO DIAGRAM**



SCALE: NONE

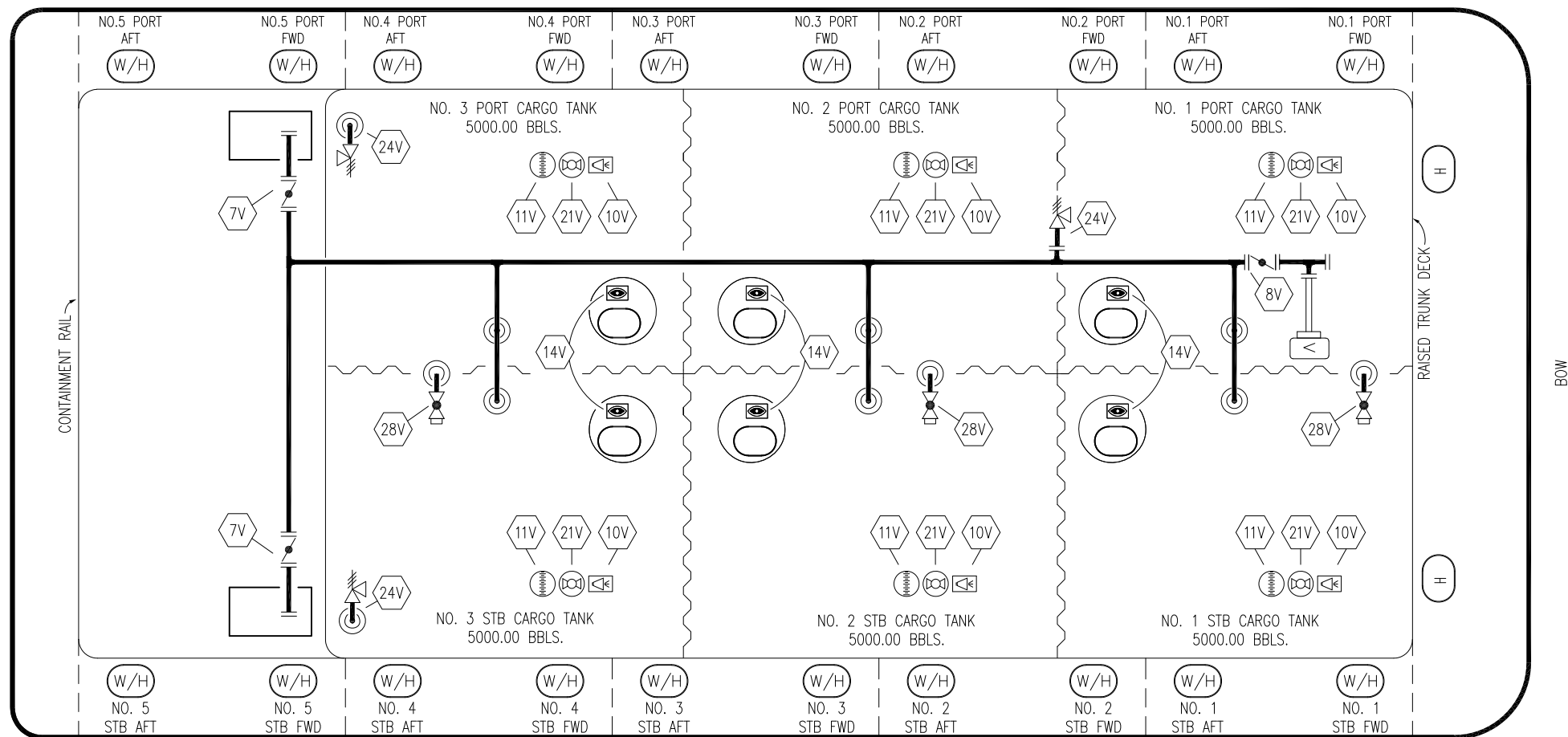
PAGE: 1 OF 3

**HFL 404**

REV.

**0**

STERN



## LEGEND

NO	DESCRIPTION
7V	8" HEADER VALVE
8V	6" VENT STACK VALVE
10V	1" HIGH LEVEL/OVERFILL ALARM
11V	GAUGE STICK
14V	SIGHT GLASS
21V	HERMETIC GAUGE
24V	2 1/2" PV VALVE 1.5 PSI/.5 VACUUM
28V	12" SPILL VALVE (FUTURE)
—	ABOVE DECK PIPING

0	09/28/18	MRV	OF	ISSUED FOR APPROVAL	
REV.	DATE	BY	CHK	REVISION	DESCRIPTION

KIRBY INLAND MARINE



## VAPOR DIAGRAM

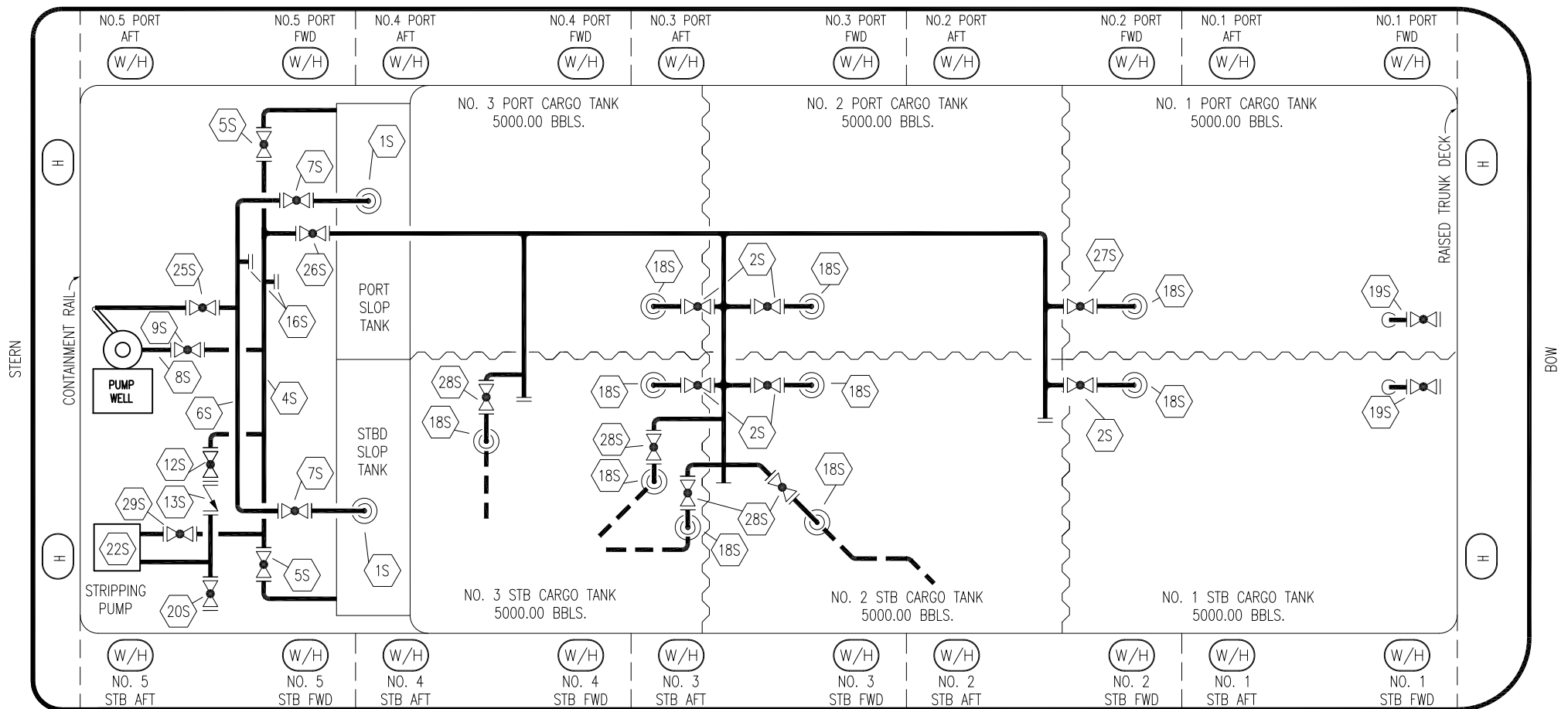
SCALE: NONE

PAGE: 2 OF 3

HFL 404

REV.

0




NO	DESCRIPTION
1S	SLOP TANK
2S	1 1/2" CARGO TANK VALVE
3S	MAIN CARGO PIPING VALVE
4S	2" SLOP TANK SUCTION PIPING
5S	2" SLOP TANK SUCTION VALVE
6S	2" SLOP TANK FILL PIPING
7S	2" SLOP TANK VALVE
8S	2" PIPING TO FILL DEEP WELL
9S	1 1/2" FILL DEEP WELL VALVE
12S	2" RETURN TO CARGO TANK VALVE
13S	2" RETURN TO CARGO CHECK VALVE

NO	DESCRIPTION
16S	2" SUCTION CONNECTION
18S	2" STRIPPING DROP
19S	1" BUTTERWORTH HEADER
20S	2" BUTTERWORTH HEADER
22S	STRIPPING PUMP
24S	BASKET STRAINER

NO	DESCRIPTION
25S	2" DISCHARGE TO PUMPWELL
26S	2" STRIPPER HEADER BLOCK VALVE
27S	1 1/2" SUMP SUCTION
28S	1 1/2" CARGO HEADER VALVE
29S	2" STRIPPING SUCTION BLOCK

— ABOVE DECK PIPING  
 --- BELOW DECK PIPING

0	09/28/18	MRV	OF	ISSUED FOR APPROVAL	
REV.	DATE	BY	CHK	REVISION DESCRIPTION	

KIRBY INLAND MARINE		
STRIPPING DIAGRAM		
SCALE: NONE	HFL 404	REV.
PAGE: 3 OF 3		0