

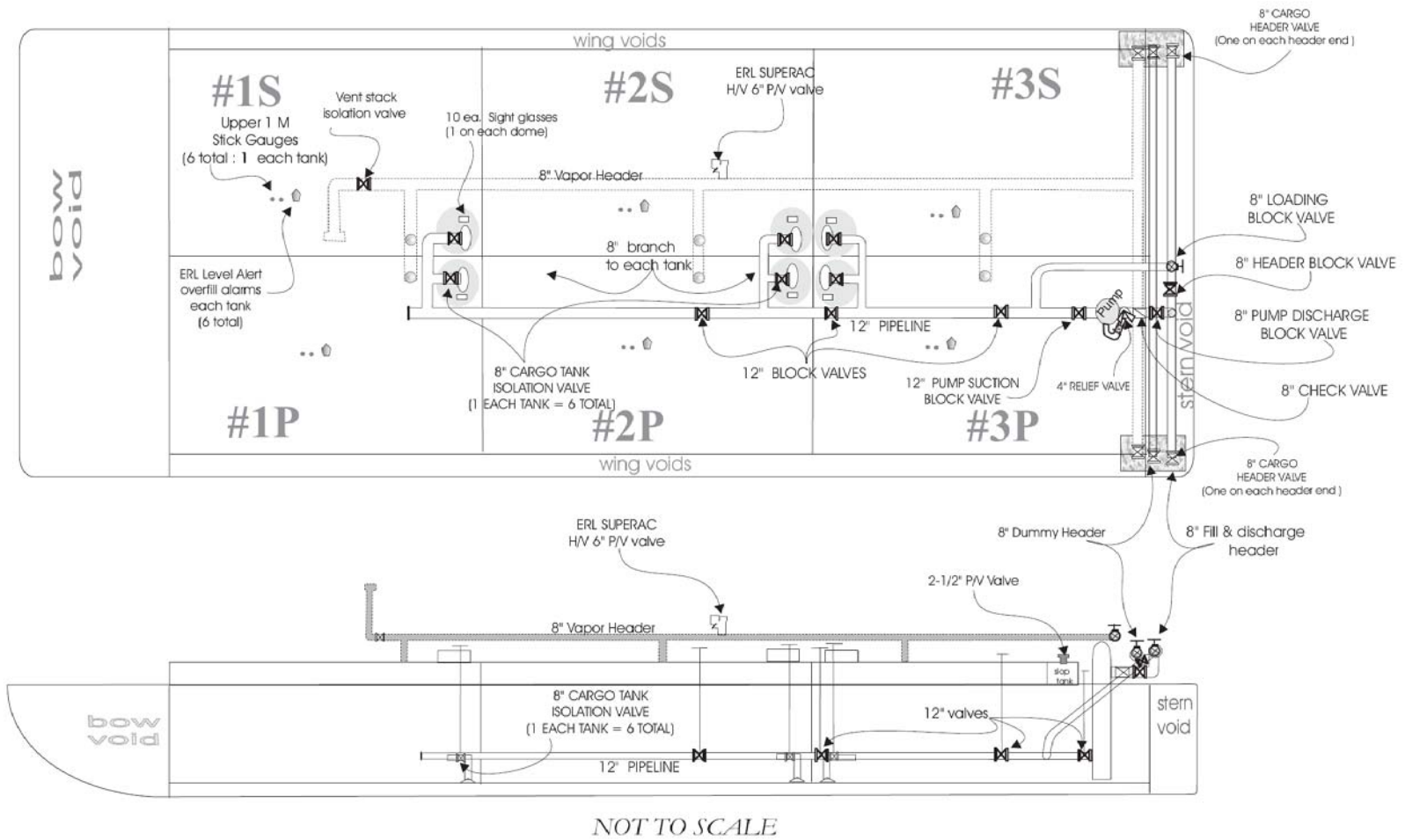
Hines Furlong Line, Inc.  
**HFL 403 CARGO TRANSFER PROCEDURES**

**CARGO PIPING DIAGRAM**

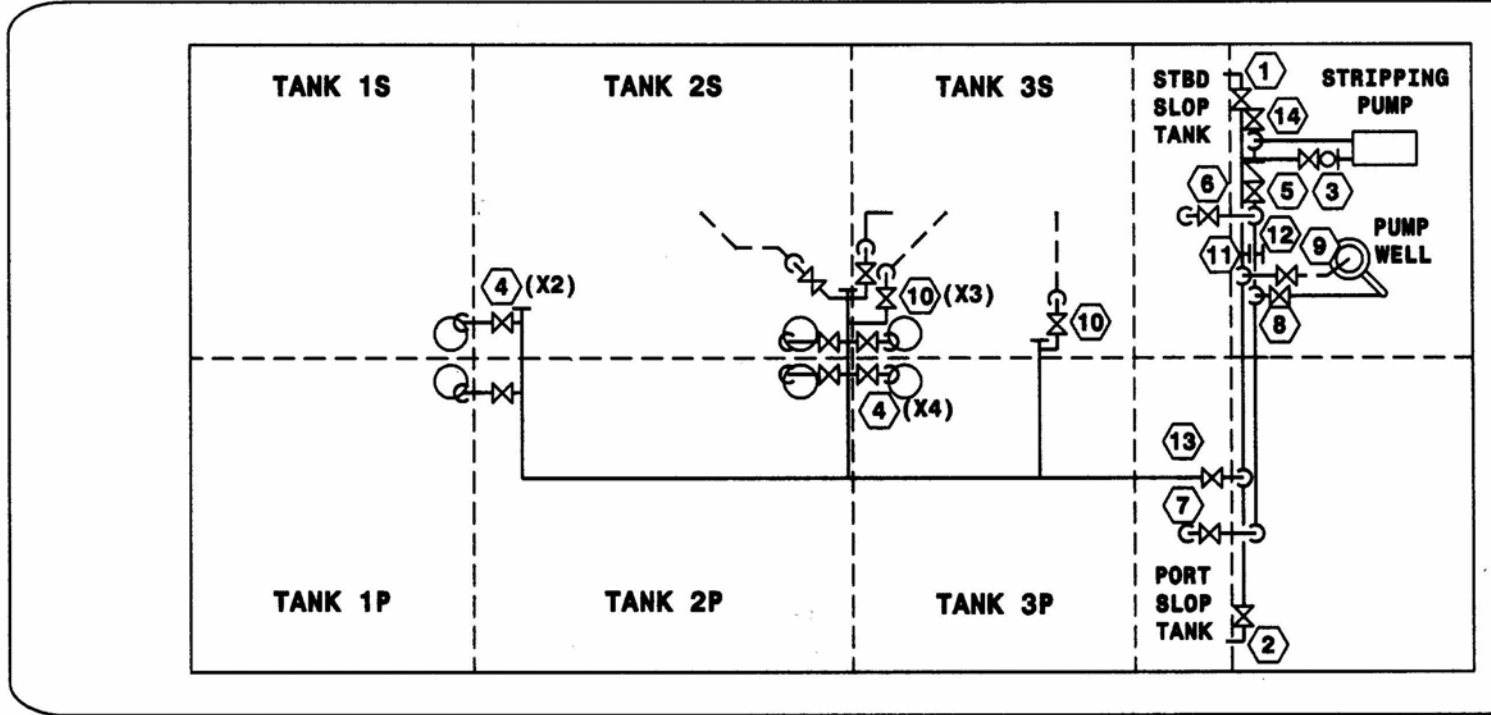
pipng diagram  
 297 x 54 - DOUBLE HULL

8" CARGO  
 HEADER VALVE

OPEN to pump  
 CLOSE to load  
 CLOSE to pump  
 OPEN to load



STRIPPING PIPING DIAGRAM



**STRIPPING PIPING**

- |                                 |                                      |                                 |                             |
|---------------------------------|--------------------------------------|---------------------------------|-----------------------------|
| ① 1 1/2" STBD SLOP TANK SUCTION | ⑤ 2" STRIPPING PUMP DISCHARGE        | ⑨ 1 1/2" PUMPWELL SUCTION       | ⑬ 2" STRIPPING HEADER BLOCK |
| ② 1 1/2" PORT SLOP TANK SUCTION | ⑥ 2" STBD SLOP TANK FILL             | ⑩ 1 1/2" CARGO HEADER STRIPPING |                             |
| ③ 2" STRIPPING SUCTION BLOCK    | ⑦ 2" PORT SLOP TANK FILL             | ⑪ 2" SUCTION HOSE CONNECTION    |                             |
| ④ 1 1/2" SUMP SUCTION           | ⑧ 2" STRIPPING DISCHARGE TO PUMPWELL | ⑫ 2" DISCHARGE HOSE CONNECTION  |                             |

Hines Furlong Line, Inc.  
**HFL 403 CARGO TRANSFER PROCEDURES**

**VAPOR CONTROL SYSTEM**

155.750 (c) (1) VAPOR COLLECTION SYSTEM LINE DIAGRAMS

