

- |           |                          |           |                    |
|-----------|--------------------------|-----------|--------------------|
| <b>NO</b> | <b>DESCRIPTION</b>       | <b>NO</b> | <b>DESCRIPTION</b> |
| 1C        | CARGO TANK VALVE         | 35C       | CROSSOVER VALVE    |
| 5C        | HEADER VALVE             | 36C       | PRESSURE GAUGE     |
| 7C        | STRIPPING BLOCK VALVE    | 37C       | CARGO DROP         |
| 8C        | RELIEF VALVE             |           | ABOVE DECK PIPING  |
| 13C       | CARGO PIPING BLOCK VALVE |           | BELOW DECK PIPING  |
| 19C       | CARGO HEADER             | (A)       | AUTOMATIC          |
| 30C       | CARGO PIPELINE           | (M)       | MANUAL             |
| 34V       | LIQUID SPRAY BAR         |           |                    |

0	/	/	/		ISSUED FOR APPROVAL
REV.	DATE	BY	CHK	APP	REVISION DESCRIPTION

**KIRBY INLAND MARINE**

**CARGO**

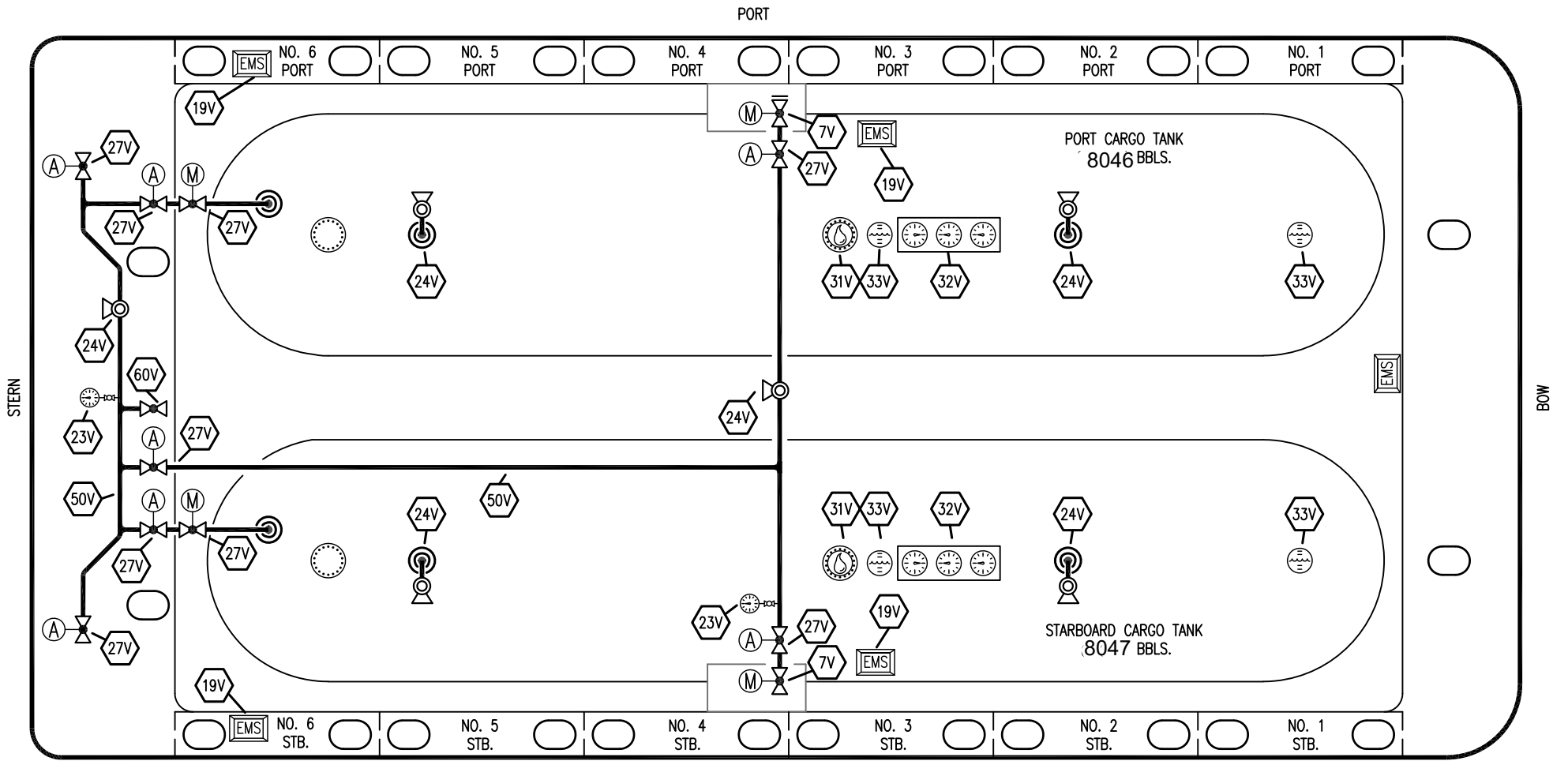
**PIPING FLOW DIAGRAM**

SCALE: NONE

**FMT 2076**

REV. **0**

PAGE: 1 OF 2



- |           |                            |           |                    |
|-----------|----------------------------|-----------|--------------------|
| <b>NO</b> | <b>DESCRIPTION</b>         | <b>NO</b> | <b>DESCRIPTION</b> |
| 5V        | BLOCK VALVE                | 38V       | VAPOR DROP (⊙)     |
| 7C        | STRIPPING BLOCK VALVE      | 50V       | VAPOR HEADER       |
| 7V        | HEADER VALVE               | 60V       | CROSSOVER VALVE    |
| 19V       | EMERGENCY ENGINE SHUT DOWN | —         | ABOVE DECK PIPING  |
| 23V       | PRESSURE GAUGE             | (A)       | AUTOMATIC          |
| 24V       | PRESSURE RELIEF VALVE      | (M)       | MANUAL             |
| 27V       | VALVE                      |           |                    |
| 31V       | SAMPLE                     |           |                    |
| 32V       | MDS TRIO                   |           |                    |
| 33V       | DIGITAL FLOAT LEVEL GAUGE  |           |                    |

0						ISSUED FOR APPROVAL
REV.	DATE	BY	CHK	APP	REVISION	DESCRIPTION

**KIRBY INLAND MARINE**

**VAPOR  
PIPING FLOW DIAGRAM**

SCALE: NONE	<b>FMT 2076</b>
PAGE: 2 OF 2	

REV. **0**