

- | | | | |
|-----------|--------------------------|-----------|--------------------|
| NO | DESCRIPTION | NO | DESCRIPTION |
| 1C | CARGO TANK VALVE | 35C | CROSSOVER VALVE |
| 5C | HEADER VALVE | 36C | PRESSURE GAUGE |
| 7C | STRIPPING BLOCK VALVE | 37C | CARGO DROP |
| 8C | RELIEF VALVE | | ABOVE DECK PIPING |
| 13C | CARGO PIPING BLOCK VALVE | | BELOW DECK PIPING |
| 19C | CARGO HEADER | (A) | AUTOMATIC |
| 30C | CARGO PIPELINE | (M) | MANUAL |
| 34V | LIQUID SPRAY BAR | | |

0	/	/	/		ISSUED FOR APPROVAL
REV.	DATE	BY	CHK	APP	REVISION DESCRIPTION

KIRBY INLAND MARINE

CARGO

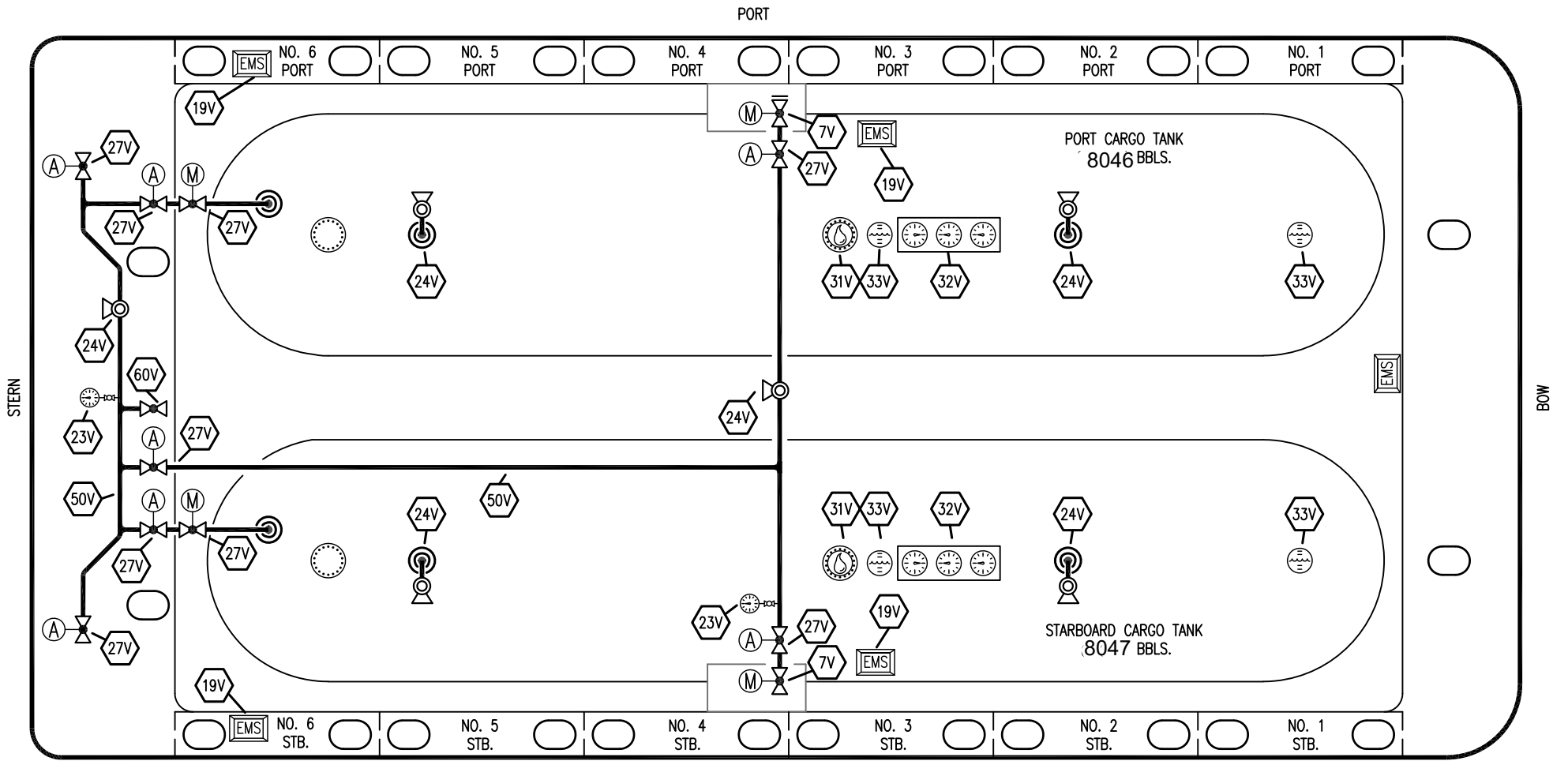
PIPING FLOW DIAGRAM

SCALE: NONE

FMT 2074

REV. **0**

PAGE: 1 OF 2



- | | | | |
|-----------|----------------------------|-----------|--------------------|
| NO | DESCRIPTION | NO | DESCRIPTION |
| 5V | BLOCK VALVE | 38V | VAPOR DROP (⊙) |
| 7C | STRIPPING BLOCK VALVE | 50V | VAPOR HEADER |
| 7V | HEADER VALVE | 60V | CROSSOVER VALVE |
| 19V | EMERGENCY ENGINE SHUT DOWN | — | ABOVE DECK PIPING |
| 23V | PRESSURE GAUGE | (A) | AUTOMATIC |
| 24V | PRESSURE RELIEF VALVE | (M) | MANUAL |
| 27V | VALVE | | |
| 31V | SAMPLE | | |
| 32V | MDS TRIO | | |
| 33V | DIGITAL FLOAT LEVEL GAUGE | | |

0						ISSUED FOR APPROVAL
REV.	DATE	BY	CHK	APP	REVISION	DESCRIPTION

KIRBY INLAND MARINE

VAPOR
PIPING FLOW DIAGRAM

SCALE: NONE	FMT 2074	REV. 0
PAGE: 2 OF 2		