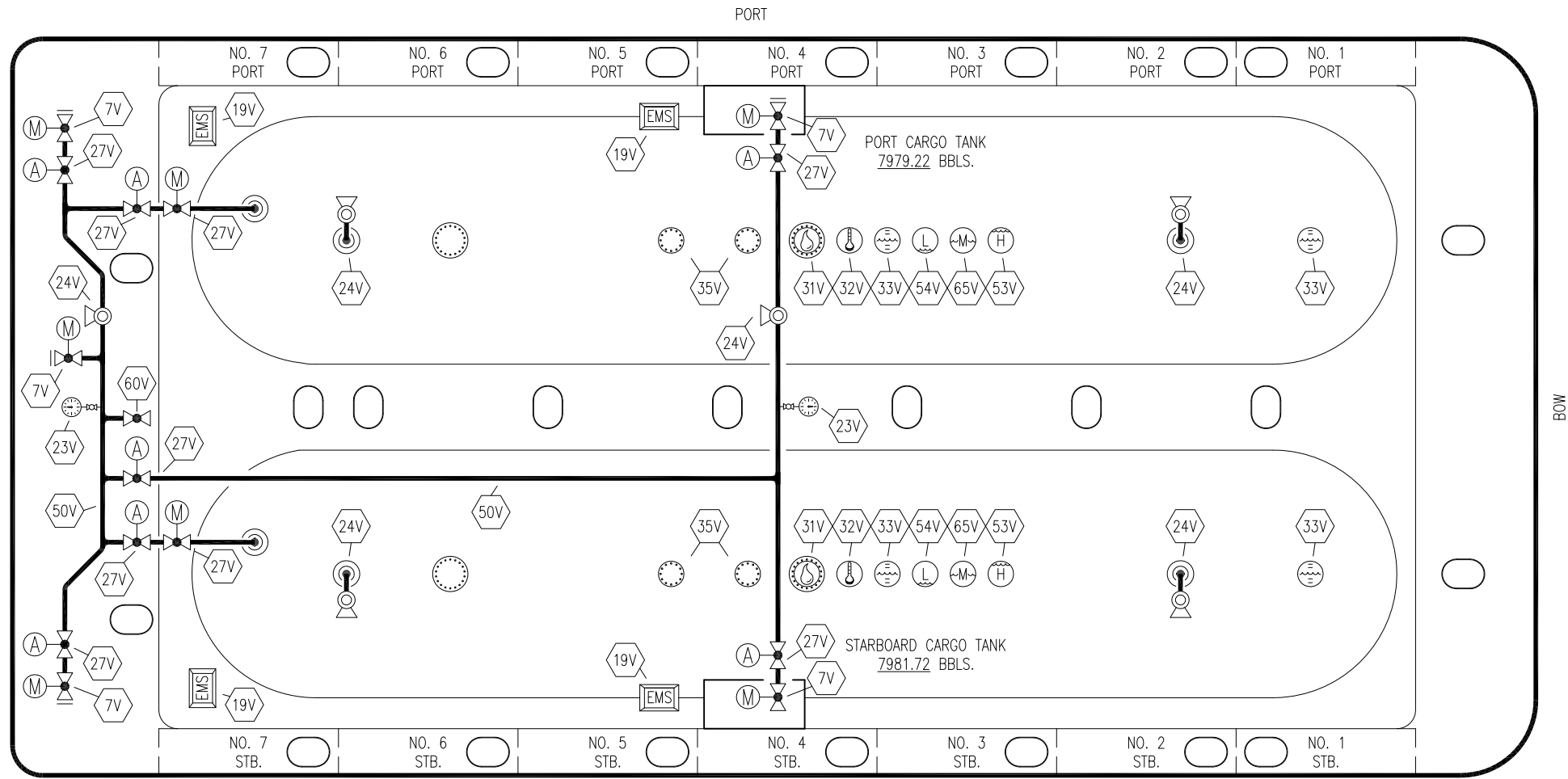


NO	DESCRIPTION	NO	DESCRIPTION
1C	CARGO TANK VALVE	35C	CROSSOVER VALVE
5C	HEADER VALVE	36C	PRESSURE GAUGE
8C	RELIEF VALVE	37C	CARGO DROP
13C	CARGO PIPING BLOCK VALVE		ABOVE DECK PIPING
19C	CARGO HEADER		BELOW DECK PIPING
30C	CARGO PIPELINE	(A)	AUTOMATIC
		(M)	MANUAL

0	07/29/20	DLW	DDA	CW	ISSUED FOR APPROVAL
REV.	DATE	BY	CHK	APP	REVISION DESCRIPTION

CARGO PIPING FLOW DIAGRAM	
SCALE: NONE PAGE: 1 OF 2	FMT 2066
REV. 0	



NO	DESCRIPTION	NO	DESCRIPTION
7V	HEADER VALVE	50V	VAPOR HEADER
19V	EMERGENCY VALVE SHUTDOWN STATION	53V	HIGH LEVEL GAUGE
23V	PRESSURE GAUGE	54V	LOW LEVEL GAUGE
24V	PRESSURE RELIEF VALVE	60V	CROSSOVER VALVE
27V	VALVE	65V	MID LEVEL GAUGE
31V	SAMPLE	—	ABOVE DECK PIPING
32V	TEMPERATURE GAUGE	(A)	AUTOMATIC
33V	DIGITAL FLOAT LEVEL GAUGE	(M)	MANUAL
35V	SPARE (NOZZLE)		
38V	VAPOR DROP		

0	07/29/20	DLW	DDA	CW	ISSUED FOR APPROVAL
REV.	DATE	BY	CHK	APP	REVISION DESCRIPTION

KIRBY INLAND MARINE

VAPOR
PIPING FLOW DIAGRAM

SCALE: NONE	FMT 2066	REV. 0
PAGE: 2 OF 2		