

- |           |                          |           |                    |
|-----------|--------------------------|-----------|--------------------|
| <b>NO</b> | <b>DESCRIPTION</b>       | <b>NO</b> | <b>DESCRIPTION</b> |
| 1C        | CARGO TANK VALVE         | 35C       | CROSSOVER VALVE    |
| 5C        | HEADER VALVE             | 36C       | PRESSURE GAUGE     |
| 7C        | STRIPPING BLOCK VALVE    | 37C       | CARGO DROP         |
| 8C        | RELIEF VALVE             |           | ABOVE DECK PIPING  |
| 13C       | CARGO PIPING BLOCK VALVE |           | BELOW DECK PIPING  |
| 19C       | CARGO HEADER             | (A)       | AUTOMATIC          |
| 30C       | CARGO PIPELINE           | (M)       | MANUAL             |
| 34V       | LIQUID SPRAY BAR         |           |                    |

0	/	/	/		ISSUED FOR APPROVAL
REV.	DATE	BY	CHK	APP	REVISION DESCRIPTION

**KIRBY INLAND MARINE**

**CARGO**

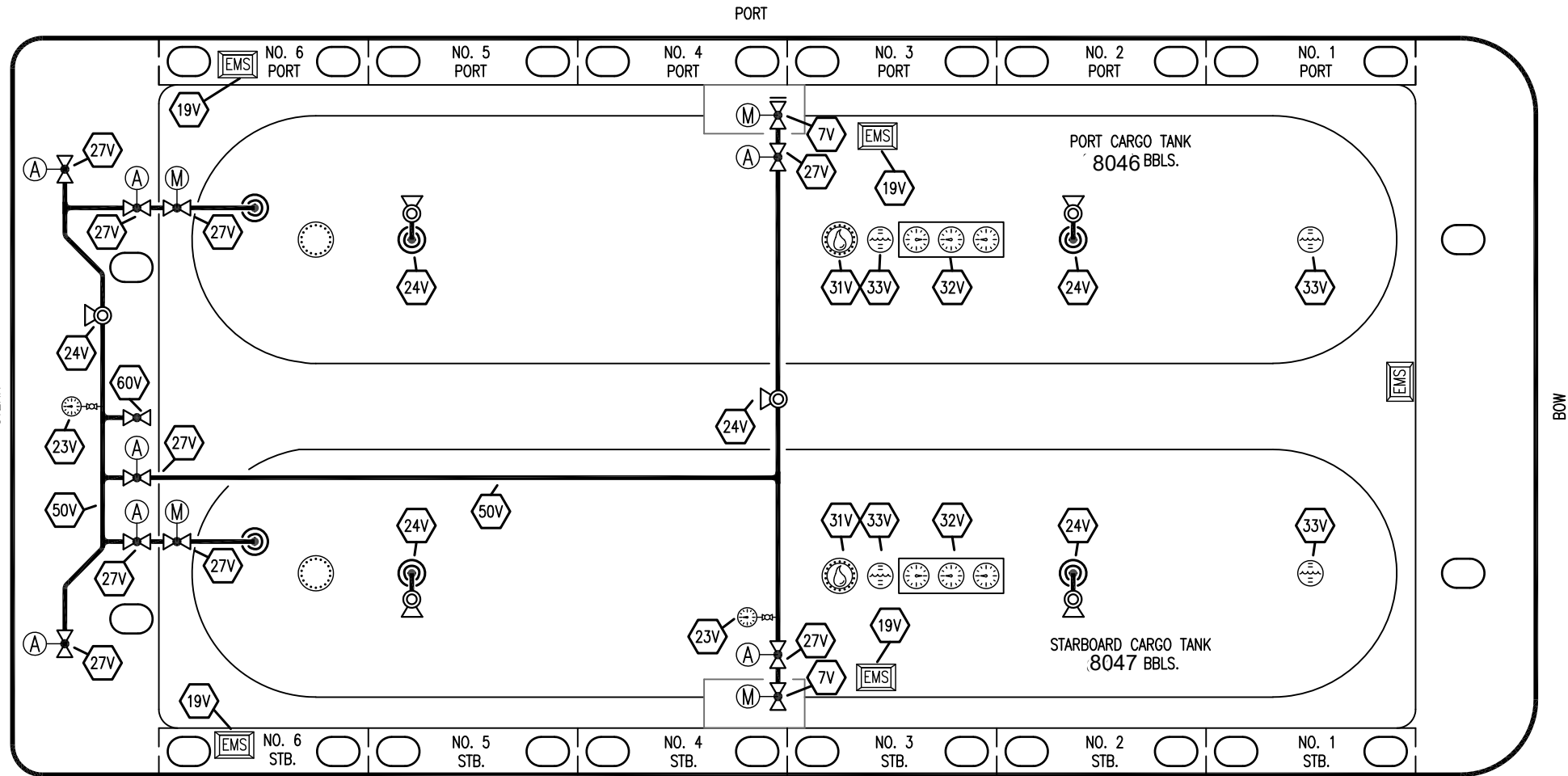
**PIPING FLOW DIAGRAM**

SCALE: NONE

**FMT 2038**

PAGE: 1 OF 2

REV. **0**



NO	DESCRIPTION	NO	DESCRIPTION
5V	BLOCK VALVE	38V	VAPOR DROP
7C	STRIPPING BLOCK VALVE	50V	VAPOR HEADER
7V	HEADER VALVE	60V	CROSSOVER VALVE
19V	EMERGENCY ENGINE SHUT DOWN	—	ABOVE DECK PIPING
23V	PRESSURE GAUGE	(A)	AUTOMATIC
24V	PRESSURE RELIEF VALVE	(M)	MANUAL
27V	VALVE		
31V	SAMPLE		
32V	MDS TRIO		
33V	DIGITAL FLOAT LEVEL GAUGE		

REV.	DATE	BY	CHK	APP	REVISION DESCRIPTION
0					ISSUED FOR APPROVAL

**KIRBY INLAND MARINE**

**VAPOR  
PIPING FLOW DIAGRAM**

SCALE: NONE	<b>FMT 2038</b>	REV. 0
PAGE: 2 OF 2		REV. <b>0</b>