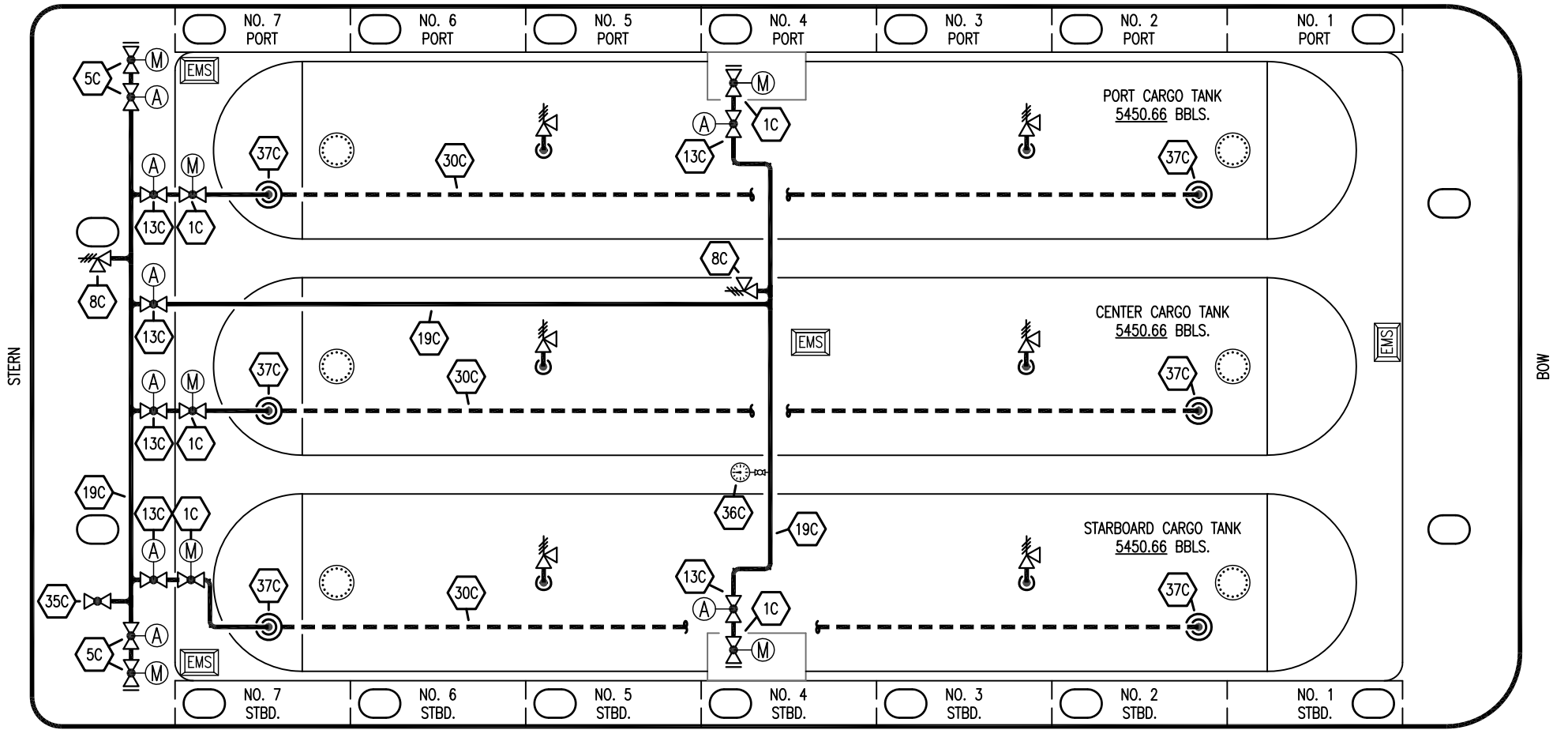


PORT

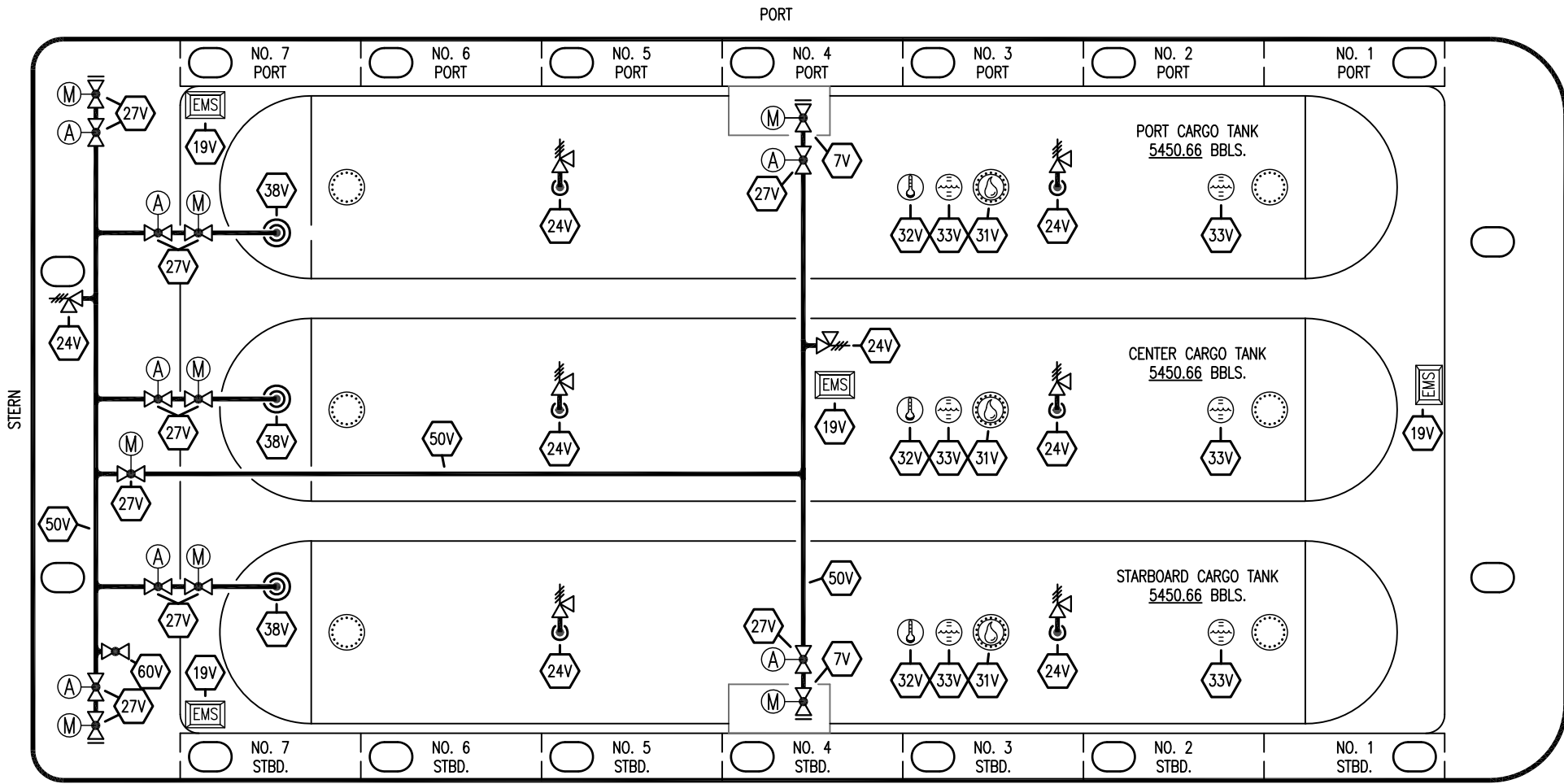


STARBOARD

- |           |                          |           |                    |
|-----------|--------------------------|-----------|--------------------|
| <b>NO</b> | <b>DESCRIPTION</b>       | <b>NO</b> | <b>DESCRIPTION</b> |
| 1C        | CARGO TANK VALVE         | 35C       | CROSSOVER VALVE    |
| 5C        | HEADER VALVE             | 36C       | PRESSURE GAUGE     |
| 7C        | STRIPPING BLOCK VALVE    | 37C       | CARGO DROP         |
| 8C        | RELIEF VALVE             |           | ABOVE DECK PIPING  |
| 13C       | CARGO PIPING BLOCK VALVE |           | BELOW DECK PIPING  |
| 19C       | CARGO HEADER             | (A)       | AUTOMATIC          |
| 30C       | CARGO PIPELINE           | (M)       | MANUAL             |
| 34V       | LIQUID SPRAY BAR         |           |                    |

0	07/11/23	MRV	DDA	CW	ISSUED FOR APPROVAL
REV.	DATE	BY	CHK	APP	REVISION DESCRIPTION

<b>KIRBY INLAND MARINE</b>	
<b>CARGO</b>	
<b>PIPING FLOW DIAGRAM</b>	
SCALE: NONE	<b>FMT 2000</b>
PAGE: 1 OF 2	
	REV. <b>0</b>



- |     |                            |     |                   |
|-----|----------------------------|-----|-------------------|
| NO  | DESCRIPTION                | NO  | DESCRIPTION       |
| 5V  | BLOCK VALVE                | 38V | VAPOR DROP        |
| 7C  | STRIPPING BLOCK VALVE      | 50V | VAPOR HEADER      |
| 7V  | HEADER VALVE               | 60V | CROSSOVER VALVE   |
| 19V | EMERGENCY ENGINE SHUT DOWN | —   | ABOVE DECK PIPING |
| 23V | PRESSURE GAUGE             | (A) | AUTOMATIC         |
| 24V | PRESSURE RELIEF VALVE      | (M) | MANUAL            |
| 27V | VALVE                      |     |                   |
| 31V | SAMPLE                     |     |                   |
| 32V | TEMPERATURE GAUGE          |     |                   |
| 33V | DIGITAL FLOAT LEVEL GAUGE  |     |                   |

0	07/11/23	MRV	DDA	CW	ISSUED FOR APPROVAL
REV.	DATE	BY	CHK	APP	REVISION DESCRIPTION

<b>KIRBY INLAND MARINE</b>	
<b>VAPOR PIPING FLOW DIAGRAM</b>	
SCALE: NONE	<b>FMT 2000</b>
PAGE: 2 OF 2	REV. <b>0</b>