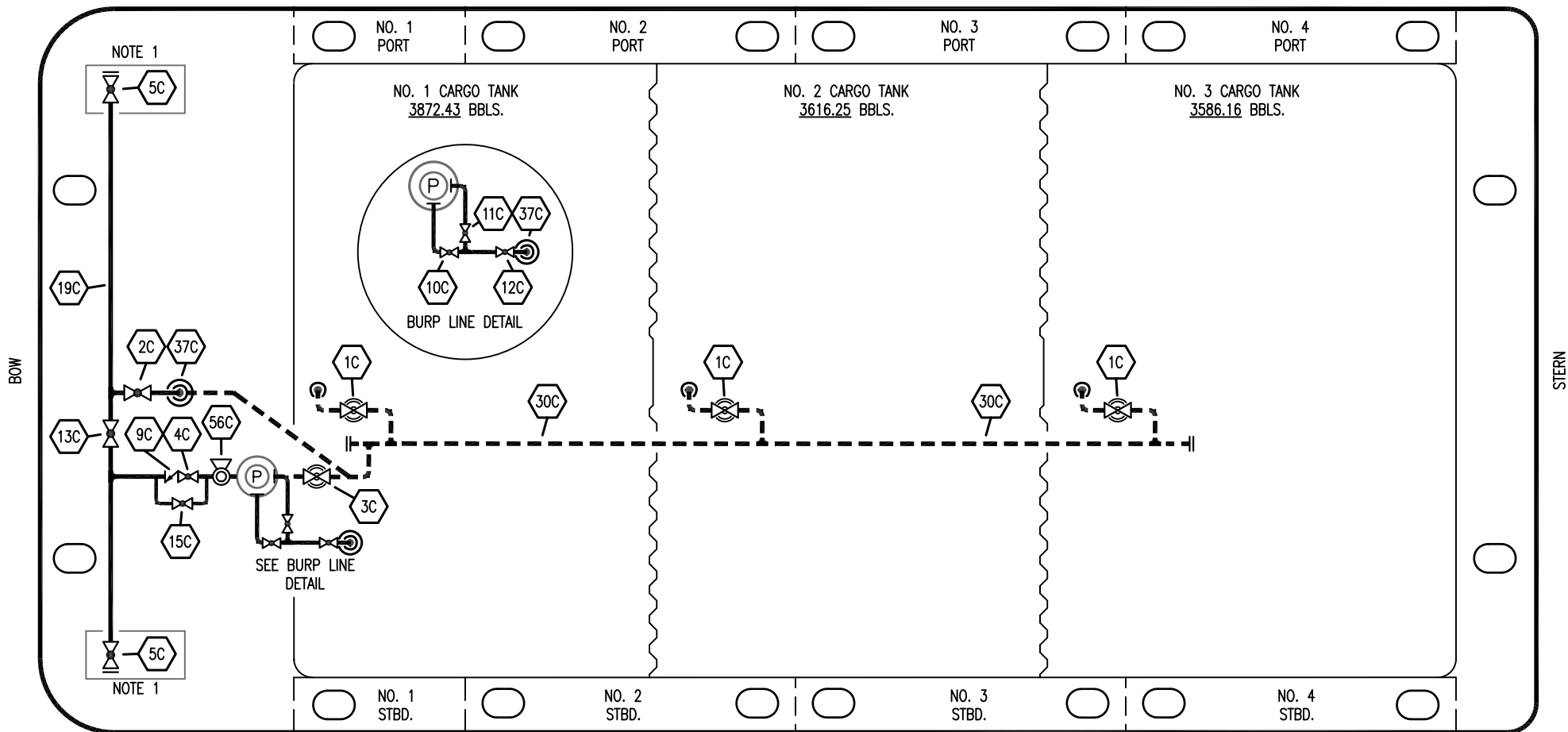


STARBOARD



NO	DESCRIPTION	NO	DESCRIPTION
1C	CARGO TANK VALVE	12C	BURP VALVE RETURN TO CARGO TANK
2C	LOAD VALVE	13C	CARGO HEADER BLOCK VALVE
3C	MASTER SUCTION VALVE	15C	BYPASS VALVE (AROUND CHECK VALVE)
4C	DISCHARGE VALVE	19C	CARGO HEADER
5C	HEADER VALVE	30C	CARGO PIPELINE
8C	RELIEF VALVE	37C	CARGO DROP
9C	CHECK VALVE	56C	PRESSURE RELIEF VALVE
10C	BURP VALVE	—	— ABOVE DECK PIPING
11C	BLEED OFF VALVE	- - -	— BELOW DECK PIPING

NOTE 1: CONTAINMENT P/S

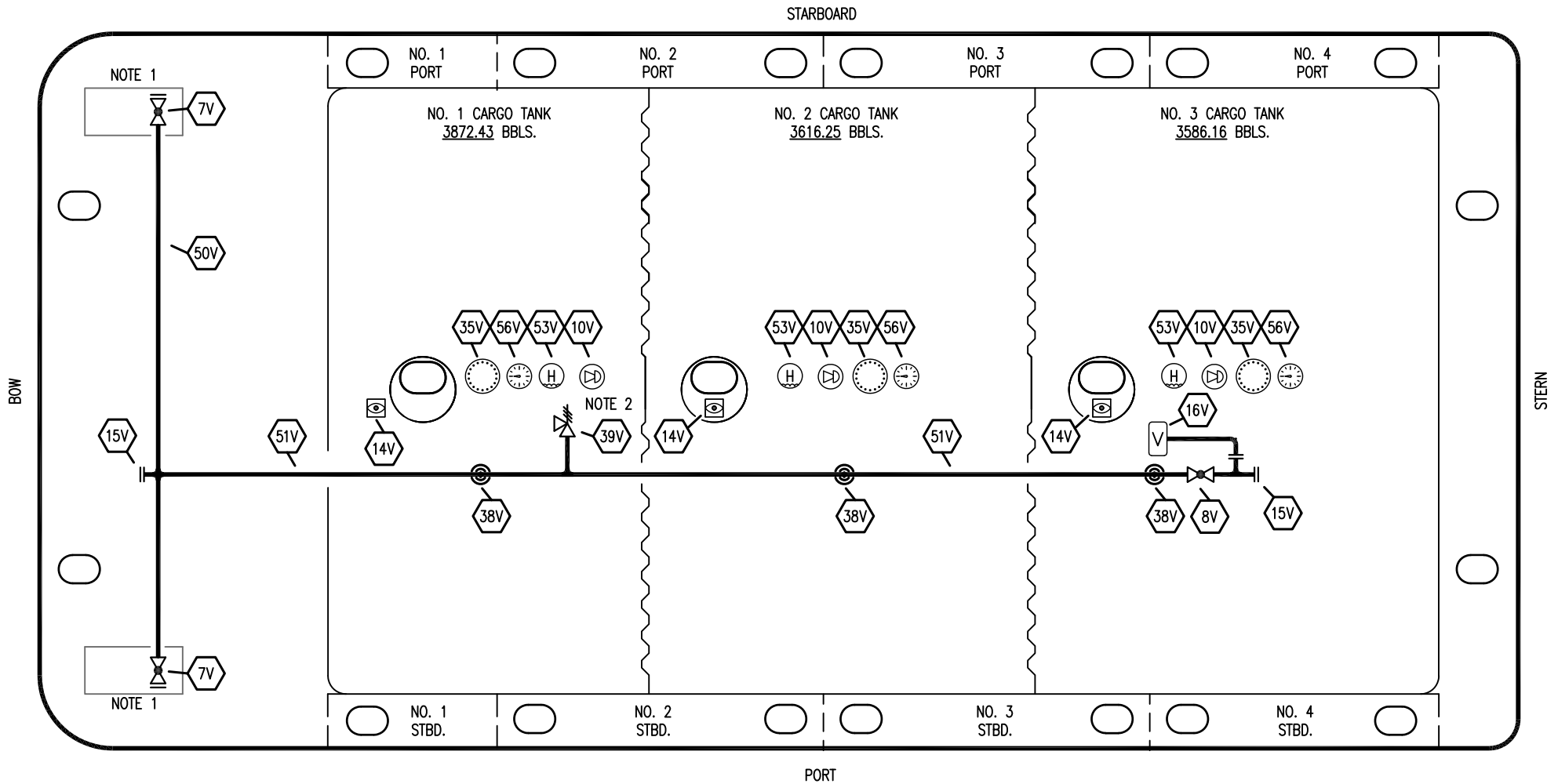
REV.	DATE	BY	CHK	APP	REVISION DESCRIPTION
1	05/01/24	AC	DDA	REM	REVISED PER CLIENT COMMENTS
0	01/09/24	MRV	DDA	WHI	ISSUED FOR APPROVAL

EX. FMT 1040

**KIRBY INLAND MARINE**

**CARGO  
PIPING FLOW DIAGRAM**

SCALE: NONE	<b>KIRBY 11366</b>	REV. 1
PAGE: 1 OF 4		



- |     |                           |     |                       |
|-----|---------------------------|-----|-----------------------|
| NO  | DESCRIPTION               | NO  | DESCRIPTION           |
| 7V  | HEADER VALVE              | 38V | VAPOR PENETRATION     |
| 8V  | VENT STACK VALVE          | 39V | PRESSURE/VACUUM VALVE |
| 10V | HIGH LEVEL/OVERFILL ALARM | 50V | VAPOR HEADER          |
| 14V | SIGHT GLASS W/ GAUGE TREE | 51V | VAPOR PIPELINE        |
| 15V | INSPECTION PORT           | 53V | ONE METER STICK GAUGE |
| 16V | VAPOR VENT STACK          | 56V | GAUGE POINT           |
| 35V | SPARE (NOZZLE)            | —   | ABOVE DECK PIPING     |

NOTE 2: P/V VALVE SETTINGS: 3-PSI PRESSURE; 1-PSI VACUUM  
 NOTE 1: CONTAINMENT P/S

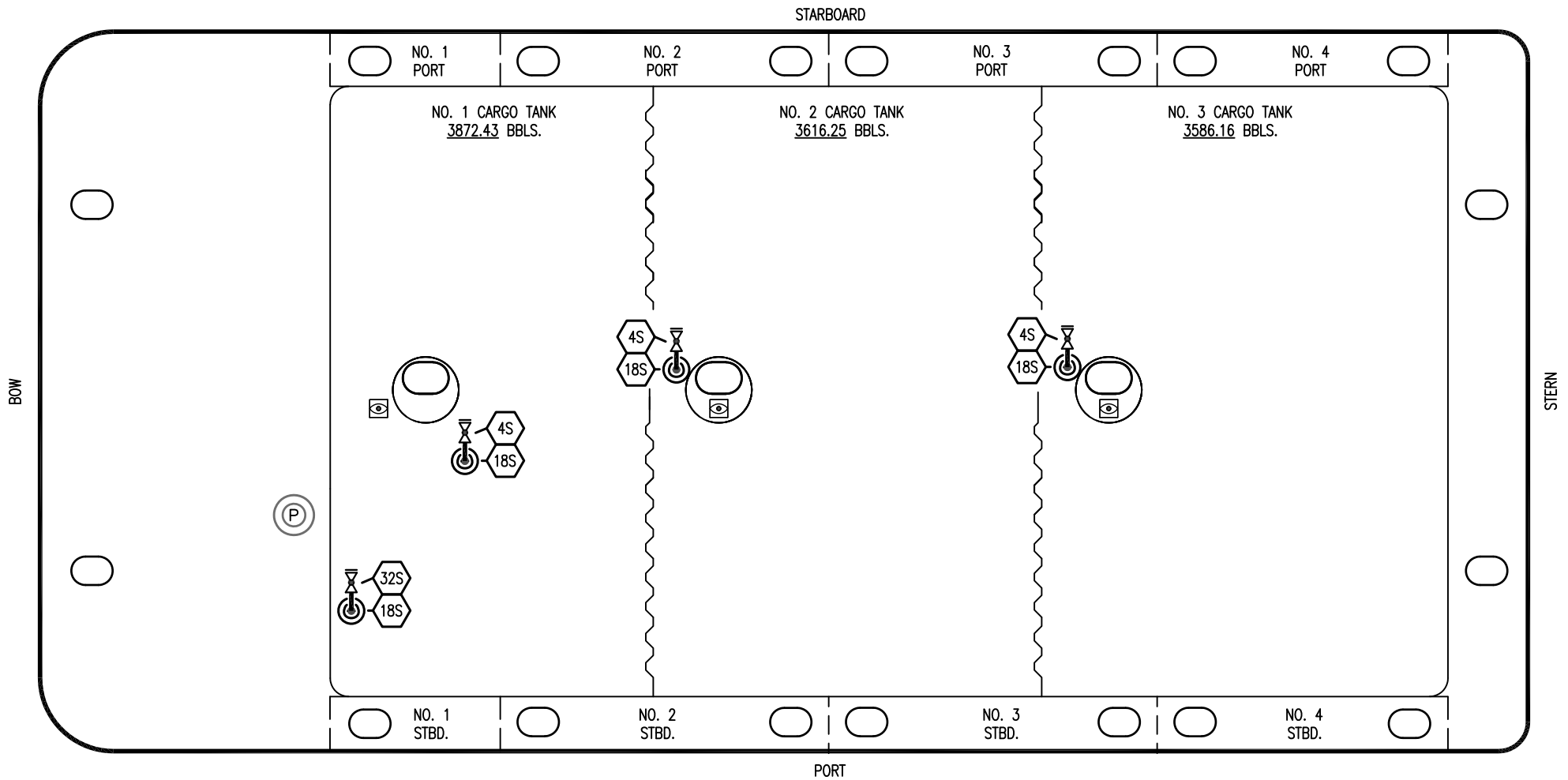
EX. FMT 1040

REV.	DATE	BY	CHK	APP	REVISION DESCRIPTION
1	05/01/24	AC	DDA	REM	REVISED PER CLIENT COMMENTS
0	01/06/24	MRV	DDA	WHI	ISSUED FOR APPROVAL

KIRBY INLAND MARINE

VAPOR  
PIPING FLOW DIAGRAM

SCALE: NONE	KIRBY 11366	REV. 1
PAGE: 2 OF 4		



- | NO | DESCRIPTION               |
|----|---------------------------|
|    | CARGO TANK SUCTION VALVE  |
|    | STRIPPING DROP            |
|    | PUMP WELL STRIPPING VALVE |
|    | ABOVE DECK PIPING         |

NOTE 1: CONTAINMENT P/S

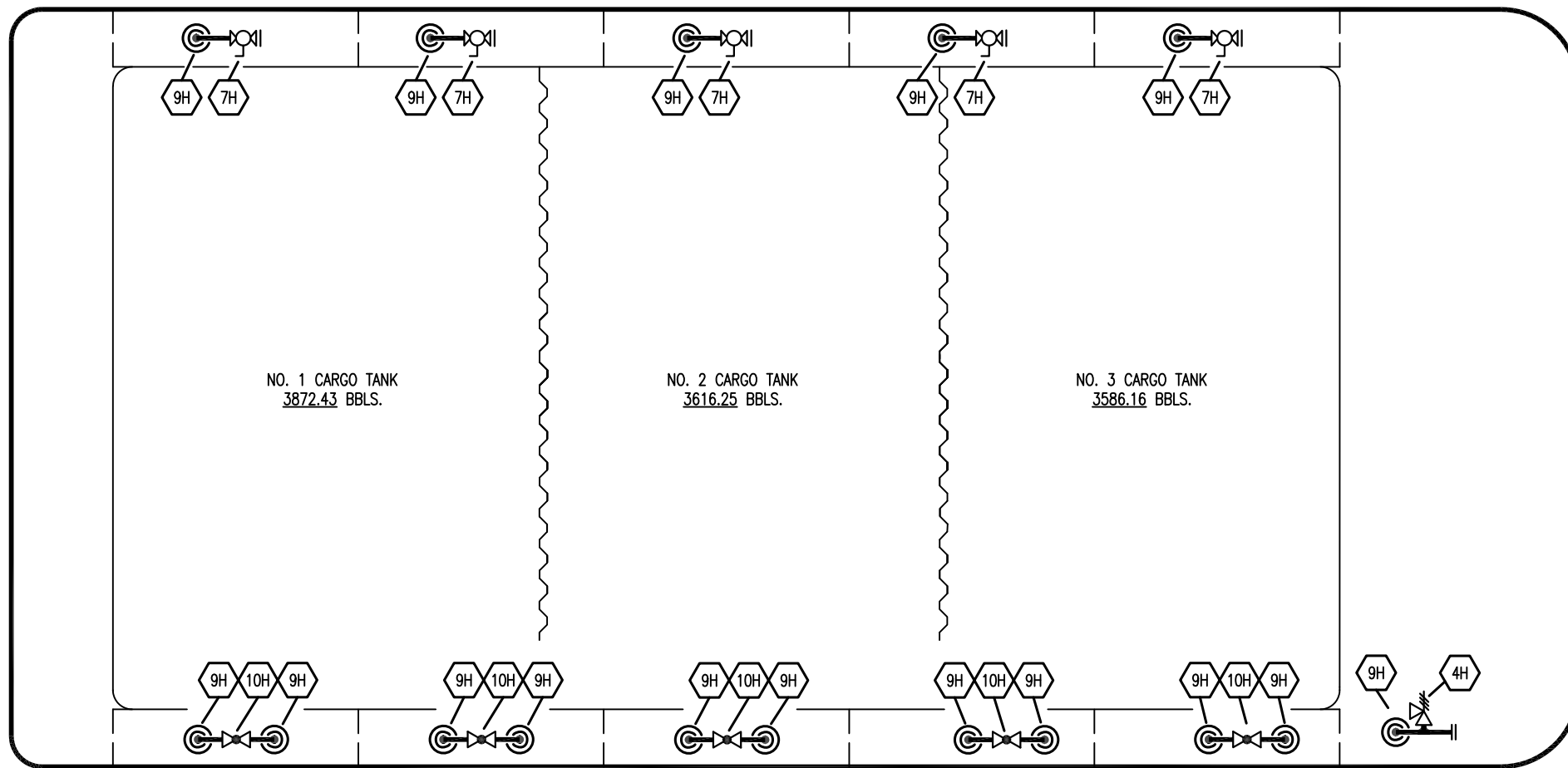
EX. FMT 1040

						<b>KIRBY INLAND MARINE</b>	
						<b>STRIPPING PIPING FLOW DIAGRAM</b>	
1	05/01/24	AC	DDA	REM	REVISED PER CLIENT COMMENTS		
0	01/09/24	MRV	DDA	WHI	ISSUED FOR APPROVAL		
REV.	DATE	BY	CHK	APP	REVISION DESCRIPTION	SCALE: NONE	<b>KIRBY 11366</b>
						PAGE: 3 OF 4	
						REV. <b>1</b>	

STARBOARD

BOW

STERN



PORT

- NO DESCRIPTION
- 4H RELIEF VALVE
- 7H CONDENSATE OUTLET
- 9H STEAM DROP
- 10H SUPPLY VALVE
- ABOVE DECK PIPING

EX: FMT 1040

0	05/01/24	AC	DDA	REM	ISSUED FOR APPROVAL	
REV.	DATE	BY	CHK	APP	REVISION DESCRIPTION	

**KIRBY INLAND MARINE**

**STEAM  
PIPING FLOW DIAGRAM**

SCALE: NONE  
PAGE: 4 OF 4  
**KIRBY 11366**  
REV. **0**